

**TYR**®

---

**ALWAYS IN FRONT**

**MEN'S TRAINING APPAREL SPRING/SUMMER 25**

4.10.24 V2 | ON-SHELF: 2.1.25





The TYR logo is positioned in the top left corner of the image. It consists of the letters 'TYR' in a bold, white, sans-serif font. The background of the entire image is a close-up of a dark grey, textured fabric, likely the Airtec™ fabric mentioned in the text. The texture is a fine, wavy pattern. On the right side, there is a white outline of the TYR logo on the fabric. The overall lighting is soft, highlighting the texture of the fabric.

## **AIRTEC™** FABRIC TECHNOLOGY

Ultra lightweight and cool, Airtec™ fabrication puts airflow at the forefront.

- 91% Polyester / 9% Spandex
- Ultra-lightweight cooling fabric
- Moisture-wicking
- Quick-drying

**WEIGHT:** 145 GSM



SIZE: S - XXL

FABRIC: 91% Polyester/ 9% Spandex

- **ULTRA SOFT COOLING FABRIC**
- **MOISTURE WICKING**
- **QUICK DRY**
- **ANTIMICROBIAL**

WEIGHT: 145 GSM

FEATURES:

- Designed for optimal range of motion
- Chafe-free construction - arms & neckline
- Athletic-fit - non-restrictive with movement





# TYR AIRTEC SHORT SLEEVE TEE

MSRP: \$59

SIZE: S - XXL

FABRIC: 91% Polyester/ 9% Spandex

- ULTRA SOFT COOLING FABRIC
- MOISTURE WICKING
- QUICK DRY
- ANTIMICROBIAL

WEIGHT: 145 GSM

FEATURES:

- Designed for optimal range of motion
- Chafe-free construction - arms & neckline
- Athletic-fit - non-restrictive with movement



MPTSO3A  
001 BLACK  
CARRYOVER

MPTSO3A  
252 HEATHER GREY  
CARRYOVER



# TYR AIRTEC SHORT SLEEVE TEE - LARGE LOGO

MSRP: \$59

SIZE: S - XXL

FABRIC: 91% Polyester/ 9% Spandex

- ULTRA SOFT COOLING FABRIC
- MOISTURE WICKING
- QUICK DRY
- ANTIMICROBIAL

WEIGHT: 145 GSM

FEATURES:

- Designed for optimal range of motion
- Chafe-free construction - arms & neckline
- Athletic-fit - non-restrictive with movement





# TYR AIRTEC LONG SLEEVE TEE

MSRP: \$69

SIZE: S - XXL

FABRIC: 91% Polyester/ 9% Spandex

- ULTRA SOFT COOLING FABRIC
- MOISTURE WICKING
- QUICK DRY
- ANTIMICROBIAL

WEIGHT: 145 GSM

FEATURES:

- Designed for optimal range of motion
- Chafe-free construction - arms & neckline
- Athletic-fit - non-restrictive with movement



MPTLSO3A  
001 BLACK  
CARRYOVER

MPTLSO3A  
252 HEATHER GREY  
CARRYOVER





**TYR**<sup>®</sup>

**CLIMADRY™**  
FABRIC TECHNOLOGY

- 88% Polyester / 12% Spandex
- Moisture-wicking
- Quick-drying
- Anti-microbial

**WEIGHT: 170 GSM**





SIZE: S - XXL

**CLIMADRY FABRIC TECHNOLOGY:**

88% POLYESTER / 12% SPANDEX

- **MOISTURE WICKING**
- **QUICK DRY**
- **ANTIMICROBIAL**
- **SOFT COMFORT PERFORMANCE**

**WEIGHT:** 170 GSM

**FEATURES:**

- Designed for optimal range of motion
- Chafe-free construction - arms & neckline
- Athletic-fit - non-restrictive with movement



**MMTKSO3A**  
001 BLACK  
CARRYOVER

**MMTKSO3A**  
966 MEDIUM GREY  
HEATHER  
CARRYOVER

**MMTKSO3A**  
206 WALNUT



# TYR CLIMADRY RAGLAN SHORT SLEEVE TECH TEE

MSRP: \$59

SIZE: S - XXL

## CLIMADRY FABRIC TECHNOLOGY:

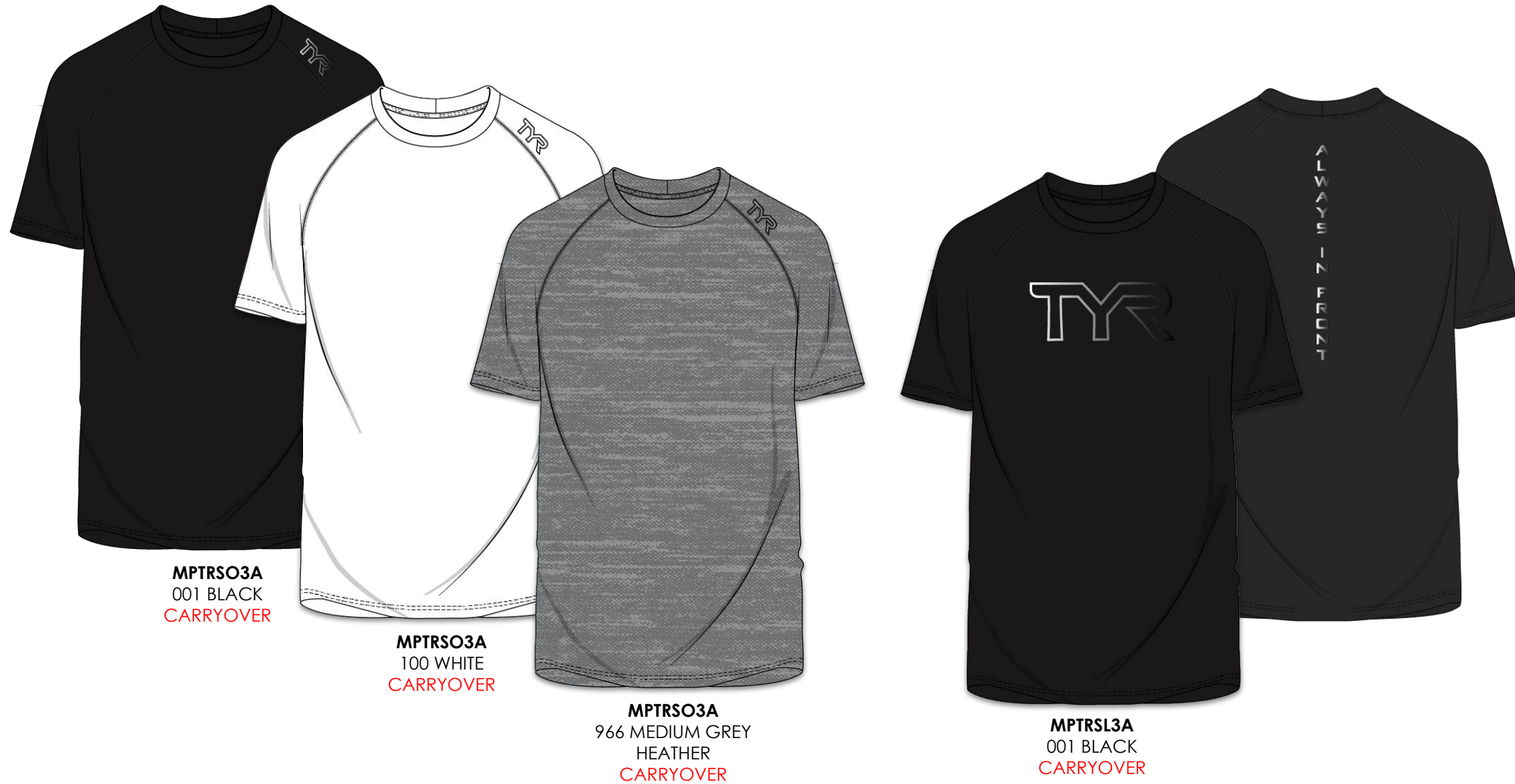
FABRIC: 88% Polyester/ 12% Spandex

- ULTRA SOFT JERSEY CONSTRUCTION
- MOISTURE WICKING
- QUICK DRY
- ANTIMICROBIAL

WEIGHT: 170 GSM

## FEATURES:

- Designed for optimal range of motion
- Chafe-free construction - arms & neckline
- Athletic-fit - non-restrictive with movement



Bumper slide placeholder



SIZE: S - XXL

**FABRIC TECHNOLOGY:**

- MOISTURE WICKING
- QUICK DRY
- ANTIMICROBIAL PROTECT
- SOFT COMFORT PERFORMANCE

**WEIGHT:**

**FEATURES:**

-

**T44018**  
001 BLACK

The TYR logo is displayed in a bold, white, sans-serif font in the upper left corner of the image. The background of the entire image is a close-up of a dark-colored fabric, likely a swim cap or athletic wear, showing a fine, ribbed texture. On the right side, a portion of a person's neck and shoulder is visible, wearing a dark garment with a white TYR logo on the shoulder.

**TYR**

**SLS™**  
FABRIC TECHNOLOGY

Our softest fabric yet, SLS™ fabric is designed for comfortable breathability.

- 92% Polyester / 8% Spandex
- Breathable performance
- Second layer softness
- Moisture-wicking
- Quick-drying

**WEIGHT:** 220 GSM



# TYR SLS TECH PERFORMANCE HOODIE

MSRP: \$79

SIZE: S - XXL

FABRIC: 92% POLYESTER / 8% SPANDEX

- ULTRA SOFT BREATHABLE PERFORMANCE
- MOISTURE WICKING
- QUICK DRY

WEIGHT: 220 GSM

## FEATURES:

- Stay-in-place overlapping hood
- Designed for optimal range of motion
- Chafe-free construction - neckline
- Athletic-fit - non-restrictive with movement



**MPTHSO3A**  
001 BLACK  
CARRYOVER

**MPTHSO3A**  
255 CHARCOAL HEATHER  
CARRYOVER





**TYR**

## **HYDROSPHERE™** FABRIC TECHNOLOGY

Made with sustainable, 4-way stretch materials, this fabric is highly water repellent while remaining durable and soft.

- 54% Recycled Polyester/  
32% Polyester/14% Spandex
- Highly water repellent
- Speed dry technology
- Interlocking 4-way stretch
- Sustainable footprint

**WEIGHT:** 120 GSM





# TYR UNBROKEN SHORT UNLINED 5"

MSRP: \$69. Large Logo \$75

SIZE: S - XXL

**HYDROSPHERE FABRICATION:** 54% RECYCLED

POLYESTER / 32% POLYESTER / 14% SPANDEX

- **HIGHLY WATER REPELLENT**
- **SPEED DRY TECHNOLOGY**
- **INTERLOCKING 4-WAY STRETCH**
- **SUSTAINABLE FOOTPRINT**

**WEIGHT:** 120 GSM

**FEATURES:**

- Sweat-wicking comfort waistband
- Athletic-fit - non-restrictive with movement
- Interior Waistband Drawcord for the perfect fit
- Vented side hem for breathability
- Deep side pockets for maximum utility
- Large secure zipper cell-phone pocket



**B44065**  
102 STONE



**B44066**  
085 SMK/FL GRN  
CITRON



**B44023**  
001 BLACK  
CARRYOVER



**B44065**  
001 BLACK

# TYR UNBROKEN SHORT UNLINED 7"

MSRP: \$69. Large Logo \$75

SIZE: S - XXL

**HYDROSPHERE FABRICATION:** 54% RECYCLED

POLYESTER / 32% POLYESTER / 14% SPANDEX

- HIGHLY WATER REPELLENT
- SPEED DRY TECHNOLOGY
- INTERLOCKING 4-WAY STRETCH
- SUSTAINABLE FOOTPRINT

**WEIGHT:** 120 GSM

**FEATURES:**

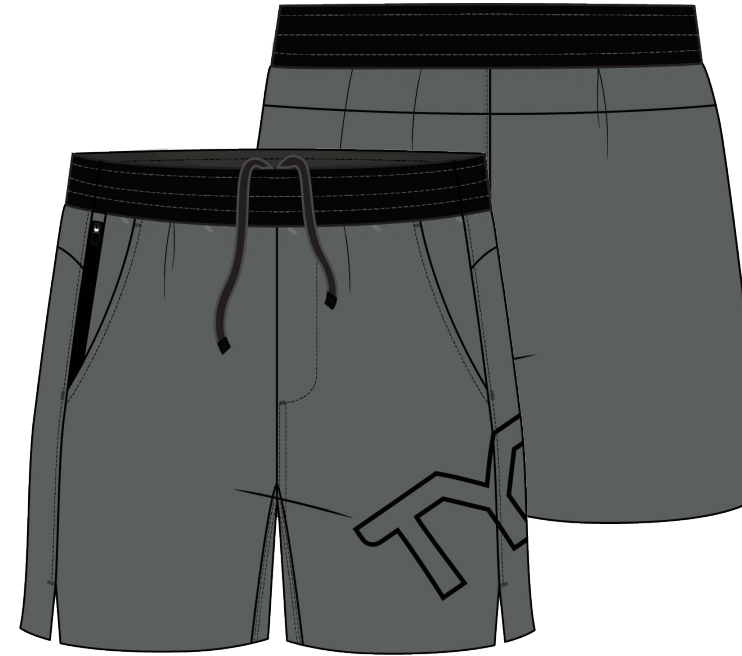
- Sweat-wicking comfort waistband
- Athletic-fit - non-restrictive with movement
- Interior Waistband Drawcord for the perfect fit
- Vented side hem for breathability
- Deep side pockets for maximum utility
- Large secure zipper cell-phone pocket



**MUSUSL3A**  
102 STONE



**B44067**  
085 SMK/FL GRN  
CITRON



**MUSUSL3A**  
020 GUNMETAL



**MUSUSO3A**  
020 GUNMETAL



**MUSUSO3A**  
001 BLACK  
CARRYOVER



**MUSUSL3A**  
001 BLACK  
CARRYOVER



# TYR UNBROKEN SHORT LINED 7"

MSRP: \$75, Large Logo \$79

SIZE: S - XXL

**HYDROSPHERE FABRICATION:** 54% RECYCLED

POLYESTER / 32% POLYESTER / 14% SPANDEX

- HIGHLY WATER REPELLENT
- SPEED DRY TECHNOLOGY
- INTERLOCKING 4-WAY STRETCH
- SUSTAINABLE FOOTPRINT

**WEIGHT:** 120 GSM

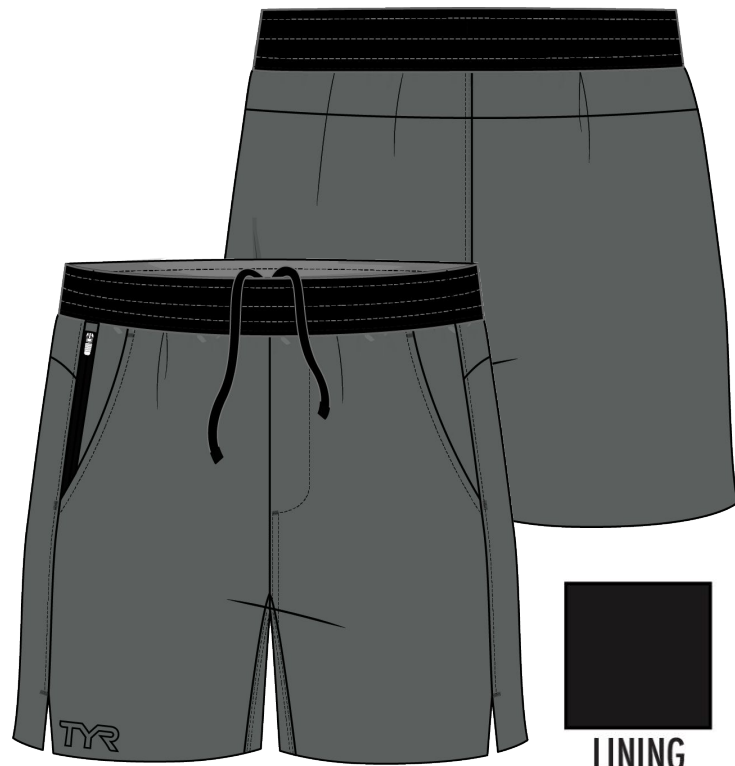
**FEATURES:**

- Compression Short Lined
- Sweat-wicking comfort waistband
- Interior Waistband Drawcord for the perfect fit
- Athletic-fit - non-restrictive with movement
- Vented side hem for breathability
- Deep side pockets for maximum utility
- Large secure zipper cell-phone pocket



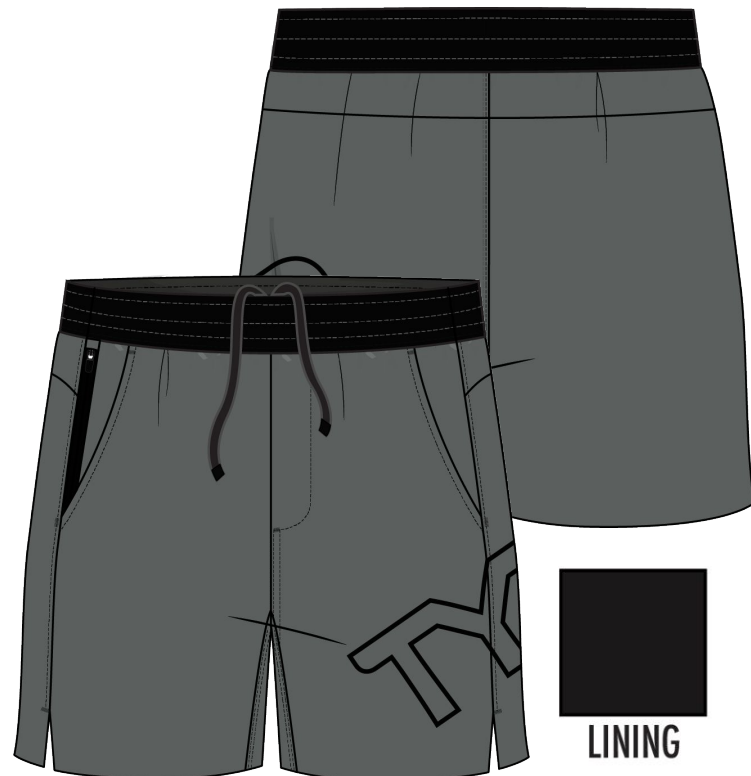
**MUSLSL3A**  
102 STONE

LINING



**MUSLSO3A**  
020 GUNMETAL

LINING



**MUSLSL3A**  
020 GUNMETAL

LINING



**MUSLSO3A**  
001 BLACK  
CARRYOVER

LINING



**MUSLSL3A**  
001 BLACK  
CARRYOVER

LINING



# TYR UNBROKEN SHORT UNLINED 9"

MSRP: \$69

SIZE: S - XXL

**HYDROSPHERE FABRICATION:** 54% RECYCLED  
POLYESTER / 32% POLYESTER / 14% SPANDEX

- **HIGHLY WATER REPELLENT**
- **SPEED DRY TECHNOLOGY**
- **INTERLOCKING 4-WAY STRETCH**
- **SUSTAINABLE FOOTPRINT**

**WEIGHT:** 120 GSM

**FEATURES:**

- Sweat-wicking comfort waistband
- Athletic-fit - non-restrictive with movement
- Interior Waistband Drawcord for the perfect fit
- Vented side hem for breathability
- Deep side pockets for maximum utility
- Large secure zipper cell-phone pocket



**MUSNUS3A**  
001 BLACK  
CARRYOVER



# TYR UNBROKEN SHORT LINED 9"

MSRP: \$75

SIZE: S - XXL

**HYDROSPHERE FABRICATION:** 54% RECYCLED  
POLYESTER / 32% POLYESTER / 14% SPANDEX

- **HIGHLY WATER REPELLENT**
- **SPEED DRY TECHNOLOGY**
- **INTERLOCKING 4-WAY STRETCH**
- **SUSTAINABLE FOOTPRINT**

**WEIGHT:** 120 GSM

**FEATURES:**

- Sweat-wicking comfort waistband
- Athletic-fit - non-restrictive with movement
- Interior Waistband Drawcord for the perfect fit
- Vented side hem for breathability
- Deep side pockets for maximum utility
- Large secure zipper cell-phone pocket



**MUSNLS3A**  
001 BLACK  
CARRYOVER

# TYR MOMENTUM SHORT UNLINED 6"

MSRP: \$69, Large Logo \$75

SIZE: S - XXL

**HYDROSPHERE FABRICATION:** 54% RECYCLED  
POLYESTER / 32% POLYESTER / 14% SPANDEX

- **HIGHLY WATER REPELLENT**
- **SPEED DRY TECHNOLOGY**
- **INTERLOCKING 4-WAY STRETCH**
- **SUSTAINABLE FOOTPRINT**

**WEIGHT:** 120 GSM

**FEATURES:**

- Maximum Stretch & Flexible waistband
- Athletic-fit - non-restrictive with movement
- Interior Waistband Drawcord for the perfect fit
- Vented side hem for breathability
- Large secure zipper cell-phone pocket
- Wide leg design



**MMSUSL3A**  
001 BLACK  
CARRYOVER



**MASUSO3A**  
001 BLACK  
CARRYOVER



# TYR MOMENTUM SHORT LINED 6"

MSRP: \$75. Large Logo \$79

SIZE: S - XXL

**HYDROSPHERE FABRICATION:** 54% RECYCLED

POLYESTER / 32% POLYESTER / 14% SPANDEX

- **HIGHLY WATER REPELLENT**
- **SPEED DRY TECHNOLOGY**
- **INTERLOCKING 4-WAY STRETCH**
- **SUSTAINABLE FOOTPRINT**

**WEIGHT:** 120 GSM

**FEATURES:**

- Compression Short Lined
- Maximum Stretch & Flexible waistband
- Athletic-fit - non-restrictive with movement
- Interior Waistband Drawcord for the perfect fit
- Vented side hem for breathability
- Large secure zipper cell-phone pocket
- Wide leg design



**MMSLSL3A**  
001 BLACK  
CARRYOVER



**MASLSO3A**  
001 BLACK  
CARRYOVER

Bumper slide placeholder



**TYR** **NEW** LIGHTWEIGHT KNIT SHORT - 7"  
MSRP: \$69

SIZE: S - XXL

FABRIC: 92% NYLON / 8% SPANDEX

WEIGHT: 242G

**FEATURES:**

- Slim Fit
- Interior Drawcord
- Zipper Pockets



**B44068**  
001 BLACK

**B44068**  
255 CHARCOAL  
HEATHER

# TYR<sup>®</sup> COMPRESSION SHORT

MSRP: \$49

SIZE: S - XXL

**COMPRESSION FABRIC TECHNOLOGY:** 78% RECYCLED

NYLON / 22% XTRA LIFE LYCRA

- REDUCES LACTIC ACID BUILD
- SLEEK PERFORMANCE
- QUICK DRY
- SUSTAINABLE FOOTPRINT

**WEIGHT:** 190 GSM

#### FEATURES:

- Mid Rise
- 8.5" inseam length
- Comfort logo waistband for unrestricted movement
- Stay-In-Place Leg Band
- Side Phone Pocket
- Front Key Pocket



MCSLSO3A  
001 BLACK  
CARRYOVER



SIZE: S - XXL

**COMPRESSION FABRIC TECHNOLOGY:** 78% RECYCLED

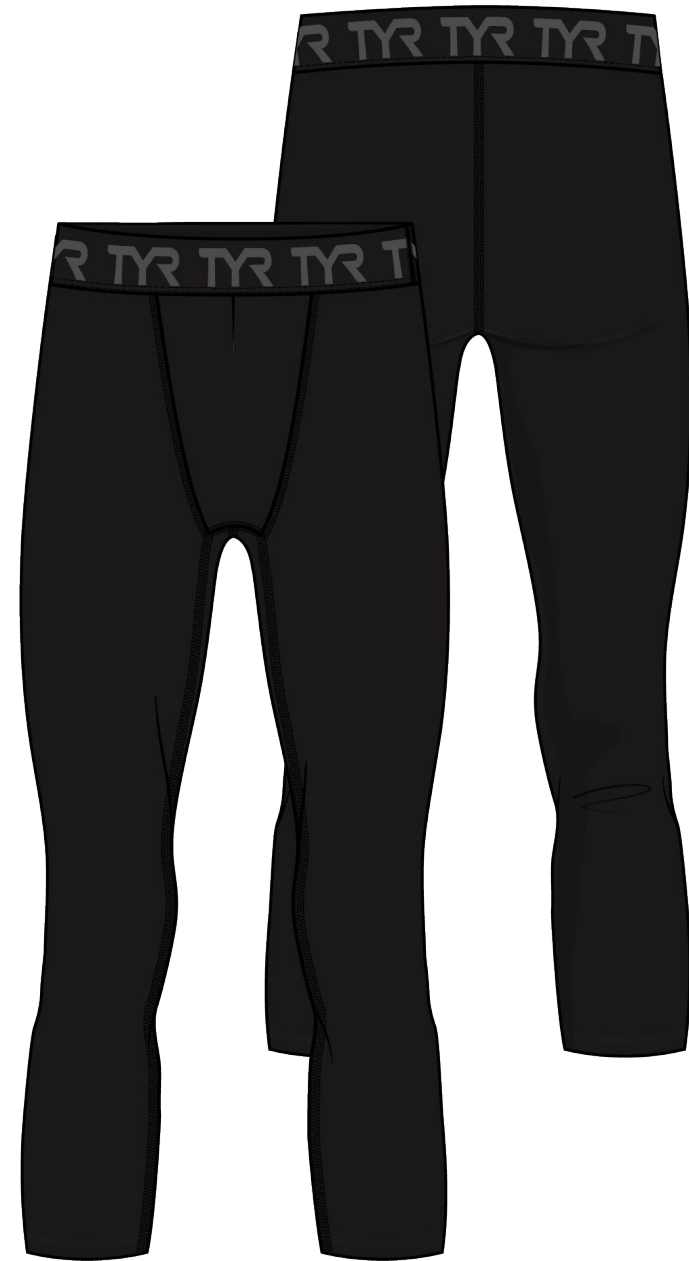
NYLON / 22% XTRA LIFE LYCRA

- REDUCES LACTIC ACID BUILD
- SLEEK PERFORMANCE
- QUICK DRY
- SUSTAINABLE FOOTPRINT

**WEIGHT:** 190 GSM

**FEATURES:**

- Mid Rise
- Comfort logo waistband for unrestricted movement
- Minimal seams for maximum flexibility
- Below the knee length



MCCSO3A  
001 BLACK  
CARRYOVER

SIZE: S - XXL

**COMPRESSION FABRIC TECHNOLOGY:** 78% RECYCLED

NYLON / 22% XTRA LIFE LYCRA

- REDUCES LACTIC ACID BUILD
- SLEEK PERFORMANCE
- QUICK DRY
- SUSTAINABLE FOOTPRINT

**WEIGHT:** 190 GSM

**FEATURES:**

- Mid Rise
- Comfort logo waistband for unrestricted movement
- Minimal seams for maximum flexibility
- Full length



**MCTFSO3A**  
001 BLACK  
CARRYOVER





**AIRTEC TANK**



**AIRTEC SS TEE**



**AIRTEC SS TEE - LARGE LOGO**



**AIRTEC LS TEE**



**SLS TECH PERFORMANCE HOODIE**



**CLIMADRY TECH TANK**



**CLIMADRY RAGLAN SS TECH TEE**



**CLIMADRY RAGLAN LS TECH TEE**

**5"**



**5" UNBRKN - UNLINED**



**5" UNBRKN - UNLINED- LG LOGO**

**6"**



**6" MOMENTUM - UNLINED**



**6" MOMENTUM - LG LOGO**



**6" MOMENTUM - LINED**

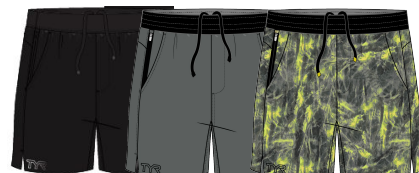


**6" MOMENTUM - LINED - LG LOGO**



**COMPRESSION LINER**

**7"**



**7" UNBRKN - UNLINED**



**7" UNBRKN - UNLINED - LG LOGO**



**7" UNBRKN - LINED**



**7" UNBRKN - LINED - LG LOGO**



**COMPRESSION CROP**



**COMPRESSION FULL LENGTH**



**7" KNIT SHORT**



AIRTEC TANK



CLIMADRY TANK



AIRTEC SS TEE - LARGE LOGO



5" UNBRKN - UNLINED



5" UNBRKN - UNLINED- LG LOGO



7" UNBRKN - UNLINED - LG LOGO



7" UNBRKN - UNLINED - LG LOGO



7" UNBRKN - LINED - LG LOGO



7" KNIT SHORT