

**TYR®**

---

**ALWAYS IN FRONT**

**TRAINING APPAREL SPRING / SUMMER 25**

4.5.24 V1 | ON-SHELF: 6.1.25





The TYR logo is positioned in the top left corner of the image. It consists of the letters 'TYR' in a bold, white, sans-serif font. The background of the entire image is a close-up of a dark grey, textured fabric, likely a swimsuit, with a visible ribbed pattern. A white TYR logo is also printed on the fabric in the upper right quadrant.

**AIRTEC™**  
FABRIC TECHNOLOGY

Ultra lightweight and cool, Airtec™ fabrication puts airflow at the forefront.

- 91% Polyester / 9% Spandex
- Ultra-lightweight cooling fabric
- Moisture-wicking
- Quick-drying

**WEIGHT:** 145 GSM



SIZE: S - XXL

FABRIC: 91% Polyester/ 9% Spandex

- **ULTRA SOFT COOLING FABRIC**
- **MOISTURE WICKING**
- **QUICK DRY**

WEIGHT: 145 GSM

**FEATURES:**

- Designed for optimal range of motion
- Chafe-free construction - arms & neckline
- Athletic-fit - non-restrictive with movement





SIZE: S - XXL

FABRIC: 91% Polyester/ 9% Spandex

- **ULTRA SOFT COOLING FABRIC**
- **MOISTURE WICKING**
- **QUICK DRY**

WEIGHT: 145 GSM

**FEATURES:**

- Designed for optimal range of motion
- Chafe-free construction - arms & neckline
- Athletic-fit - non-restrictive with movement



**MPTS03A**  
001 BLACK  
CARRYOVER

**MPTS03A**  
252 HEATHER GREY  
CARRYOVER



# TYR AIRTEC TEE - LARGE LOGO

MSRP: \$69

SIZE: S - XXL

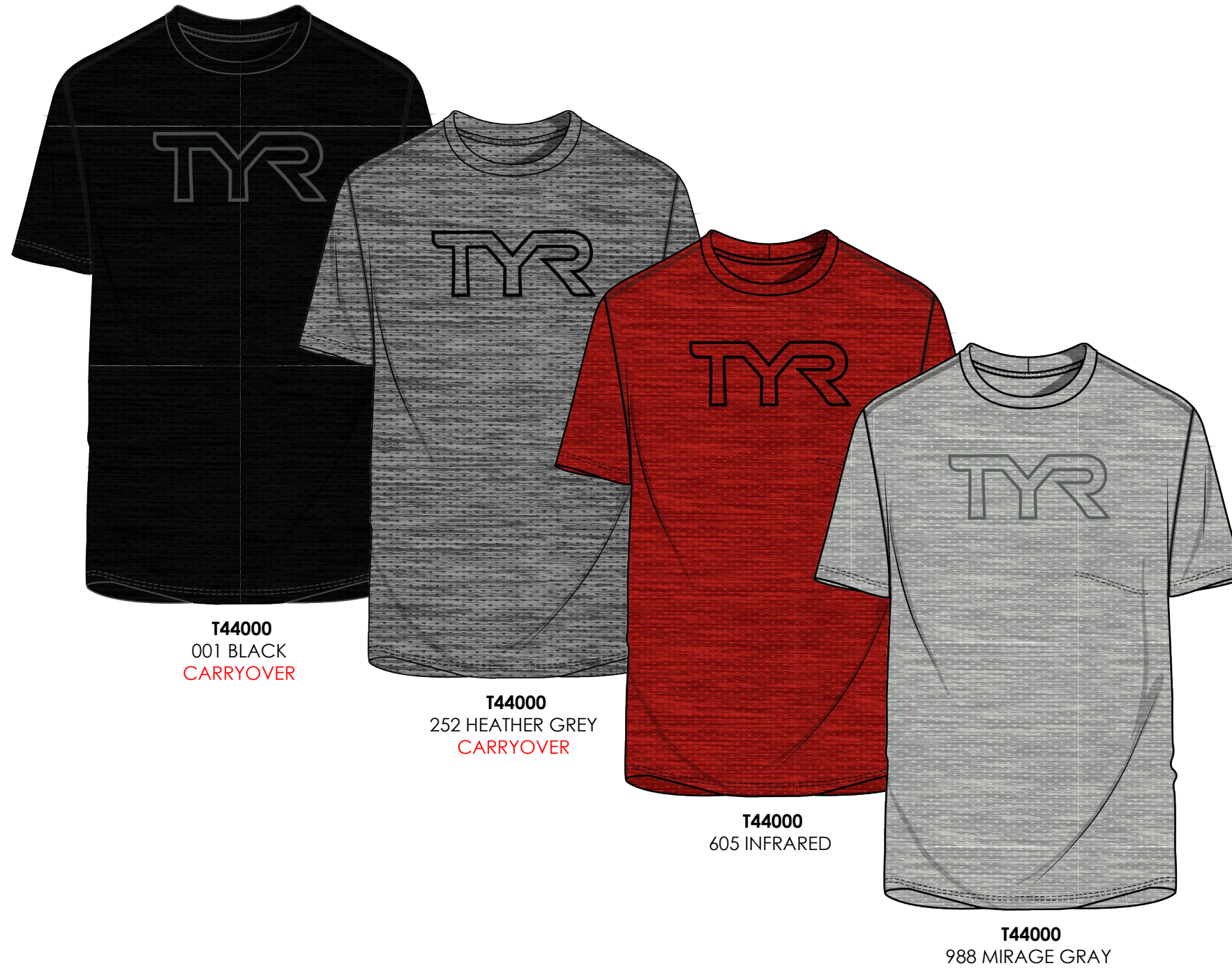
FABRIC: 91% Polyester/ 9% Spandex

- ULTRA SOFT COOLING FABRIC
- MOISTURE WICKING
- QUICK DRY

WEIGHT: 145 GSM

## FEATURES:

- Designed for optimal range of motion
- Chafe-free construction - arms & neckline
- Athletic-fit - non-restrictive with movement





The TYR logo is displayed in a bold, white, sans-serif font in the top left corner of the image. The background of the entire image is a close-up of a grey fabric with a ribbed texture, showing the intricate details of the knit pattern.

**CLIMADRY™**  
FABRIC TECHNOLOGY

- 88% Polyester / 12% Spandex
- Moisture-wicking
- Quick-drying
- Anti-microbial

**WEIGHT: 170 GSM**

A large, stylized TYR logo is printed on the chest of a grey t-shirt. The logo is rendered in a dark grey or black color with a thick, double-line outline, giving it a three-dimensional appearance. The t-shirt is shown from the chest up, with the neckline visible at the top. The background of the image is a close-up of the same grey fabric texture.



SIZE: S - XXL

**CLIMADRY FABRIC TECHNOLOGY:**

88% POLYESTER / 12% SPANDEX

- **MOISTURE WICKING**
- **QUICK DRY**
- **ANTI-MICROBIAL PROTECT**
- **SOFT COMFORT PERFORMANCE**

**WEIGHT:** 170 GSM

**FEATURES:**

- Designed for optimal range of motion
- Chafe-free construction - arms & neckline
- Athletic-fit - non-restrictive with movement



**MMTKSO3A**  
001 BLACK  
CARRYOVER

**MMTKSO3A**  
966 MEDIUM GREY  
HEATHER  
CARRYOVER

**MMTKSO3A**  
260 BEIGE



# TYR CLIMADRY RAGLAN SHORT SLEEVE TEE

MSRP: \$59

SIZE: S - XXL

## CLIMADRY FABRIC TECHNOLOGY:

88% POLYESTER / 12% SPANDEX

- MOISTURE WICKING
- QUICK DRY
- ANTI-MICROBIAL PROTECT
- SOFT COMFORT PERFORMANCE

LIGHTWEIGHT: 170 GSM

## FEATURES:

- Designed for optimal range of motion
- Chafe-free construction - arms & neckline
- Athletic-fit - non-restrictive with movement



**MPRSO3A**  
001 BLACK  
CARRYOVER

**MPRSO3A**  
100 WHITE  
CARRYOVER

**MPRSO3A**  
966 MEDIUM GREY  
HEATHER  
CARRYOVER



**MPTRSL3A**  
001 BLACK  
CARRYOVER



# TYR CLIMADRY LONG SLEEVE TEE

MSRP: \$69

SIZE: S - XXL

FABRIC: 88% Polyester/ 12% Spandex

- **ULTRA SOFT JERSEY CONSTRUCTION**
- **MOISTURE WICKING**
- **QUICK DRY**
- **ANTIMICROBIAL**

WEIGHT: 170 GSM

## FEATURES:

- Designed for optimal range of motion
- Chafe-free construction - arms & neckline
- Athletic-fit - non-restrictive with movement





Bumper slide placeholder



SIZE: S - XXL

**FABRIC TECHNOLOGY:**

- MOISTURE WICKING
- QUICK DRY
- ANTI-MICROBIAL PROTECT
- SOFT COMFORT PERFORMANCE

**WEIGHT:**

**FEATURES:**

-

**T44018**  
001 BLACK  
CARRYOVER



The TYR logo is displayed in a bold, white, sans-serif font in the upper left corner of the image. The background of the entire image is a close-up of a dark-colored fabric, likely a swimsuit, with a visible ribbed texture. On the right side, a portion of a person's neck and shoulder is visible, wearing a dark garment with a white TYR logo on the shoulder.

**TYR**

**SLS™**  
FABRIC TECHNOLOGY

Our softest fabric yet, SLS™ fabric is designed for comfortable breathability.

- 92% Polyester / 8% Spandex
- Breathable performance
- Second layer softness
- Moisture-wicking
- Quick-drying

**WEIGHT:** 220 GSM



# TYR SLS TECH PERFORMANCE HOODIE

MSRP: \$79

SIZE: S - XXL

FABRIC: 92% POLYESTER / 8% SPANDEX

- ULTRA SOFT BREATHABLE PERFORMANCE
- MOISTURE WICKING
- QUICK DRY

WEIGHT: 220 GSM

## FEATURES:

- Stay-in-place overlapping hood
- Designed for optimal range of motion
- Chafe-free construction - neckline
- Athletic-fit - non-restrictive with movement



MPTHSO3A  
001 BLACK  
CARRYOVER

MPTHSO3A  
255 CHARCOAL HEATHER  
CARRYOVER





**TYR**

## **HYDROSPHERE™** FABRIC TECHNOLOGY

Made with sustainable, 4-way stretch materials, this fabric is highly water repellent while remaining durable and soft.

- 54% Recycled Polyester/  
32% Polyester/14% Spandex
- Highly water repellent
- Speed dry technology
- Interlocking 4-way stretch
- Sustainable footprint

**WEIGHT:** 120 GSM





# TYR UNBROKEN SHORT UNLINED 5"

MSRP: \$69. Large Logo \$75

SIZE: S - XXL

**HYDROSPHERE FABRICATION:** 54% RECYCLED

POLYESTER / 32% POLYESTER / 14% SPANDEX

- **HIGHLY WATER REPELLENT**
- **SPEED DRY TECHNOLOGY**
- **INTERLOCKING 4-WAY STRETCH**
- **SUSTAINABLE FOOTPRINT**

**WEIGHT:** 120 GSM

**FEATURES:**

- Sweat-wicking comfort waistband
- Athletic-fit - non-restrictive with movement
- Interior Waistband Drawcord for the perfect fit
- Vented side hem for breathability
- Deep side pockets for maximum utility
- Large secure zipper cell-phone pocket



**B44069**  
640 RED/BLACK  
REDROCK



**B44023**  
050 LIGHT GREY



**B44023**  
001 BLACK  
CARRYOVER



**B44065**  
001 BLACK  
CARRYOVER

# TYR UNBROKEN SHORT UNLINED 7"

MSRP: \$69, Large Logo \$75

SIZE: S - XXL

**HYDROSPHERE FABRICATION:** 54% RECYCLED

POLYESTER / 32% POLYESTER / 14% SPANDEX

- HIGHLY WATER REPELLENT
- SPEED DRY TECHNOLOGY
- INTERLOCKING 4-WAY STRETCH
- SUSTAINABLE FOOTPRINT

**WEIGHT:** 120 GSM

### FEATURES:

- Sweat-wicking comfort waistband
- Athletic-fit - non-restrictive with movement
- Interior Waistband Drawcord for the perfect fit
- Vented side hem for breathability
- Deep side pockets for maximum utility
- Large secure zipper cell-phone pocket



**B44070**  
640 RED/BLACK  
REDROCK



**MUSUSL3A**  
050 LIGHT GREY



**MUSUSO3A**  
020 GUNMETAL  
CARRYOVER



**MUSUSL3A**  
020 GUNMETAL  
CARRYOVER



**MUSUSO3A**  
001 BLACK  
CARRYOVER



**MUSUSL3A**  
001 BLACK  
CARRYOVER



# TYR UNBROKEN SHORT LINED 7"

MSRP: \$75, Large Logo \$79

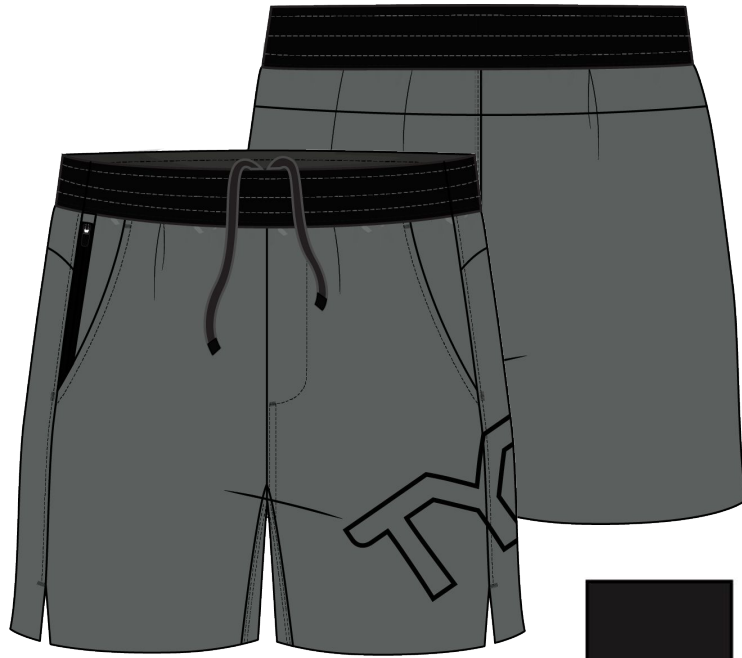
SIZE: S - XXL



**MUSLSO3A**  
020 GUNMETAL  
CARRYOVER



LINING



**MUSUSL3A**  
020 GUNMETAL  
CARRYOVER



LINING



**MUSLSO3A**  
001 BLACK  
CARRYOVER



LINING



**MUSUSL3A**  
001 BLACK  
CARRYOVER



LINING

**HYDROSPHERE FABRICATION:** 54% RECYCLED

POLYESTER / 32% POLYESTER / 14% SPANDEX

- **HIGHLY WATER REPELLENT**
- **SPEED DRY TECHNOLOGY**
- **INTERLOCKING 4-WAY STRETCH**
- **SUSTAINABLE FOOTPRINT**

**WEIGHT:** 120 GSM

**FEATURES:**

- Compression Short Lined
- Sweat-wicking comfort waistband
- Interior Waistband Drawcord for the perfect fit
- Athletic-fit - non-restrictive with movement
- Vented side hem for breathability
- Deep side pockets for maximum utility
- Large secure zipper cell-phone pocket

# TYR UNBROKEN SHORT UNLINED 9"

MSRP: \$69

SIZE: S - XXL

**HYDROSPHERE FABRICATION:** 54% RECYCLED

POLYESTER / 32% POLYESTER / 14% SPANDEX

- **HIGHLY WATER REPELLENT**
- **SPEED DRY TECHNOLOGY**
- **INTERLOCKING 4-WAY STRETCH**
- **SUSTAINABLE FOOTPRINT**

**WEIGHT:** 120 GSM

#### FEATURES:

- Sweat-wicking comfort waistband
- Athletic-fit - non-restrictive with movement
- Interior Waistband Drawcord for the perfect fit
- Vented side hem for breathability
- Deep side pockets for maximum utility
- Large secure zipper cell-phone pocket



**MUSNUS3A**  
001 BLACK  
CARRYOVER



# TYR UNBROKEN SHORT LINED 9"

MSRP: \$75

SIZE: S - XXL

**HYDROSPHERE FABRICATION:** 54% RECYCLED

POLYESTER / 32% POLYESTER / 14% SPANDEX

- **HIGHLY WATER REPELLENT**
- **SPEED DRY TECHNOLOGY**
- **INTERLOCKING 4-WAY STRETCH**
- **SUSTAINABLE FOOTPRINT**

**WEIGHT:** 120 GSM

**FEATURES:**

- Sweat-wicking comfort waistband
- Athletic-fit - non-restrictive with movement
- Interior Waistband Drawcord for the perfect fit
- Vented side hem for breathability
- Deep side pockets for maximum utility
- Large secure zipper cell-phone pocket



**MUSNLS3A**  
001 BLACK  
CARRYOVER

# TYR MOMENTUM SHORT UNLINED 6"

MSRP: \$69, Large Logo \$75

SIZE: S - XXL

**HYDROSPHERE FABRICATION:** 54% RECYCLED

POLYESTER / 32% POLYESTER / 14% SPANDEX

- **HIGHLY WATER REPELLENT**
- **SPEED DRY TECHNOLOGY**
- **INTERLOCKING 4-WAY STRETCH**
- **SUSTAINABLE FOOTPRINT**

**WEIGHT:** 120 GSM

**FEATURES:**

- Maximum Stretch & Flexible waistband
- Athletic-fit - non-restrictive with movement
- Interior Waistband Drawcord for the perfect fit
- Vented side hem for breathability
- Large secure zipper cell-phone pocket
- Wide leg design



**MMSUSL3A**  
001 BLACK  
CARRYOVER



**MASUSO3A**  
001 BLACK  
CARRYOVER



# TYR MOMENTUM SHORT LINED 6"

MSRP: \$75, Large Logo \$79

SIZE: S - XXL

**HYDROSPHERE FABRICATION:** 54% RECYCLED

POLYESTER / 32% POLYESTER / 14% SPANDEX

- **HIGHLY WATER REPELLENT**
- **SPEED DRY TECHNOLOGY**
- **INTERLOCKING 4-WAY STRETCH**
- **SUSTAINABLE FOOTPRINT**

**WEIGHT:** 120 GSM

**FEATURES:**

- Compression Short Lined
- Maximum Stretch & Flexible waistband
- Athletic-fit - non-restrictive with movement
- Interior Waistband Drawcord for the perfect fit
- Vented side hem for breathability
- Large secure zipper cell-phone pocket
- Wide leg design



**MMSLSL3A**  
001 BLACK  
CARRYOVER



**MASLSO3A**  
001 BLACK  
CARRYOVER

Bumper slide placeholder



**TYR** LIGHTWEIGHT KNIT SHORT - 7"  
MSRP: \$69

SIZE: S - XXL

FABRIC: 92% NYLON / 8% SPANDEX

WEIGHT: 242G

FEATURES:

- Slim Fit
- Interior Drawcord
- Zipper Pockets



**B44068**  
001 BLACK  
CARRYOVER



**B44068**  
254 MEDIUM  
HEATHER GREY

# TYR<sup>®</sup> COMPRESSION SHORT

MSRP: \$49

SIZE: S - XXL

**FABRIC:** 78% Recycled Nylon / 22% Xtra Life Nylon

- **ULTRA SOFT JERSEY CONSTRUCTION**
- **MOISTURE WICKING**
- **QUICK DRY**

**WEIGHT:** 190 GSM

**FEATURES:**

- Mid Rise
- 8.5" inseam length
- Comfort logo waistband for unrestricted movement
- Stay-In-Place Leg Band
- Side Phone Pocket
- Front Key Pocket



MCSLSO3A  
001 BLACK  
CARRYOVER



SIZE: S - XXL

**COMPRESSION FABRIC TECHNOLOGY:** 78% RECYCLED

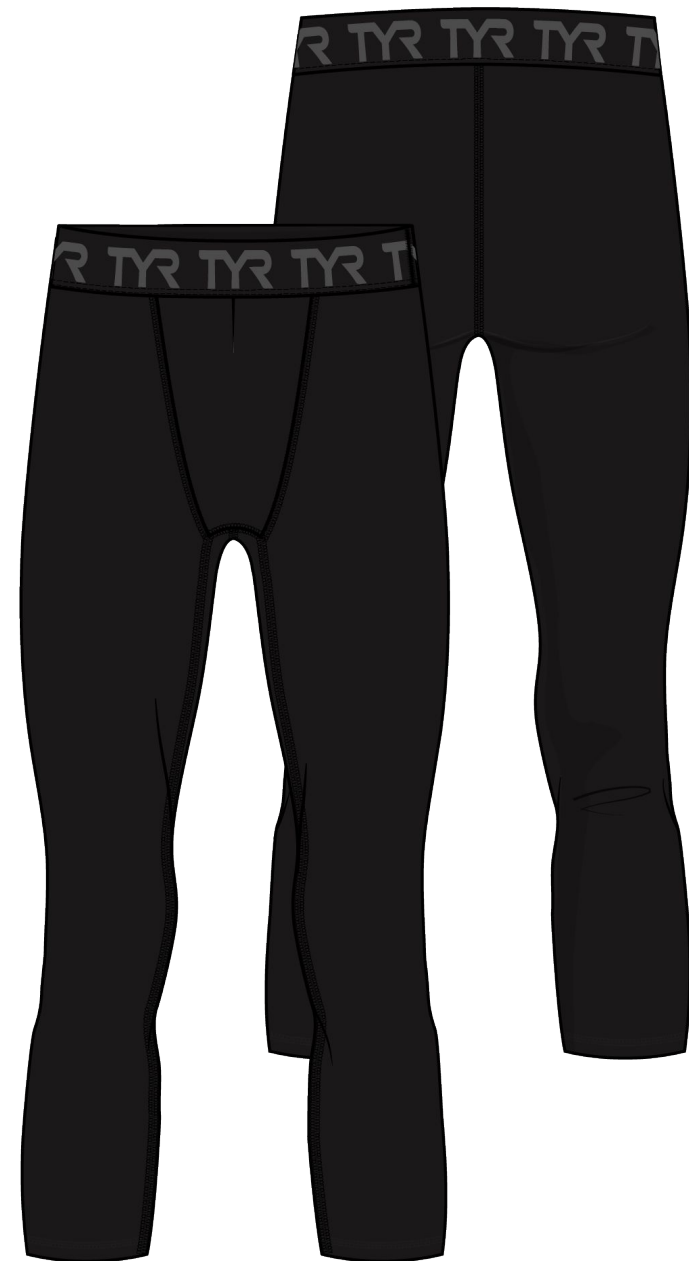
NYLON / 22% XTRA LIFE LYCRA

- REDUCES LACTIC ACID BUILD
- SLEEK PERFORMANCE
- QUICK DRY
- SUSTAINABLE FOOTPRINT

**WEIGHT:** 190 GSM

**FEATURES:**

- Mid Rise
- Comfort logo waistband for unrestricted movement
- Minimal seams for maximum flexibility
- Below the knee length



**MCCSO3A**  
001 BLACK  
CARRYOVER

SIZE: S - XXL

**COMPRESSION FABRIC TECHNOLOGY:** 78% RECYCLED

NYLON / 22% XTRA LIFE LYCRA

- REDUCES LACTIC ACID BUILD
- SLEEK PERFORMANCE
- QUICK DRY
- SUSTAINABLE FOOTPRINT

**WEIGHT:** 190 GSM

**FEATURES:**

- Mid Rise
- Comfort logo waistband for unrestricted movement
- Minimal seams for maximum flexibility
- Full length



**MCTFSO3A**  
001 BLACK  
CARRYOVER





AIRTEC TANK



AIRTEC SS TEE



AIRTEC SS TEE - LARGE LOGO



AIRTEC LS TEE



SLS TECH PERFORMANCE HOODIE



CLIMADRY TECH TANK



CLIMADRY RAGLAN SS TECH TEE



CLIMADRY RAGLAN LS TECH TEE

5"



5" UNBRKN - UNLINED



5" UNBRKN - UNLINED- LG LOGO

6"



6" MOMENTUM - UNLINED



6" MOMENTUM - LG LOGO



6" MOMENTUM - LINED



6" MOMENTUM - LINED - LG LOGO



COMPRESSION LINER

7"



7" UNBRKN - UNLINED



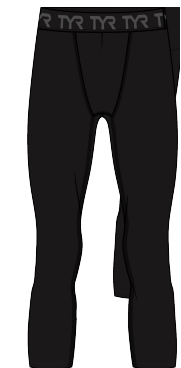
7" UNBRKN - UNLINED - LG LOGO



7" UNBRKN - LINED



7" UNBRKN - LINED - LG LOGO



COMPRESSION CROP



COMPRESSION FULL LENGTH



7" KNIT SHORT



**AIRTEC TANK**



**CLIMADRY TANK**



**AIRTEC SS TEE - LARGE LOGO**



**5" UNBRKN - UNLINED**



**5" UNBRKN - UNLINED- LG LOGO**



**7" UNBRKN - UNLINED**



**7" UNBRKN - UNLINED - LG LOGO**



**7" KNIT SHORT**