

TYR[®]

ALWAYS IN FRONT

WOMEN'S TRAINING APPAREL SPRING/SUMMER 25

4.5.24 V1 | ON-SHELF: 6.1.25



CORE

TYR

JOULEELITE™
FABRIC TECHNOLOGY

- 71% Nylon / 29% Lycra
- Anti-abrasion fabrication to avoid pilling
- Ultimate stretch and recovery
- Optimal compression
- Moisture-wicking
- Quick-drying
- Anti-microbial

WEIGHT: 260 GSM





JOULE ELITE MULTI STRAP SPORTS BRA

MSRP: \$59

SIZE: XS (0/2), S (4/6), M (8), L (10/12), XL (14/16)

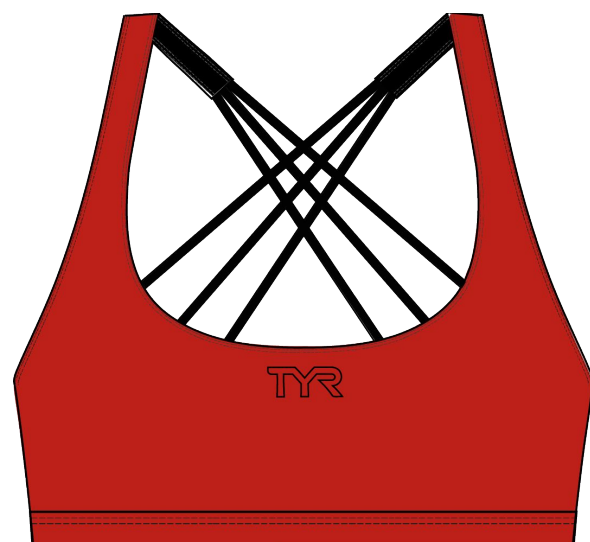
FABRIC: 71% NYLON / 29% LYCRA

- DURABLE ANTI-ABRASION NYLON 6.6 YARNS
- NO PILLING
- STAY FRESH ALL DAY
- ANTIMICROBIAL BUILT IN PERFORMANCE
- MOISTURE WICKING & QUICK DRY
- AMAZING STRETCH & RECOVERY FOR OPTIMAL COMPRESSION

WEIGHT: 260 GSM

FEATURES:

- Removable cups
- Supportive thin strap design
- Stay-In-Place Band
- Minimal Coverage



FEMSSO3A
605 INFRARED



FEMSSO3A
401 NAVY
CARRYOVER



FEMSSO3A
001 BLACK
CARRYOVER

TYR JOULE ELITE SCOOP NECK SPORTS BRA

MSRP: \$59

SIZE: XS (0/2), S (4/6), M (8), L (10/12), XL (14/16)

FABRIC: 71% NYLON / 29% LYCRA

- DURABLE ANTI-ABRASION NYLON 6.6 YARNS
- NO PILLING
- STAY FRESH ALL DAY
- ANTIMICROBIAL BUILT IN PERFORMANCE
- MOISTURE WICKING & QUICK DRY
- AMAZING STRETCH & RECOVERY FOR OPTIMAL COMPRESSION

WEIGHT: 260 GSM

FEATURES:

- Removable cups
- Supportive thin strap design
- Minimal Coverage



T39051
605 INFRARED



T39051
001 BLACK
CARRYOVER

TYR JOULE ELITE HIGH NECK SPORTS BRA

MSRP: \$59

SIZE: XS (0/2), S (4/6), M (8), L (10/12), XL (14/16)

FABRIC: 71% NYLON / 29% LYCRA

- DURABLE ANTI-ABRASION NYLON 6.6 YARNS
- NO PILLING
- STAY FRESH ALL DAY
- ANTIMICROBIAL BUILT IN PERFORMANCE
- MOISTURE WICKING & QUICK DRY
- AMAZING STRETCH & RECOVERY FOR OPTIMAL COMPRESSION

WEIGHT: 260 GSM

FEATURES:

- Maximum coverage
- Supportive cross-back design
- Stay-In-Place Band



T39039
001 BLACK
CARRYOVER

TYR JOULE ELITE DUAL STRAP SPORTS BRA

MSRP: \$59

SIZE: XS (0/2), S (4/6), M (8), L (10/12), XL (14/16)

FABRIC: 71% NYLON / 29% LYCRA

- DURABLE ANTI-ABRASION NYLON 6.6 YARNS
- NO PILLING
- STAY FRESH ALL DAY
- ANTIMICROBIAL BUILT IN PERFORMANCE
- MOISTURE WICKING & QUICK DRY
- AMAZING STRETCH & RECOVERY FOR OPTIMAL COMPRESSION

WEIGHT: 260 GSM

FEATURES:

- Removable Cups
- Supportive Dual Thin Strap Design
- Stay-In-Place Band



T39044
605 INFRARED



T39044
001 BLACK
CARRYOVER



JOULE ELITE CROPPED HIGH NECK TANK

MSRP: \$69

SIZE: XS (0/2), S (4/6), M (8), L (10/12), XL (14/16)

FABRIC: 71% NYLON / 29% LYCRA

- DURABLE ANTI-ABRASION NYLON 6.6 YARNS
- NO PILLING
- STAY FRESH ALL DAY
- ANTIMICROBIAL BUILT IN PERFORMANCE
- MOISTURE WICKING & QUICK DRY
- AMAZING STRETCH & RECOVERY FOR OPTIMAL COMPRESSION

WEIGHT: 260 GSM

FEATURES:

- Removable cups
- Interior Stay-In-Place Band
- Maximum Coverage



FEHNSO3A
605 INFRARED



FEHNSO3A
401 NAVY
CARRYOVER



FEHNSO3A
001 BLACK
CARRYOVER



JOULE ELITE THIN STRAP TANK

MSRP: \$69

SIZE: XS (0/2), S (4/6), M (8), L (10/12), XL (14/16)

FABRIC: 71% NYLON / 29% LYCRA

- DURABLE ANTI-ABRASION NYLON 6.6 YARNS
- NO PILLING
- STAY FRESH ALL DAY
- ANTIMICROBIAL BUILT IN PERFORMANCE
- MOISTURE WICKING & QUICK DRY
- AMAZING STRETCH & RECOVERY FOR OPTIMAL COMPRESSION

WEIGHT: 260 GSM

FEATURES:

- Tight Fit, Waist Length
- Racerback shape allows for full range of motion
- Interior Stay-In-Place Band



T39077
001 BLACK
CARRYOVER



JOULE ELITE LONG SLEEVE 1/4 ZIP

MSRP: \$119

SIZE: XS (0/2), S (4/6), M (8), L (10/12), XL (14/16)

FABRIC: 71% NYLON / 29% LYCRA

- DURABLE ANTI-ABRASION NYLON 6.6 YARNS
- NO PILLING
- STAY FRESH ALL DAY
- ANTIMICROBIAL BUILT IN PERFORMANCE
- MOISTURE WICKING & QUICK DRY
- AMAZING STRETCH & RECOVERY FOR OPTIMAL COMPRESSION

WEIGHT: 260 GSM

FEATURES:

- Reflective 1/4 zip
- Thumbholes at sleeves
- Back Invisible zipper pocket with reflective detail



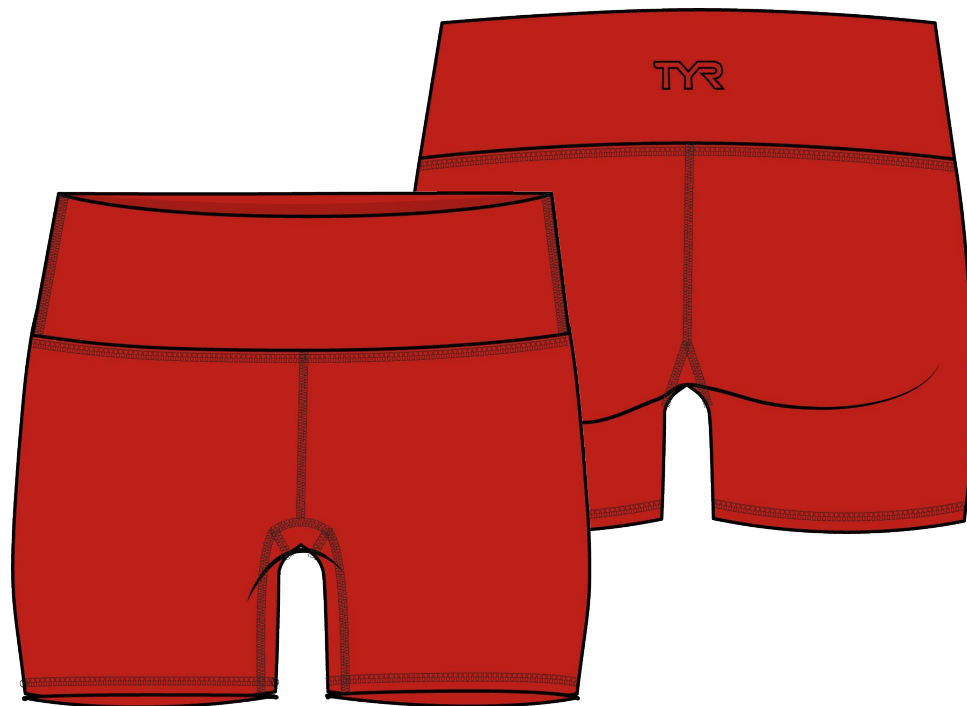
T39080
001 BLACK
CARRYOVER



JOULE ELITE HIGH RISE SHORT 2"

MSRP: \$59

SIZE: XS (0/2), S (4/6), M (8), L (10/12), XL (14/16)



FETSO3A
605 INFRARED



FETSO3A
401 NAVY
CARRYOVER



FETSO3A
001 BLACK
CARRYOVER

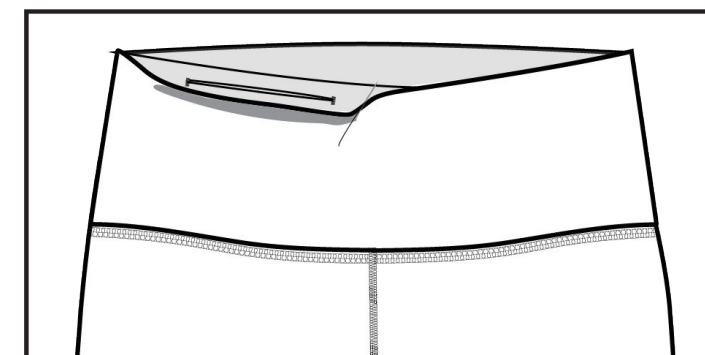
FABRIC: 71% NYLON / 29% LYCRA

- DURABLE ANTI-ABRASION NYLON 6.6 YARNS
- NO PILLING
- STAY FRESH ALL DAY
- ANTIMICROBIAL BUILT IN PERFORMANCE
- MOISTURE WICKING & QUICK DRY
- AMAZING STRETCH & RECOVERY FOR OPTIMAL COMPRESSION

WEIGHT: 260 GSM

FEATURES:

- High waisted compression fit
- Interior waistband bonded pocket



INTERIOR FRONT
EDGE BONDED PKT



JOULE ELITE HIGH RISE SHORT 3.25"

MSRP: \$59

SIZE: XS (0/2), S (4/6), M (8), L (10/12), XL (14/16)

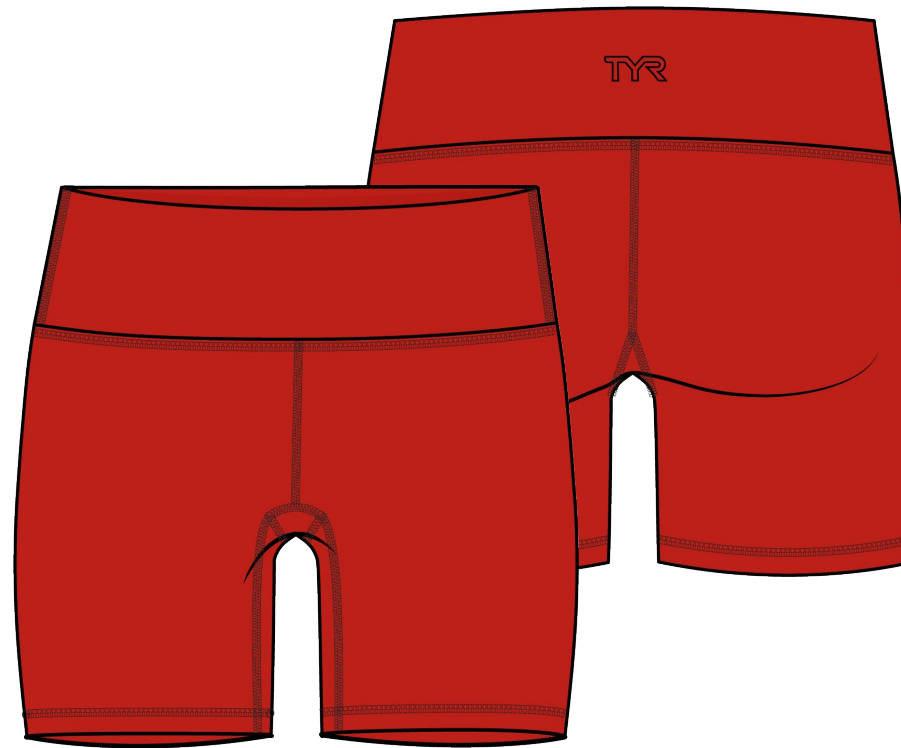
FABRIC: 71% NYLON / 29% LYCRA

- DURABLE ANTI-ABRASION NYLON 6.6 YARNS
- NO PILLING
- STAY FRESH ALL DAY
- ANTIMICROBIAL BUILT IN PERFORMANCE
- MOISTURE WICKING & QUICK DRY
- AMAZING STRETCH & RECOVERY FOR OPTIMAL COMPRESSION

WEIGHT: 260 GSM

FEATURES:

- High waisted compression fit
- Interior waistband bonded pocket



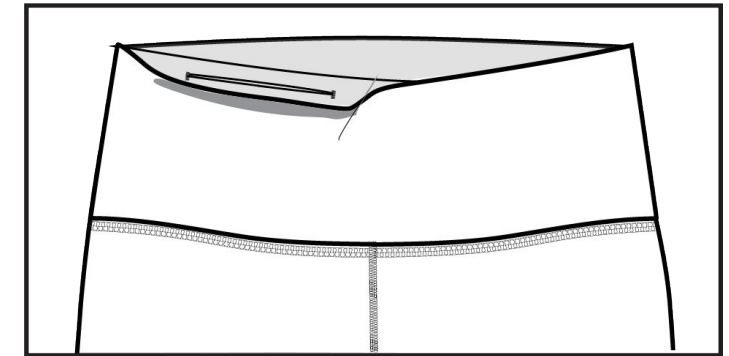
FETHSO3A
605 INFRARED



FETHSO3A
401 NAVY
CARRYOVER



FETHSO3A
001 BLACK
CARRYOVER



INTERIOR FRONT
EDGE BONDED PKT

TYR JOULE ELITE HIGH RISE SHORT 6"

MSRP: \$59

SIZE: XS (0/2), S (4/6), M (8), L (10/12), XL (14/16)

FABRIC: 71% NYLON / 29% LYCRA

- DURABLE ANTI-ABRASION NYLON 6.6 YARNS
- NO PILLING
- STAY FRESH ALL DAY
- ANTIMICROBIAL BUILT IN PERFORMANCE
- MOISTURE WICKING & QUICK DRY
- AMAZING STRETCH & RECOVERY FOR OPTIMAL COMPRESSION

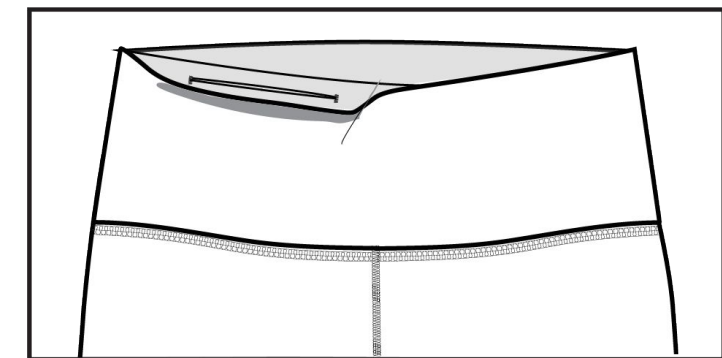
WEIGHT: 260 GSM

FEATURES:

- High waisted compression fit
- Interior waistband bonded pocket



B39031
001 BLACK
CARRYOVER



INTERIOR FRONT
EDGE BONDED PKT



JOULE ELITE HIGH RISE LEGGING 25"

MSRP: \$109

SIZE: XS (0/2), S (4/6), M (8), L (10/12), XL (14/16)

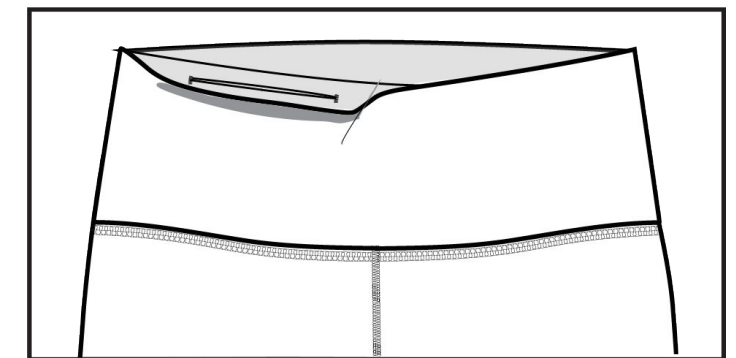
FABRIC: 71% NYLON / 29% LYCRA

- DURABLE ANTI-ABRASION NYLON 6.6 YARNS
- NO PILLING
- STAY FRESH ALL DAY
- ANTIMICROBIAL BUILT IN PERFORMANCE
- MOISTURE WICKING & QUICK DRY
- AMAZING STRETCH & RECOVERY FOR OPTIMAL COMPRESSION

WEIGHT: 260 GSM

FEATURES:

- Ankle length 25" Inseam
- High waisted compression fit
- Interior waistband bonded pocket



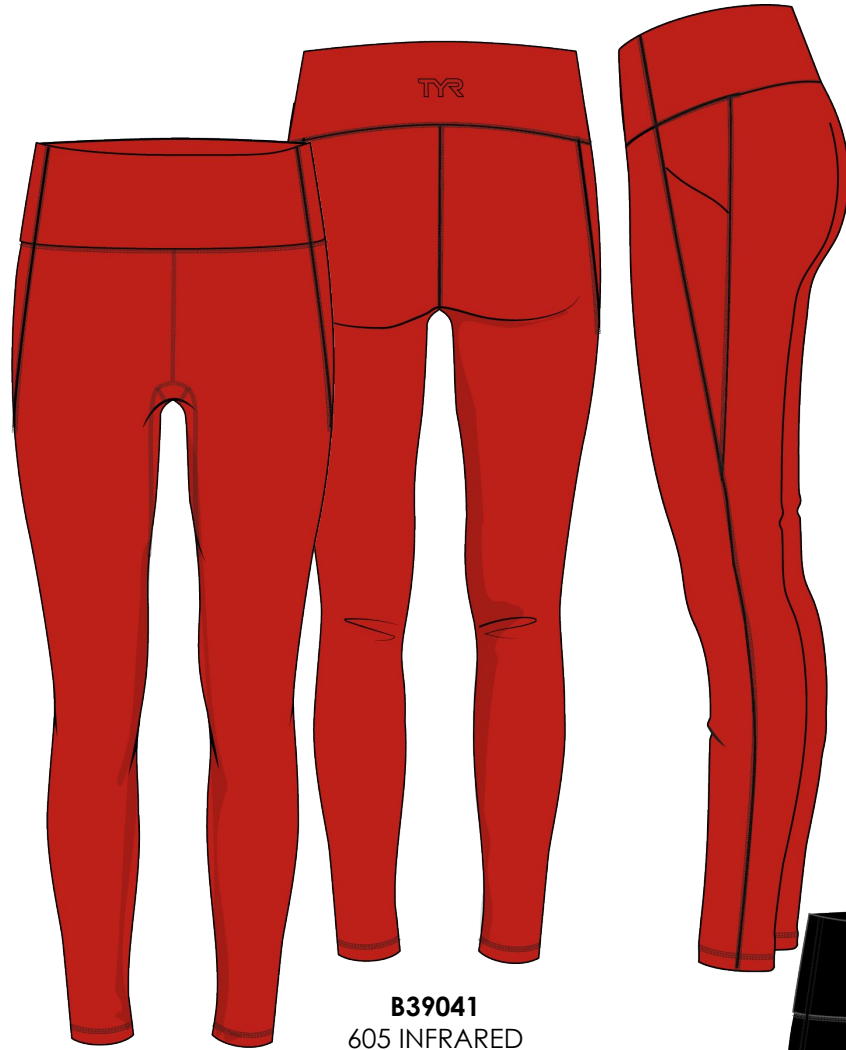
INTERIOR FRONT
EDGE BONDED PKT



JOULE ELITE HIGH RISE LEGGING W/ THIGH POCKET 25"

MSRP: \$119

SIZE: XS (0/2), S (4/6), M (8), L (10/12), XL (14/16)



B39041
605 INFRARED



B39041
001 BLACK
CARRYOVER



B39041
401 NAVY
CARRYOVER

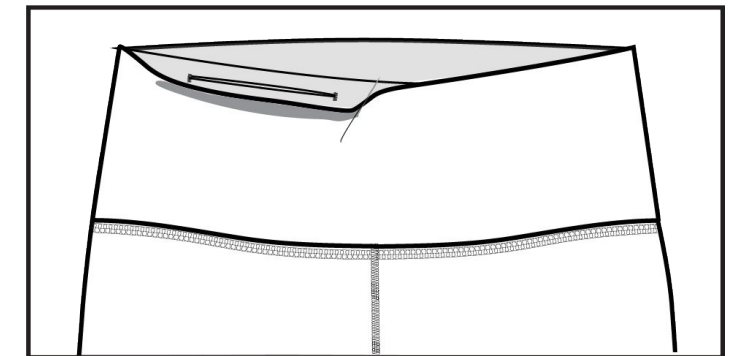
FABRIC: 71% NYLON / 29% LYCRA

- DURABLE ANTI-ABRASION NYLON 6.6 YARNS
- NO PILLING
- STAY FRESH ALL DAY
- ANTIMICROBIAL BUILT IN PERFORMANCE
- MOISTURE WICKING & QUICK DRY
- AMAZING STRETCH & RECOVERY FOR OPTIMAL COMPRESSION

WEIGHT: 260 GSM

FEATURES:

- Ankle length 25" Inseam
- High waisted compression fit
- Thigh Pockets
- Interior waistband bonded pocket



INTERIOR FRONT
EDGE BONDED PKT

The TYR logo is positioned in the top left corner of the image. It consists of the letters 'TYR' in a bold, white, sans-serif font. The background of the entire image is a close-up of a person's midsection wearing dark blue athletic shorts. The lighting is dramatic, highlighting the texture of the fabric and the contours of the body.

BASEKINETIC™ FABRIC TECHNOLOGY

Super soft, quick drying and moisture wicking, Base Kinetic™ fabric keeps you feeling fresh and comfortable throughout any workout.

- 89% Polyester/11% Spandex
- Maximum breathability
- Moisture-wicking
- Quick-drying

WEIGHT: 260 GSM

TYR BASE KINETIC DUAL STRAP SPORTS BRA

MSRP: \$49

SIZE: XS (0/2), S (4/6), M (8), L (10/12), XL (14/16)

FABRIC: 89% POLYESTER / 11% SPANDEX

- PERFORMANCE COMFORT
- MOISTURE WICKING
- QUICK DRY

WEIGHT: 260 GSM

FEATURES:

- Removable Cups
- Supportive Thin Strap Design
- Stay-In-Place Band



FGDSS03A
001 BLACK
CARRYOVER

TYR BASE KINETIC HIGH NECK SPORTS BRA

MSRP: \$49

SIZE: XS (0/2), S (4/6), M (8), L (10/12), XL (14/16)

FABRIC: 89% POLYESTER / 11% SPANDEX

- PERFORMANCE COMFORT
- MOISTURE WICKING
- QUICK DRY

WEIGHT: 260 GSM

FEATURES:

- Maximum coverage
- Supportive cross-back design
- Stay-In-Place Band



FGHSO3A
001 BLACK
CARRYOVER



FGHSOL3A
001 BLACK
CARRYOVER

TYR BASE KINETIC CROSSBACK SPORTS BRA

MSRP: \$49

SIZE: XS (0/2), S (4/6), M (8), L (10/12), XL (14/16)

FABRIC: 89% POLYESTER / 11% SPANDEX

- PERFORMANCE COMFORT
- MOISTURE WICKING
- QUICK DRY

WEIGHT: 260 GSM

FEATURES:

- Maximum Coverage
- Removable Cups
- Supportive cross-back design
- Stay-in-Place Band



FGPSO3A
001 BLACK
CARRYOVER

TYR BASE KINETIC MOD SPORTS BRA

MSRP: \$49

SIZE: XS (0/2), S (4/6), M (8), L (10/12), XL (14/16)

FABRIC: 89% POLYESTER / 11% SPANDEX

- PERFORMANCE COMFORT
- MOISTURE WICKING
- QUICK DRY

WEIGHT: 260 GSM

FEATURES:

- Maximum coverage
- Removable cups
- High neckline
- Logo Stay-in-Place Band



FGMRSO3A
001 BLACK
CARRYOVER

TYR BASE KINETIC CROPPED HIGH NECK TANK

MSRP: \$49

SIZE: XS (0/2), S (4/6), M (8), L (10/12), XL (14/16)

FABRIC: 89% POLYESTER / 11% SPANDEX

- PERFORMANCE COMFORT
- MOISTURE WICKING
- QUICK DRY

WEIGHT: 260 GSM

FEATURES:

- High neck crop top
- "Always in Front" spine logo hit
- Fitted to body



FGCHTS3A
001 BLACK
CARRYOVER

TYR BASE KINETIC MID RISE LOGO SHORT 2"

MSRP: \$49

SIZE: XS (0/2), S (4/6), M (8), L (10/12), XL (14/16)

FABRIC: 89% POLYESTER / 11% SPANDEX

- PERFORMANCE COMFORT
- MOISTURE WICKING
- QUICK DRY

WEIGHT: 260 GSM

FEATURES:

- Mid Rise - Minimal coverage
- Comfort logo waistband for unrestricted movement
- Minimal seams for maximum flexibility



FTMRSL3A
088 BLK/GREY
CARRYOVER

TYR BASE KINETIC HIGH RISE SHORT 2"

MSRP: \$49

SIZE: XS (0/2), S (4/6), M (8), L (10/12), XL (14/16)

FABRIC: 89% POLYESTER / 11% SPANDEX

- PERFORMANCE COMFORT
- MOISTURE WICKING
- QUICK DRY

WEIGHT: 260 GSM

FEATURES:

- High Rise - Maximum coverage
- Minimal seams for maximum flexibility



FTMRSS3A
001 BLACK
CARRYOVER

TYR BASE KINETIC HIGH RISE SHORT 3.25"
MSRP: \$49

SIZE: XS (0/2), S (4/6), M (8), L (10/12), XL (14/16)

FABRIC: 89% POLYESTER / 11% SPANDEX

- PERFORMANCE COMFORT
- MOISTURE WICKING
- QUICK DRY

WEIGHT: 260 GSM



FTFSS3A
001 BLACK
CARRYOVER

FEATURES:

- High Rise - Maximum coverage
- Minimal seams for maximum flexibility

TYR BASE KINETIC HIGH RISE LEGGING 28"

MSRP: \$79

SIZE: XS (0/2), S (4/6), M (8), L (10/12), XL (14/16)

FABRIC: 89% POLYESTER / 11% SPANDEX

- PERFORMANCE COMFORT
- MOISTURE WICKING
- QUICK DRY

WEIGHT: 260 GSM

FEATURES:

- High Rise - Maximum coverage
- Full length 28" inseam
- Minimal seams for maximum flexibility





BASE KINETIC HIGH RISE LEGGING W/ POCKET 28"

MSRP: \$89

SIZE: XS (0/2), S (4/6), M (8), L (10/12), XL (14/16)

FABRIC: 89% POLYESTER / 11% SPANDEX

- PERFORMANCE COMFORT
- MOISTURE WICKING
- QUICK DRY

WEIGHT: 260 GSM

FEATURES:

- High Rise - Maximum coverage
- Full length 28" inseam
- Side Seam Pockets



B39013
001 BLACK
CARRYOVER



TYR

HYDROSPHERE™ FABRIC TECHNOLOGY

Made with sustainable, 4-way stretch materials, this fabric is highly water repellent while remaining durable and soft.

- 54% Recycled Polyester/
32% Polyester/14% Spandex
- Highly water repellent
- Speed dry technology
- Interlocking 4-way stretch
- Sustainable footprint

WEIGHT: 120 GSM



TYR

TYR PACE RUNNING SHORT

MSRP: \$59

SIZE: XS (0/2), S (4/6), M (8), L (10/12), XL (14/16)

HYDROSPHERE FABRICATION: 54% RECYCLED POLYESTER
32% POLYESTER / 14% SPANDEX

- **HIGHLY WATER REPELLENT**
- **SPEED DRY TECHNOLOGY**
- **INTERLOCKING 4-WAY STRETCH**
- **SUSTAINABLE FOOTPRINT**

WEIGHT: 170 GSM

FEATURES:

- Sweat-wicking comfort waistband
- Athletic-fit - non-restrictive with movement
- Wide leg design
- Jersey Lined
- Security zip pocket on wearer's right hip



FRSSO3A
001 BLACK
CARRYOVER

The TYR logo is positioned in the top left corner of the image. It consists of the letters 'TYR' in a bold, white, sans-serif font, with a registered trademark symbol (®) to the right. The background behind the logo is a dark, textured fabric, likely the same material as the shirt being advertised.

AIRTEC™ FABRIC TECHNOLOGY

Ultra lightweight and cool, Airtec™ fabrication puts airflow at the forefront.

- 91% Polyester / 9% Spandex
- Ultra-lightweight cooling fabric
- Moisture-wicking
- Quick-drying

WEIGHT: 145 GSM



SIZE: XS (0/2), S (4/6), M (8), L (10/12), XL (14/16)

AIRTEC FABRIC TECHNOLOGY: 91% POLYESTER / 9% SPANDEX

- **ULTRA LIGHTWEIGHT COOLING FABRIC**
- **MOISTURE WICKING**
- **QUICK DRY**

WEIGHT: 145 GSM

FEATURES:

- Designed for optimal range of motion
- Chafe-free construction - arms & neckline
- Athletic-fit - non-restrictive with movement



TYR AIRTEC CROP TANK

MSRP: \$49

SIZE: XS (0/2), S (4/6), M (8), L (10/12), XL (14/16)

FABRIC: 91% POLYESTER / 9% SPANDEX

- ULTRA SOFT COOLING FABRIC
- MOISTURE WICKING
- QUICK DRY

WEIGHT: 145 GSM

FEATURES:

- Cropped hem
- Relaxed fit
- Chafe-free construction - arms & neckline



TYR AIRTEC SHORT SLEEVE TEE

MSRP: \$59

SIZE: XS (0/2), S (4/6), M (8), L (10/12), XL (14/16)

FABRIC: 91% POLYESTER / 9% SPANDEX

- ULTRA SOFT COOLING FABRIC
- MOISTURE WICKING
- QUICK DRY

WEIGHT: 145 GSM

FEATURES:

- Designed for optimal range of motion
- Chafe-free construction - neckline
- Athletic-fit - non-restrictive with movement



TYR AIRTEC LONG SLEEVE TEE

MSRP: \$69

SIZE: XS (0/2), S (4/6), M (8), L (10/12), XL (14/16)

FABRIC: 91% POLYESTER / 9% SPANDEX

- ULTRA SOFT COOLING FABRIC
- MOISTURE WICKING
- QUICK DRY

WEIGHT: 145 GSM

FEATURES:

- Designed for optimal range of motion
- Chafe-free construction - neckline
- Athletic-fit - non-restrictive with movement



FPTLSO3A
001 BLACK
CARRYOVER

FPTLSO3A
252 HEATHER GREY
CARRYOVER

TYR[®]

CLIMADRY™
FABRIC TECHNOLOGY

- 88% Polyester / 12% Spandex
- Moisture-wicking
- Quick-drying
- Anti-microbial

WEIGHT: 170 GSM



CLIMADRY FABRIC TECHNOLOGY:

88% POLYESTER / 12% SPANDEX

- **MOISTURE WICKING**
- **QUICK DRY**
- **ANTI-MICROBIAL PROTECT**
- **SOFT COMFORT PERFORMANCE**

LIGHTWEIGHT: 170 GSM

FEATURES:

- Designed for optimal range of motion
- Chafe-free construction - neckline
- Athletic-fit - non-restrictive with movement
- Cropped Length



CLIMADRY FABRIC TECHNOLOGY:

88% POLYESTER / 12% SPANDEX

- **MOISTURE WICKING**
- **QUICK DRY**
- **ANTI-MICROBIAL PROTECT**
- **SOFT COMFORT PERFORMANCE**

LIGHTWEIGHT: 170 GSM

FEATURES:

- Chafe-free construction - neckline
- Athletic-fit - non-restrictive with movement
- Cropped Length



T39016
001 BLACK
PHASING OUT

T39016
966 MEDIUM GREY
HEATHER
PHASING OUT

TYR CLIMADRY RAGLAN SHORT SLEEVE TEE

MSRP: \$59

SIZE: XS (0/2), S (4/6), M (8), L (10/12), XL (14/16)

CLIMADRY FABRIC TECHNOLOGY:

88% POLYESTER / 12% SPANDEX

- MOISTURE WICKING
- QUICK DRY
- ANTI-MICROBIAL PROTECT
- SOFT COMFORT PERFORMANCE

LIGHTWEIGHT: 170 GSM

FEATURES:

- Designed for optimal range of motion
- Chafe-free construction - neckline
- Athletic-fit - non-restrictive with movement



FTRS03A
001 BLACK
CARRYOVER

FTRS03A
100 WHITE
CARRYOVER

FTRS03A
966 MEDIUM GREY
HEATHER
CARRYOVER

TYR CLIMADRY RAGLAN LONG SLEEVE TEE

MSRP: \$69

SIZE: XS (0/2), S (4/6), M (8), L (10/12), XL (14/16)

CLIMADRY FABRIC TECHNOLOGY:

88% POLYESTER / 12% SPANDEX

- MOISTURE WICKING
- QUICK DRY
- ANTI-MICROBIAL PROTECT
- SOFT COMFORT PERFORMANCE

LIGHTWEIGHT: 170 GSM

FEATURES:

- Designed for optimal range of motion
- Chafe-free construction - neckline
- Athletic-fit - non-restrictive with movement



BUMPER PAGE PLACEHOLDER



NEW RIBBED TANK TOP

MSRP: \$59

SIZE: XS (0/2), S (4/6), M (8), L (10/12), XL (14/16)

FABRIC: TBD

- MOISTURE WICKING
- QUICK DRY
- ANTI-MICROBIAL PROTECT
- RIBBED TEXTURE

LIGHTWEIGHT: TBD

FEATURES:

- Tight Fit, Waist Length
- Racerback shape allows for full range of motion



T39082
260 BEIGE



T39082
001 BLACK



JOULE - DUAL STRAP



JOULE - MULTI STRAP BRA



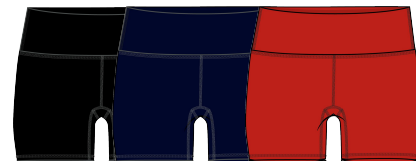
JOULE - SCOOP NECK



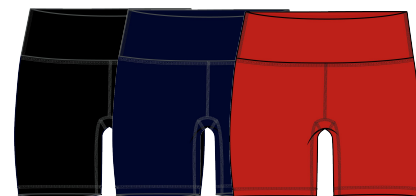
LARGE LOGO



JOULE - CROPPED HIGH NECK



JOULE - HIGH RISE 2"



JOULE - HIGH RISE 3.25"



JOULE - HIGH RISE 6"



JOULE - ANKLE 25"



JOULE - FULL 28" W/ PKT



BASE KINETIC
DUAL STRAP



BASE KINETIC
CROSS BACK



HIGH NECK



LARGE LOGO



BASE KINETIC
MOD RACER



BASE KINETIC - CROP
TANK



BASE KINETIC
2" MID RISE



BASE KINETIC
2" HIGH RISE



BASE KINETIC
3.25" HIGH RISE



BASE KINETIC
FULL 28"



BASE KINETIC FULL
28" W/ PKT



AIRTEC TANK



AIRTEC CROP TANK



AIRTEC SS TEE



AIRTEC LS TEE



RIBBED TANK



CLIMADRY CROP TECH TANK



CLIMADRY CROP TECH TEE



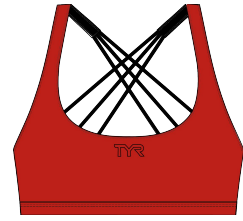
CLIMADRY RAGLAN SS TEE



CLIMADRY RAGLAN LS TEE



JOULE - DUAL STRAP



JOULE - MULTI STRAP BRA



JOULE - SCOOP NECK



JOULE - CROPPED HIGH NECK



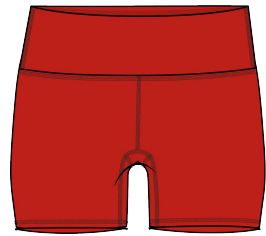
CLIMADRY CROP TANK



AIRTEC CROP TANK



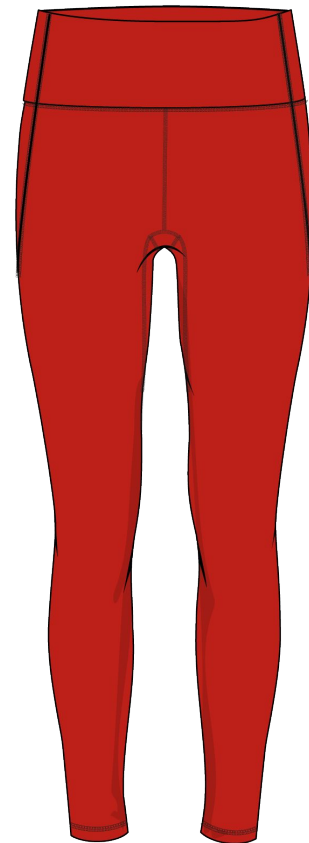
AIRTEC SS TEE



JOULE - HIGH RISE 2"



JOULE - HIGH RISE 3.25"



JOULE - ANKLE 25" W/ PKT



RIBBED TANK