

**TYR®**

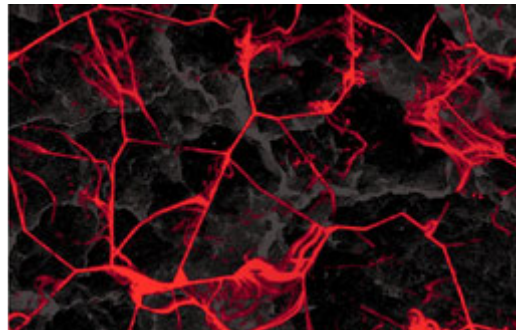
---

**ALWAYS IN FRONT**

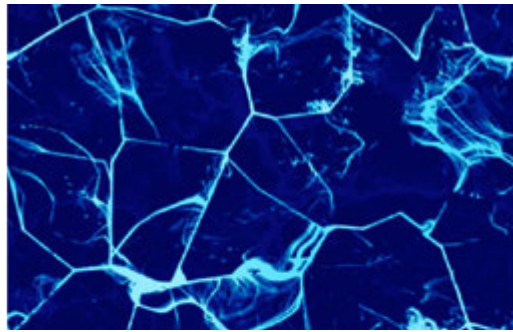
**PERFORMANCE SWIM FALL/ WINTER 2024**

9.26.23 | ON-SHELF: 7.1.24

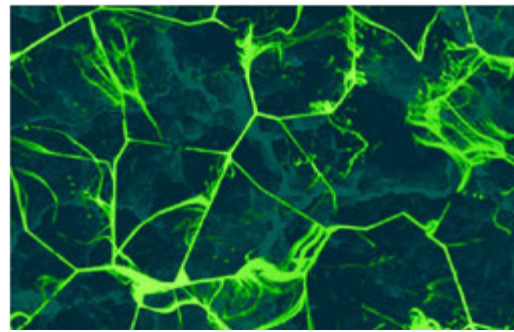
**“SYNAPSE”**



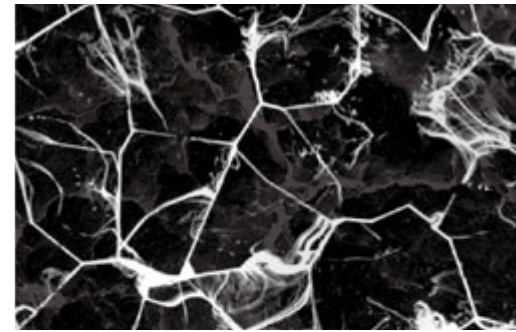
610 RED



420 BLUE

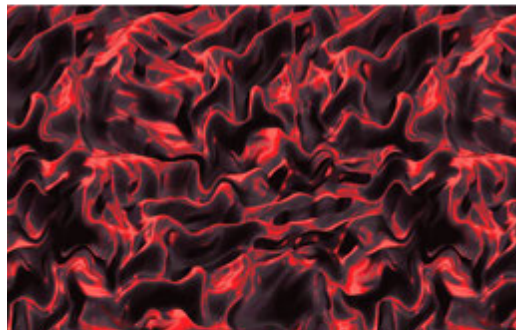


310 GREEN

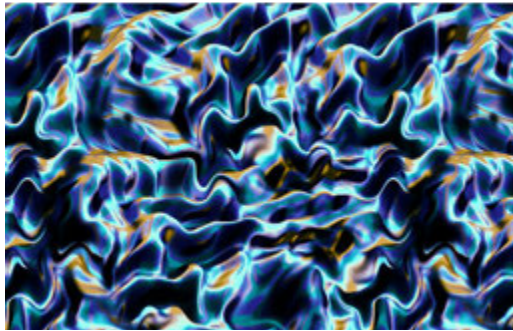


140 TITANIUM

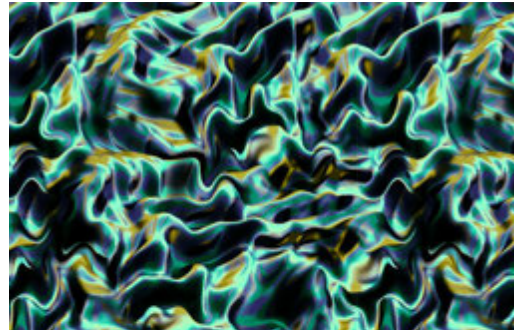
**“ENERGIA”**



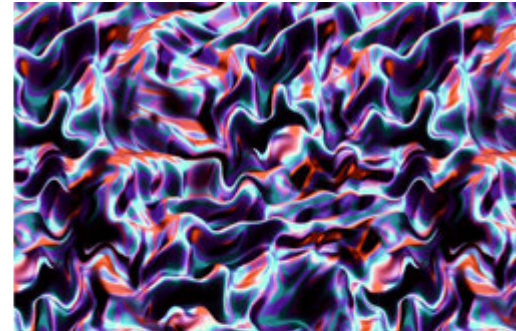
610 RED



420 BLUE



310 GREEN



960 MULTI

**“STARBORNE”**



610 RED



420 BLUE



310 GREEN

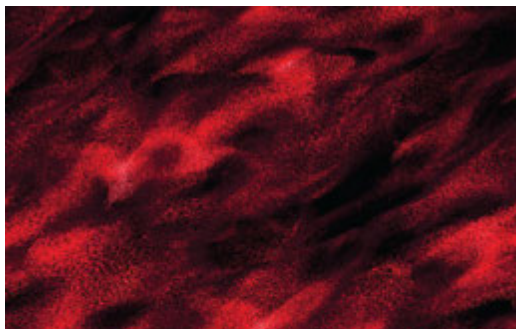


510 PURPLE

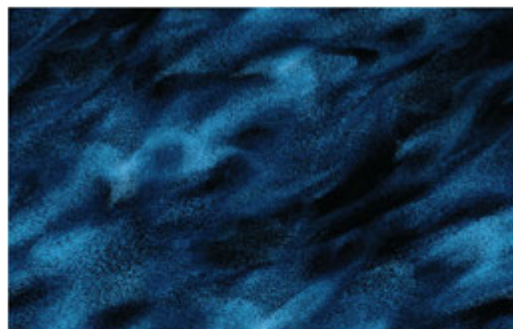


487 BLUE/GREEN

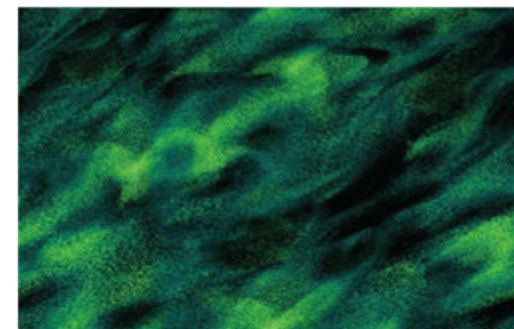
**“SOREN”**



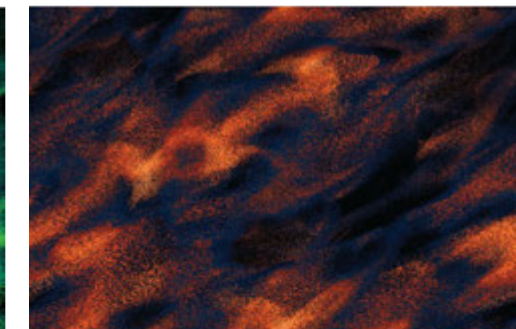
610 RED



420 BLUE



310 GREEN



810 ORANGE

**DURAFAST**<sup>®</sup>  
E L I T E

**300+ HOURS OF PERFORMANCE**

100% CHLORINE PROOF  
ANTIMICROBIAL LINING  
100% COLORFAST  
UPF 50+ TECHNOLOGY



**LINED/FULLY LINED**

Allows for flattering coverage and modesty



**UPF 50+ UV PROTECTION**

Effectively blocks ultraviolet (UV) radiation for safety during outdoor sun exposure

# TYR DIAMONDFIT- DURAFast ELITE- "SYNAPSE"

MSRP: \$89.99

SIZE: (A: 26-40) or (Y: 22-24)



DSYN7 (A&Y)  
610 RED



DSYN7 (A&Y)  
420 BLUE



DSYN7 (A&Y)  
310 GREEN



DSYN7 (A&Y)  
140 TITANIUM

**OUTER FABRIC:** 94% POLYESTER, 6% SPANDEX

- 300+ HOURS OF PERFORMANCE
- 100% CHLORINE PROOF
- 100% COLORFAST
- UPF 50+ TECHNOLOGY

**WEIGHT:** 230 GSM

**LINER FABRIC:** 100% POLYESTER

**FEATURES:**

- SUPPORTIVE AND FLEXIBLE STRAPS
- HIGH CUT LEG
- KEYHOLE BACK
- FULLY LINED WITH ANTIMICROBIAL LINING

# TYR MAXFIT- DURAFast ELITE - "SYNAPSE"

MSRP: \$89.99

SIZE: (A: 26-40) or (Y: 22-24)



MSYN7 (A&Y)  
610 RED



MSYN7 (A&Y)  
420 BLUE



MSYN7 (A&Y)  
310 GREEN



MSYN7 (A&Y)  
140 TITANIUM

**OUTER FABRIC:** 94% POLYESTER, 6% SPANDEX

- 300+ HOURS OF PERFORMANCE
- 100% CHLORINE PROOF
- 100% COLORFAST
- UPF 50+ TECHNOLOGY

**WEIGHT:** 230 GSM

**LINER FABRIC:** 100% POLYESTER

**FEATURES:**

- THICK AND SECURE STRAPS
- KEYHOLE BACK
- MODERATE CUT LEG
- FULLY LINED WITH ANTIMICROBIAL LINING
- EMBROIDERED LOGO

# TYR JAMMER- DURAFast ELITE - "SYNAPSE"

MSRP: \$59.99

SIZE: (A: 26-38) or (Y: 22-24)



SSYN7 (A&Y)  
610 RED



SSYN7 (A&Y)  
420 BLUE



SSYN7 (A&Y)  
310 GREEN



SSYN7 (A&Y)  
140 TITANIUM



**OUTER FABRIC:** 94% POLYESTER, 6% SPANDEX

- 300+ HOURS OF PERFORMANCE
- 100% CHLORINE PROOF
- 100% COLORFAST
- UPF 50+ TECHNOLOGY

**WEIGHT:** 230 GSM

**LINER FABRIC:** 100% POLYESTER

**FEATURES:**

- FULLY LINED
- ANTIMICROBIAL LINING
- CHAMPIONSHIP CUT
- ADJUSTABLE CORD AT WAIST
- EMBROIDERED LOGO

# TYR DIAMONDFIT- DURAFast ELITE - "ENERGIA"

MSRP: \$89.99

SIZE: (A: 26-40) or (Y: 22-24)



DENE7 (A&Y)  
610 RED



DENE7 (A&Y)  
420 BLUE



DENE7 (A&Y)  
310 GREEN



DENE7 (A&Y)  
960 MULTI

**OUTER FABRIC:** 94% POLYESTER, 6% SPANDEX

- 300+ HOURS OF PERFORMANCE
- 100% CHLORINE PROOF
- 100% COLORFAST
- UPF 50+ TECHNOLOGY

**WEIGHT:** 230 GSM

**LINER FABRIC:** 100% POLYESTER

**FEATURES:**

- SUPPORTIVE AND FLEXIBLE STRAPS
- HIGH CUT LEG
- KEYHOLE BACK
- FULLY LINED WITH ANTIMICROBIAL LINING

# TYR CUTOUTFIT- DURAFast ELITE - "ENERGIA"

MSRP: \$89.99

SIZE: (A: 26-40) or (Y: 22-24)



CENE7 (A&Y)  
610 RED



CENE7 (A&Y)  
420 BLUE



CENE7 (A&Y)  
310 GREEN



CENE7 (A&Y)  
960 MULTI

**OUTER FABRIC:** 94% POLYESTER, 6% SPANDEX

- 300+ HOURS OF PERFORMANCE
- 100% CHLORINE PROOF
- 100% COLORFAST
- UPF 50+ TECHNOLOGY

**WEIGHT:** 230 GSM

**LINER FABRIC:** 100% POLYESTER

**FEATURES:**

- FULLY LINED FOR FLATTERING COVERAGE & MODESTY
- ANTIMICROBIAL LINING





# BLADE SPLICE JAMMER- DURAFast ELITE - "ENERGIA"

MSRP: \$59.99

SIZE: (A: 26-38) or (Y: 22-24)



SENE7 (A&Y)  
610 RED



SENE7 (A&Y)  
420 BLUE



SENE7 (A&Y)  
310 GREEN



SENE7 (A&Y)  
960 MULTI



**OUTER FABRIC:** 94% POLYESTER, 6% SPANDEX

- 300+ HOURS OF PERFORMANCE
- 100% CHLORINE PROOF
- 100% COLORFAST
- UPF 50+ TECHNOLOGY

**WEIGHT:** 230 GSM

**LINER FABRIC:** 100% POLYESTER

**FEATURES:**

- FULLY LINED
- ANTIMICROBIAL LINING
- CHAMPIONSHIP CUT
- ADJUSTABLE CORD AT WAIST
- EMBROIDERED LOGO

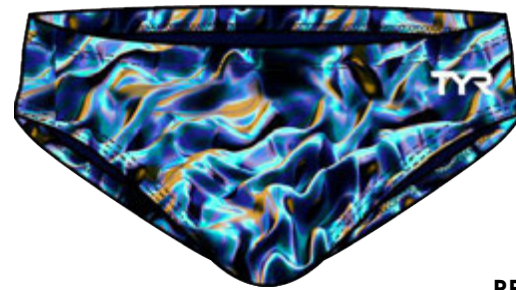
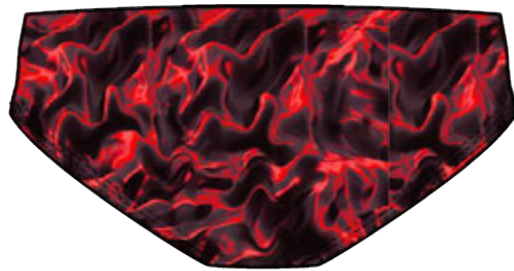
# TYR BRIEF- DURAFast ELITE - "ENERGIA"

MSRP: \$49.99

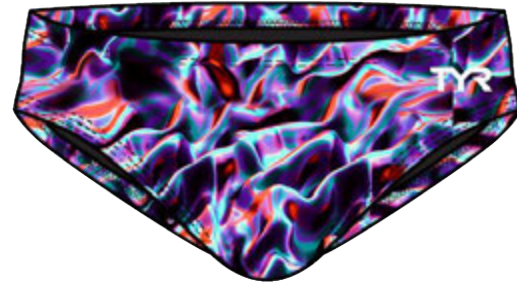
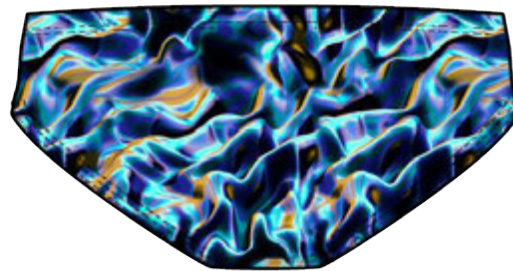
SIZE: (A: 26-38) or (Y: 22-24)



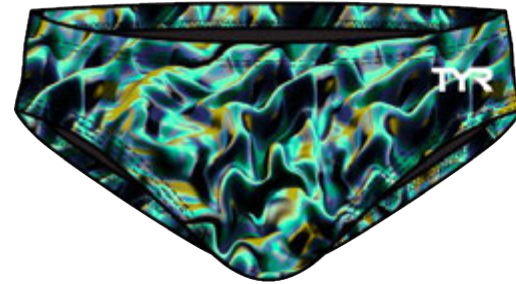
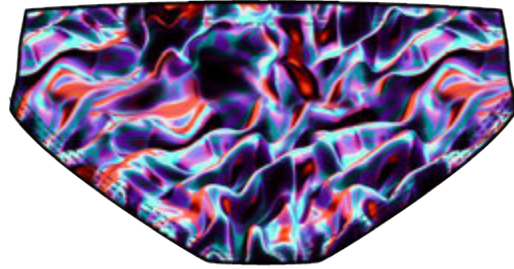
RENE7A  
610 RED



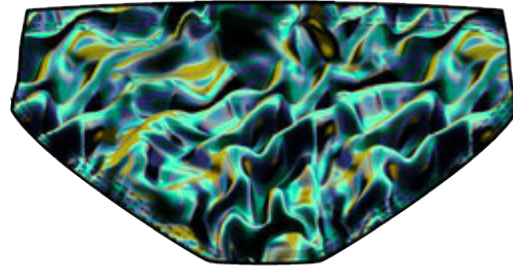
RENE7A  
420 BLUE



RENE7A  
960 MULTI



RENE7A  
310 GREEN



**OUTER FABRIC:** 94% POLYESTER, 6% SPANDEX

- 300+ HOURS OF PERFORMANCE
- 100% CHLORINE PROOF
- 100% COLORFAST
- UPF 50+ TECHNOLOGY

**WEIGHT:** 230 GSM

**LINER FABRIC:** 100% POLYESTER

**FEATURES:**

- FULLY LINED
- ANTIMICROBIAL LINING
- ADJUSTABLE CORD AT WAIST
- EMBROIDERED LOGO

**TYR** DIAMONDFIT- DURAFast ELITE - "STARBORNE"  
MSRP: \$89.99

SIZE: (A: 26-40) or (Y: 22-24)



DSTA7 (A&Y)  
610 RED



DSTA7 (A&Y)  
487 BLUE/GREEN



DSTA7 (A&Y)  
510 PURPLE



DSTA7 (A&Y)  
310 GREEN



DSTA7 (A&Y)  
420 BLUE

**OUTER FABRIC:** 94% POLYESTER, 6% SPANDEX

- 300+ HOURS OF PERFORMANCE
- 100% CHLORINE PROOF
- 100% COLORFAST
- UPF 50+ TECHNOLOGY

**WEIGHT:** 230 GSM

**LINER FABRIC:** 100% POLYESTER

**FEATURES:**

- SUPPORTIVE AND FLEXIBLE STRAPS
- HIGH CUT LEG
- KEYHOLE BACK
- FULLY LINED WITH ANTIMICROBIAL LINING

# TYR CUTOUTFIT- DURAFast ELITE - "STARBORNE"

MSRP: \$89.99

SIZE: (A: 26-40) or (Y: 22-24)



CSTA7 (A&Y)  
610 RED



CSTA7 (A&Y)  
487 BLUE/GREEN



CSTA7 (A&Y)  
510 PURPLE



CSTA7 (A&Y)  
310 GREEN



CSTA7 (A&Y)  
420 BLUE

**OUTER FABRIC:** 94% POLYESTER, 6% SPANDEX

- 300+ HOURS OF PERFORMANCE
- 100% CHLORINE PROOF
- 100% COLORFAST
- UPF 50+ TECHNOLOGY

**WEIGHT:** 230 GSM

**LINER FABRIC:** 100% POLYESTER

**FEATURES:**

- FULLY LINED FOR FLATTERING COVERAGE & MODESTY
- ANTIMICROBIAL LINING

# TYR JAMMER- DURAFast ELITE - "STARBORNE"

MSRP: \$59.99

SIZE: (A: 26-38) or (Y: 22-24)

OUTER FABRIC: 94% POLYESTER, 6% SPANDEX

- 300+ HOURS OF PERFORMANCE
- 100% CHLORINE PROOF
- 100% COLORFAST
- UPF 50+ TECHNOLOGY

WEIGHT: 230 GSM

LINER FABRIC: 100% POLYESTER

FEATURES:

- FULLY LINED
- ANTIMICROBIAL LINING
- CHAMPIONSHIP CUT
- ADJUSTABLE CORD AT WAIST
- EMBROIDERED LOGO



SSTA7 (A&Y)  
610 RED



SSTA7 (A&Y)  
487 BLUE/GREEN



SSTA7 (A&Y)  
510 PURPLE



SSTA7 (A&Y)  
310 GREEN



SSTA7 (A&Y)  
420 BLUE



# TYR DIAMONDFIT- DURAFast ELITE- "SOREN"

MSRP: \$89.99

SIZE: (A: 26-40) or (Y: 22-24)



DSOR7 (A&Y)  
610 RED



DSOR7 (A&Y)  
420 BLUE



DSOR7 (A&Y)  
310 GREEN



DSOR7 (A&Y)  
810 ORANGE

**OUTER FABRIC:** 94% POLYESTER, 6% SPANDEX

- 300+ HOURS OF PERFORMANCE
- 100% CHLORINE PROOF
- 100% COLORFAST
- UPF 50+ TECHNOLOGY

**WEIGHT:** 230 GSM

**LINER FABRIC:** 100% POLYESTER

**FEATURES:**

- SUPPORTIVE AND FLEXIBLE STRAPS
- HIGH CUT LEG
- KEYHOLE BACK
- FULLY LINED WITH ANTIMICROBIAL LINING

# TYR TRINITY FIT - DURAFast ELITE - "SOREN"

MSRP: \$89.99

SIZE: (A: 26-40) or (Y: 22-24)



TTSOR7 (A&Y)  
610 RED



TTSOR7 (A&Y)  
810 ORANGE



TTSOR7 (A&Y)  
310 GREEN



TTSOR7 (A&Y)  
420 BLUE

**OUTER FABRIC:** 94% POLYESTER, 6% SPANDEX

- 300+ HOURS OF PERFORMANCE
- 100% CHLORINE PROOF
- 100% COLORFAST
- UPF 50+ TECHNOLOGY

**WEIGHT:** 230 GSM

**LINER FABRIC:** 100% POLYESTER

**FEATURES:**

- FULLY LINED FOR FLATTERING COVERAGE & MODESTY
- ANTIMICROBIAL LINING

# TYR BLADE SPLICE JAMMER- DURAFast ELITE - "SOREN"

MSRP: \$59.99

SIZE: (A: 26-38) or (Y: 22-24)

**OUTER FABRIC:** 94% POLYESTER, 6% SPANDEX

- 300+ HOURS OF PERFORMANCE
- 100% CHLORINE PROOF
- 100% COLORFAST
- UPF 50+ TECHNOLOGY

**WEIGHT:** 230 GSM

**LINER FABRIC:** 100% POLYESTER

**FEATURES:**

- FULLY LINED
- ANTIMICROBIAL LINING
- CHAMPIONSHIP CUT
- ADJUSTABLE CORD AT WAIST
- EMBROIDERED LOGO



SSOR7 (A&Y)  
610 RED



SSOR7 (A&Y)  
420 BLUE



SSOR7 (A&Y)  
310 GREEN



SSOR7 (A&Y)  
810 ORANGE





# TYR<sup>®</sup> BRIEF- DURAFast ELITE - "SOREN"

MSRP: \$49.99

SIZE: (A: 26-38) or (Y: 22-24)



RSOR7 (A&Y)  
610 RED



RSOR7 (A&Y)  
420 BLUE



RSOR7 (A&Y)  
310 GREEN



RSOR7 (A&Y)  
810 ORANGE

**OUTER FABRIC:** 94% POLYESTER, 6% SPANDEX

- 300+ HOURS OF PERFORMANCE
- 100% CHLORINE PROOF
- 100% COLORFAST
- UPF 50+ TECHNOLOGY

**WEIGHT:** 230 GSM

**LINER FABRIC:** 100% POLYESTER

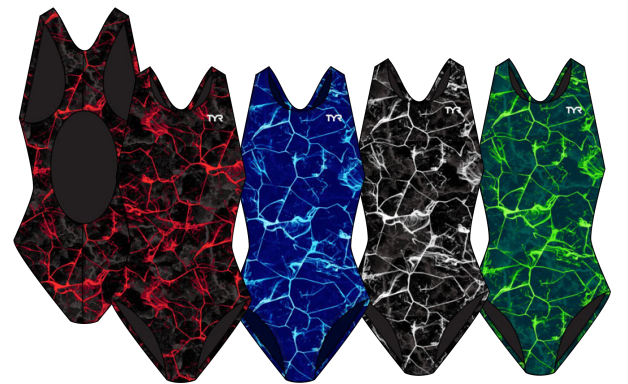
**FEATURES:**

- FULLY LINED
- ANTIMICROBIAL LINING
- ADJUSTABLE CORD AT WAIST
- EMBROIDERED LOGO

“SYNAPSE”



DIAMOND  
FIT



MAX FIT



JAMMER

‘ENERGIA’



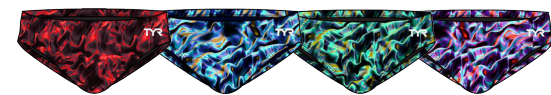
DIAMOND  
FIT



CUTOUT FIT



BLADE SPLICE  
JAMMER



BRIEF

‘STARBORNE’



DIAMOND  
FIT



CUTOUT FIT



JAMMER

“SOREN”



DIAMOND  
FIT



TRINITY FIT



BLADE SPLICE  
JAMMER



BRIEF

**CARRYOVERS**

# TYR DIAMONDFIT- DURAFAST ELITE

MSRP: \$74.99

SIZE: (A: 26 (XS), 28 (S), 30 (S), 32 (M), 34 (M), 36 (L), 38 (XL), 40 (1X)) or (Y: 22-24)



**DDUS7(A&Y)**  
001 BLACK  
CARRYOVER



**DDUS7(A&Y)**  
401 NAVY  
CARRYOVER



**DDUS7(A)**  
610 RED  
CARRYOVER



**DDUS7(A&Y)**  
428 ROYAL  
CARRYOVER

**DURAFAST ELITE FABRIC:** 94% POLYESTER, 6% SPANDEX

- 300+ HOURS OF PERFORMANCE
- 100% CHLORINE PROOF
- 100% COLORFAST
- UPF 50+ TECHNOLOGY

**WEIGHT:** 230 GSM

**LINER FABRIC:** 100% POLYESTER

**FEATURES:**

- SUPPORTIVE AND FLEXIBLE STRAPS
- HIGH CUT LEG
- KEYHOLE BACK
- FULLY LINED WITH ANTIMICROBIAL LINING
- EMBROIDERED LOGO

# TYR MAXFIT- DURAFAST ELITE

MSRP: \$74.99

SIZE: (A: 26 (XS), 28 (S), 30 (S), 32 (M), 34 (M), 36 (L), 38 (XL), 40 (1X)) or (Y: 22-24)

**DURAFAST ELITE FABRIC:** 94% POLYESTER, 6% SPANDEX

- 300+ HOURS OF PERFORMANCE
- 100% CHLORINE PROOF
- 100% COLORFAST
- UPF 50+ TECHNOLOGY

**WEIGHT:** 230 GSM

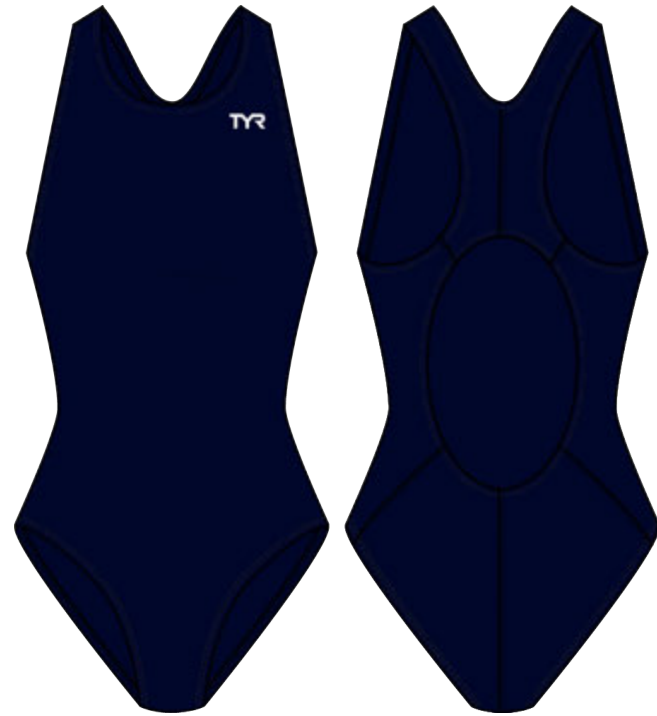
**LINER FABRIC:** 100% POLYESTER

**FEATURES:**

- THICK AND SECURE STRAPS
- KEYHOLE BACK
- MODERATE CUT LEG
- FULLY LINED WITH ANTIMICROBIAL LINING
- EMBROIDERED LOGO



**MDUS7(A&Y)**  
001 BLACK  
CARRYOVER



**MDUS7(A&Y)**  
401 NAVY  
CARRYOVER



**MDUS7(A&Y)**  
428 ROYAL  
CARRYOVER

# TYR CUTOUTFIT- DURAFAST ELITE

MSRP: \$74.99

SIZE: (A: 26 (XS), 28 (S), 30 (S), 32 (M), 34 (M), 36 (L), 38 (XL), 40 (1X) or (Y: 22-24)



**TFDUS7 (A&Y)**  
001 BLACK  
CARRYOVER



**TFDUS7 (A&Y)**  
401 NAVY  
CARRYOVER



**TFDUS7 (A&Y)**  
428 ROYAL  
CARRYOVER

**DURAFAST ELITE FABRIC:** 94% POLYESTER, 6% SPANDEX

- 300+ HOURS OF PERFORMANCE
- 100% CHLORINE PROOF
- 100% COLORFAST
- UPF 50+ TECHNOLOGY

**WEIGHT:** 230 GSM

**LINER FABRIC:** 100% POLYESTER

**FEATURES:**

- HIGH CUT LEG
- LOW CUT BACK
- SUPPORTIVE AND FLEXIBLE STRAPS
- FULLY LINED WITH ANTIMICROBIAL LINING
- EMBROIDERED LOGO



**TTSD7A**  
001 BLACK  
CARRYOVER

**TTSD7A**  
401 NAVY  
CARRYOVER

**DURAFAST ELITE FABRIC:** 94% POLYESTER, 6% SPANDEX

- 300+ HOURS OF PERFORMANCE
- 100% CHLORINE PROOF
- 100% COLORFAST
- UPF 50+ TECHNOLOGY

**WEIGHT:** 230 GSM

**LINER FABRIC:** 100% POLYESTER

**FEATURES:**

- SUPPORTIVE AND FLEXIBLE STRAPS
- TRIPLE BOUND KEYHOLE CROSS BACK
- FULLY LINED WITH ANTIMICROBIAL LINING

# TYR JAMMER- DURAFAST ELITE

MSRP: \$54.99

SIZE: (A: 26 (XS), 28 (S), 30 (S), 32 (M), 34 (M), 36 (L), 38 (XL) or (Y: 22-24)



**SDUS7 (A&Y)**  
001 BLACK  
CARRYOVER

**SDUS7 (A&Y)**  
401 NAVY  
CARRYOVER

**SDUS7 (A&Y)**  
428 ROYAL  
CARRYOVER

**DURAFAST ELITE FABRIC:** 94% POLYESTER, 6% SPANDEX

- 300+ HOURS OF PERFORMANCE
- 100% CHLORINE PROOF
- 100% COLORFAST
- UPF 50+ TECHNOLOGY

**WEIGHT:** 230 GSM

**LINER FABRIC:** 100% POLYESTER

**FEATURES:**

- FULLY LINED WITH ANTIMICROBIAL LINING
- CHAMPIONSHIP CUT
- ADJUSTABLE DRAWCORD AT WAIST
- EMBROIDERED LOGO



# TYR BRIEF- DURAFAST ELITE

MSRP: \$39.99

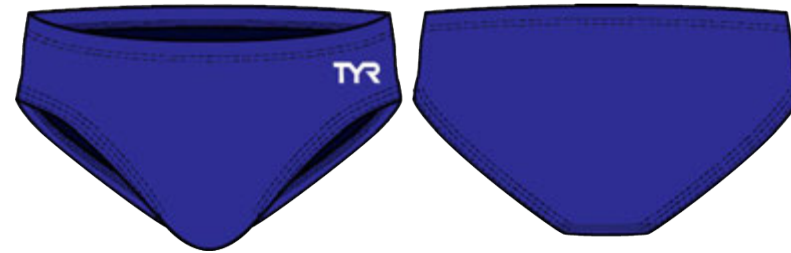
SIZE: (A: 26 (XS), 28 (S), 30 (S), 32 (M), 34 (M), 36 (L), 38 (XL), 40 (1X) or (Y: 22-24)



**RDUS7 (A & Y)**  
001 BLACK  
CARRYOVER



**RDUS7 (A & Y)**  
401 NAVY  
CARRYOVER



**RDUS7 (A & Y)**  
428 ROYAL  
CARRYOVER

**DURAFAST ELITE FABRIC:** 94% POLYESTER, 6% SPANDEX

- 300+ HOURS OF PERFORMANCE
- 100% CHLORINE PROOF
- 100% COLORFAST
- UPF 50+ TECHNOLOGY

**WEIGHT:** 230 GSM

**LINER FABRIC:** 100% POLYESTER

**FEATURES:**

- FULLY LINED WITH ANTIMICROBIAL LINING
- ADJUSTABLE DRAWCORD AT WAIST
- EMBROIDERED LOGO

# TYR SQUARE LEG- DURAFAST ELITE

MSRP: \$49.99

SIZE: 26 (XS), 28 (S), 30 (S), 32 (M), 34 (M), 36 (L), 38 (XL)

**DURAFAST ELITE FABRIC:** 94% POLYESTER, 6% SPANDEX

- 300+ HOURS OF PERFORMANCE
- 100% CHLORINE PROOF
- 100% COLORFAST
- UPF 50+ TECHNOLOGY

**WEIGHT:** 230 GSM

**LINER FABRIC:** 100% POLYESTER

**FEATURES:**

- FULLY LINED WITH ANTIMICROBIAL LINING
- CHAMPIONSHIP CUT
- ADJUSTABLE DRAWCORD AT WAIST
- EMBROIDERED LOGO



**SQDUS7 (A)**  
001 BLACK  
CARRYOVER



**SQDUS7 (A)**  
401 NAVY  
CARRYOVER

# TYR DIAMONDFIT- DURAFAST ELITE- HEXA

MSRP: \$79.99

SIZE: (A: 26 (XS), 28 (S), 30 (S), 32 (M), 34 (M), 36 (L), 38 (XL), 40 (1X)) or (Y: 22-24)



**DHEX7(A&Y)**  
002 BLACK/ RED  
CARRYOVER

**DHEX7(A&Y)**  
062 BLACK/ ORANGE  
CARRYOVER

**DHEX7(A&Y)**  
008 BLACK/ GOLD  
CARRYOVER

**DHEX7(A&Y)**  
014 BLACK/ GREEN  
CARRYOVER



**DHEX7(A&Y)**  
093 BLACK/ BLUE  
CARRYOVER

**DHEX7(A&Y)**  
068 BLACK/ PURPLE  
CARRYOVER

**DHEX7(A&Y)**  
060 BLACK/ WHITE  
CARRYOVER



**DHEX7(A&Y)**  
404 NAVY/ RED  
CARRYOVER

**DHEX7(A&Y)**  
406 NAVY/ ORANGE  
CARRYOVER

**DHEX7(A&Y)**  
409 NAVY/ GOLD  
CARRYOVER

**DHEX7(A&Y)**  
408 NAVY/ WHITE  
CARRYOVER

**DURAFAST ELITE FABRIC:** 94% POLYESTER, 6% SPANDEX

- 300+ HOURS OF PERFORMANCE
- 100% CHLORINE PROOF
- 100% COLORFAST
- UPF 50+ TECHNOLOGY

**WEIGHT:** 230 GSM

**LINER FABRIC:** 100% POLYESTER

**FEATURES:**

- SUPPORTIVE AND FLEXIBLE STRAPS
- HIGH CUT LEG
- KEYHOLE BACK
- FULLY LINED WITH ANTIMICROBIAL LINING
- EMBROIDERED LOGO

# TYR CUTOUTFIT- DURAFAST ELITE- HEXA

MSRP: \$79.99

SIZE: A: 26 (XS), 28 (S), 30 (S), 32 (M), 34 (M), 36 (L), 38 (XL), 40 (1X) or (Y: 22-24)

**DURAFAST ELITE FABRIC:** 94% POLYESTER, 6% SPANDEX

- 300+ HOURS OF PERFORMANCE
- 100% CHLORINE PROOF
- 100% COLORFAST
- UPF 50+ TECHNOLOGY

**WEIGHT:** 230 GSM

**LINER FABRIC:** 100% POLYESTER

**FEATURES:**

- HIGH CUT LEG
- LOW CUT BACK
- SUPPORTIVE AND FLEXIBLE STRAPS
- FULLY LINED WITH ANTIMICROBIAL LINING
- EMBROIDERED LOGO



**CHEX7(A&Y)**  
002 BLACK/ RED  
CARRYOVER



**CHEX7(A&Y)**  
062 BLACK/ ORANGE  
CARRYOVER



**CHEX7(A&Y)**  
008 BLACK/ GOLD  
CARRYOVER



**CHEX7(A&Y)**  
014 BLACK/ GREEN  
CARRYOVER



**CHEX7(A&Y)**  
093 BLACK/ BLUE  
CARRYOVER



**CHEX7(A&Y)**  
068 BLACK/ PURPLE  
CARRYOVER



**CHEX7(A&Y)**  
060 BLACK/ WHITE  
CARRYOVER



**CHEX7(A&Y)**  
404 NAVY/ RED  
CARRYOVER



**CHEX7(A&Y)**  
406 NAVY/ ORANGE  
CARRYOVER



**CHEX7(A&Y)**  
409 NAVY/ GOLD  
CARRYOVER



**CHEX7(A&Y)**  
408 NAVY/ WHITE  
CARRYOVER

# TYR TRINITYFIT- DURAFAST ELITE- HEXA

MSRP: \$79.99

SIZE: A: 26 (XS), 28 (S), 30 (S), 32 (M), 34 (M), 36 (L), 38 (XL), 40 (1X) or (Y: 22-24)



**THEX7(A&Y)**  
002 BLACK/ RED  
CARRYOVER



**THEX7(A&Y)**  
062 BLACK/ ORANGE  
CARRYOVER



**THEX7(A&Y)**  
008 BLACK/ GOLD  
CARRYOVER



**THEX7(A&Y)**  
014 BLACK/ GREEN  
CARRYOVER



**THEX7(A&Y)**  
093 BLACK/ BLUE  
CARRYOVER



**THEX7(A&Y)**  
068 BLACK/ PURPLE  
CARRYOVER



**THEX7(A&Y)**  
060 BLACK/ WHITE  
CARRYOVER



**THEX7(A&Y)**  
404 NAVY/ RED  
CARRYOVER



**THEX7(A&Y)**  
406 NAVY/ ORANGE  
CARRYOVER



**THEX7(A&Y)**  
409 NAVY/ GOLD  
CARRYOVER



**THEX7(A&Y)**  
408 NAVY/ WHITE  
CARRYOVER

**DURAFAST ELITE FABRIC:** 94% POLYESTER, 6% SPANDEX

- 300+ HOURS OF PERFORMANCE
- 100% CHLORINE PROOF
- 100% COLORFAST
- UPF 50+ TECHNOLOGY

**WEIGHT:** 230 GSM

**LINER FABRIC:** 100% POLYESTER

**FEATURES:**

- SUPPORTIVE AND FLEXIBLE STRAPS
- TRIPLE BOUND KEYHOLE CROSS BACK
- FULLY LINED WITH ANTIMICROBIAL LINING
- EMBROIDERED LOGO

# TYR CURVE SPLICE JAMMER- DURAFAST ELITE- HEXA

MSRP: \$59.99

SIZE: (A: 26 (XS), 28 (S), 30 (S), 32 (M), 34 (M), 36 (L), 38 (XL), 40 (1X) or (Y: 22-24)

**DURAFAST ELITE FABRIC:** 94% POLYESTER, 6% SPANDEX

- 300+ HOURS OF PERFORMANCE
- 100% CHLORINE PROOF
- 100% COLORFAST
- UPF 50+ TECHNOLOGY

**WEIGHT:** 230 GSM

**LINER FABRIC:** 100% POLYESTER

**FEATURES:**

- FULLY LINED WITH ANTIMICROBIAL LINING
- CHAMPIONSHIP CUT
- ADJUSTABLE DRAWCORD AT WAIST
- EMBROIDERED LOGO



**SHEXA7(A&Y)**  
002 BLACK/ RED  
CARRYOVER

**SHEXA7(A&Y)**  
062 BLACK/ ORANGE  
CARRYOVER

**SHEXA7(A&Y)**  
008 BLACK/ GOLD  
CARRYOVER



**SHEXA7(A&Y)**  
014 BLACK/ GREEN  
CARRYOVER

**SHEXA7(A&Y)**  
093 BLACK/ BLUE  
CARRYOVER

**SHEXA7(A&Y)**  
068 BLACK/ PURPLE  
CARRYOVER

**SHEXA7(A&Y)**  
060 BLACK/ WHITE  
CARRYOVER



**SHEXA7(A&Y)**  
404 NAVY/ RED  
CARRYOVER

**SHEXA7(A&Y)**  
406 NAVY/ ORANGE  
CARRYOVER

**SHEXA7(A&Y)**  
409 NAVY/ GOLD  
CARRYOVER

**SHEXA7(A&Y)**  
408 NAVY/ WHITE  
CARRYOVER

# TYR BRIEF- DURAFAST ELITE- HEXA

MSRP: \$49.99

SIZE: (A: 26 (XS), 28 (S), 30 (S), 32 (M), 34 (M), 36 (L), 38 (XL), 40 (1X) or (Y: 22-24)

**DURAFAST ELITE FABRIC:** 94% POLYESTER, 6% SPANDEX

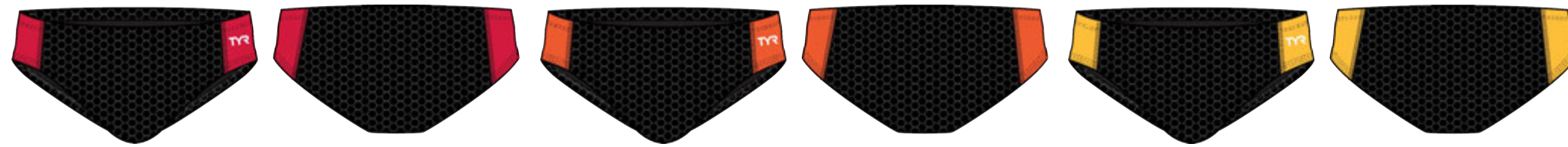
- 300+ HOURS OF PERFORMANCE
- 100% CHLORINE PROOF
- 100% COLORFAST
- UPF 50+ TECHNOLOGY

**WEIGHT:** 230 GSM

**LINER FABRIC:** 100% POLYESTER

**FEATURES:**

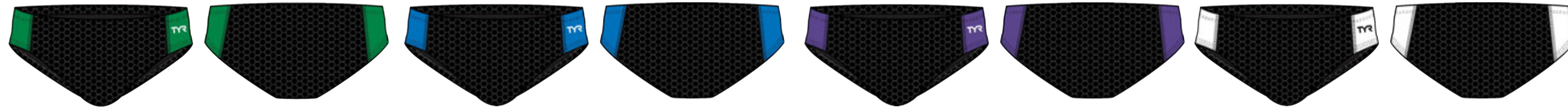
- FULLY LINED WITH ANTIMICROBIAL LINING
- ADJUSTABLE DRAWCORD AT WAIST
- EMBROIDERED LOGO



**RHEXA7(A&Y)**  
002 BLACK/ RED  
CARRYOVER

**RHEXA7(A&Y)**  
062 BLACK/ ORANGE  
CARRYOVER

**RHEXA7(A&Y)**  
008 BLACK/ GOLD  
CARRYOVER

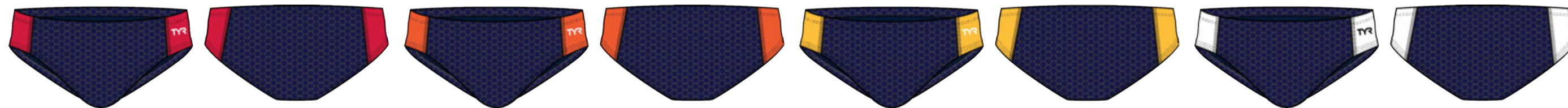


**RHEXA7(A&Y)**  
014 BLACK/ GREEN  
CARRYOVER

**RHEXA7(A&Y)**  
093 BLACK/ BLUE  
CARRYOVER

**RHEXA7(A&Y)**  
068 BLACK/ PURPLE  
CARRYOVER

**RHEXA7(A&Y)**  
060 BLACK/ WHITE  
CARRYOVER



**RHEXA7(A&Y)**  
404 NAVY/ RED  
CARRYOVER

**RHEXA7(A&Y)**  
406 NAVY/ ORANGE  
CARRYOVER

**RHEXA7(A&Y)**  
409 NAVY/ GOLD  
CARRYOVER

**RHEXA7(A&Y)**  
408 NAVY/ WHITE  
CARRYOVER

**TYReco**™







**DSOL1 (A & Y)**  
 001 BLACK  
 CARRYOVER

**DSOL1 (A & Y)**  
 425 ROYAL  
 CARRYOVER

**DSOL1 (A & Y)**  
 402 NAVY  
 CARRYOVER

**DSOL1A**  
 140 TITANIUM  
 CARRYOVER



**DSOL1A**  
 359 MARINE  
 CARRYOVER

**DSOL1A**  
 372 SURF BLUE  
 CARRYOVER

**DSOL1A**  
 321 EMERALD  
 CARRYOVER

**DSOL1A**  
 436 PEACOCK  
 CARRYOVER



**DSOL1A**  
 019 GREY  
 CARRYOVER

**DSOL1A**  
 503 BURGUNDY  
 CARRYOVER

**DSOL1A**  
 620 MAGENTA  
 CARRYOVER

**DSOL1A**  
 666 FUCHSIA  
 CARRYOVER

**TYR ECO FABRIC:** 80% NYLON, 20% XTRA LIFE LYCRA

- ENVIRONMENTALLY FRIENDLY
- 100% CHLORINE PROOF
- 100% COLORFAST
- UPF 50+ TECHNOLOGY

**WEIGHT:** 190 GSM

**LINER FABRIC:** 92% POLYESTER/ 8% SPANDEX (JERSEY)

**FEATURES:**

- SUPPORTIVE AND FLEXIBLE STRAPS
- HIGH CUT LEG
- KEYHOLE BACK
- FULLY LINED WITH JERSEY LINING
- EMBROIDERED LOGO



**MSO1 (A&Y)**  
001 BLACK  
CARRYOVER

**MSO1 (A&Y)**  
402 NAVY  
CARRYOVER

**MSO1 (A&Y)**  
425 ROYAL  
CARRYOVER

**TYR ECO FABRIC:** 80% NYLON, 20% XTRA LIFE LYCRA

- ENVIRONMENTALLY FRIENDLY
- 100% CHLORINE PROOF
- 100% COLORFAST
- UPF 50+ TECHNOLOGY

**WEIGHT:** 190 GSM

**LINER FABRIC:** 92% POLYESTER/ 8% SPANDEX (JERSEY)

**FEATURES:**

- THICK AND SECURE STRAPS
- KEYHOLE BACK
- MODEST CUT LEG
- FULLY LINED WITH JERSEY LINING
- EMBROIDERED LOGO



**RJAM1(A & Y)**  
001 BLACK  
CARRYOVER

**RJAM1(A & Y)**  
425 ROYAL  
CARRYOVER

**RJAM1(A & Y)**  
402 NAVY  
CARRYOVER

**RJAM1A**  
140 TITANIUM  
CARRYOVER



**RJAM1A**  
359 MARINE  
CARRYOVER

**RJAM1A**  
372 SURF BLUE  
CARRYOVER

**RJAM1A**  
321 EMERALD  
CARRYOVER

**RJAM1A**  
436 PEACOCK  
CARRYOVER



**RJAM1A**  
019 GREY  
CARRYOVER

**RJAM1A**  
503 BURGUNDY  
CARRYOVER

**RJAM1A**  
620 MAGENTA  
CARRYOVER

**RJAM1A**  
666 FUCHSIA  
CARRYOVER

**TYR ECO FABRIC:** 80% NYLON, 20% XTRA LIFE LYCRA

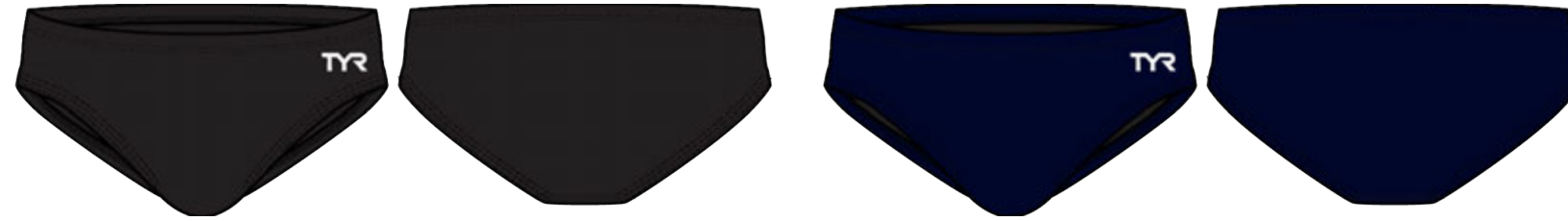
- ENVIRONMENTALLY FRIENDLY
- 100% CHLORINE PROOF
- 100% COLORFAST
- UPF 50+ TECHNOLOGY

**WEIGHT:** 190 GSM

**LINER FABRIC:** 92% POLYESTER/ 8% SPANDEX (JERSEY)

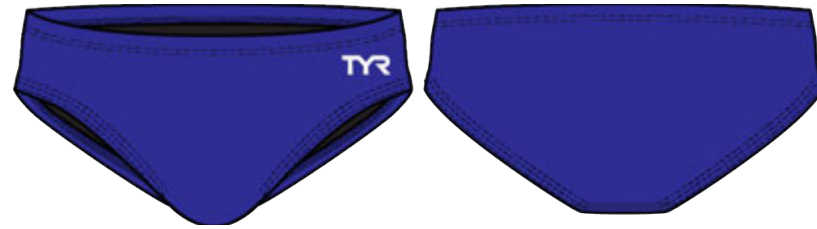
**FEATURES:**

- FULLY LINED WITH JERSEY LINING
- CHAMPIONSHIP CUT
- ADJUSTABLE DRAWCORD AT WAIST
- EMBROIDERED LOGO



**RSO1A**  
001 BLACK  
CARRYOVER

**RSO1A**  
402 NAVY  
CARRYOVER



**RSO1A**  
425 ROYAL  
CARRYOVER

**TYR ECO FABRIC:** 80% NYLON, 20% XTRA LIFE LYCRA

- ENVIRONMENTALLY FRIENDLY
- 100% CHLORINE PROOF
- 100% COLORFAST
- UPF 50+ TECHNOLOGY

**WEIGHT:** 190 GSM

**LINER FABRIC:** 92% POLYESTER/ 8% SPANDEX (JERSEY)

**FEATURES:**

- FULLY LINED WITH JERSEY LINING
- ADJUSTABLE DRAWCORD AT WAIST
- EMBROIDERED LOGO

# TYR SQUARE LEG- TYRECO

MSRP: \$44.99

SIZE: 30 (S), 32 (M), 34 (M), 36 (L), 38 (XL), 40 (1X)



SSQU1A  
001 BLACK  
CARRYOVER



SSQU1A  
401 NAVY  
CARRYOVER

**TYR ECO FABRIC:** 80% NYLON, 20% XTRA LIFE LYCRA

- ENVIRONMENTALLY FRIENDLY
- 100% CHLORINE PROOF
- 100% COLORFAST
- UPF 50+ TECHNOLOGY

**WEIGHT:** 190 GSM

**LINER FABRIC:** 92% POLYESTER/ 8% SPANDEX (JERSEY)

**FEATURES:**

- FULLY LINED WITH JERSEY LINING
- CHAMPIONSHIP CUT
- ADJUSTABLE DRAWCORD AT WAIST
- EMBROIDERED LOGO

**TYR** DIAMONDFIT- TYRECO- ALLIANCE SPLICE  
 MSRP: \$79.99

SIZE: (A: 26 (XS), 28 (S), 30 (S), 32 (M), 34 (M), 36 (L), 38 (XL), 40 (1X))



DSPN1A  
 002 BLACK/ RED  
 CARRYOVER



DSPN1A  
 093 BLACK/ BLUE  
 CARRYOVER



DSPN1A  
 060 BLACK/ WHITE  
 CARRYOVER



DSPN1A  
 408 NAVY/ WHITE  
 CARRYOVER

**TYR ECO FABRIC:** 80% NYLON, 20% XTRA LIFE LYCRA

- ENVIRONMENTALLY FRIENDLY
- 100% CHLORINE PROOF
- 100% COLORFAST
- UPF 50+ TECHNOLOGY

**WEIGHT:** 190 GSM

**LINER FABRIC:** 92% POLYESTER/ 8% SPANDEX (JERSEY)

**FEATURES:**

- ATHLETIC SPLICE LINES
- SUPPORTIVE AND FLEXIBLE STRAPS
- HIGH CUT LEG
- KEYHOLE BACK
- FULLY LINED WITH JERSEY LINING
- EMBROIDERED LOGO

# TYR MAXFIT- TYRECO - ALLIANCE SPLICE

MSRP: \$79.99

SIZE: (A: 26 (XS), 28 (S), 30 (S), 32 (M), 34 (M), 36 (L), 38 (XL), 40 (1X)) or (Y: 22-24)



**MALIT1(A&Y)**  
002 BLACK/ RED  
CARRYOVER

**MALIT1(A&Y)**  
062 BLACK/ ORANGE  
CARRYOVER

**MALIT1(A&Y)**  
008 BLACK/ GOLD  
CARRYOVER

**MALIT1(A&Y)**  
014 BLACK/ GREEN  
CARRYOVER



**MALIT1(A&Y)**  
093 BLACK/ BLUE  
CARRYOVER

**MALIT1(A&Y)**  
063 BLACK/ BURGUNDY  
CARRYOVER

**MALIT1(A&Y)**  
060 BLACK/ WHITE  
CARRYOVER



**MALIT1(A&Y)**  
404 NAVY/ RED  
CARRYOVER

**MALIT1(A&Y)**  
408 NAVY/ WHITE  
CARRYOVER

**MALIT1(A&Y)**  
409 NAVY/ GOLD  
CARRYOVER

**MALIT1(A&Y)**  
470 ROYAL/ GOLD  
CARRYOVER

**TYR ECO FABRIC:** 80% NYLON, 20% XTRA LIFE LYCRA

- ENVIRONMENTALLY FRIENDLY
- 100% CHLORINE PROOF
- 100% COLORFAST
- UPF 50+ TECHNOLOGY

**WEIGHT:** 190 GSM

**LINER FABRIC:** 92% POLYESTER/ 8% SPANDEX (JERSEY)

**FEATURES:**

- ATHLETIC SPLICE LINES
- THICK AND SECURE STRAPS
- KEYHOLE BACK
- MODERATE CUT LEG
- FULLY LINED WITH JERSEY LINING
- EMBROIDERED LOGO

# TYR JAMMER- TYRECO - ALLIANCE SPLICE

MSRP: \$59.99

SIZE: (A: 26 (XS), 28 (S), 30 (S), 32 (M), 34 (M), 36 (L), 38 (XL) or (Y: 22-24)

TYR ECO FABRIC: 80% NYLON, 20% XTRA LIFE LYCRA

- ENVIRONMENTALLY FRIENDLY
- 100% CHLORINE PROOF
- 100% COLORFAST
- UPF 50+ TECHNOLOGY

WEIGHT: 190 GSM

LINER FABRIC: 92% POLYESTER/ 8% SPANDEX (JERSEY)

FEATURES:

- ATHLETIC SPLICE LINES
- FULLY LINED WITH JERSEY LINING
- CHAMPIONSHIP CUT
- ADJUSTABLE DRAWCORD AT WAIST
- EMBROIDERED LOGO



**SALI1(A&Y)**  
002 BLACK/ RED  
CARRYOVER

**SALI1(A&Y)**  
062 BLACK/ ORANGE  
CARRYOVER

**SALI1(A&Y)**  
008 BLACK/ GOLD  
CARRYOVER



**SALI1(A&Y)**  
014 BLACK/ GREEN  
CARRYOVER

**SALI1(A&Y)**  
093 BLACK/ BLUE  
CARRYOVER

**SALI1(A&Y)**  
068 BLACK/ PURPLE  
CARRYOVER

**SALI1(A&Y)**  
060 BLACK/ WHITE  
CARRYOVER



**SALI1(A&Y)**  
404 NAVY/ RED  
CARRYOVER

**SALI1(A&Y)**  
406 NAVY/ ORANGE  
CARRYOVER

**SALI1(A&Y)**  
409 NAVY/ GOLD  
CARRYOVER

**SALI1(A&Y)**  
408 NAVY/ WHITE  
CARRYOVER



# TYR BRIEF- TYRECO - ALLIANCE SPLICE

MSRP: \$49.99

SIZE: (A: 26 (XS), 28 (S), 30 (S), 32 (M), 34 (M), 36 (L), 38 (XL), 40 (1X))

**TYR ECO FABRIC:** 80% NYLON, 20% XTRA LIFE LYCRA

- ENVIRONMENTALLY FRIENDLY
- 100% CHLORINE PROOF
- 100% COLORFAST
- UPF 50+ TECHNOLOGY

**WEIGHT:** 190 GSM

**LINER FABRIC:** 92% POLYESTER/ 8% SPANDEX (JERSEY)

**FEATURES:**

- ATHLETIC SPLICE LINES
- FULLY LINED WITH JERSEY LINING
- ADJUSTABLE DRAWCORD AT WAIST
- EMBROIDERED LOGO



**RALI1A**  
002 BLACK/ RED  
CARRYOVER



**RALI1A**  
014 BLACK/ GREEN  
CARRYOVER



**RALI1A**  
093 BLACK/ BLUE  
CARRYOVER



**RALI1A**  
409 NAVY/ GOLD  
CARRYOVER

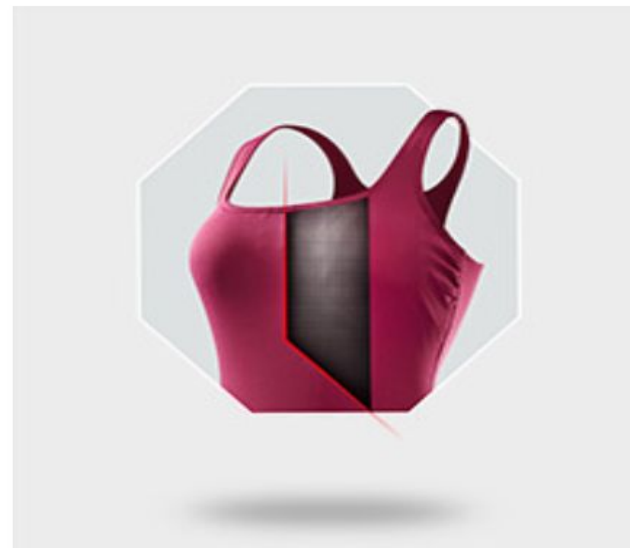
**DURAFAST**<sup>®</sup>  
ONE

**300+ HOURS OF PERFORMANCE**

100% CHLORINE PROOF

100% COLORFAST

UPF 50+ TECHNOLOGY



**LINED/FULLY LINED**

Allows for flattering coverage



**UPF 50+ UV PROTECTION**

Effectively blocks ultraviolet (UV) radiation for safety during outdoor sun exposure

# TYR DIAMONDFIT- DURAFAST ONE

MSRP: \$69.99

SIZE: (A: 26 (XS), 28 (S), 30 (S), 32 (M), 34 (M), 36 (L), 38 (XL), 40 (1X)) or (Y: 22-24)



DDRF7 (A & Y)  
001 BLACK  
CARRYOVER



DDRF7 (A & Y)  
401 NAVY  
CARRYOVER

**DURAFAST ONE FABRIC:** 51% RECYCLED POLY/ 49% POLY

- 300+ HOURS OF PERFORMANCE
- 100% CHLORINE PROOF
- 100% COLORFAST
- UPF 50+ TECHNOLOGY

**WEIGHT:** 170 GSM

**LINER FABRIC:** 100% POLYESTER

**FEATURES:**

- SUPPORTIVE AND FLEXIBLE STRAPS
- HIGH CUT LEG
- KEYHOLE BACK
- FULLY LINED WITH ANTIMICROBIAL LINING
- EMBROIDERED LOGO

# TYR MAXFIT- DURAFAST ONE

MSRP: \$69.99

SIZE: (A: 26 (XS), 28 (S), 30 (S), 32 (M), 34 (M), 36 (L), 38 (XL), 40 (1X)) or (Y: 22-24)



MDUR7(A & Y)  
001 BLACK  
CARRYOVER



MDUR7(A & Y)  
401 NAVY  
CARRYOVER

**DURAFAST ONE FABRIC:** 51% RECYCLED POLY/ 49% POLY

- 300+ HOURS OF PERFORMANCE
- 100% CHLORINE PROOF
- 100% COLORFAST
- UPF 50+ TECHNOLOGY

**WEIGHT:** 170 GSM

**LINER FABRIC:** 100% POLYESTER

**FEATURES:**

- THICK AND SECURE STRAPS
- KEYHOLE BACK
- MODERATE CUT LEG
- FULLY LINED WITH ANTIMICROBIAL LINING
- EMBROIDERED LOGO

# TYR CUTOUTFIT- DURAFAST ONE

MSRP: \$69.99

SIZE: 26 (XS), 28 (S), 30 (S), 32 (M), 34 (M), 36 (L), 38 (XL)



TFSOD7A  
001 BLACK  
CARRYOVER



TFSOD7A  
401 NAVY  
CARRYOVER

**DURAFAST ONE FABRIC:** 51% RECYCLED POLY/ 49% POLY

- 300+ HOURS OF PERFORMANCE
- 100% CHLORINE PROOF
- 100% COLORFAST
- UPF 50+ TECHNOLOGY

**WEIGHT:** 170 GSM

**LINER FABRIC:** 100% POLYESTER

**FEATURES:**

- HIGH CUT LEG
- LOW CUT BACK
- SUPPORTIVE AND FLEXIBLE STRAPS
- FULLY LINED WITH ANTIMICROBIAL LINING
- EMBROIDERED LOGO

# TYR DIAMONDFIT WOB- DURAFAST ONE

MSRP: \$64.99

SIZE: XS (0/2), S (4/6), M (8), L (10/12), XL (14/16)



**BDRF7A**  
001 BLACK  
CARRYOVER



**BDRF7A**  
401 NAVY  
CARRYOVER

**DURAFAST ONE FABRIC:** 51% RECYCLED POLY/ 49% POLY

- 300+ HOURS OF PERFORMANCE
- 100% CHLORINE PROOF
- 100% COLORFAST
- UPF 50+ TECHNOLOGY

**WEIGHT:** 170 GSM

**LINER FABRIC:** 100% POLYESTER

**FEATURES:**

- SUPPORTIVE AND FLEXIBLE STRAPS
- SECURE UNDERBRA BAND
- FULLY LINED WITH ANTIMICROBIAL LINING
- MODEST COVERAGE
- ADJUSTABLE DRAWCORD AT WAIST
- EMBROIDERED LOGO

# TYR DIAMONDFIT BIKINI TOP- DURAFAST ONE

MSRP: \$34.99

SIZE: XS (0/2), S (4/6), M (8), L (10/12), XL (14/16)



**BDRT7A**  
001 BLACK  
CARRYOVER



**BDRT7A**  
401 NAVY  
CARRYOVER

**DURAFAST ONE FABRIC:** 51% RECYCLED POLY/ 49% POLY

- 300+ HOURS OF PERFORMANCE
- 100% CHLORINE PROOF
- 100% COLORFAST
- UPF 50+ TECHNOLOGY

**WEIGHT:** 170 GSM

**LINER FABRIC:** 100% POLYESTER

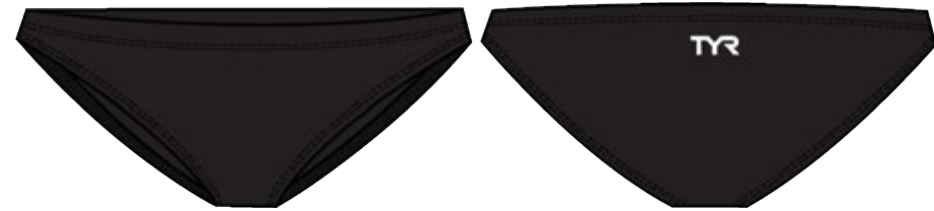
**FEATURES:**

- SUPPORTIVE AND FLEXIBLE STRAPS
- SECURE BOTTOM BAND
- FULLY LINED WITH ANTIMICROBIAL LINING
- EMBROIDERED LOGO

# TYR CLASSIC FULL COVERAGE BIKINI BOTTOM- DURAFAST ONE

MSRP: \$34.99

SIZE: XS (0/2), S (4/6), M (8), L (10/12), XL (14/16)



**BSOD7A**  
001 BLACK  
CARRYOVER



**BSOD7A**  
401 NAVY  
CARRYOVER

**DURAFAST ONE FABRIC:** 51% RECYCLED POLY/ 49% POLY

- 300+ HOURS OF PERFORMANCE
- 100% CHLORINE PROOF
- 100% COLORFAST
- UPF 50+ TECHNOLOGY

**WEIGHT:** 170 GSM

**LINER FABRIC:** 100% POLYESTER

**FEATURES:**

- MODEST COVERAGE
- FULLY LINED WITH ANTIMICROBIAL LINING
- ADJUSTABLE DRAWCORD AT WAIST
- EMBROIDERED LOGO



# TYR JAMMER- DURAFAST ONE

MSRP: \$49.99

SIZE: (A: 26 (XS), 28 (S), 30 (S), 32 (M), 34 (M), 36 (L), 38 (XL)) or (Y: 22-24)



**SDUR7 (A & Y)**  
001 BLACK  
CARRYOVER

**SDUR7 (A & Y)**  
401 NAVY  
CARRYOVER

**DURAFAST ONE FABRIC:** 51% RECYCLED POLY/ 49% POLY

- 300+ HOURS OF PERFORMANCE
- 100% CHLORINE PROOF
- 100% COLORFAST
- UPF 50+ TECHNOLOGY

**WEIGHT:** 170 GSM

**LINER FABRIC:** 100% POLYESTER

**FEATURES:**

- FULLY LINED WITH ANTIMICROBIAL LINING
- CHAMPIONSHIP CUT
- ADJUSTABLE DRAWCORD AT WAIST
- EMBROIDERED LOGO

# TYR<sup>®</sup> MEN'S RESISTANCE SHORT SWIMSUIT

MSRP: \$34.99

SIZE: XS, S, M, L, XL

FABRIC: 100% POLYESTER

LINER FABRIC: 100% POLYESTER

**FEATURES:**

- CREATES DRAG IN THE WATER FOR RESISTANCE TRAINING
- LIGHTWEIGHT
- HEAT SEAL LOGO AT HEM
- INTERIOR DRAWCORD
- SELF FABRIC LINER



**SHS2A**  
001 BLACK  
CARRYOVER



**SHS2A**  
401 NAVY  
CARRYOVER