



*Workbook
Autumn / Winter 2025 / 26*

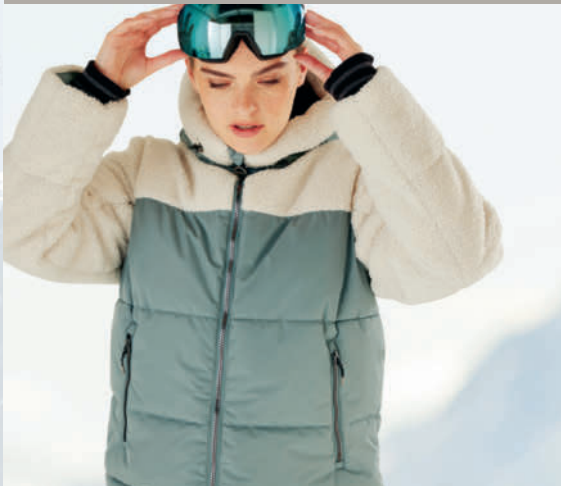
 **killtec**[®]
YOUR RELIABLE PARTNER



EVERYDAY
COLLECTION

OUTDOOR

WOMEN **04** MEN **40**



STYLE
COLLECTION

SKI

WOMEN **20**

PERFORMANCE
COLLECTION

SKI

WOMEN **26** MEN **50**



EVERYDAY COLLECTION

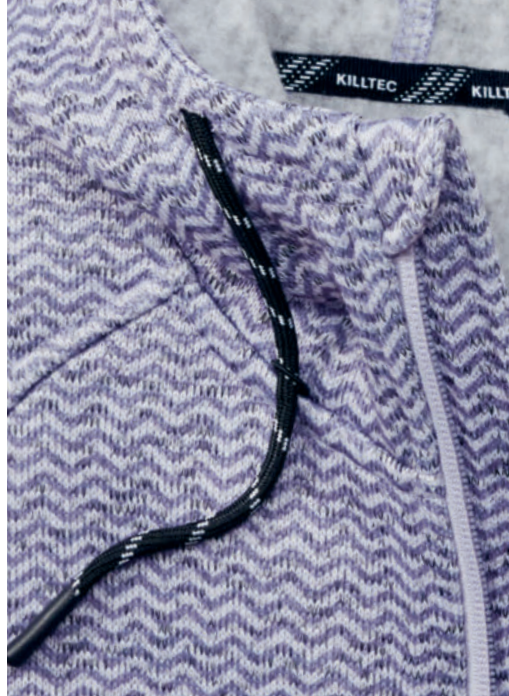
BREEZE THROUGH LIFE WITH OUR EVERYDAY COLLECTION.



1) 43306 KOW 14 WMN QLTD PRK // 2) 41809 KOW 55 WMN QLTD PRK
3) 43295 KOW 5 WMN KNTFLC JCKT // 4) 43292 KOW 2 WMN FLX JCKT



HIGHLIGHTS



41810 KOW 56 WMN QLTD CT

EVERYDAY COLLECTION

BREEZE THROUGH LIFE WITH OUR EVERYDAY COLLECTION.



1



2



3



4

1) 43303 KOW 11 WMN QLTD PRK // 2) 43292 KOW 2 WMN FLX JCKT
3) 43295 KOW 5 WMN KNTFLC JCKT // 4) 43302 KOW 10 WMN QLTD JCKT



HIGHLIGHTS



OUTDOOR

43297 KOW 7 WMN VST SHERPA FLEECE VEST WITH STAND-UP COLLAR

MATERIAL Sherpa fleece, 100% Polyester
SIZE 36-50



43297-00308
white sand



43297-00200
black



43293 KOW 3 WMN FLC JCKT FLEECE JACKET WITH STAND-UP COLLAR

MATERIAL Fleece, 100% Polyester
SIZE 34-50



43293-00738
green-grey

43293-00441
rose dust

43293-00200
black

43293-00448
magenta

43293-00744
light petrol

43296 KOW 6 WMN KNTFLC JCKT FLEECE JACKET WITH STAND-UP COLLAR

MATERIAL Fashion fleece, 100% Polyester
SIZE 36-50



43296-00308
white sand

43296-00830
blue night

43296-00200
black

43296-00445
wine red

EVERYDAY



43292-00115 copper brown
 43292-00166 inca gold
 43292-00741 light sage
 43292-00458 light plum
 43292-00439 plum

43292 KOW 2 WMN FLX JCKT POWERSTRETCH JACKET WITH STAND-UP COLLAR

MATERIAL Powerstretch, 95% Polyester, 5% Elastane
 SIZE 36-54



43292-00824 blue grey
 43292-00830 blue night
 43292-00200 black
 43292-00445 wine red



43295-00741 light sage
 43295-00859 lavender
 43295-00824 blue grey
 43295-00441 rose dust
 43295-00210 grey
 43295-00525 light ice-blue

43295 KOW 5 WMN KNTFLC JCKT KNITFLEECE JACKET WITH HOOD

MATERIAL Knitfleece, 100% Polyester
 SIZE 36-50

OUTDOOR

43294 KOW 4 WMN FLX JCKT POWERSTRETCH JACKET WITH STAND-UP COLLAR

MATERIAL Powerstretch, 95% Polyester, 5% Elastane

SIZE 36-50



43294-00200
black

43294-00744
light petrol

43294-00445
wine red

43300 KOW 8 WMN SFTSHLL JCKT SOFTSHELL JACKET WITH HOOD

MATERIAL Softshell, 92% Polyester, 8% Elastane |
Backside Softshell: Knit Fleece, 100% Polyester

FEATURES breathable TPU lamination, water column
10.000 mm, moisture vapour permeability
3.000 g/m²/24 h, water repellent,
PFAs-free impregnation

SIZE 36-50



43300-00741
light sage

43300-00830
blue night

43300-00890
metal

43300-00439
plum

43300-00434
dark rose

43305 KOW 23 WMN QLTD JCKT FUNCTIONAL JACKET IN DOWN LOOK WITH HOOD

MATERIAL Full Dull Polyester, 100% Polyester (recycled)
Lining: 100% Polyester (recycled)

FEATURES Filling: Polyfill, 100% Polyester (recycled)
TPU lamination, water column 10.000 mm,
windproof, water repellent, PFAs-free impregnation

SIZE 36-50



43305-00274
light taupe

43305-00448
magenta

43305-00738
green-grey

43305-00830
blue night

EVERYDAY



39702-00738 green-grey
39702-00830 blue night
39702-00458 light plum
39702-00523 mallow
39702-00744 light petrol

39702 KOW 37 WMN JCKT FUNCTIONAL JACKET WITH ZIP-OFF HOOD

MATERIAL Full Dull Polyester Melange, 100% Polyester
Lining: 100% Polyester
Filling: 100% Polyester

FEATURES breathable TPU lamination, water column 10.000 mm, moisture vapour permeability 3.000 g/m²/24 h, all seams taped, waterproof, PFAs-free impregnation

SIZE 36 - 54



37411-00274 light taupe
38030-00738 green-grey
37411-00738 green-grey
38030-00814 dark navy
37411-00675 cappuccino
37411-00434 dark rose
38030-00434 dark rose

37411 KOW 140 WMN JCKT FUNCTIONAL JACKET WITH ZIP-OFF HOOD

MATERIAL Full Dull Polyester, 100% Polyester
Lining: 100% Polyester
Filling: 100% Polyester

FEATURES breathable TPU lamination, water column 10.000 mm, moisture vapour permeability 3.000 g/m²/24 h, all seams taped, waterproof, PFAs-free impregnation

SIZE 36 - 54



37411-00744 light petrol
37411-00756 dark olive
37411-00400 red
38030-00400 red
37411-00447 dark wine red
37411-00200 black

38030 KOW 170 WMN JCKT KG FUNCTIONAL JACKET WITH ZIP-OFF HOOD

MATERIAL Full Dull Polyester, 100% Polyester
Lining: 100% Polyester
Filling: 100% Polyester

FEATURES breathable TPU lamination, water column 10.000 mm, moisture vapour permeability 3.000 g/m²/24 h, all seams taped, waterproof, PFAs-free impregnation

SIZE 18 - 25

OUTDOOR

43302 KOW 10 WMN QLTD JCKT FUNCTIONAL JACKET IN DOWN LOOK WITH HOOD

MATERIAL Polyester Structure, 100% Polyester
Lining: 100% Polyester (recycled)
Filling: 100% Polyester (recycled)

FEATURES breathable TPU lamination, water column 10.000 mm, moisture vapour permeability 3.000 g/m²/24 h, water repellent, PFAs-free impregnation

SIZE 36 - 50



43302-00166
inca gold

43302-00308
white sand

43302-00448
magenta

43302-00830
blue night

43302-00859
lavender

43302-00525
light ice-blue

41817 KOW 93 WMN PRK FUNCTIONAL PARKA WITH HOOD

MATERIAL Full Dull Polyester Melange, 100% Polyester
Lining: 100% Polyester
Filling: 100% Polyester (recycled)

FEATURES breathable TPU lamination, water column 10.000 mm, moisture vapour permeability 5.000 g/m²/24 h, all seams taped, waterproof, PFAs-free impregnation

SIZE 36 - 50



41817-00200
black

41817-00824
blue grey

41817-00738
green-grey

43306 KOW 14 WMN QLTD PRK FUNCTIONAL PARKA IN DOWN LOOK WITH HOOD

MATERIAL Full Dull Polyester, 100% Polyester (recycled)
Lining: 100% Polyester (recycled)
Filling: 100% Polyester (recycled)

FEATURES TPU lamination, water column 10.000 mm, windproof, water repellent, PFAs-free impregnation

SIZE 36 - 50



43306-00439
plum

43306-00200
black

43306-00744
light petrol

EVERYDAY



43304-00441
rose dust

43304-00200
black

43304-00824
blue grey

43304 KOW 12 WMN QLTD JCKT FUNCTIONAL JACKET IN DOWN LOOK WITH HOOD

MATERIAL Full Dull Polyester, 100% Polyester
Lining: 100% Polyester
Filling: 100% Polyester (recycled)

FEATURES breathable TPU lamination, water column 10.000 mm, moisture vapour permeability 3.000 g/m²/24 h, water repellent, PFAs-free impregnation

SIZE 36 - 46



41809-00738
green-grey

41809-00441
rose dust

41809-00439
plum

41809-00200
black

41809 KOW 55 WMN QLTD PRK FUNCTIONAL PARKA IN DOWN LOOK WITH HOOD

MATERIAL Full Dull Polyester, 100% Polyester
Lining: 100% Polyester
Filling: 100% Polyester (recycled)

FEATURES breathable TPU lamination, water column 10.000 mm, moisture vapour permeability 3.000 g/m²/24 h, water repellent, PFAs-free impregnation

SIZE 36 - 50



41809-00408
dark red

41809-00890
metal

41809-00824
blue grey

OUTDOOR

43307 KOW 19 WMN PRK FUNCTIONAL PARKA WITH HOOD

MATERIAL Full Dull Polyester, 100% Polyester
Lining: 100% Polyester
Filling: 100% Polyester (recycled)

FEATURES breathable TPU lamination, water column 10.000 mm, moisture vapour permeability 3.000 g/m²/24 h, all seams taped, waterproof, PFAs-free impregnation

SIZE 36 - 50



43307-00738
green-grey

43307-00458
light plum

43307-00269
black blue

43307-00890
metal

43303 KOW 11 WMN QLTD PRK FUNCTIONAL PARKA IN DOWN LOOK WITH HOOD

MATERIAL Polyester Structure, 100% Polyester
Lining: 100% Polyester (recycled)
Filling: 100% Polyester (recycled)

FEATURES breathable TPU lamination, water column 10.000 mm, moisture vapour permeability 3.000 g/m²/24 h, water repellent, PFAs-free impregnation

SIZE 36 - 50



43303-00274
light taupe

43303-00115
copper brown

43303-00434
dark rose

43303-00824
blue grey

43303-00269
black blue

43308 KOW 15 WMN JCKT FUNCTIONAL JACKET WITH ZIP-OFF HOOD

MATERIAL Full Dull Polyester, 92% Polyester, 8% Elastane
Lining: 100% Polyester
Filling: 100% Polyester (recycled)

FEATURES breathable TPU lamination, water column 10.000 mm, moisture vapour permeability 10.000 g/m²/24 h, all seams taped, waterproof, PFAs-free impregnation

SIZE 36 - 50



43308-00308
white sand

43308-00441
rose dust

43308-00525
light ice-blue

EVERYDAY



37726-00200
black

37726-00814
dark navy

37726-00756
dark olive

37726-00274
light taupe



37726-00890
metal

37726-00744
light petrol

37726-00675
cappucino

37726-00738
green-grey



41815-00458
light plum

41815-00824
blue grey

41815-00298
anthracite
melange

41815-00447
dark wine red

37726 KOW 165 WMN PRK FUNCTIONAL PARKA WITH ZIP-OFF HOOD

MATERIAL Full Dull Polyester, 100% Polyester
Lining: 100% Polyester
Filling: 100% Polyester

FEATURES breathable TPU lamination, water column 10.000 mm, moisture vapour permeability 3.000 g/m²/24 h, all seams taped, waterproof, PFAs-free impregnation

SIZE 34 - 54

41815 KOW 303 WMN PRK FUNCTIONAL PARKA WITH ZIP-OFF HOOD

MATERIAL Full Dull Polyester, 100% Polyester
Lining: 100% Polyester
Filling: 100% Polyester (recycled)

FEATURES breathable TPU lamination, water column 10.000 mm, moisture vapour permeability 3.000 g/m²/24 h, all seams taped, waterproof, PFAs-free impregnation

SIZE 36 - 50



OUTDOOR

43311 KOW 189 WMN JCKT 3 IN 1 FUNCTIONAL JACKET WITH HOOD AND ZIP-IN FLEECE JACKET

MATERIAL Outer jacket: Polyester Twill, 100% Polyester |
Inner jacket: 100% Polyester
Lining: Outer jacket: 100% Polyester

FEATURES Outer jacket: breathable TPU lamination, water
column 10.000 mm, moisture vapour permeability
3.000 g/m²/24 h, all seams taped, waterproof,
PFAs-free impregnation

SIZE 36-50



43311-00274
light taupe



43311-00458
light plum



43311-00269
black blue



43313 KOW 18 WMN PRK FUNCTIONAL PARKA WITH ZIP-OFF HOOD

MATERIAL Polyester Twill, 100% Polyester
Lining: 100% Polyester
Filling: 100% Polyester (recycled)

FEATURES breathable TPU lamination,
water column 10.000 mm, moisture vapour
permeability 3.000 g/m²/24 h, all seams taped,
waterproof, PFAs-free impregnation

SIZE 36-50



43313-00744
light petrol

43313-00269
black blue

43313-00756
dark olive

43313-00447
dark wine red



41810-00308
white sand

41810-00200
black

41810-00744
light petrol

41810-00458
light plum

41810-00675
cappucino

41810-00408
dark red

41810 KOW 56 WMN QLTD CT FUNCTIONAL COAT IN DOWN LOOK WITH HOOD

MATERIAL Full Dull Polyester, 100% Polyester
Lining: 100% Polyester
Filling: 100% Polyester (recycled)

FEATURES breathable TPU lamination, water column 10.000 mm, moisture vapour permeability 3.000 g/m²/24 h, water repellent, PFAs-free impregnation

SIZE 36-50



43310-00115
copper brown

43310-00741
light sage

43310-00890
metal

43310-00447
dark wine red

43310 KOW 16 WMN PRK FUNCTIONAL PARKA WITH HOOD

MATERIAL Polyester Ripstop, 100% Polyester
Lining: 100% Polyester
Filling: 100% Polyester (recycled)

FEATURES breathable TPU lamination, water column 10.000 mm, moisture vapour permeability 10.000 g/m²/24 h, all seams taped, waterproof, PFAs-free impregnation

SIZE 36-50



43312-00274
light taupe

43312-00200
black

43312 KOW 22 WMN JCKT 3 IN 1 FUNCTIONAL PARKA WITH HOOD AND ZIP-IN QUILTED JACKET

MATERIAL Outer jacket: Full Dull Polyester, 100% Polyester | Inner jacket: 100% Polyamide
Lining Outer jacket: 100% Polyamide | 100% Polyester | Inner jacket: 100% Polyamide
Filling: 100% Polyester (recycled)

FEATURES Outer jacket: breathable TPU lamination, water column 10.000 mm, moisture vapour permeability 3.000 g/m²/24 h, all seams taped, waterproof, PFAs-free impregnation

SIZE 36-46



OUTDOOR

39847 KOW 34 WMN SFTSHLL PNTS (STRETCH) SOFTSHELL PANTS

MATERIAL Softshell Stretch, 88% Polyester, 12% Elastane |
Backside Softshell Stretch:
Antipilling Microfleece, 100% Polyester

FEATURES breathable TPU lamination, water column
10.000 mm, moisture vapour permeability
10.000 g/m²/24 h, water repellent,
PFAs-free impregnation

SIZE **34 - 50**



39847-00200
black

44208 KOW 34 KG WMN SFTSHLL PNTS (STRETCH) SOFTSHELL PANTS

MATERIAL Softshell Stretch, 88% Polyester, 12% Elastane |
Backside Softshell Stretch:
Antipilling Microfleece, 100% Polyester

FEATURES breathable TPU lamination, water column
10.000 mm, moisture vapour permeability
10.000 g/m²/24 h, water repellent,
PFAs-free impregnation

SIZE **17 - 23**

EVERYDAY

SKI STYLE COLLECTION

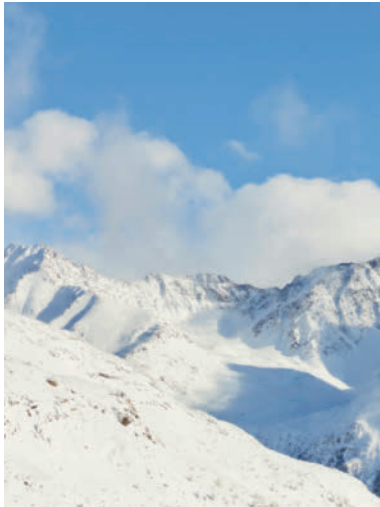
PRACTICAL FEATURES FOR THE SLOPE, COUPLED WITH AN URBAN LOOK.



- 1) 43616 KSW 111 WMN SKI QLTD JCKT // 2) 43611 KSW 110 WMN LS SHRT
3) 43623 KSW 118 WMN SKI QLTD JCKT // 4) 43618 KSW 113 WMN SKI QLTD JCKT



HIGHLIGHTS



SKI

43610 KSW 109 WMN LS SHRT POWERSTRETCH SHIRT WITH STAND-UP COLLAR AND ZIPPER

MATERIAL Carbon Peached Jersey,
80% Polyester, 20% Elastane
SIZE 36-46



43610-00670
toffee

43610-00203
anthracite

43610-00408
dark red

43611 KSW 110 WMN LS SHRT POWERSTRETCH SHIRT WITH STAND-UP COLLAR AND ZIPPER

MATERIAL Carbon Peached Jersey, 80% Polyester,
20% Elastane
SIZE 36-50



43611-00101
broken white

43611-00670
toffee

43611-00200
black

43611-00408
dark red

43613 KSW 108 WMN FLC JCKT HYBRID JACKET WITH HOOD

MATERIAL Brushed Fleece, 100% Polyester (recycled) |
Light Polyester, 100% Polyester (recycled)
Lining: 100% Polyester (recycled)
Filling: 100% Polyester (recycled)
SIZE 36-46



43613-00670
toffee

43613-00525
light ice-blue

43613-00200
black

43616 KSW 111 WMN SKI QLTD JCKT FUNCTIONAL JACKET IN DOWN LOOK WITH HOOD AND ZIP-OFF SNOWCATCHER

MATERIAL Full Dull Pongee, 100% Polyester |
Sherpa, 100% Polyester |
Lining: 100% Polyester (recycled)
Filling: 100% Polyester (recycled)
FEATURES breathable TPU lamination, water column
10.000 mm, moisture vapour permeability
3.000 g/m²/24 h, water repellent,
PFAs-free impregnation,
SIZE 36-46



43616-00315
dark brown

43616-00200
black

43616-00224
sea gray



43618-00314
nomad

43618-00525
light ice-blue

43618-00101
broken white

43618-00200
black

43618 KSW 113 WMN SKI QLTD JCKT FUNCTIONAL JACKET IN DOWN LOOK WITH HOOD AND ZIP-OFF SNOWCATCHER

MATERIAL Full Dull Pongee, 100% Polyester | Metallic Nylon, 100% Polyamide
Lining: 100% Polyester (recycled)
Filling: 100% Polyester (recycled)

FEATURES breathable TPU lamination, water column 10.000 mm, moisture vapour permeability 3.000 g/m²/24 h, water repellent, PFAs-free impregnation,

SIZE 36-46



43620-00200
black

43620-00408
dark red

43620 KSW 115 WMN SKI QLTD JCKT FUNCTIONAL JACKET IN DOWN LOOK WITH HOOD AND SNOWCATCHER

MATERIAL Full Dull Pongee, 100% Polyester | Polyester Stretch, 92% Polyester, 8% Elastane
Lining: 100% Polyester (recycled)
Filling: 100% Polyester (recycled)

FEATURES breathable TPU lamination, water column 10.000 mm, moisture vapour permeability 3.000 g/m²/24 h, water repellent, PFAs-free impregnation,

SIZE 36-50



43623-00315
dark brown

43623-00224
sea gray

43623 KSW 118 WMN SKI QLTD JCKT FUNCTIONAL JACKET IN DOWN LOOK WITH HOOD AND SNOWCATCHER

MATERIAL Full Dull Pongee, 100% Polyester | Polyester Stretch, 92% Polyester, 8% Elastane
Lining: 100% Polyester (recycled)
Filling: 100% Polyester (recycled)

FEATURES breathable TPU lamination, water column 10.000 mm, moisture vapour permeability 3.000 g/m²/24 h, water repellent, PFAs-free impregnation

SIZE 38-50



43617-00670
toffee

43617-00224
sea gray

43617-00200
black

43617 KSW 112 WMN SKI QLTD JCKT FUNCTIONAL JACKET IN DOWN LOOK WITH ZIP-OFF HOOD AND SNOWCATCHER

MATERIAL Full Dull Pongee, 100% Polyester | Sherpa, 100% Polyester
Lining: 100% Polyester (recycled)
Filling: 100% Polyester (recycled)

FEATURES breathable TPU lamination, water column 10.000 mm, moisture vapour permeability 3.000 g/m²/24 h, water repellent, PFAs-free impregnation,

SIZE 36-46



43621 KSW 116 WMN SKI JCKT FUNCTIONAL JACKET WITH ZIP-OFF HOOD AND SNOWCATCHER

MATERIAL Stretch Polyester, 92% Polyester, 8% Elastane
Lining: 100% Polyester
Filling: 100% Polyester (recycled)

FEATURES breathable TPU lamination, water column 10.000 mm, moisture vapour permeability 3.000 g/m²/24 h, all seams taped, waterproof, PFAs-free impregnation

SIZE 36 - 46



43621-00670
toffee

43621-00200
black

43621-00408
dark red

43622 KSW 117 WMN SKI JCKT FUNCTIONAL JACKET WITH ZIP-OFF HOOD AND SNOWCATCHER

MATERIAL Stretch Polyester, 92% Polyester, 8% Elastane
Lining: 100% Polyester (recycled)
Filling: 100% Polyester (recycled)

FEATURES breathable TPU lamination, water column 10.000 mm, moisture vapour permeability 3.000 g/m²/24 h, all seams taped, waterproof, PFAs-free impregnation

SIZE 36 - 46



43622-00315
dark brown

43622-00224
sea gray

43622-00101
broken white



42403-00200
black



42403-00315
dark brown



42403 KSW 311 WMN SKI PNTS FUNCTIONAL PANTS WITH SNOWCATCHER

MATERIAL 4-Way Stretch, 92% Polyester, 8% Elastane
Lining: 100% Polyester
Filling: 100% Polyester (recycled)

FEATURES breathable TPU lamination, water column 10.000 mm, moisture vapour permeability 3.000 g/m²/24 h, all seams taped, water proof, PFAs-free impregnation

SIZE 36 - 50



43627-00314
nomad



43627-00224
sea gray



43627-00101
broken white



43627-00200
black



43627 KSW 119 WMN SKI SFTSHLL PNTS SOFTSHELL PANTS WITH SNOWCATCHER

MATERIAL Softshell Stretch, 88% Polyamide, 12% Elastane | Backside Softshell Stretch: Super soft velvet, 95% Polyester, 5% Elastane
Lining: 100% Polyester

FEATURES breathable TPU lamination, water column 10.000 mm, moisture vapour permeability 3.000 g/m²/24 h, water repellent, PFAs-free impregnation

SIZE 36 - 46

PERFORMANCE COLLECTION

PERFORMANCE COLLECTION - FOR TECHNICAL FINESSE AND FUNCTIONALLY RELIABLE PRODUCTS.



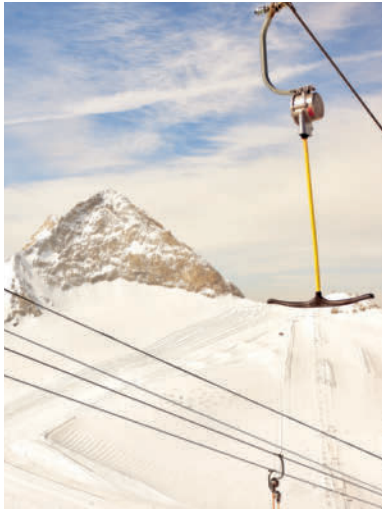
- 1) 43428 KSW 249 WMN SKI PNTS_ERIELLE // 2) 43412 KSW 26 WMN SKI JCKT
3) 43458 KSW 56 WMN FLX SHRT // 4) 43411 KSW 25 WMN SKI JCKT



FEATURES



43417 KSW 31 WMN SKI QLTD JCKT



PERFORMANCE COLLECTION

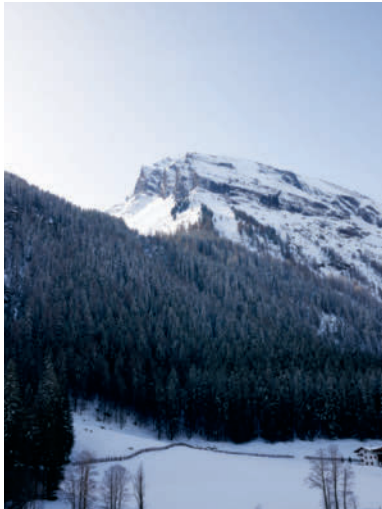
PERFORMANCE COLLECTION - FOR TECHNICAL FINESSE AND FUNCTIONALLY RELIABLE PRODUCTS.



- 1) 43418 KSW 33 WMN SKI JCKT // 2) 43464 KSW 70 WMN FLX SHRT
3) 43428 KSW 249 WMN SKI PNTS_ERIELLE // 4) 43416 KSW 30 WMN SKI JCKT
5) 43420 KSW 39 WMN SKI JCKT



HIGHLIGHTS



43419 KSW 35 WMN SKI JCKT

SKI

43495 KSW 121 WMN FLX SHRT FUNCTIONAL SHIRT WITH STAND-UP COLLAR AND ZIPPER

MATERIAL Melange Jersey, 100% Polyester

SIZE 36-50



43495-00741
light sage

43495-00830
blue night

43495-00864
violet

43495-00211
grey melange

40880 KSW 101 WMN FLC SHRT FLEECE SHIRT WITH STAND-UP COLLAR AND ZIPPER

MATERIAL Antipilling Microfleece, 100% Polyester

SIZE 36-54



40880-00270
black blue
until 54

40880-00738
green-grey
until 54

40880-00401
rose wood

40880-00444
light pink

40880-00439
plum



40880-00744
light petrol

40880-00525
light ice-blue
until 54

40880-00642
bright coral

40880-00920
black

40880-00101
broken white

PERFORMANCE



43464-00269
black blue

43464-00738
green-grey

43464-00830
blue night

43464-00744
light petrol



43464-00642
bright coral

43464-00274
light taupe

43464-00200
black

43464-00101
broken white



43458-00741
light sage

43458-00839
powder blue

43458-00864
violet

43458-00525
light ice-blue

43464 KSW 70 WMN FLX SHRT FUNCTIONAL SHIRT WITH STAND-UP COLLAR AND ZIPPER

MATERIAL Carbon Peached Jersey, 69% Polyester,
31% Elastane

SIZE 36-50

43458 KSW 56 WMN FLX SHRT FUNCTIONAL SHIRT WITH STAND-UP COLLAR AND ZIPPER

MATERIAL Carbon Peached Jersey, 69% Polyester,
31% Elastane

SIZE 36-50

43417 KSW 31 WMN SKI QLTD JCKT FUNCTIONAL JACKET IN DOWN LOOK WITH HOOD AND SNOWCATCHER

MATERIAL Full Dull Polyester, 100% Polyester
Lining: 100% Polyester
Filling: 100% Polyester (recycled)

FEATURES breathable TPU lamination, water column 10.000 mm, moisture vapour permeability 3.000 g/m²/24 h, water-repellent, PFAs-free impregnation

SIZE 36-50



43417-00401 rose wood
43417-00839 powder blue
43417-00525 light ice-blue
43417-00444 light pink
43417-00269 black blue
43417-00101 broken white

43411 KSW 25 WMN SKI JCKT FUNCTIONAL JACKET WITH ZIP-OFF HOOD AND SNOWCATCHER

MATERIAL Full Dull Polyester Stretch, 100% Polyester
Lining: 100% Polyester
Filling: 100% Polyester (recycled)

FEATURES breathable TPU lamination, water column 10.000 mm, moisture vapour permeability 3.000 g/m²/24 h, all seams taped, waterproof, PFAs-free impregnation

SIZE 36-50



43411-00738 green-grey
43411-00439 plum
43411-00864 violet
43411-00642 bright coral
43411-00200 black

43412 KSW 26 WMN SKI JCKT FUNCTIONAL JACKET WITH ZIP-OFF HOOD AND SNOWCATCHER

MATERIAL Full Dull Polyester Stretch, 100% Polyester
Lining: 100% Polyester
Filling: 100% Polyester (recycled)

FEATURES breathable TPU lamination, water column 10.000 mm, moisture vapour permeability 3.000 g/m²/24 h, all seams taped, waterproof, PFAs-free impregnation

SIZE 36-54



43412-00741 light sage until 54
43412-00444 light pink
43412-00525 light ice-blue until 54
43412-00642 bright coral until 54

43414 KSW 28 WMN SKI JCKT FUNCTIONAL JACKET WITH ZIP-OFF HOOD AND SNOWCATCHER

MATERIAL Full Dull Polyester Stretch, 100% Polyester
Lining: 100% Polyester
Filling: 100% Polyester (recycled)

FEATURES breathable TPU lamination, water column 10.000 mm, moisture vapour permeability 3.000 g/m²/24 h, all seams taped, waterproof, PFAs-free impregnation

SIZE 36-46



43414-00439 plum
43414-00269 black blue

PERFORMANCE



43427-00200
black



43427 KSW 98 WMN SKI JCKT FUNCTIONAL JACKET WITH ZIP-OFF HOOD AND SNOWCATCHER

MATERIAL Full Dull Polyester Stretch, 100% Polyester | Full Dull Melange Twill, 100% Polyester
Lining: 100% Polyester
Filling: 100% Polyester (recycled)

FEATURES breathable TPU lamination, water column 10.000 mm, moisture vapour permeability 3.000 g/m²/24 h, all seams taped, waterproof, PFAs-free impregnation

SIZE 36-46



43416-00401
rose wood

43416-00439
plum

43416-00744
light petrol

43416-00101
broken white

43416 KSW 30 WMN SKI JCKT FUNCTIONAL JACKET WITH ZIP-OFF HOOD AND SNOWCATCHER

MATERIAL Full Dull Polyester Stretch, 100% Polyester
Lining: 100% Polyester
Filling: 100% Polyester (recycled)

FEATURES breathable TPU lamination, water column 10.000 mm, moisture vapour permeability 3.000 g/m²/24 h, water repellent, PFAs-free impregnation

SIZE 36-46



43418-00744
light petrol

43418-00101
broken white

43418-00200
black

43418 KSW 33 WMN SKI JCKT FUNCTIONAL JACKET WITH HOOD AND SNOWCATCHER

MATERIAL Full Dull Polyester Stretch, 100% Polyester
Lining: 100% Polyester
Filling: 100% Polyester (recycled)

FEATURES breathable TPU lamination, water column 10.000 mm, moisture vapour permeability 3.000 g/m²/24 h, all seams taped, waterproof, PFAs-free impregnation

SIZE 36-46



43419-00738
green-grey

43419-00401
rose wood

43419-00269
black blue

43419-00274
light taupe

43419 KSW 35 WMN SKI JCKT FUNCTIONAL JACKET WITH ZIP-OFF HOOD AND SNOWCATCHER

MATERIAL Polyester Ripstop, 100% Polyester
Lining: 100% Polyester
Filling: 100% Polyester (recycled)

FEATURES breathable TPU lamination, water column 10.000 mm, moisture vapour permeability 5.000 g/m²/24 h, all seams taped, waterproof, PFAs-free impregnation

SIZE 36-46



SKI

43420 KSW 39 WMN SKI JCKT FUNCTIONAL JACKET WITH ZIP-OFF HOOD, SNOWCATCHER AND UNDERARM VENTILATION

MATERIAL Polyester Jaquard, 100% Polyester |
Full Dull Polyester Stretch, 100% Polyester |
Polyester Ripstop, 100% Polyester
Lining: 100% Polyester
Filling: 100% Polyester (recycled)

FEATURES breathable TPU lamination, water column
10.000 mm, moisture vapour permeability
5.000 g/m²/24 h, all seams taped, waterproof,
PFAs-free impregnation

SIZE 36 - 46



43420-00741
light sage

43420-00744
light petrol

43420-00200
black

43421 KSW 42 WMN SKI JCKT FUNCTIONAL JACKET WITH ZIP-OFF HOOD, SNOWCATCHER AND UNDERARM VENTILATION

MATERIAL Dermizax 4-Way Polyamide Stretch,
84% Polyamide, 16% Elastane
Lining: 100% Polyester
Filling: 100% Polyester (recycled)

FEATURES breathable PU lamination, water column
20.000 mm, moisture vapour permeability
10.000 g/m²/24 h, all seams taped, waterproof

SIZE 36 - 46



43421-00830
blue night

43421-00642
bright coral

43422 KSW 43 WMN SKI JCKT FUNCTIONAL JACKET WITH ZIP-OFF HOOD, SNOWCATCHER AND UNDERARM VENTILATION

MATERIAL Dermizax 4-Way Polyamide Stretch,
84% Polyamide, 16% Elastane
Lining: 100% Polyester
Filling: 100% Polyester (recycled)

FEATURES breathable PU lamination, water column
20.000 mm, moisture vapour permeability
10.000 g/m²/24 h, all seams taped, waterproof

SIZE 36 - 46



43422-00839
powder blue

43422-00642
bright coral

PERFORMANCE



36410-00200
36411-00200
black



36410-00100
white



36410 THÔNES WMN SKI SFTSHLL PNTS A SOFTSHELL PANTS WITH SNOWCATCHER

MATERIAL Softshell, 94% Polyester, 6% Elastane | Backside
Softshell: Antipilling Microfleece, 100% Polyester

FEATURES breathable PU lamination, water column
10.000 mm, moisture vapour permeability
3.000 g/m²/24 h, water repellent,
PFAs-free impregnation

SIZE 34 – 50

36411 THÔNES WMN SKI SFT PNTS KG SOFTSHELL PANTS WITH SNOWCATCHER

MATERIAL Softshell, 94% Polyester, 6% Elastane | Backside
Softshell: Antipilling Microfleece, 100% Polyester

FEATURES breathable PU lamination, water column
10.000 mm, moisture vapour permeability
3.000 g/m²/24 h, water repellent,
PFAs-free impregnation

SIZE 17 – 25



36414-00200
black



36414 THÔNES WMN SKI SFTSHLL PNTS C SOFTSHELL PANTS WITH EDGE PROTECTION, SNOWCATCHER AND DETACHABLE STRAPS

MATERIAL Softshell, 94% Polyester, 6% Elastane | Backside
Softshell: Antipilling Microfleece, 100% Polyester

FEATURES breathable PU lamination, water column
10.000 mm, moisture vapour permeability
3.000 g/m²/24 h, water repellent,
PFAs-free impregnation

SIZE 34 – 50

43428 KSW 249 WMN SKI PNTS_ERIELLE FUNCTIONAL PANTS WITH DETACHABLE STRAPS, EDGE PROTECTION AND SNOWCATCHER

MATERIAL Full Dull Polyester Stretch, 100% Polyester
Lining: 100% Polyester
Filling: 100 Polyester (recycled)

FEATURES breathable TPU lamination, water column
10.000 mm, moisture vapour permeability
3.000 g/m²/24 h, all seams taped, waterproof,
PFAs-free impregnation

SIZE 36 - 54



43428-00269 black blue until 54
43428-00738 green-grey
43428-00444 light pink
43428-00839 powder blue
43428-00525 light ice-blue

43665 KSW 249 KG WMN SKI PNTS_ERIELLE FUNCTIONAL PANTS WITH DETACHABLE STRAPS, EDGE PROTECTION, SNOWCATCHER AND LEG VENTILATION

MATERIAL Full Dull Polyester Stretch, 100% Polyester
Lining: 100% Polyester
Filling: 100 Polyester (recycled)

FEATURES breathable TPU lamination, water column
10.000 mm, moisture vapour permeability
3.000 g/m²/24 h, all seams taped, waterproof,
PFAs-free impregnation

SIZE 17 - 25



43428-00401 rosewood
43428-00642 bright coral until 54
43428-00274 light taupe
43428-00200
43665-00200
43821-00200
black until 54
43428-00101 broken white

43821 KSW 249 LG WMN SKI PNTS_ERIELLE FUNCTIONAL PANTS WITH DETACHABLE STRAPS, EDGE PROTECTION, SNOWCATCHER AND LEG VENTILATION

MATERIAL Full Dull Polyester Stretch, 100% Polyester
Lining: 100% Polyester
Filling: 100 Polyester (recycled)

FEATURES breathable TPU lamination, water column
10.000 mm, moisture vapour permeability
3.000 g/m²/24 h, all seams taped, waterproof,
PFAs-free impregnation

SIZE 72 - 100



PERFORMANCE



43424-00200
black



43424-00401
rose wood



43424-00525
light ice-blue



43424 KSW 60 WMN SKI PNTS FUNCTIONAL PANTS WITH DETACHABLE STRAPS, EDGE PROTECTION, SNOWCATCHER AND LEG VENTILATION

MATERIAL Full Dull Polyester Stretch, 100% Polyester | Polyester Ripstop, 100% Polyester
Lining: 100% Polyester
Filling: 100% Polyester (recycled)

FEATURES breathable TPU lamination, water column 10.000 mm, moisture vapour permeability 5.000 g/m²/24 h, all seams taped, waterproof, PFAs-free impregnation

SIZE 36 - 46



43425-00830
blue night



43425-00839
powder blue



43425-00642
bright coral



43425 KSW 61 WMN SKI PNTS FUNCTIONAL PANTS WITH DETACHABLE STRAPS, EDGE PROTECTION, SNOWCATCHER AND LEG VENTILATION

MATERIAL Dermizax 4-Way Polyamide Stretch, 84% Polyamide, 16% Elastane
Lining: 100% Polyester
Filling: 100% Polyester (recycled)

FEATURES breathable PU lamination, water column 20.000 mm, moisture vapour permeability 10.000 g/m²/24 h, all seams taped, waterproof

SIZE 36 - 46



PETITE SIZES WOMEN

For petite size clothes cuts are adjusted in length and proportion so that they fit perfectly. For pants, the waist height is shortened, the leg width is reduced and the knee position is set higher up respectively.

Jackets are tailored with a shortened sleeve length and a shortened torso part.

The usual regular women's sizes are 36-50. The value of the petite size is obtained by halving the regular size (18-25).

38030 KOW 170 WMN JCKT KG FUNCTIONAL JACKET WITH ZIP-OFF HOOD

MATERIAL Full Dull Polyester, 100% Polyester
Lining: 100% Polyester
Filling: 100% Polyester

FEATURES breathable TPU lamination, water column 10.000 mm, moisture vapour permeability 3.000 g/m²/24 h, all seams taped, waterproof, PFAs-free impregnation

SIZE 18 - 25



38030-00738
green-grey

38030-00814
dark navy

38030-00434
dark rose

38030-00400
red

44208 KOW 34 KG WMN SFTSHLL PNTS SOFTSHELL PANTS

MATERIAL Softshell Stretch, 88% Polyester, 12% Elastane | Backside Softshell Stretch: Antipilling Microfleece, 100% Polyester

FEATURES breathable TPU lamination, water column 10.000 mm, moisture vapour permeability 10.000 g/m²/24 h, water repellent, PFAs-free impregnation

SIZE 17 - 23



44208-00200
black





36411-00200
black



**36411 THÔNES WMN SKI SFT PNTS KG
SOFTSHELL PANTS WITH SNOWCATCHER**

MATERIAL Softshell, 94% Polyester, 6% Elastane | Backside
Softshell: Antipilling Microfleece, 100% Polyester
FEATURES breathable PU lamination, water column
10.000 mm, moisture vapour permeability
3.000 g/m²/24 h, water repellent,
PFAs-free impregnation
SIZE 17 – 25



43665-00200
black



**43665 KSW 249 KG WMN SKI PNTS_ ERIELLE
FUNCTIONAL PANTS WITH DETACHABLE STRAPS,
EDGE PROTECTION, SNOWCATCHER AND
LEG VENTILATION**

MATERIAL Full Dull Polyester Stretch, 93% Polyester,
7% Elastane
Lining: 100% Polyester
Filling: 100 Polyester (recycled)
FEATURES breathable TPU lamination, water column
10.000 mm, moisture vapour permeability
3.000 g/m²/24 h, all seams taped, waterproof,
PFAs-free impregnation
SIZE 17 – 25



EVERYDAY COLLECTION

BREEZE THROUGH LIFE WITH OUR EVERYDAY COLLECTION.



1) 37589 KOW 161 MN JCKT // 2) 43492 KOW 95 MN JCKT



HIGHLIGHTS



3 IN 1 JACKET



43492 KOW 95 MN JCKT



with zip-in quilted jacket

EVERYDAY COLLECTION

BREEZE THROUGH LIFE WITH OUR EVERYDAY COLLECTION.



1



1) 43321 KOW 87 MN QLTD JCKT



HIGHLIGHTS



43331 KOW 85 MN PRK



OUTDOOR

43456 KOW 76 MN VST SHERPA FLEECE VEST

MATERIAL Sherpa Fleece, 100% Polyester
SIZE S - XXL



43456-00233
dark steel

43456-00271
taupe

43456-00717
olive

43322 KOW 65 MN FLC JCKT FLEECE JACKET WITH STAND-UP COLLAR

MATERIAL Fleece, 100% Polyester
SIZE S - 4XL



43322-00313
cognac

43322-00269
black blue

43322-00200
black

43322-00756
dark olive

43317 KOW 75 MN FLC JCKT FLEECE JACKET WITH STAND-UP COLLAR

MATERIAL Fleece, 100% Polyester
SIZE S - 6XL



43317-00115
copper brown

43317-00322
mahagoni

43317-00811
dark blue

43317-00712
moss

43317-00233
dark steel

43455 KOW 105 MN FLC JCKT SHERPA FLEECE JACKET WITH STAND-UP COLLAR

MATERIAL Sherpa Fleece, 100% Polyester
SIZE S - XXL



43455-00269
black blue

43455-00685
ebony

43455-00271
taupe

EVERYDAY



43333-00811
dark blue

43333-00756
dark olive

43333-00541
dark orange

43333-00233
dark steel

43333 KOW 80 MN FLX JCKT POWERSTRETCH JACKET WITH STAND-UP COLLAR

MATERIAL Powerstretchmelange, 100% Polyester
SIZE S - 4XL



43314-00749
green anthracite

43314-00269
black blue

43314-00811
dark blue

43314 KOW 73 MN FLC JCKT KNIT FLEECE JACKET WITH STAND-UP COLLAR

MATERIAL Bonded Knit Fleece, 100% Polyester |
Backside Bonded Knit Fleece:
Fleece 100% Polyester
SIZE S - 4XL



41843-00814
dark navy

41843-00811
dark blue

41843-00685
ebony

41843-00250
dark moss

41843-00238
dark anthracite

41843 KOW 4 MN JCKT FUNCTIONAL JACKET WITH ZIP-OFF HOOD

MATERIAL Full Dull Polyester, 100% Polyester
Lining: 100% Polyester
Filling: 100% Polyester (recycled)
EIGENSCHAFTEN breathable TPU lamination, water column
10.000 mm, moisture vapour permeability
3.000 g/m²/24 h, all seams taped, waterproof,
PFAs-free impregnation
GRÖSSE S - 6XL



43323-00269
black blue

43323-00322
mahagoni

43323-00200
black

43323-00811
dark blue

43323-00717
olive

43323-00756
dark olive

43323 KOW 79 MN SFTSHLL JCKT SOFTSHELL JACKET WITH ZIP-OFF HOOD

MATERIAL Softshell, 92% Polyester, 8% Elasthane |
Backside Softshell: Fleece, 100% Polyester
FEATURES breathable TPU lamination, water column
10.000 mm, moisture vapour permeability
3.000 g/m²/24 h, water repellent,
PFAs-free impregnation
SIZE S - 4XL

OUTDOOR

41834 KOW 60 MN QLTD JCKT JACKET IN DOWN LOOK WITH HOOD

MATERIAL Full Dull Polyester, 100% Polyester
Lining: 100% Polyester
Filling: 100% Polyester (recycled)

FEATURES breathable TPU lamination, water column 10.000 mm, windproof, water repellent, PFAs-free impregnation

SIZE S - 4XL



41834-00811 dark blue
41834-00407 brick red
41834-00200 black
41834-00249 light moss
41834-00756 dark olive

43321 KOW 87 MN QLTD JCKT JACKET IN DOWN LOOK WITH ZIP-OFF HOOD

MATERIAL Polyester Structure, 100% Polyester | Full Dull Polyester, 100% Polyester
Lining: 100% Polyester
Filling: 100% Polyester (recycled)

FEATURES breathable TPU lamination, water column 10.000 mm, moisture vapour permeability 3.000 g/m²/24 h, water repellent, PFAs-free impregnation

SIZE S - 4XL



43321-00322 mahagoni
43321-00811 dark blue
43321-00269 black blue
43321-00749 green anthracite

37589 KOW 161 MN JCKT FUNCTIONAL JACKET WITH ZIP-OFF HOOD

MATERIAL Full Dull Ripstop, 100% Polyester
Lining: 100% Polyester
Filling: 100% Polyester

FEATURES breathable TPU lamination, water column 10.000 mm, moisture vapour permeability 3.000 g/m²/24 h, all seams taped, waterproof, PFAs-free impregnation

SIZE S - 6XL



37589-00339 dark navy
37589-00836 dark petrol
37589-00271 taupe
37589-00605 burned orange

43055 KOW 161 MN JCKT KG FUNCTIONAL JACKET WITH ZIP-OFF HOOD

MATERIAL Full Dull Ripstop, 100% Polyester
Lining: 100% Polyester
Filling: 100% Polyester

FEATURES breathable TPU lamination, water column 10.000 mm, moisture vapour permeability 3.000 g/m²/24 h, all seams taped, waterproof, PFAs-free impregnation

SIZE 24 - 30



37589-00200 black
43055-00200 black
37589-00756 dark olive
43055-00233 dark steel
37589-00233 dark steel

EVERYDAY



43492-00685
ebony



43492-00200
black



43492-00756
dark olive



43492-00811
dark blue



43492-00717
olive



43489-00115 copper brown 43489-00811 dark blue 43489-00233 dark steel 43489-00756 dark olive 43489-00712 moss

43492 KOW 95 MN JCKT 3 IN 1 FUNCTIONAL JACKET WITH HOOD AND ZIP-IN QUILTED JACKET

MATERIAL Outer jacket: Full Dull Polyester, 100% Polyester | Inner jacket: Woven Polyamide, 100% Polyamide | Lining outer jacket: 100% Polyester | Filling: 100% Polyester (recycled)

FEATURES Outer jacket: breathable TPU lamination, water column 10.000 mm, moisture vapour permeability 3.000 g/m²/24 h, all seams taped, waterproof, PFAs-free impregnation

SIZE S - 4XL



43489 KOW 88 MN QLTD JCKT JACKET IN DOWN LOOK WITH HOOD

MATERIAL Full Dull Polyester, 100% Polyester Structure polyester, 100% Polyester | Lining: 100% Polyester | Filling: 100% Polyester (recycled)

FEATURES breathable TPU lamination, water column 10.000 mm, moisture vapour permeability 3.000 g/m²/24 h, water repellent, PFAs-free impregnation

SIZE S - 4XL



OUTDOOR

43328 KOW 81 MN JCKT FUNCTIONAL JACKET WITH HOOD

MATERIAL Full Dull Polyester, 92% Polyester, 8% Elasthane
Lining: 100% Polyester

FEATURES breathable PU lamination, water column 10.000 mm, moisture vapour permeability 10.000 g/m²/24 h, all seams taped, waterproof, PFAs-free impregnation

SIZE S - 4XL



43328-00200
black

43328-00811
dark blue

43328-00712
moss

43325 KOW 89 MN JCKT FUNCTIONAL JACKET WITH ZIP-OFF HOOD

MATERIAL Dull Polyester, 100% Polyester Structure
polyester, 100% Polyester
Lining: 100% Polyester
Filling: 100% Polyester (recycled)

FEATURES breathable TPU lamination, water column 10.000 mm, moisture vapour permeability 10.000 g/m²/24 h, all seams taped, waterproof, PFAs-free impregnation

SIZE S - 4XL



43325-00685
ebony

43325-00717
olive

43325-00233
dark steel

43331 KOW 85 MN PRK FUNCTIONAL PARKA WITH ZIP-OFF HOOD

MATERIAL Full Dull Polyester, 100% Polyester
Lining: 100% Polyester
Filling: 100% Polyester (recycled)

FEATURES breathable TPU lamination, water column 10.000 mm, moisture vapour permeability 3.000 g/m²/24 h, all seams taped, waterproof, PFAs-free impregnation

SIZE S - 4XL



43331-00269
black blue

43331-00271
taupe

43331-00313
cognac

43331-00717
olive

EVERYDAY



41848-00717
olive

41848-00250
dark moss

41848-00200
black

41848 KOW 80 MN PRK FUNCTIONAL PARKA WITH ZIP-OFF HOOD

MATERIAL Full Dull Polyester, 100% Polyester
Lining: 100% Polyester
Filling: 100% Polyester (recycled)

FEATURES breathable TPU lamination, water column 10.000 mm, moisture vapour permeability 3.000 g/m²/24 h, all seams taped, waterproof, PFAs-free impregnation

SIZE S - XXL



43332-00716
mud

43332-00233
dark steel

43332 KOW 94 MN PRK 3 IN 1 FUNCTIONAL PARKA WITH HOOD AND ZIP-IN QUILTED JACKET

MATERIAL Outer jacket: Full Dull Polyester, 100% Polyester | Inner jacket: Ripstop Taffeta, 100% Polyamide | Lining outer jacket: 100% Polyester | Inner jacket: 100% Polyamide
Filling: 100% Polyester (recycled)

FEATURES Outer jacket: breathable TPU lamination, water column 10.000 mm, moisture vapour permeability 3.000 g/m²/24 h, all seams taped, waterproof, PFAs-free impregnation

SIZE S - XXL



39849-00200
44207-00200
black



39849 KOW 49 MN SFTSHLL PNTS (STRETCH) SOFTSHELL PANTS

MATERIAL Softshell Stretch, 88% Polyester, 12% Elastane | Backside Softshell Stretch:

FEATURES Antipilling Microfleece, 100% Polyester
breathable TPU lamination, water column 10.000 mm, moisture vapour permeability 10.000 g/m²/24 h, water repellent

SIZE 46 - 60

44207 KOW 49 KG MN SFTSHLL PNTS (STRETCH) SOFTSHELL PANTS

MATERIAL Softshell Stretch, 88% Polyester, 12% Elastane | Backside Softshell Stretch:

FEATURES Antipilling Microfleece, 100% Polyester
breathable TPU lamination, water column 10.000 mm, moisture vapour permeability 10.000 g/m²/24 h, water repellent

SIZE 24 - 30

PERFORMANCE COLLECTION

PERFORMANCE COLLECTION - FOR TECHNICAL FINESSE AND
FUNCTIONALLY RELIABLE PRODUCTS.

Dermizax

20.000^{MM}
WATER COLUMN



10.000^{MM}
WATER COLUMN

1) 43441 KSW 50 MN SKI JCKT // 2) 43443 KSW 82 MN SKI PNTS // 3) 40878 KSW 99 MN FLC SHRT
4) 43430 KSW 32 MN SKI JCKT



HIGHLIGHTS



43436 KSW 47 MN SKI JCKT

PERFORMANCE COLLECTION

PERFORMANCE COLLECTION - FOR TECHNICAL FINESSE AND
FUNCTIONALLY RELIABLE PRODUCTS.



1) 43431 KSW 100 ENOSH MN SKI PNTS // 2) 43439 KSW 55 MN SKI JCKT
3) 43435 KSW 72 MN SKI JCKT

HIGHLIGHTS



43441 KSW 50 MN SKI JCKT

40878 KSW 99 MN FLC SHRT
FLEECE SHIRT WITH STAND-UP COLLAR
AND ZIPPER

MATERIAL Antipilling Microfleece, 100% Polyester
 SIZE S - 6XL



40878-00920 black until 6XL
 40878-00270 black blue
 40878-00237 steel
 40878-00541 dark orange



40878-00811 dark blue until 6XL
 40878-00756 dark olive
 40878-00724 spring green
 40878-00260 light cement

43465 KSW 71 MN FLX SHRT
FUNCTIONAL SHIRT WITH STAND-UP COLLAR
AND ZIPPER

MATERIAL Carbon Peached Jersey, 69% Polyester, 31% Elastane
 SIZE S - 4XL



43465-00200 black
 43465-00269 black blue
 43465-00224 sea gray
 43465-00541 dark orange
 43465-00830 blue night



43465-00902 sky
 43465-00771 pistachio
 43465-00860 dark steelblue
 43465-00715 pale olive

PERFORMANCE



43461-00238
dark anthracite

43461-00902
sky

43461 KSW 59 MN FLX SHRT FUNCTIONAL SHIRT WITH STAND-UP COLLAR AND ZIPPER

MATERIAL Carbon Peached Jersey, 69% Polyester,
31% Elastane

SIZE S - 4XL



43460-00200
black

43460-00811
dark blue

43460-00702
forest green

43460 KSW 58 MN FLX SHRT FUNCTIONAL SHIRT WITH STAND-UP COLLAR AND ZIPPER

MATERIAL Carbon Peached Jersey, 69% Polyester,
31% Elastane

SIZE S - 4XL



43822-00838
neon blue

43822-00225
mid grey

43822-00823
smoke blue

43822-00733
olive

43822 KSW 252 MN QLTD JCKT JACKET IN DOWN LOOK WITH HOOD AND SNOWCATCHER

MATERIAL Full Dull Polyester, 100% Polyester

FEATURES breathable TPU lamination,
water column 10.000 mm, moisture vapour
permeability 3.000 g/m²/24 h,
water repellent, PFAs-free impregnation

SIZE S-XXL



43429-00237
steel

43429-00541
dark orange

43429-00902
sky

43429-00702
forest green

43429-00269
black blue

43429 KSW 24 MN SKI JCKT FUNCTIONAL JACKET WITH ZIP-OFF HOOD AND SNOWCATCHER

MATERIAL Full Dull Polyester Stretch, 100% Polyester
Lining: 100% Polyester
Filling: 100% Polyester (recycled)

FEATURES breathable TPU lamination, water column
10.000 mm, moisture vapour permeability
3.000 g/m²/24 h, all seams taped, water proof,
PFAs-free impregnation

SIZE S-4XL



43445 KSW 101 MN SKI JCKT FUNCTIONAL JACKET WITH ZIP-OFF HOOD AND SNOWCATCHER

MATERIAL Full Dull Polyester Ripstop Melange, 100% Polyester | Lining: 100% Polyester Filling: 100% Polyester (recycled)

FEATURES breathable TPU lamination, water column 10.000 mm, moisture vapour permeability 3.000 g/m²/24 h, all seams taped, water proof, PFAs-free impregnation

SIZE S-4XL



43445-00298
anthracite
melange

43433 KSW 53 MN SKI JCKT FUNCTIONAL JACKET WITH HOOD AND SNOWCATCHER

MATERIAL Ripstop Polyester, 100% Polyester | Polyester Twill, 100% Polyester Lining: 100% Polyester Filling: 100% Polyester (recycled)

FEATURES breathable TPU lamination, water column 10.000 mm, moisture vapour permeability 5.000 g/m²/24 h, all seams taped, water proof, PFAs-free impregnation

SIZE S-4XL



43433-00811
dark blue

43433-00756
dark olive

43433-00269
black blue

43432 KSW 45 MN SKI JCKT FUNCTIONAL JACKET WITH ZIP-OFF HOOD AND SNOWCATCHER

MATERIAL Full Dull Polyester Stretch, 100% Polyester | Full Dull Polyester Ripstop, 100% Polyester Lining: 100% Polyester Filling: 100% Polyester (recycled)

FEATURES breathable TPU lamination, water column 10.000 mm, moisture vapour permeability 3.000 g/m²/24 h, all seams taped, water proof, PFAs-free impregnation

SIZE S-4XL



43432-00200
black

43432-00756
dark olive

43430 KSW 32 MN SKI JCKT FUNCTIONAL JACKET WITH ZIP-OFF HOOD AND SNOWCATCHER

MATERIAL Full Dull Polyester Stretch, 100% Polyester Lining: 100% Polyester Filling: 100% Polyester (recycled)

FEATURES breathable TPU lamination, water column 10.000 mm, moisture vapour permeability 3.000 g/m²/24 h, all seams taped, water proof, PFAs-free impregnation

SIZE S-4XL



43430-00237
steel

43430-00811
dark blue

43430-00702
forest green

PERFORMANCE



43446-00200
black



43446 KSW 102 MN SKI JCKT FUNCTIONAL JACKET WITH ZIP-OFF HOOD AND SNOWCATCHER

MATERIAL Full Dull Polyester Stretch, 100% Polyester | Full Dull Polyester Ripstop Melange, 100% Polyester
Lining: 100% Polyester
Filling: 100% Polyester (recycled)

FEATURES breathable TPU lamination, water column 10.000 mm, moisture vapour permeability 3.000 g/m²/24 h, all seams taped, water proof, PFAs-free impregnation

SIZE S-4XL



43436-00237
steel

43436-00811
dark blue

43436-00771
pistachio

43436-00269
black blue

43436 KSW 47 MN SKI JCKT FUNCTIONAL JACKET WITH ZIP-OFF HOOD AND SNOWCATCHER

MATERIAL Full Dull Polyester Stretch, 100% Polyester | Full Dull Polyester Ripstop, 100% Polyester
Lining: 100% Polyester
Filling: 100% Polyester (recycled)

FEATURES breathable TPU lamination, water column 10.000 mm, moisture vapour permeability 3.000 g/m²/24 h, all seams taped, water proof, PFAs-free impregnation

SIZE S-4XL



43437-00846
mid blue

43437-00766
spring green

43437 KSW 48 MN SKI JCKT FUNCTIONAL JACKET WITH ZIP-OFF HOOD AND SNOWCATCHER

MATERIAL Full Dull Polyester Stretch, 100% Polyester | Full Dull Polyester Ripstop Melange, 100% Polyester
Lining: 100% Polyester
Filling: 100% Polyester (recycled)

FEATURES breathable TPU lamination, water column 10.000 mm, moisture vapour permeability 3.000 g/m²/24 h, all seams taped, water proof, PFAs-free impregnation

SIZE S-6XL



SKI

43440 KSW 52 MN SKI JCKT FUNCTIONAL JACKET WITH ZIPP-OFF HOOD AND SNOWCATCHER

MATERIAL Polyester Twill, 100% Polyester |
Ripstop Melange Polyester, 100% Polyester
Lining: 100% Polyester
Filling: 100% Polyester (recycled)

FEATURES breathable TPU lamination, water column
10.000 mm, moisture vapour permeability
5.000 g/m²/24 h, all seams taped, water proof,
PFAs-free impregnation

SIZE S-4XL



43440-00830
blue night

43440-00200
black

43440-00269
black blue

43435 KSW 72 MN SKI JCKT HYBRID JACKET WITH ZIPP-OFF HOOD AND SNOWCATCHER

MATERIAL Polyester Twill, 100% Polyester
Lining: 100% Polyester
Filling: 100% Polyester (recycled)

FEATURES breathable TPU lamination, water column
10.000 mm, moisture vapour permeability
3.000 g/m²/24 h, critical seams taped,
water repellent, PFAs-free impregnation

SIZE S-4XL



43435-00200
black

43435-00830
blue night

43435-00702
forest green

43435-00860
dark steelblue

43439 KSW 55 MN SKI JCKT FUNCTIONAL JACKET WITH HOOD, SNOWCATCHER AND UNDERARM VENTILATION

MATERIAL Herringbone Polyester, 100% Polyester |
Lining: 100% Polyester
Filling: 100% Polyester (recycled)

FEATURES breathable TPU lamination, water column
10.000 mm, moisture vapour permeability
5.000 g/m²/24 h, all seams taped, water proof,
PFAs-free impregnation

SIZE S-XXL



43439-00756
dark olive

43439-00200
black

43439-00860
dark steelblue

PERFORMANCE



43438-00237
steel



43438 KSW 54 MN SKI JCKT FUNCTIONAL JACKET WITH HOOD, SNOWCATCHER AND UNDERARM VENTILATION

MATERIAL Polyester Twill, 100% Polyester |
Ripstop Polyester, 100% Polyester
Lining: 100% Polyester
Filling: 100% Polyester (recycled)

FEATURES breathable TPU lamination, water column
10.000 mm, moisture vapour permeability
5.000 g/m²/24 h, all seams taped, water proof,
PFAs-free impregnation

SIZE S-XXL



43441-00200
black

43441-00830
blue night

43441-00541
dark orange

43441-00702
forest green

43441 KSW 50 MN SKI JCKT FUNCTIONAL JACKET WITH ZIP-OFF HOOD, SNOWCATCHER AND UNDERARM VENTILATION

MATERIAL Dermizax 4-Way Polyamide Stretch,
84% Polyamide, 16% Elastane
Lining: 100% Polyester
Filling: 100% Polyester (recycled)

FEATURES breathable PU lamination, water column
20.000 mm, moisture vapour permeability
10.000 g/m²/24 h, all seams taped, waterproof

SIZE S-4XL



43442-00830
blue night

43442-00766
spring green



43442 KSW 51 MN SKI JCKT FUNCTIONAL JACKET WITH ZIP-OFF HOOD, SNOWCATCHER AND UNDERARM VENTILATION

MATERIAL Dermizax 4-Way Polyamide Stretch,
84% Polyamide, 16% Elastane
Lining: 100% Polyester
Filling: 100% Polyester (recycled)

FEATURES breathable PU lamination, water column
20.000 mm, moisture vapour permeability
10.000 g/m²/24 h, all seams taped, waterproof

SIZE S-4XL



SKI

36415 THONES MN SKI SFTSHLL PNTS A (STRETCH) SOFTSHELL PANTS WITH EDGE PROTECTION, SNOWCATCHER AND DETACHABLE STRAPS

MATERIAL Softshell, 94% Polyester, 6% Elastane | Backside
Softshell: Antipilling Microfleece, 100% Polyester

FEATURES breathable TPU lamination, water column
10.000 mm, moisture vapour permeability
3.000 g/m²/24 h, water repellent,
PFAs-free impregnation

SIZE **S - 4XL**



36415-00200
black



38718 KSW 146 MN SKI PNTS FUNCTIONAL PANTS WITH DETACHABLE STRAPS, EDGE PROTECTION AND SNOWCATCHER

MATERIAL Full Dull Polyester Ripstop Melange,
100% Polyester
Lining: 100% Polyester
Filling: 100% Polyester (recycled)

FEATURES breathable TPU lamination, water column
10.000 mm, moisture vapour permeability
3.000 g/m²/24 h, all seams taped,
waterproof, PFAs-free impregnation

SIZE **S - 4XL**



38718-00298
anthracite melange



PERFORMANCE



43431-00200
44186-00200
43823-00200
black
until 6XL

43431-00541
dark orange

43431-00269
black blue
until 6XL

43431-00811
dark blue

43431-00766
spring green

43431 KSW 100 ENOSH MN SKI PNTS FUNCTIONAL PANTS WITH DETACHABLE STRAPS, EDGE PROTECTION AND SNOWCATCHER

MATERIAL Full Dull Polyester Stretch, 100% Polyester
Lining: 100% Polyester
Filling: 100% Polyester (recycled)

FEATURES breathable TPU lamination, water column 10.000 mm, moisture vapour permeability 3.000 g/m²/24 h, all seams taped, waterproof, PFAs-free impregnation

SIZE S-6XL



44186 KSW 100 ENOSH UG MN SKI PNTS FUNCTIONAL PANTS WITH DETACHABLE STRAPS, EDGE PROTECTION AND SNOWCATCHER

MATERIAL Full Dull Polyester Stretch, 100% Polyester
Lining: 100% Polyester
Filling: 100% Polyester (recycled)

FEATURES breathable TPU lamination, water column 10.000 mm, moisture vapour permeability 3.000 g/m²/24 h, all seams taped, waterproof, PFAs-free impregnation

SIZE 23-30



43431-00756
dark olive

43431-00715
pale olive

43431-00830
blue night

43431-00702
forest green

43431-00902
sky



43823 KSW 100 ENOSH LG MN SKI PNTS FUNCTIONAL PANTS WITH DETACHABLE STRAPS, EDGE PROTECTION AND SNOWCATCHER

MATERIAL Full Dull Polyester Stretch, 100% Polyester
Lining: 100% Polyester
Filling: 100% Polyester (recycled)

FEATURES breathable TPU lamination, water column 10.000 mm, moisture vapour permeability 3.000 g/m²/24 h, all seams taped, waterproof, PFAs-free impregnation

SIZE 98-122



SKI

43444 KSW 83 MN SKI PNTS FUNCTIONAL PANTS WITH DETACHABLE STRAPS, EDGE PROTECTION, SNOWCATCHER AND LEG VENTILATION

MATERIAL Herringbone Polyester, 100% Polyester
Lining: 100% Polyester
Filling: 100% Polyester (recycled)

FEATURES breathable TPU lamination, water column
10.000 mm, moisture vapour permeability
5.000 g/m²/24 h, all seams taped, waterproof,
PFAs-free impregnation

SIZE S-4XL



43444-00200
black

43444-00541
dark orange

43444-00269
black blue

43444-00756
dark olive

43443 KSW 82 MN SKI PNTS FUNCTIONAL PANTS WITH DETACHABLE STRAPS, EDGE PROTECTION, SNOWCATCHER AND LEG VENTILATION

MATERIAL Dermizax 4-Way Polyamide Stretch,
84% Polyamid, 16% Elastane
Lining: 100% Polyester
Filling: 100% Polyester (recycled)

FEATURES breathable TPU lamination, water column
20.000 mm, moisture vapour permeability
10.000 g/m²/24 h, all seams taped, waterproof

SIZE S-4XL



43443-00200
black

43443-00541
dark orange

43443-00766
spring green

PETITE SIZES MEN

For petite size clothes cuts are adjusted in length and proportion so that they fit perfectly. For pants, the waist height is shortened, the leg width is reduced and the knee position is set higher up respectively. Jackets are tailored with a shortened sleeve length and a shortened torso part. The usual regular men's sizes are 48-60. The value of the petite size is obtained by halving the regular size (24-30).

PERFORMANCE



43055-00836
dark petrol

43055-00200
black

43055-00233
dark steel

43055 KOW 161 MN JCKT KG FUNCTIONAL JACKET WITH ZIP-OFF HOOD

MATERIAL	Full Dull Ripstop, 100% Polyester Lining: 100% Polyester Filling: 100% Polyester
FEATURES	breathable TPU lamination, water column 10.000 mm, moisture vapour permeability 3.000 g/m ² /24 h, all seams taped, waterproof, PFAs-free impregnation
SIZE	24-30



44207-00200
black



44207 KOW 49 KG MN SFTSHLL PNTS STRETCH SOFTSHELL PANTS

MATERIAL	Softshell Stretch, 88% Polyester, 12% Elastane Backside Softshell Stretch: Antipilling Microfleece, 100% Polyester
FEATURES	breathable TPU lamination, water column 10.000 mm, moisture vapour permeability 10.000 g/m ² /24 h, water-repellent
SIZE	24-30



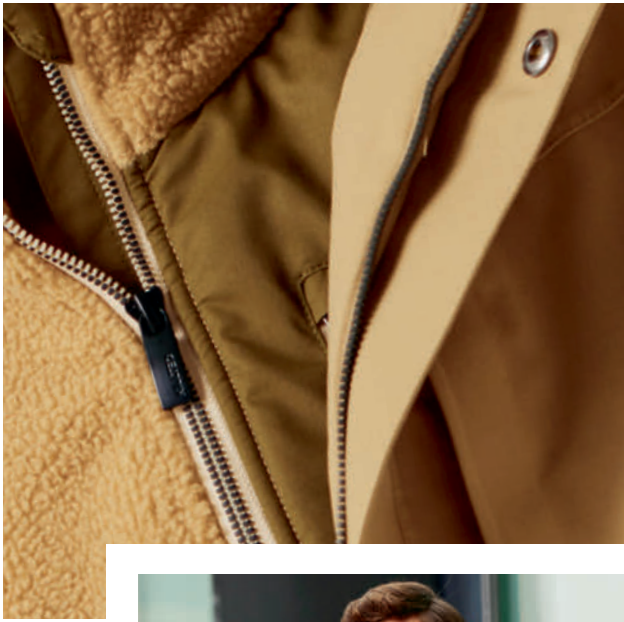
44186-00200
black

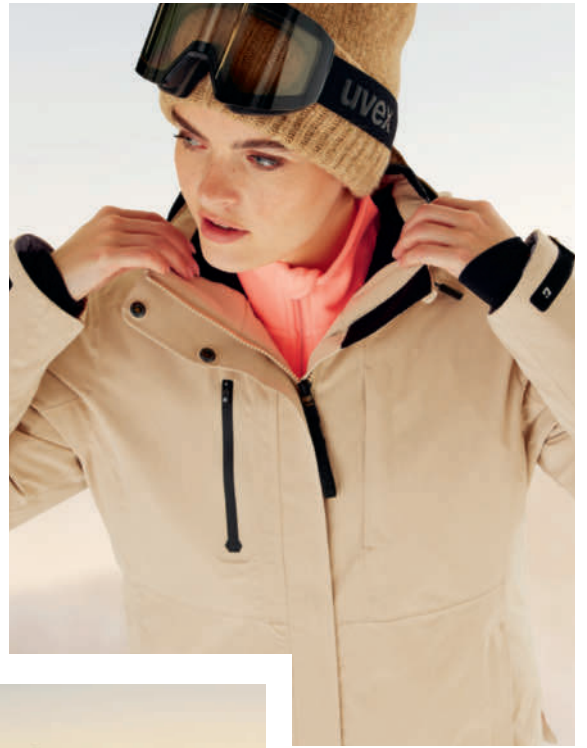


44186 KSW 100 ENOSH UG MN SKI PNTS FUNCTIONAL PANTS WITH DETACHABLE STRAPS, EDGE PROTECTION AND SNOWCATCHER

MATERIAL	Full Dull Polyester Stretch, 93% Polyester, 7% Elastane Lining: 100% Polyester Filling: 100% Polyester (recycled)
FEATURES	breathable TPU lamination, water column 10.000 mm, moisture vapour permeability 3.000 g/m ² /24 h, all seams taped, waterproof, PFAs-free impregnation
SIZE	23-30







SERVICE

EXPORT DEPARTMENT	ACCOUNTING DEPARTMENT	CUSTOMER SERVICES	RECEPTION
Telephone +49 (0) 41 81 20 08 352 +49 (0) 41 81 20 08 353	Telephone +49 (0) 41 81 20 08 423	Telephone +49 (0) 41 81 20 08 510	Telephone +49 (0) 41 81 20 08 0
Fax +49 (0) 41 81 20 08 249	Fax +49 (0) 41 81 20 08 429	Fax +49 (0) 41 81 20 08 519	Fax +49 (0) 41 81 20 08 489

SIZE INDEX

LADIES	REGULAR	GER	34	36	38	40	42	44	46	48	50	52	54	56
		US	4	6	8	10	12	14	16	18	20	22	24	
		US	XXS	XS	S	M	L	XL	XXL	3XL	4XL	5XL	6XL	7XL
	PETITE	GER	17	18	19	20	21	22	23	24	25	26	27	
		US	4P	6P	8P	10P	12P	14P	16P	18P	20P	22P	24P	26P
	TALL	GER	68	72	76	80	84	88	92	96	100	104	108	112
US		4T	6T	8T	10T	12T	14T	16T	18T	20T	22T	24T	26T	
MEN UNISEX	REGULAR	GER		XS	S	M	L	XL	XXL	3XL	4XL	5XL	6XL	
		US		XS	S	M	L	XL	XXL	3XL	4XL	5XL	6XL	
	PETITE	GER		23	24	25	26	27	28	29	30	31	32	
		US		XS P	S P	M P	L P	XL P	XXL P	3XL P	4XL P	5XL P	6XL P	
	TALL	GER		94	98	102	106	110	114	118	122	124	126	
		US		XS T	S T	M T	L T	XL T	XXL T	3XL T	4XL T	5XL T	6XL T	
			46	48	50	52	54	56	58	60	62	64		
KIDS	REGULAR	GER				116	128	140	152	164	176			
MINI		GER	74/80	86/92	98/104	110/116	122/128							
		US	0	2	4	6	8	10	12	14	16			

AUSTRIA

killtec AT
Gregor Huber
Brandboxx Salzburg
3. OG, Raum A1
Moosfeldstrasse 1
5101 Bergheim
huber@killtec.de

BELGIUM

Olivier Van Hee
Gaversepontweg 8
9810 Nazareth
0032 475725665
spiroux@telenet.be

CANADA

killtec NA Inc. / CANADA
421 Rue Principale
JOR 1R4
St. Sauveur, QC
001 8667271451
001 8775279879
info@killtec.ca
www.killtec.com

CHILE

Soc. Paralelo 41 LTDA.
San Juan 431b
Puerto Varas
0056 67 232190
alonso.leiva@gmail.com

CZECH REPUBLIC/ SLOVAKIA/HUNGARY

killtec CZ
Josef Moravec
Becovská 1618/7b
104 00 Praha 10 - Uhrineves
00420 602250926
josef.moravec@killtec.cz
eva.nekovarova@killtec.cz

FRANCE

killtec FR
Jérôme Brun
Show Room Savoie Hexapôle
Sortie 13 - Bat AGRION
101 rue Maurice Herzog
73420 Mery
0033 6 19 56 43 22
killtec@2pointb.fr

GREECE

4S Distribution
Agamemnonos 11
15235 Vrillissia
0030 2106858021
info@4sdistribution.gr

ITALY

Geier Diffusion K.G.
Des Geier Werner & Co
Via Arnariestr. 37
39046 Ortisei
00390 471797579
00390 471797630
info@geierdiffusion.com
www.geierdiffusion.com

LEBANON

Mike Sport & Co.
Zalka Highway
Mike Sport & Co. Building
Beirut - Lebanon
00961 1 8888 55
00961 1 889 222
mispo@mikesport.com

NETHERLANDS

killtec NL
Patrick Rüter
Sports Business Center, B05
Plesmanstraat 1
3833 LA Leusden
0031 615 642 245
ruether@killtec.de

POLAND

LARIX Janusz Pięta S.K.A.
ul. Orzeszkowej 40
43-300 Bielsko-Biala
0048 33 4975040
0048 33 4975041
killtec@killtec.pl
www.killtec.pl

ROMANIA

Tehnickal Sport Solutions SRL
Xenopol D. Alexandru street, No 15
2nd floor, apartment 3
010472 Bucharest
0040 728 777 600
0040 728 777 602
office@killtecsport.ro

SPAIN

Campri Agencies SPAIN S.L.
Federico Frank
C/.Joan Ramon Jimenez,
4 Nave 3
08960 Sant Just Desvern
0034 933716777
campri@campri.es
www.campri.es

SWITZERLAND

killtec CH
Hansi Brühlmann
Thurgauerstrasse 109
SR Haus 9 Nord / EG
8152 Glattpark
0041 798183825
bruehlmann@killtec.de

TURKEY

Ender Spor A.S
Evren.Mah.Gülbahar, Cad.No.12
34420 Günesli-Istanbul
0090 2126300063
0090 2126300067
info@enderspor.com
www.enderspor.com

USA

killtec NA Inc. / USA
421 Rue Principale
JOR 1R4
St. Sauveur, QC
001 8667271451
001 8775279879
info@killtec.ca
www.killtec.com

CONTENT

ITEM NO.	ARTICLE	PAGE	ITEM NO.	ARTICLE	PAGE	ITEM NO.	ARTICLE	PAGE
36410-000	THÔNES WMN SKI SFTSHLL PNTS A	35	41843-000	KOW 4 MN JCKT	45	43311-000	KOW 189 WMN JCKT	16
36411-000	THÔNES WMN SKI SFT PNTS KG	35, 39	41848-000	KOW 80 MN PRK	49	43312-000	KOW 22 WMN JCKT	17
36414-000	THÔNES WMN SKI SFTSHLL PNTS C	35	42403-000	KSW 311 WMN SKI PNTS	25	43313-000	KOW 18 WMN PRK	16
36415-000	THÔNES MN SKI SFTSHLL PNTS A	60	43055-000	KOW 161 MN JCKT KG	46, 63	43314-000	KOW 73 MN FLC JCKT	45
37411-000	KOW 140 WMN JCKT	11	43292-000	KOW 2 WMN FLX JCKT	09	43317-000	KOW 75 MN FLC JCKT	44
37589-000	KOW 161 MN JCKT	46	43293-000	KOW 3 WMN FLC JCKT	08	43321-000	KOW 87 MN QLTD JCKT	46
37726-000	KOW 165 WMN PRK	15	43294-000	KOW 4 WMN FLX JCKT	10	43322-000	KOW 65 MN FLC JCKT	44
38030-000	KOW 170 WMN JCKT KG	11, 38	43295-000	KOW 5 WMN KNTFLC JCKT	09	43323-000	KOW 79 MN SFTSHLL JCKT	45
38718-000	KSW 146 MN SKI PNTS	60	43296-000	KOW 6 WMN KNTFLC JCKT	08	43325-000	KOW 89 MN JCKT	48
39702-000	KOW 37 WMN JCKT	11	43297-000	KOW 7 WMN VST	08	43328-000	KOW 81 MN JCKT	48
39847-000	KOW 34 WMN SFTSHLL PNTS	18	43300-000	KOW 8 WMN SFTSHLL JCKT	10	43331-000	KOW 85 MN PRK	48
39849-000	KOW 49 MN SFTSHLL PNTS	49	43302-000	KOW 10 WMN QLTD JCKT	12	43332-000	KOW 94 MN PRK	49
40878-000	KSW 99 MN FLC SHRT	54	43303-000	KOW 11 WMN QLTD PRK	14	43333-000	KOW 80 MN FLX JCKT	45
40880-000	KSW 101 WMN FLC SHRT	30	43304-000	KOW 12 WMN QLTD JCKT	13	43411-000	KSW 25 WMN SKI JCKT	32
41809-000	KOW 55 WMN QLTD PRK	13	43305-000	KOW 23 WMN QLTD JCKT	10	43412-000	KSW 26 WMN SKI JCKT	32
41810-000	KOW 56 WMN QLTD CT	17	43306-000	KOW 14 WMN QLTD PRK	12	43414-000	KSW 28 WMN SKI JCKT	32
41815-000	KOW 303 WMN PRK	15	43307-000	KOW 19 WMN PRK	14	43416-000	KSW 30 WMN SKI JCKT	33
41817-000	KOW 93 WMN PKR	12	43308-000	KOW 15 WMN JCKT	14	43417-000	KSW 31 WMN SKI QLTD JCKT	32
41834-000	KOW 60 MN QLTD JCKT	46	43310-000	KOW 16 WMN PRK	17	43418-000	KSW 33 WMN SKI JCKT	33

Minor changes of style and colours are subject to change without prior notice.

ITEM NO.	ARTICLE	PAGE	ITEM NO.	ARTICLE	PAGE	ITEM NO.	ARTICLE	PAGE
43419-000	KSW 35 WMN SKI JCKT	33	43441-000	KSW 50 MN SKI JCKT	59	43616-000	KSW 111 WMN SKI QLTD JCKT	22
43420-000	KSW 39 WMN SKI JCKT	34	43442-000	KSW 51 MN SKI JCKT	59	43617-000	KSW 112 WMN SKI QLTD JCKT	23
43421-000	KSW 42 WMN SKI JCKT	34	43443-000	KSW 82 MN SKI PNTS	62	43618-000	KSW 113 WMN SKI QLTD JCKT	23
43422-000	KSW 43 WMN SKI JCKT	34	43444-000	KSW 83 MN SKI PNTS	62	43620-000	KSW 115 WMN SKI QLTD JCKT	23
43424-000	KSW 60 WMN SKI PNTS	37	43445-000	KSW 101 MN SKI JCKT	56	43621-000	KSW 116 WMN SKI JCKT	24
43425-000	KSW 61 WMN SKI PNTS	37	43446-000	KSW 102 MN SKI JCKT	57	43622-000	KSW 117 WMN SKI JCKT	24
43427-000	KSW 98 WMN SKI JCKT	33	43455-000	KOW 105 MN FLC JCKT	44	43623-000	KSW 118 WMN SKI QLTD JCKT	23
43428-000	KSW 249 WMN SKI PNTS_ERIELLE	36	43456-000	KOW 76 MN VST	44	43627-000	KSW 119 WMN SKI SFTSHLL PNTS	25
43429-000	KSW 24 MN SKI JCKT	55	43458-000	KSW 56 WMN FLX SHRT	31	43665-000	KSW 249 KG WMN SKI PNTS_ERIELLE	36, 39
43430-000	KSW 32 MN SKI JCKT	56	43460-000	KSW 58 MN FLX SHRT	55	43821-000	KSW 249 LG WMN SKI PNTS_ERIELLE	36
43431-000	KSW 100 ENOSH MN SKI PNTS	61	43461-000	KSW 59 MN FLX SHRT	55	43822-000	KSW 252 MN QLTD JCKT	55
43432-000	KSW 45 MN SKI JCKT	56	43464-000	KSW 70 WMN FLX SHRT	31	43823-000	KSW 100 ENOSH LG MN SKI PNTS	61
43433-000	KSW 53 MN SKI JCKT	56	43465-000	KSW 71 MN FLX SHRT	54	44186-000	KSW 100 ENOSH UG MN SKI PNTS	61, 63
43435-000	KSW 72 MN SKI JCKT	58	43489-000	KOW 88 MN QLTD JCKT	47	44207-000	KOW 49 KG MN SFTSHLL PNTS	49, 63
43436-000	KSW 47 MN SKI JCKT	57	43492-000	KOW 95 MN JCKT	47	44208-000	KOW 34 KG WMN SFTSHLL PNTS	18, 38
43437-000	KSW 48 MN SKI JCKT	57	43495-000	KSW 121 WMN FLX SHRT	30			
43438-000	KSW 54 MN SKI JCKT	59	43610-000	KSW 109 WMN LS SHRT	22			
43439-000	KSW 55 MN SKI JCKT	58	43611-000	KSW 110 WMN LS SHRT	22			
43440-000	KSW 52 MN SKI JCKT	58	43613-000	KSW 108 WMN FLC JCKT	22			

GENERAL TERMS AND CONDITIONS

TERMS AND CONDITIONS OF SALE AND DELIVERY KILLTEC SPORT- UND FREIZEIT GMBH RETAIL TRANSACTIONS

1. SCOPE, CONTRACT EXECUTION

The following terms and conditions shall be applicable to offers by killtec and all purchase and sale agreements, work delivery agreements with killtec, including consultations. The general purchasing terms and conditions of the buyer shall not be acknowledged. Any agreements deviating from the above require the written confirmation of killtec.

Offers shall be non-binding. A contract shall arise with the written contract confirmation of killtec or with delivery being effected.

Improvements and other changes to models, including minor color alterations, shall be admissible if such are reasonable for the buyer.

2. PRICES

The killtec price list effective on the delivery date or the offer price plus applicable value-added tax stipulated by law shall be applicable. We reserve the right to change prices.

3. DELIVERY, DELIVERY PERIODS

Delivery periods shall not commence prior to all the details of the contract being clarified in their entirety. Delivery periods shall be deemed to be complied with, if the shipment or retrieval of the deliverables is caused by the date the delivery period lapses or, in the event delivery is delayed for reasons the buyer is not responsible for, if notice is provided within the agreed upon delivery period regarding when the shipment shall be possible.

Should force majeure, strikes, or lock-outs, or any other labor dispute measures or their effects or other events outside the volition of killtec prevent killtec from fulfilling any of its delivery obligations, then the delivery periods shall be extended by the duration of such events and a reasonable time period for the recommencement of operations.

Such shall also be applicable if said circumstances occur at sub-suppliers or during any delivery default. The commencement and end of any such obstructions shall be immediately reported to the buyer. Should it be unreasonable for killtec or the buyer to fulfill the contract because a delivery is delayed, then both parties shall be entitled to withdraw from the contract. The buyer shall be authorized to withdraw from the contract in accordance with applicable law, if killtec is in delivery default or the delivery is impossible for reasons caused by killtec. For any other claims arising from such delivery default or impossibility, Item 7 of these Terms and Conditions shall be applicable.

Timely and quantity-conform partial deliveries shall be permitted and can be invoiced separately. Such shall remain subject to correct and timely delivery by the suppliers of killtec.

Delivery inside of Germany of orders having a product value of more than €100.00 shall be effected free of charge to the seat of the buyer with the transportation method chosen by killtec and at the risk of the buyer. Rush and special shipping requested by the buyer and deliveries of contracts having a product value of under €100.00 shall be effected at the cost and risk of the buyer. A flat rate surcharge shall be calculated on the basis of the price list, as such may be amended from time to time.

Deliveries to foreign countries shall in principle be effected ex works Buchholz or ex works Hamburg. Customs, import taxes, or similar fees shall be borne by the buyer.

4. PAYMENT CONDITIONS

killtec shall grant a 4% discount on deliveries inside of Germany for payments received within 10 days of the invoice date. Payment is to be rendered in the net amount without any deductions within 30 days of the invoice date. Agreed upon discount deductions shall not be permitted, as long as older payable invoices have not been paid in full. Special sales shall be effected exclusively on the basis of the net amounts and shall be immediately payable. Deliveries to foreign countries shall, in principle, be effected in consideration of advance payment. Agreements deviating from the above shall be valid only if such are memorialized in an offer or a valid price list.

The date on which the amount has been received by killtec or credited to its bank account shall be deemed to be the date the

payment was received. The risk of the payment path shall in any event be borne by the buyer. Interest accrued under applicable law shall be calculated for default periods (8 percentage points over the base interest rate). Such shall have no effect upon the right to file for other default damages.

Exchanges shall not be accepted as a payment method. Should it become evident after a contract has been executed that the claim killtec has to payment is jeopardized on account of the buyer lacking solvency, then killtec shall be authorized to demand the immediate payment of any and all of its still open claims and to effect the fulfillment of executed delivery agreements only in consideration of security or pre-payment therefor being rendered by the buyer. Such shall not affect any other claims under applicable law. The buyer can set-off its claims against the claims of killtec only if the counter-claim of the buyer has not been contested or has been established in a legally effective manner. The same shall apply to exercising any retention or service refusal rights.

5. OWNERSHIP PROVISIO

The products shall remain the property of killtec until all open claims arising from the business relationship, including any ancillary claims, have been paid in their entirety and until checks have been cashed. For current invoices, the ownership proviso shall be considered security for the account claim of killtec.

Should the proviso goods be combined with other goods not belonging to killtec, then killtec shall acquire co-ownership of the new item with the invoice value of its proviso goods being proportionate to the value of the other goods combined therewith as of the date they were combined. The buyer shall hold such for killtec in safe-keeping with the diligence of a professional.

The buyer shall be authorized to re-sell the proviso goods only with due consideration for the following provisions and only under the condition that the claims arising from the re-sale be transferred to killtec. The authorization of the buyer to sell proviso goods during the ordinary course of business shall terminate in the event killtec revokes such authorization as a consequence of any deterioration in the credit of the buyer that killtec becomes aware of.

The buyer has to sufficiently insure the proviso goods, in particular, against fire and theft. Claims against insurance companies arising from cases of damages are hereby assigned to killtec in the amount of the value of the proviso goods (gross amount of killtec invoices).

The buyer hereby assigns in advance any and all claims it is entitled to at present or in the future arising from any re-sale or arising from any other legal reason regarding the goods delivered by killtec as of the date such claims are caused and in the amount of the value of the proviso goods. And killtec accepts such assignment. The value of the proviso goods shall be the invoice amount plus a security premium of 10%, which shall not be applied, however, provided that third party rights conflict therewith.

The buyer shall remain authorized to collect the assigned claims in its own name as long as it is properly fulfilling its contractual obligations vis-à-vis killtec and/or its economic situation has not deteriorated.

The buyer is to immediately notify killtec in the event the ownership rights of killtec are seized or otherwise negatively impacted by third parties and is to confirm the ownership rights of killtec vis-à-vis third parties as well. The buyer shall not be permitted to pledge or transfer the proviso goods as security. Should the value of the securities rendered to killtec exceed the claims by a total of more than 10%, then killtec shall, upon demand by the buyer, be obligated to release correspondent securities. Upon all open claims arising from the business relationship being re-paid, ownership of the proviso goods and the assigned claims shall be transferred to the buyer.

6. DEFECT LIABILITY

Obvious or visible defects are to be immediately reported in writing, but by no later than a week after the goods have been received; non-visible defects are to be reported immediately after they have been identified. Notwithstanding any

negotiations regarding the complaints, killtec shall reserve the right to object to complaints for defects that have not been inspected and objected to in a timely and proper manner. Defective goods are to be sent to killtec with the shipping order and the packaging slip and shall be improved or replaced with unobjectionable goods by and at the discretion of killtec within a reasonable period of time. Should the subsequent performance ultimately fail or should killtec allow a reasonable deadline for such subsequent performance set for it to lapse without success on account of its own culpability or should killtec refuse to render such subsequent performance or should such be impossible or unreasonable for the buyer, then the buyer can withdraw from the contract or demand that the price be reduced. Should but minor deviations exist that do not negatively impact the functionality of the goods, then the orderer shall only be entitled to a price reduction.

Insofar as a defect has not been maliciously concealed or a guarantee regarding the quality of the goods has been given, defect liability shall be precluded if the goods are b-goods of the parties offered at sui generis conditions. Defect claims contemplated under § 437 BGB (Bürgerliches Gesetzbuch, the Civil Code) shall lapse in 12 months commencing as of the delivery date. Item 7 of these Terms and Conditions shall be applicable to any liability regarding claims for damages.

7. GENERAL LIABILITY

Notwithstanding this Item 3 para. 3, claims for damages of any kind—within and without the framework of defect liability—arising, for example, from default or impossibility, due to a violation of any other contractual obligations, arising from culpability regarding termination of any contract, arising from illegal actions or from any other legal reason, especially of claims not caused to the deliverables themselves, shall be precluded, insofar as the following two paragraphs do not contain anything to the contrary.

Liability shall only apply for malicious intent or gross negligence, for culpable injury to life, body, health, for maliciously concealed defects, for the assumption of a quality guarantee, or for defects in the deliverables, provided that liability is prescribed under the Produkthaftungsgesetz (the Product Liability Act) for material damages to privately used things or for personal damages.

killtec shall also be liable for the culpable violation of material contractual obligations; in such an event, liability shall, however, be limited to damages that are typical for the contract and reasonably predictable. Material contractual obligations shall be such obligations, the fulfillment of which enables the proper performance of the contract per se and the compliance with which the contractual partners regularly rely upon and may rely upon.

8. PLACE OF PERFORMANCE, VENUE, MISCELLANEOUS

The place of performance shall be the seat of killtec.

The exclusive venue for any and all disputes with merchants or persons not having any general jurisdiction within Germany—even for check disputes—shall be Hamburg, Germany. killtec shall be authorized to take legal action against the buyer in its general jurisdiction as well.

German law shall apply. The application of the United Nations Convention on Contracts for the International Sale of Goods (CISG) shall be precluded. Provided that such are used by killtec during the order, the Incoterms 2000 shall be applicable, as they may be amended from time to time. The ineffectiveness of individual provisions shall not affect the validity of the remainder of these Terms and Conditions. Any and all personal data shall be treated in confidence by killtec with due consideration for applicable law.

As of: 1 June 2012



 **killtec**[®]

Sport- und Freizeit GmbH
Zimmererstraße 5
21244 Buchholz i. d. N.

Fon +49 (0) 4181 2008-0
E-Mail verkauf@killtec.de
www.killtec.com

Art. No. 44220-000 [DE] | 44221-000 [EN]

