



super.natural

FALL/WINTER 2026

BASE ATTACK

TIMES ARE CHANGING.



AND WITH THEM, THE DEMANDS FOR FUNCTION, STYLE, AND SUSTAINABILITY EVOLVE.

At **super.natural**, we constantly think about where the journey is heading – and how we can help shape it. We may not have all the answers yet, but with our Fall/Winter 26/27 collection, we're coming closer than ever.

FUNCTION MEETS STYLE.

We've refined our product groups and enhanced our proven styles with new, functional details. The result: performance and comfort taken to the next level – **MERINO NEXT LEVEL.**

Our Base Book is designed to spark new ideas and provide fresh perspectives. Be inspired by materials that tell stories and designs that unite function with emotion.

THE DEMANDS FOR FUNCTION, STYLE, AND SUSTAINABILITY EVOLVE.



Thommy Stumpp



Lars Kämper

& the [sn] Team

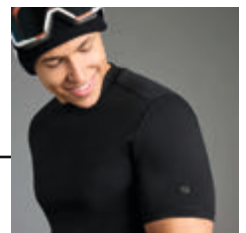


WOMEN

| | |
|---------------------------|----|
| Base Layer | 8 |
| Bio Super.Wool Base Layer | 28 |
| Merino.Lux Base Layer | 34 |

MEN

| | |
|---------------------------|----|
| Base Layer | 40 |
| Bio Super.Wool Base Layer | 60 |
| Merino.Lux Base Layer | 64 |





MAIN FABRICS



SIERRA

140GSM LIGHTWEIGHT JERSEY / ADVANCED WOOL 140

50% finest merino wool, 50% performance polyester

For everyday wear in all weather conditions, the products from our 140 lightweight series are the perfect companions. Whether for strenuous activities or relaxation afterward, the innovative **super.natural** mixed fibers ensure fast drying and pleasantly cool comfort on warm days.



TUNDRA

175GSM MIDWEIGHT JERSEY / ADVANCED WOOL 175

50% finest merino wool, 50% performance polyester

The innovative **super.natural** mixed fibers combine merino wool and polyester for a comfortable, light feeling on warmer days and warmth on cooler days. Our bottoms feature ELASTIC WOOL JERSEY 175, ensuring flexibility and comfort.



ARCTIC

230GSM HEAVYWEIGHT JERSEY / ADVANCED WOOL 230

50% finest merino wool, 50% performance polyester

For cold weather, our ARCTIC series provides perfect insulation without sacrificing comfort. Our bottoms feature ELASTIC WOOL JERSEY 230, ensuring warmth and flexibility.



ELASTIC WOOL JERSEY

ELASTIC WOOL JERSEY 175 / ELASTIC WOOL JERSEY 230

This ELASTIC WOOL JERSEY features all the functionalities of the above BASE LAYER fabrics and adds more stretch to ensure a super comfort fit. We use these JERSEYS in our BASE LAYER bottoms of TUNDRA175 (48% merino wool, 48% Performance Polyester, 4% Elastane) and ARCTIC230 (47% merino wool, 47% Performance Polyester, 6% Elastane) as well as in our WANDERLUST ACCESSORIES.



WOOL SUPER.BRUSH

250GSM COZY FLEECE

30% finest merino wool, 67% performance polyester, 3% elastane

Brushed inside for extra coziness, this functional and comfortable fabric is perfect for sweaters, hoodies, and pants, offering ultimate comfort and warmth.

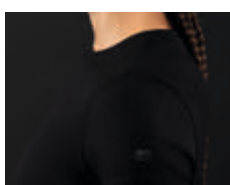


WOOL SUPER.STRETCH

220GSM PONTE ROMA

32% finest merino wool, 63% polyester, 5% elastane

This stretchy and functional fabric is ideal for form-fitting pieces that require movement without losing shape, ensuring the best body climate and comfort.



MERINO.LUX

220GSM PONTE ROMA

36% finest merino wool (16.5μ), 46% performance polyester, 18% lycra

This super-stretchy fabric is extremely high-quality thanks to its composition of fine merino wool and Lycra. Perfect for fitted styles, but comfortable and luxurious at the same time.



BIO SUPER.WOOL JERSEY

175GSM JERSEY

50% finest merino wool, 50% biodegradable polyester

Functional, comfortable, and sustainable, this fabric is perfect for ecological, non-see-through tees and long sleeves.





super.natural

WOMEN

BASE LAYER

Merino sheep possess a light, ultra-breathable coat that shields them from the scorching summer sun. As winter arrives, they naturally grow an extra layer of wool, enabling them to endure very cold temperatures. Inspired by nature's adaptability, **super.natural** offers a range of merino-mix base layers in various styles: short and long sleeves, pants, and different fabric weights – all crafted to regulate your body's temperature, regardless of weather conditions or climate zones.

GRAMMAGES



■ SIERRA 140

The Sierra Nevada, characterized by gentle warmth and scorching heat, inspires our **SIERRA 140** collection. Crafted from **140g lightweight fabric**, these base layers are exceptionally breathable, odor-resistant, and moisture-resistant.



■ TUNDRA 175

Our **TUNDRA 175** collection is a versatile companion year-round. Whether you're hiking, skiing, or simply enjoying the outdoors, the **175g midweight fiber** ensures pleasantly light comfort in any environment.



■ ARCTIC 230

For harsh winter conditions with icy temperatures, our **ARCTIC 230** collection offers unparalleled warmth and protection. Our **230g heavyweight fiber** delivers dependable insulation even in the most extreme cold.



■ BASE+ 255

For those who feel the chill even more – our **Base+** delivers unmatched warmth and softness on the coldest days. Crafted with our innovative **WOOL SUPER.BRUSH** fabric, it's brushed inner layer offers extra insulation and comfort.



■ MERINO.LUX

MERINO.LUX stands for elegant comfort. Crafted from a premium **220g blend of finest merino wool (16.5µ)** and **Lycra**, it offers a flattering fit. Ideal for fitted silhouettes and elevated baselayers: soft and stretchy with a touch of elegance.

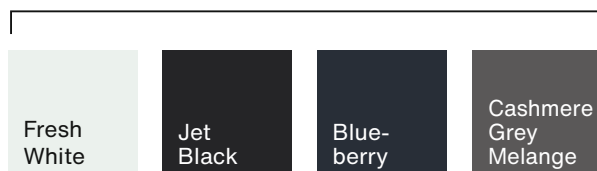


■ BIO BASE

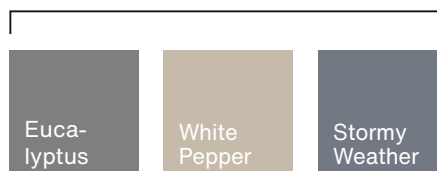
BIO BASE is our most natural take on performance wear. Made from **100% natural fibers**, this fabric is breathable, soft, and naturally temperature-regulating. Free from synthetics, it is ideal for conscious layering.

COLORS

CARRY-OVER



SEASONAL COLOURS WOMEN



FIT GUIDE WOMEN



**W BASE SEMPLICE
BRA**

■ TUNDRA 175
■ BIO BASE



W BASE 1/4 ZIP

■ TUNDRA 175
■ ARCTIC 230



W BASE SLIP

■ TUNDRA 175



W BASE TANK

■ SIERRA 140



W BASE LS

■ SIERRA 140
■ TUNDRA 175
■ ARCTIC 230
■ MERINO.LUX
■ BIO BASE



W BASE THONG

■ TUNDRA 175



**W BASE
V-NECK TEE**

■ SIERRA 140



**W BASE TURTLE
NECK**

■ TUNDRA 175
■ ARCTIC 230
■ BASE+



**W BASE
BOYFRIEND
HIPSTER**

■ TUNDRA 175
■ BIO BASE



W BASE TEE

■ SIERRA 140
■ MERINO.LUX
■ BIO BASE



**W BASE TURTLE
NECK**

■ TUNDRA 175
■ ARCTIC 230
■ BASE+



**W BASE SHORT
TIGHT**

■ TUNDRA 175



**W BASE 1/4 ZIP
TEE**

■ TUNDRA 175



W BASE 3/4 TIGHT

■ TUNDRA 175
■ ARCTIC 230



W BASE TIGHT

■ TUNDRA 175
■ ARCTIC 230
■ BASE+
■ MERINO.LUX
■ BIO BASE



W BASE COMFY TIGHT

■ TUNDRA 175

W SIERRA140 TANK

ADVANCED WOOL 140



SNW021450 | 872
JET BLACK



SNW021450 | W01
BLUEBERRY



SNW021450 | 620
FRESH WHITE



SNW021450 | 671
EUCALYPTUS



SNW021450 | X82
WHITE PEPPER

FUNCTIONAL BASE LAYER TANKTOP

LIFESTYLE, HIKING, OUTDOOR

140GSM LIGHTWEIGHT JERSEY

BREATHABLE, TEMPERATURE-REGULATING

COMFORTABLE FEELING ON THE SKIN

FABRIC **ADVANCED WOOL 140** 50% WOOL (MERINO), 50% POLYESTER
CARE **MACHINE WASH MILD PROCESS ≤40°C, TUMBLE DRY AT LOWER TEMPERATURE, IRON ≤150°C**

FIT **SLIM FIT**
SIZES **XS, S, M, L, XL, XXL**
PACKAGING **BASE BOX SMALL**

W SIERRA140 V NECK

ADVANCED WOOL 140



SNW021470 | 872
JET BLACK



SNW021470 | W01
BLUEBERRY



SNW021470 | 620
FRESH WHITE



SNW021470 | 671
EUCALYPTUS



SNW021470 | X82
WHITE PEPPER

FUNCTIONAL BASE LAYER V-NECK T-SHIRT

LIFESTYLE, HIKING, OUTDOOR

140GSM LIGHTWEIGHT JERSEY

BREATHABLE, TEMPERATURE-REGULATING

COMFORTABLE FEELING ON THE SKIN

FABRIC **ADVANCED WOOL 140** 50% WOOL (MERINO), 50% POLYESTER
CARE **MACHINE WASH MILD PROCESS ≤40°C, TUMBLE DRY AT LOWER TEMPERATURE, IRON ≤150°C**

FIT **SLIM FIT**
SIZES **XS, S, M, L, XL, XXL**
PACKAGING **BASE BOX REGULAR**



W SIERRA140 TEE

FUNCTIONAL BASE LAYER T-SHIRT

LIFESTYLE, HIKING, OUTDOOR

140GSM LIGHTWEIGHT JERSEY

BREATHABLE, TEMPERATURE-REGULATING

COMFORTABLE FEELING ON THE SKIN

SNW020390 | 872
JET BLACK



SNW020390 | X82
WHITE PEPPER



SNW020390 | 671
EUCALYPTUS



SNW020390 | 620
FRESH WHITE



SNW020390 | 55F
CASHMERE GREY MELANGE



SNW020390 | W01
BLUEBERRY

| | | | |
|-----------|----------------------|--------|---|
| FIT | SLIM FIT | FABRIC | ADVANCED WOOL 140 50% WOOL (MERINO), 50% POLYESTER |
| SIZES | XS, S, M, L, XL, XXL | CARE | MACHINE WASH MILD PROCESS ≤40°C, TUMBLE DRY AT LOWER TEMPERATURE, IRON ≤150°C |
| PACKAGING | BASE BOX REGULAR | | |



super.natural

W SIERRA140 POCKET ZIP 1/4

W SIERRA140 POCKET ZIP 1/4

ADVANCED WOOL 140

NEW

STITCHED

SNW027410 | X82
WHITE PEPPERSNW027410 | 67I
EUCALYPTUSSNW027410 | W01
BLUEBERRYSNW027410 | 872
JET BLACK

1/4 ZIP BASE LAYER WITH NYLON ZIP POCKET

TRAINING, OUTDOOR, SKI

140GSM LIGHTWEIGHT JERSEY

BREATHABLE, TEMPERATURE-REGULATING

EMBROIDERY BOX LOGO

| | |
|-----------|------------------|
| FIT | SLIM FIT |
| SIZES | XS, S, M, L, XL |
| PACKAGING | BASE BOX REGULAR |

| | |
|--------|--|
| FABRIC | ADVANCED WOOL 140 50% WOOL (MERINO), 50% POLYESTER |
| CARE | LIGHT TECHNO BI-ELASTIC 78% POLYESTER, 22% ELASTANE MACHINE WASH MILD PROCESS ≤30°C, DO NOT TUMBLE DRY, DO NOT IRON |

W SIERRA140 LS

ADVANCED WOOL 140

SNW025730 | 67I
EUCALYPTUSSNW025730 | 55F
CASHMERE GREY MELANGESNW025730 | W01
BLUEBERRYSNW025730 | X82
WHITE PEPPERSNW025730 | 872
JET BLACK

FUNCTIONAL BASE LAYER LONGSLEEVE

SKI, HIKING, OUTDOOR

140GSM LIGHTWEIGHT JERSEY

BREATHABLE, TEMPERATURE-REGULATING

TIGHT FIT AND ROUND NECKLINE

| | |
|-----------|----------------------|
| FIT | SLIM FIT |
| SIZES | XS, S, M, L, XL, XXL |
| PACKAGING | BASE BOX REGULAR |

| | |
|--------|---|
| FABRIC | ADVANCED WOOL 140 50% WOOL (MERINO), 50% POLYESTER |
| CARE | MACHINE WASH MILD PROCESS ≤40°C, TUMBLE DRY AT LOWER TEMPERATURE, IRON ≤150°C |

W TUNDRA175 ZIP 1/4 TEE

ADVANCED WOOL 175



SNW024470 | 872
JET BLACK



SNW024470 | W01
BLUEBERRY



SNW024470 | 55F
CASHMERE GREY MELANGE



SNW024470 | X82
WHITE PEPPER



SNW024470 | 671
EUCALYPTUS

FUNCTIONAL BASE LAYER T-SHIRT

LIFESTYLE, HIKING, OUTDOOR

175GSM MIDWEIGHT JERSEY

BREATHABLE, TEMPERATURE-REGULATING

COMFORTABLE FEELING ON THE SKIN

FABRIC **ADVANCED WOOL 175** 50% WOOL (MERINO), 50% POLYESTER
CARE **MACHINE WASH MILD PROCESS ≤40°C, TUMBLE DRY AT LOWER TEMPERATURE, IRON ≤150°C**

FIT **SLIM FIT**
SIZES **XS, S, M, L, XL**
PACKAGING **BASE BOX REGULAR**

W TUNDRA175 LS

ADVANCED WOOL 175



SNW020330 | 872
JET BLACK



SNW020330 | W01
BLUEBERRY



SNW020330 | 55F
CASHMERE GREY MELANGE



SNW020330 | 620
FRESH WHITE

FUNCTIONAL BASE LAYER LONGSLEEVE

SKI, HIKING, OUTDOOR

175GSM MIDWEIGHT JERSEY

BREATHABLE, TEMPERATURE-REGULATING

TIGHT FIT AND ROUND NECKLINE

FABRIC **ADVANCED WOOL 175** 50% WOOL (MERINO), 50% POLYESTER
CARE **MACHINE WASH MILD PROCESS ≤40°C, TUMBLE DRY AT LOWER TEMPERATURE, IRON ≤150°C**

FIT **SLIM FIT**
SIZES **XS, S, M, L, XL, XXL**
PACKAGING **BASE BOX REGULAR**

W TUNDRA175 TURTLENECK

ADVANCED WOOL 175



SNW020350 | 620
FRESH WHITE



SNW020350 | 55F
CASHMERE GREY MELANGE



SNW020350 | W01
BLUEBERRY



SNW020350 | 872
JET BLACK

FUNCTIONAL BASE LAYER TURTLENECK

SKI, HIKING, OUTDOOR

175GSM MIDWEIGHT JERSEY

BREATHABLE, TEMPERATURE-REGULATING

TIGHT FIT AND TURTLENECK

FIT SLIM FIT

SIZES XS, S, M, L, XL, XXL

PACKAGING BASE BOX REGULAR

FABRIC

ADVANCED WOOL 175 50% WOOL (MERINO), 50% POLYESTER

CARE

MACHINE WASH MILD PROCESS ≤40°C, TUMBLE DRY AT LOWER TEMPERATURE, IRON ≤150°C

W TUNDRA175 ZIP 1/4

ADVANCED WOOL 175



SNW020370 | 620
FRESH WHITE



SNW020370 | 55F
CASHMERE GREY MELANGE



SNW020370 | W01
BLUEBERRY



SNW020370 | 872
JET BLACK

FUNCTIONAL BASE LAYER ZIP

SKI, HIKING, OUTDOOR

175GSM MIDWEIGHT JERSEY

BREATHABLE, TEMPERATURE-REGULATING

1/4 ZIP FOR MORE FUNCTIONALITY

FIT SLIM FIT

SIZES XS, S, M, L, XL, XXL

PACKAGING BASE BOX REGULAR

FABRIC

ADVANCED WOOL 175 50% WOOL (MERINO), 50% POLYESTER

CARE

MACHINE WASH MILD PROCESS ≤40°C, TUMBLE DRY AT LOWER TEMPERATURE, IRON ≤150°C

W TUNDRA175 BUNNY LS

ADVANCED WOOL 175



SNW026230 | 18J
EUCALYPTUS / VARIOUS



SNW026230 | Y42
WHITE PEPPER / VARIOUS

FUNCTIONAL BASE LAYER LONGSLEEVE

SKI, HIKING, OUTDOOR

175GSM MIDWEIGHT JERSEY

BREATHABLE, TEMPERATURE-REGULATING

TIGHT FIT AND ROUND NECKLINE

FABRIC **ADVANCED WOOL 175** 50% WOOL (MERINO), 50% POLYESTER
CARE **MACHINE WASH MILD PROCESS ≤40°C, TUMBLE DRY AT LOWER TEMPERATURE, IRON ≤150°C**

FIT **SLIM FIT**
SIZES **XS, S, M, L, XL**
PACKAGING **BASE BOX REGULAR**

W TUNDRA175 ZIP 1/4 BUNNY

ADVANCED WOOL 175



SNW026270 | 18J
EUCALYPTUS / VARIOUS



SNW026270 | Y42
WHITE PEPPER / VARIOUS

FUNCTIONAL BASE LAYER ZIP

SKI, HIKING, OUTDOOR

175GSM MIDWEIGHT JERSEY

BREATHABLE, TEMPERATURE-REGULATING

1/4 ZIP FOR MORE FUNCTIONALITY

FABRIC **ADVANCED WOOL 175** 50% WOOL (MERINO), 50% POLYESTER
CARE **MACHINE WASH MILD PROCESS ≤40°C, TUMBLE DRY AT LOWER TEMPERATURE, IRON ≤150°C**

FIT **SLIM FIT**
SIZES **XS, S, M, L, XL**
PACKAGING **BASE BOX REGULAR**



W TUNDRA175 BANDITO TURTLENECK

FUNCTIONAL BASE LAYER TURTLENECK

SKI, HIKING, OUTDOOR

175GSM MIDWEIGHT JERSEY

BREATHABLE, TEMPERATURE-REGULATING

TIGHT FIT AND TURTLENECK

SNW027670 | 24J

JET BLACK / JET BLACK / WHITE STONE



SNW027670 | 76J

WHITE PEPPER /
JET BLACK / WHITE STONE

| | | | |
|-----------|------------------|--------|---|
| FIT | SLIM FIT | FABRIC | ADVANCED WOOL 175 50% WOOL (MERINO), 50% POLYESTER |
| SIZES | XS, S, M, L, XL | CARE | MACHINE WASH MILD PROCESS ≤40°C, TUMBLE DRY AT LOWER TEMPERATURE, IRON ≤150°C |
| PACKAGING | BASE BOX REGULAR | | |

W TUNDRA220 SEMPLICE BRA

FUNCTIONAL BASE LAYER BRA
LIFESTYLE, HIKING, OUTDOOR
220GSM PONTE ROMA FABRIC
ELASTIC BAND WITH LOGO
COMFORTABLE FEELING ON THE SKIN



SNW021530 | 872
JET BLACK



SNW021530 | W01
BLUEBERRY



SNW021530 | 55F
CASHMERE GREY MELANGE



SNW021530 | 620
FRESH WHITE



SNW021530 | 671
EUCALYPTUS



SNW021530 | X82
WHITE PEPPER

FABRIC **WOOL SUPER STRETCH 32% WOOL (MERINO), 63% POLYESTER, 5% ELASTANE**
CARE **MACHINE WASH MILD PROCESS ≤40°C, TUMBLE DRY AT LOWER TEMPERATURE, IRON LOW ≤110°C**

FIT **SLIM FIT**
SIZES **XS, S, M, L, XL, XXL**
PACKAGING **BASE BOX SMALL**



W TUNDRA175 BOYFRIEND HIPSTER

FUNCTIONAL BASE LAYER HIPSTER

LIFESTYLE, FITNESS, WELLNESS

175GSM MIDWEIGHT ELASTIC JERSEY

ELASTIC WAISTBAND WITH LOGO

COMFORTABLE FEELING ON THE SKIN

SNW021410 | 872
JET BLACK



SNW021410 | X82
WHITE PEPPER



SNW021410 | 671
EUCALYPTUS



SNW021410 | 620
FRESH WHITE



SNW021410 | 55F
CASHMERE GREY MELANGE



SNW021410 | W01
BLUEBERRY

| | |
|-----------|----------------------|
| FIT | SLIM FIT |
| SIZES | XS, S, M, L, XL, XXL |
| PACKAGING | BASE BOX SMALL |

| | |
|--------|---|
| FABRIC | ELASTIC WOOL JERSEY 175 48% WOOL (MERINO), 48% POLYESTER, 4% ELASTANE |
| CARE | MACHINE WASH MILD PROCESS ≤40°C, TUMBLE DRY AT LOWER TEMPERATURE, IRON LOW ≤110°C |

W TUNDRA175 HIPSTER 2-PACK

ELASTIC WOOL JERSEY 175



SNW021550 | D26
JET BLACK / JET BLACK



SNW021550 | Y86
BLUEBERRY / BLUEBERRY



SNW021550 | 82F
CASHMERE GREY MELANGE /
CASHMERE GREY MELANGE

FUNCTIONAL BASE LAYER HIPSTER

LIFESTYLE, FITNESS, WELLNESS

175GSM MIDWEIGHT ELASTIC JERSEY

ELASTIC WAISTBAND WITH LOGO

COMFORTABLE FEELING ON THE SKIN

FABRIC **ELASTIC WOOL JERSEY 175** 48% WOOL (MERINO), 48% POLYESTER, 4% ELASTANE
CARE **MACHINE WASH MILD PROCESS ≤40°C, TUMBLE DRY AT LOWER TEMPERATURE, IRON LOW ≤110°C**

FIT **SLIM FIT**
SIZES **XS, S, M, L, XL, XXL**
PACKAGING **BASE BOX REGULAR**

W TUNDRA175 THONG

ELASTIC WOOL JERSEY 175



SNW021490 | 872
JET BLACK



SNW021490 | W01
BLUEBERRY



SNW021490 | 55F
CASHMERE GREY MELANGE



SNW021490 | 620
FRESH WHITE



SNW021490 | 63I
STORMY WEATHER

FUNCTIONAL BASE LAYER SLIP

LIFESTYLE, FITNESS, WELLNESS

175GSM MIDWEIGHT JERSEY

ELASTIC AND ELEGANT DESIGN

COMFORTABLE FEELING ON THE SKIN

FABRIC **ELASTIC WOOL JERSEY 175** 48% WOOL (MERINO), 48% POLYESTER, 4% ELASTANE
CARE **MACHINE WASH MILD PROCESS ≤40°C, TUMBLE DRY AT LOWER TEMPERATURE, IRON LOW ≤110°C**

FIT **SLIM FIT**
SIZES **XS, S, M, L, XL, XXL**
PACKAGING **BASE BOX SMALL**

W TUNDRA175 SLIP

ELASTIC WOOL JERSEY 175



SNW024450 | W01
BLUEBERRY



SNW024450 | 872
JET BLACK

FIT **SLIM FIT**
SIZES **XS, S, M, L, XL**
PACKAGING **BASE BOX SMALL**

FABRIC **ELASTIC WOOL JERSEY 175** 48% WOOL (MERINO), 48% POLYESTER, 4% ELASTANE
CARE **MACHINE WASH MILD PROCESS ≤40°C, TUMBLE DRY AT LOWER TEMPERATURE, IRON LOW ≤110°C**

W TUNDRA175 SHORT TIGHT

ELASTIC WOOL JERSEY 175



SNW021510 | 620
FRESH WHITE



SNW021510 | 55F
CASHMERE GREY MELANGE



SNW021510 | W01
BLUEBERRY



SNW021510 | 872
JET BLACK

FIT **SLIM FIT**
SIZES **XS, S, M, L, XL, XXL**
PACKAGING **BASE BOX REGULAR**

FABRIC **ELASTIC WOOL JERSEY 175** 48% WOOL (MERINO), 48% POLYESTER, 4% ELASTANE
CARE **MACHINE WASH MILD PROCESS ≤40°C, TUMBLE DRY AT LOWER TEMPERATURE, IRON LOW ≤110°C**

W TUNDRA175 COMFY TIGHT

ELASTIC WOOL JERSEY 175



SNW020470 | 872
JET BLACK

FIT **SLIM FIT**
SIZES **XS, S, M, L, XL, XXL**
PACKAGING **BASE BOX REGULAR**

FABRIC **ELASTIC WOOL JERSEY 175** 48% WOOL (MERINO), 48% POLYESTER, 4% ELASTANE
CARE **MACHINE WASH MILD PROCESS ≤40°C, TUMBLE DRY AT LOWER TEMPERATURE, IRON LOW ≤110°C**

W TUNDRA175 TIGHT 3/4

FUNCTIONAL BASE LAYER TIGHTS

LIFESTYLE, HIKING, OUTDOOR

175GSM MIDWEIGHT JERSEY

BREATHABLE, TEMPERATURE-REGULATING

3/4 LEG



SNW020410 | 872
JET BLACK



SNW020410 | W01
BLUEBERRY



SNW020410 | 55F
CASHMERE GREY MELANGE



SNW020410 | 620
FRESH WHITE



SNW020410 | 671
EUCALYPTUS



SNW020410 | X82
WHITE PEPPER

FABRIC **ELASTIC WOOL JERSEY 175** 48% WOOL (MERINO), 48% POLYESTER, 4% ELASTANE
CARE **MACHINE WASH MILD PROCESS ≤40°C, TUMBLE DRY AT LOWER TEMPERATURE, IRON LOW ≤110°C**

FIT **SLIM FIT**
SIZES **XS, S, M, L, XL, XXL**
PACKAGING **BASE BOX REGULAR**



W TUNDRA175 TIGHT

FUNCTIONAL BASE LAYER TIGHTS

LIFESTYLE, HIKING, OUTDOOR

175GSM MIDWEIGHT JERSEY

BREATHABLE, TEMPERATURE-REGULATING

LONG LEG

SNW020430 | 872
JET BLACK



SNW020430 | X82
WHITE PEPPER



SNW020430 | 671
EUCALYPTUS



SNW020430 | 620
FRESH WHITE



SNW020430 | 55F
CASHMERE GREY MELANGE



SNW020430 | W01
BLUEBERRY

| | |
|-----------|----------------------|
| FIT | SLIM FIT |
| SIZES | XS, S, M, L, XL, XXL |
| PACKAGING | BASE BOX REGULAR |

| | |
|--------|---|
| FABRIC | ELASTIC WOOL JERSEY 175 48% WOOL (MERINO), 48% POLYESTER, 4% ELASTANE |
| CARE | MACHINE WASH MILD PROCESS ≤40°C, TUMBLE DRY AT LOWER TEMPERATURE, IRON LOW ≤110°C |

W ARCTIC230 ZIP 1/4

ADVANCED WOOL 230



SNW021570 | 872
JET BLACK

| |
|------------------------------------|
| FUNCTIONAL BASE LAYER ZIP |
| LIFESTYLE, HIKING, OUTDOOR |
| 230GSM HEAVYWEIGHT JERSEY |
| BREATHABLE, TEMPERATURE-REGULATING |
| COMFORTABLE FEELING ON THE SKIN |

FABRIC **ADVANCED WOOL 230** 50% WOOL (MERINO), 50% POLYESTER
CARE **MACHINE WASH MILD PROCESS ≤40°C, TUMBLE DRY AT LOWER TEMPERATURE, IRON ≤150°C**

FIT **SLIM FIT**
SIZES **XS, S, M, L, XL, XXL**
PACKAGING **BASE BOX REGULAR**

W ARCTIC230 LS

ADVANCED WOOL 230



SNW021590 | 872
JET BLACK

| |
|----------------------------------|
| FUNCTIONAL BASE LAYER LONGSLEEVE |
| LIFESTYLE, HIKING, OUTDOOR |
| 230GSM HEAVYWEIGHT JERSEY |
| TIGHT FIT AND ROUND NECKLINE |
| COMFORTABLE FEELING ON THE SKIN |

FABRIC **ADVANCED WOOL 230** 50% WOOL (MERINO), 50% POLYESTER
CARE **MACHINE WASH MILD PROCESS ≤40°C, TUMBLE DRY AT LOWER TEMPERATURE, IRON ≤150°C**

FIT **SLIM FIT**
SIZES **XS, S, M, L, XL, XXL**
PACKAGING **BASE BOX REGULAR**

W ARCTIC230 TIGHT 3/4

ELASTIC WOOL JERSEY 230

**SNW021610 | 872**

JET BLACK

FUNCTIONAL BASE LAYER TIGHTS

LIFESTYLE, HIKING, OUTDOOR

230GSM HEAVYWEIGHT ELASTIC JERSEY

3/4 LENGTH, ENDS OVER SKI BOOT

ELASTICATED WAISTBAND WITH LOGO

FIT SLIM FIT

SIZES XS, S, M, L, XL, XXL

PACKAGING BASE BOX REGULAR

FABRIC

ELASTIC WOOL JERSEY 230 47% WOOL (MERINO), 47% POLYESTER, 6% ELASTANE

CARE

MACHINE WASH MILD PROCESS ≤40°C, TUMBLE DRY AT LOWER TEMPERATURE, IRON LOW ≤110°C**W ARCTIC230 TIGHT**

ELASTIC WOOL JERSEY 230

**SNW021630 | 872**

JET BLACK

FUNCTIONAL BASE LAYER TIGHTS

LIFESTYLE, HIKING, OUTDOOR

230GSM HEAVYWEIGHT ELASTIC JERSEY

BREATHABLE, TEMPERATURE-REGULATING

ELASTICATED WAISTBAND WITH LOGO

FIT SLIM FIT

SIZES XS, S, M, L, XL, XXL

PACKAGING BASE BOX REGULAR

FABRIC

ELASTIC WOOL JERSEY 230 47% WOOL (MERINO), 47% POLYESTER, 6% ELASTANE

CARE

MACHINE WASH MILD PROCESS ≤40°C, TUMBLE DRY AT LOWER TEMPERATURE, IRON LOW ≤110°C

super.natural

W B HOT TURTLENECK



W B HOT TURTLENECK

WOOL SUPER BRUSH



SNW023770 | X82
WHITE PEPPER



SNW023770 | W01
BLUEBERRY



SNW023770 | 872
JET BLACK

FUNCTIONAL BASE LAYER TIGHTS

SKI, OUTDOOR, LIFESTYLE

255GSM COSY FLEECE

WARMING STAND-UP COLLAR WITH ZIP

COSY, ELEGANT AND CLASSY DESIGN

FIT SLIM FIT

SIZES XS, S, M, L, XL

PACKAGING BIODEGRADABLE
CORNSTARCH BAGFABRIC
CAREWOOL SUPER BRUSH 30% WOOL (MERINO), 67% POLYESTER, 3% ELASTANE
MACHINE WASH MILD PROCESS ≤40°C, DO NOT TUMBLE DRY, IRON LOW ≤110°C**W B HOT TIGHTS**

WOOL SUPER BRUSH



SNW023790 | X82
WHITE PEPPER



SNW023790 | W01
BLUEBERRY



SNW023790 | 872
JET BLACK

FUNCTIONAL BASE LAYER TIGHTS

SKI, OUTDOOR, LIFESTYLE

255GSM COSY FLEECE

COMFORTABLE FEELING ON THE SKIN

COSY, ELEGANT AND CLASSY DESIGN

FIT SLIM FIT

SIZES XS, S, M, L, XL

PACKAGING BIODEGRADABLE
CORNSTARCH BAGFABRIC
CAREWOOL SUPER BRUSH 30% WOOL (MERINO), 67% POLYESTER, 3% ELASTANE
MACHINE WASH MILD PROCESS ≤40°C, DO NOT TUMBLE DRY, IRON LOW ≤110°C



INTRODUCING OUR

BIO SUPER.WOOL BASE LAYER

Sustainability starts with your first layer. The new BIO SUPER.WOOL base collection redefines functional underwear by incorporating an innovative blend of 50% mulesing-free merino wool and 50% PrimaLoft® BIO™. This unique combination provides cozy warmth, excellent moisture management, and outstanding comfort — ideal for sports and winter activities. Plus, this collection is 100% biodegradable, produces zero microplastics, and significantly reduces CO₂ emissions. Experience sustainability right against your skin for a more responsible adventure!



women



W BIO BASE TEE

BIO SUPER.WOOL JERSEY



SNW026470 | 872
JET BLACK



SNW026470 | 55F
CASHMERE GREY MELANGE

BIO SUPER.WOOL BASE TEE

SKI, HIKING, OUTDOOR

175GSM MIDWEIGHT JERSEY

100% BIODEGRADABLE, NO MICROPLASTIC

PATTERN LIKE BESTSELLER BASE TEE

FABRIC **BIO SUPER.WOOL JERSEY** 50% WOOL (MERINO), 50% POLYESTER PRIMALOFT® BIO™
CARE **MACHINE WASH MILD PROCESS ≤40°C, TUMBLE DRY AT LOWER TEMPERATURE, IRON LOW ≤110°C**

FIT **SLIM FIT**
SIZES **XS, S, M, L, XL**
PACKAGING **BASE BOX REGULAR**

W BIO BASE LS

BIO SUPER.WOOL JERSEY



SNW025630 | 872
JET BLACK



SNW025630 | 55F
CASHMERE GREY MELANGE

BIO SUPER.WOOL BASE LAYER LONGSLEEVE

LIFESTYLE, SKI, OUTDOOR

175GSM MIDWEIGHT JERSEY

100% BIODEGRADABLE, NO MICROPLASTIC

QUICK DRY, NO ODOR, UV PROTECTION

FABRIC **BIO SUPER.WOOL JERSEY** 50% WOOL (MERINO), 50% POLYESTER PRIMALOFT® BIO™
CARE **MACHINE WASH MILD PROCESS ≤40°C, TUMBLE DRY AT LOWER TEMPERATURE, IRON LOW ≤110°C**

FIT **SLIM FIT**
SIZES **XS, S, M, L, XL, XXL**
PACKAGING **BASE BOX REGULAR**



SNW025650 | 872
JET BLACK

W BIO BASE TIGHTS

| |
|-------------------------------------|
| BIO SUPER.WOOL BASE TIGHTS |
| LIFESTYLE, SKI, OUTDOOR |
| 175GSM MIDWEIGHT ELASTIC JERSEY |
| 100% BIODEGRADABLE, NO MICROPLASTIC |
| QUICK DRY, NO ODOR, UV PROTECTION |



SNW025650 | 55F
CASHMERE GREY MELANGE

| | | | |
|-----------|-----------------------------|--------|--|
| FIT | SLIM FIT | FABRIC | BIO ELASTIC WOOL JERSEY 175 47% WOOL (MERINO), 48% POLYESTER PRIMALOFT® BIO™, |
| SIZES | XS, S, M, L, XL, XXL | | 5% ELASTANE |
| PACKAGING | BASE BOX REGULAR | CARE | MACHINE WASH MILD PROCESS ≤40°C, TUMBLE DRY AT LOWER TEMPERATURE, IRON LOW ≤110°C |

super.natural

BIO BASE HIPSTER & BIO SEMPLICE BRA



W BIO SEMPLICE BRA

BIO ELASTIC WOOL JERSEY 175



SNW026950 | 55F
CASHMERE GREY MELANGE



SNW026950 | 872
JET BLACK

BIO SUPER.WOOL BASE BRA

FOR EVERYDAY

175GSM MIDWEIGHT ELASTIC JERSEY

100% BIODEGRADABLE, NO MICROPLASTIC

PATTERN LIKE BESTSELLER BASE BRA

FIT **SLIM FIT**
SIZES **XS, S, M, L, XL**
PACKAGING **BASE BOX REGULAR**

FABRIC **BIO ELASTIC WOOL JERSEY 175** 47% WOOL (MERINO), 48% POLYESTER PRIMALOFT® BIO™, 5% ELASTANE
CARE **MACHINE WASH MILD PROCESS ≤40°C, TUMBLE DRY AT LOWER TEMPERATURE, IRON LOW ≤110°C**

W BIO BASE HIPSTER

BIO ELASTIC WOOL JERSEY 175



SNW026870 | 55F
CASHMERE GREY MELANGE



SNW026870 | 872
JET BLACK

BIO SUPER.WOOL BASE HIPSTER

FOR EVERYDAY

175GSM MIDWEIGHT ELASTIC JERSEY

100% BIODEGRADABLE, NO MICROPLASTIC

PATTERN LIKE BESTSELLER BASE HIPSTER

FIT **SLIM FIT**
SIZES **XS, S, M, L, XL**
PACKAGING **BASE BOX REGULAR**

FABRIC **BIO ELASTIC WOOL JERSEY 175** 47% WOOL (MERINO), 48% POLYESTER PRIMALOFT® BIO™, 5% ELASTANE
CARE **MACHINE WASH MILD PROCESS ≤40°C, TUMBLE DRY AT LOWER TEMPERATURE, IRON LOW ≤110°C**



INTRODUCING OUR

MERINO.LUX BASE LAYER

Discover the luxurious MERINO.LUX collection, designed for those who seek elegance without compromising on performance. This premium baselayer line is crafted from an exceptional blend of 36% mulesing-free merino wool and 18% Lycra, providing a flawless fit and a stunning sheen. Enhanced with 46% high-performance polyester from Trevira, this collection ensures unparalleled comfort and style. Ideal for fitted silhouettes, the MERINO.LUX Collection delivers the perfect fusion of luxury and functionality for every occasion.



W LUX BASE TEE



LUXURY BASE LAYER TEE

LIFESTYLE, SKI, OUTDOOR

220GSM PONTE ROMA FABRIC

LYCRA FOR MORE PERFORMANCE

PATTERN LIKE BESTSELLER BASE TEE

SNW025510 | 872

JET BLACK

| | |
|--------|--|
| FABRIC | MERINO.LUX 36% WOOL (MERINO), 46% POLYESTER, 18% LYCRA |
| CARE | MACHINE WASH MILD PROCESS ≤40°C, TUMBLE DRY AT LOWER TEMPERATURE, IRON LOW ≤110°C |

| | |
|-----------|------------------------|
| FIT | SLIM FIT |
| SIZES | XS, S, M, L, XL |
| PACKAGING | BLACK BASE BOX |

W LUX BASE LS

MERINO.LUX



SNW025530 | 872
JET BLACK

LUXURY BASE LAYER LONGSLEEVE

LIFESTYLE, SKI, OUTDOOR

220GSM PONTE ROMA FABRIC

LYCRA FOR MORE PERFORMANCE

PATTERN LIKE BESTSELLER BASE LS

FIT **SLIM FIT**
SIZES **XS, S, M, L, XL**
PACKAGING **BLACK BASE BOX**

FABRIC **MERINO.LUX 36% WOOL (MERINO), 46% POLYESTER, 18% LYCRA**
CARE **MACHINE WASH MILD PROCESS ≤40°C, TUMBLE DRY AT LOWER TEMPERATURE, IRON LOW ≤110°C**

W LUX BASE TIGHT

MERINO.LUX



SNW025490 | 872
JET BLACK

LUXURY BASE LAYER TIGHTS

LIFESTYLE, SKI, OUTDOOR

220GSM PONTE ROMA FABRIC

LYCRA FOR MORE PERFORMANCE

PATTERN LIKE BESTSELLER BASE TIGHT

FIT **SLIM FIT**
SIZES **XS, S, M, L, XL**
PACKAGING **BLACK BASE BOX**

FABRIC **MERINO.LUX 36% WOOL (MERINO), 46% POLYESTER, 18% LYCRA**
CARE **MACHINE WASH MILD PROCESS ≤40°C, TUMBLE DRY AT LOWER TEMPERATURE, IRON LOW ≤110°C**



M

super.natural

MEN

BASE LAYER

Merino sheep possess a light, ultra-breathable coat that shields them from the scorching summer sun. As winter arrives, they naturally grow an extra layer of wool, enabling them to endure very cold temperatures. Inspired by nature's adaptability, **super.natural** offers a range of merino-mix base layers in various styles: short and long sleeves, pants, and different fabric weights – all crafted to regulate your body's temperature, regardless of weather conditions or climate zones.

GRAMMAGES



■ SIERRA 140

The Sierra Nevada, characterized by gentle warmth and scorching heat, inspires our **SIERRA 140** collection. Crafted from **140g lightweight fabric**, these base layers are exceptionally breathable, odor-resistant, and moisture-resistant.



■ TUNDRA 175

Our **TUNDRA 175** collection is a versatile companion year-round. Whether you're hiking, skiing, or simply enjoying the outdoors, the **175g midweight fiber** ensures pleasantly light comfort in any environment.



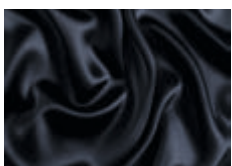
■ ARCTIC 230

For harsh winter conditions with icy temperatures, our **ARCTIC 230** collection offers unparalleled warmth and protection. Our **230g heavyweight fiber** delivers dependable insulation even in the most extreme cold.



■ BASE+ 255

For those who feel the chill even more – our **Base+** delivers unmatched warmth and softness on the coldest days. Crafted with our innovative **WOOL SUPER.BRUSH** fabric, its brushed inner layer offers extra insulation and comfort.



■ MERINO.LUX

MERINO.LUX stands for elegant comfort. Crafted from a premium **220g blend of finest merino wool (16.5µ)** and **Lycra**, it offers a flattering fit. Ideal for fitted silhouettes and elevated baselayers: soft and stretchy with a touch of elegance.

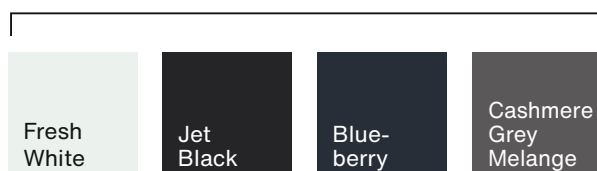


■ BIO BASE

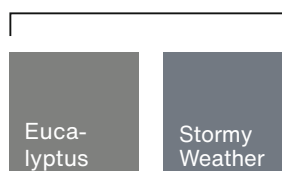
BIO BASE is our most natural take on performance wear. Made from **100% natural fibers**, this fabric is breathable, soft, and naturally temperature-regulating. Free from synthetics, it is ideal for conscious layering.

COLORS

CARRY-OVER



SEASONAL COLOURS MEN



FIT GUIDE MEN



M BASE TANK
■ **SIERRA 140**



M BASE TEE
■ **SIERRA 140**
■ **MERINO.LUX**
■ **BIO BASE**



M BASE V-NECK TEE
■ **SIERRA 140**



M BASE 1/4 ZIP TEE
■ **TUNDRA 175**



M BASE LS
■ **SIERRA 140**
■ **TUNDRA 175**
■ **ARCTIC 230**
■ **MERINO.LUX**
■ **BIO BASE**



M BASE TURTLE NECK
■ **TUNDRA 175**
■ **ARCTIC 230**
■ **BASE+**



M BASE 1/4 ZIP
■ **TUNDRA 175**
■ **ARCTIC 230**



M BASE BOXER
■ **TUNDRA 175**
■ **BIO BASE**



M BASE SHORT TIGHT
■ **TUNDRA 175**



M BASE SLIP
■ **TUNDRA 175**



M BASE 3/4 TIGHT
■ **TUNDRA 175**
■ **ARCTIC 230**



M BASE TIGHT
■ **TUNDRA 175**
■ **ARCTIC 230**
■ **BASE+**
■ **MERINO.LUX**
■ **BIO BASE**



M SIERRA140 TANK

ADVANCED WOOL 140



SNM019420 | 872
JET BLACK



SNM019420 | W01
BLUEBERRY



SNM019420 | 620
FRESH WHITE



SNM019420 | 671
EUCALYPTUS



SNM019420 | 55F
CASHMERE GREY
MELANGE



SNM019420 | 63I
STORMY WEATHER

FUNCTIONAL BASE LAYER TANKTOP

SKI, HIKING, OUTDOOR

140GSM LIGHTWEIGHT JERSEY

COMFORTABLE FEELING ON THE SKIN

QUICK DRY, NO ODOR, UV PROTECTION

FABRIC ADVANCED WOOL 140 50% WOOL (MERINO), 50% POLYESTER
CARE MACHINE WASH MILD PROCESS ≤40°C, TUMBLE DRY AT LOWER TEMPERATURE, IRON ≤150°C

FIT SLIM FIT
SIZES S, M, L, XL, XXL, XXXL
PACKAGING BASE BOX SMALL

M SIERRA140 V NECK

ADVANCED WOOL 140



SNM019880 | 872
JET BLACK



SNM019880 | W01
BLUEBERRY



SNM019880 | 620
FRESH WHITE



SNM019880 | 671
EUCALYPTUS



SNM019880 | 55F
CASHMERE GREY
MELANGE



SNM019880 | 63I
STORMY WEATHER

FUNCTIONAL BASE LAYER T-SHIRT

SKI, HIKING, OUTDOOR

140GSM LIGHTWEIGHT JERSEY

COMFORTABLE FEELING ON THE SKIN

V NECKLINE

FABRIC ADVANCED WOOL 140 50% WOOL (MERINO), 50% POLYESTER
CARE MACHINE WASH MILD PROCESS ≤40°C, TUMBLE DRY AT LOWER TEMPERATURE, IRON ≤150°C

FIT SLIM FIT
SIZES S, M, L, XL, XXL, XXXL
PACKAGING BASE BOX REGULAR



M SIERRA140 TEE

| |
|---------------------------------|
| FUNCTIONAL BASE LAYER T-SHIRT |
| SKI, HIKING, OUTDOOR |
| 140GSM LIGHTWEIGHT JERSEY |
| COMFORTABLE FEELING ON THE SKIN |
| ROUND NECKLINE |

SNM019400 | 872
JET BLACK



SNM019400 | 671
EUCALYPTUS



SNM019400 | 631
STORMY WEATHER



SNM019400 | 620
FRESH WHITE



SNM019400 | 55F
CASHMERE GREY MELANGE



SNM019400 | W01
BLUEBERRY

| | | | |
|-----------|------------------------|--------|---|
| FIT | SLIM FIT | FABRIC | ADVANCED WOOL 140 50% WOOL (MERINO), 50% POLYESTER |
| SIZES | S, M, L, XL, XXL, XXXL | CARE | MACHINE WASH MILD PROCESS ≤40°C, TUMBLE DRY AT LOWER TEMPERATURE, IRON ≤150°C |
| PACKAGING | BASE BOX REGULAR | | |

NEW

STITCHED

M SIERRA140 POCKET ZIP 1/4

1/4 ZIP BASE LAYER WITH NYLON ZIP POCKET

TRAINING, OUTDOOR, SKI

140GSM LIGHTWEIGHT JERSEY

BREATHABLE, TEMPERATURE-REGULATING

EMBROIDERY BOX LOGO



SNM023680 | 872

JET BLACK



SNM023680 | W01
BLUEBERRY



SNM023680 | 671
EUCALYPTUS

FABRIC **ADVANCED WOOL 140** 50% WOOL (MERINO), 50% POLYESTER
LIGHT TECHNO BI-ELASTIC 78% POLYESTER, 22% ELASTANE
 CARE **MACHINE WASH MILD PROCESS ≤30°C, DO NOT TUMBLE DRY, DO NOT IRON**

FIT **SLIM FIT**
 SIZES **S, M, L, XL, XXL**
 PACKAGING **BASE BOX REGULAR**



M SIERRA140 LS

FUNCTIONAL BASE LAYER LONGSLEEVE

SKI, HIKING, OUTDOOR

140GSM LIGHTWEIGHT JERSEY

BREATHABLE, TEMPERATURE-REGULATING

QUICK DRY, NO ODOR, UV PROTECTION

SNM022180 | 872
JET BLACK



SNM022180 | 671
EUCALYPTUS



SNM022180 | 631
STORMY WEATHER



SNM022180 | 620
FRESH WHITE



SNM022180 | 55F
CASHMERE GREY MELANGE



SNM022180 | W01
BLUEBERRY

| | | | |
|-----------|------------------------|--------|---|
| FIT | SLIM FIT | FABRIC | ADVANCED WOOL 140 50% WOOL (MERINO), 50% POLYESTER |
| SIZES | S, M, L, XL, XXL, XXXL | CARE | MACHINE WASH MILD PROCESS ≤40°C, TUMBLE DRY AT LOWER TEMPERATURE, IRON ≤150°C |
| PACKAGING | BASE BOX REGULAR | | |

super.natural

M TUNDRA175 ZIP 1/4





M TUNDRA175 ZIP 1/4 SS

FUNCTIONAL BASE LAYER SHORT SLEEVE

LIFESTYLE, FITNESS, OUTDOOR

175GSM MIDWEIGHT JERSEY

WITH A HIGH ZIPPED COLLAR

COMFORTABLE FEELING ON THE SKIN

SNM021780 | 872
JET BLACK



SNM021780 | 671
EUCALYPTUS



SNM021780 | 631
STORMY WEATHER



SNM021780 | 620
FRESH WHITE



SNM021780 | 55F
CASHMERE GREY MELANGE



SNM021780 | W01
BLUEBERRY

| | |
|-----------|------------------|
| FIT | SLIM FIT |
| SIZES | S, M, L, XL, XXL |
| PACKAGING | BASE BOX REGULAR |

| | |
|--------|---|
| FABRIC | ADVANCED WOOL 175 50% WOOL (MERINO), 50% POLYESTER |
| CARE | MACHINE WASH MILD PROCESS ≤40°C, TUMBLE DRY AT LOWER TEMPERATURE, IRON ≤150°C |

M TUNDRA175 LS

FUNCTIONAL BASE LAYER LONGSLEEVE

SKI, HIKING, OUTDOOR

175GSM MIDWEIGHT JERSEY

BREATHABLE, TEMPERATURE-REGULATING

TIGHT FIT AND ROUND NECKLINE



SNM019340 | 872
JET BLACK



SNM019340 | W01
BLUEBERRY



SNM019340 | 55F
CASHMERE GREY MELANGE



SNM019340 | 620
FRESH WHITE



SNM019340 | 63I
STORMY WEATHER



SNM019340 | 67I
EUCALYPTUS

FABRIC **ADVANCED WOOL 175** 50% WOOL (MERINO), 50% POLYESTER
CARE **MACHINE WASH MILD PROCESS ≤40°C, TUMBLE DRY AT LOWER TEMPERATURE, IRON ≤150°C**

FIT **SLIM FIT**
SIZES **S, M, L, XL, XXL, XXXL**
PACKAGING **BASE BOX REGULAR**

M TUNDRA175 TURTLENECK

ADVANCED WOOL 175



SNM019360 | 620
FRESH WHITE



SNM019360 | 55F
CASHMERE GREY MELANGE



SNM019360 | W01
BLUEBERRY



SNM019360 | 872
JET BLACK

FUNCTIONAL BASE TURTLENECK

SKI, HIKING, OUTDOOR

175GSM MIDWEIGHT JERSEY

BREATHABLE, TEMPERATURE-REGULATING

TIGHT FIT AND TURTLENECK

FIT SLIM FIT
SIZES S, M, L, XL, XXL, XXXL
PACKAGING BASE BOX REGULAR

FABRIC ADVANCED WOOL 175 50% WOOL (MERINO), 50% POLYESTER
CARE MACHINE WASH MILD PROCESS ≤40°C, TUMBLE DRY AT LOWER TEMPERATURE, IRON ≤150°C

M TUNDRA175 ZIP 1/4

ADVANCED WOOL 175



SNM019380 | 620
FRESH WHITE



SNM019380 | 55F
CASHMERE GREY MELANGE



SNM019380 | W01
BLUEBERRY



SNM019380 | 872
JET BLACK

FUNCTIONAL BASE LAYER ZIP

SKI, HIKING, OUTDOOR

175GSM MIDWEIGHT JERSEY

BREATHABLE, TEMPERATURE-REGULATING

1/4 ZIP FOR MORE FUNCTIONALITY

FIT SLIM FIT
SIZES S, M, L, XL, XXL, XXXL
PACKAGING BASE BOX REGULAR

FABRIC ADVANCED WOOL 175 50% WOOL (MERINO), 50% POLYESTER
CARE MACHINE WASH MILD PROCESS ≤40°C, TUMBLE DRY AT LOWER TEMPERATURE, IRON ≤150°C

M TUNDRA175 FROSTY TURTLENECK

ADVANCED WOOL 175

NEW



SNM023940 | 989

JET BLACK / FRESH WHITE

FUNCTIONAL BASE TURTLENECK

SKI, HIKING, OUTDOOR

175GSM MIDWEIGHT JERSEY

BREATHABLE, TEMPERATURE-REGULATING

TIGHT FIT AND TURTLENECK

FABRIC **ADVANCED WOOL 175** 50% WOOL (MERINO), 50% POLYESTER
CARE **MACHINE WASH MILD PROCESS ≤40°C, TUMBLE DRY AT LOWER TEMPERATURE, IRON ≤150°C**

FIT **SLIM FIT**
SIZES **S, M, L, XL, XXL, XXXL**
PACKAGING **BASE BOX REGULAR**

M TUNDRA175 TONI TURTLENECK

ADVANCED WOOL 175

NEW



SNM023960 | 63K

STORMY WEATHER / VAPOR GREY

FUNCTIONAL BASE TURTLENECK

SKI, HIKING, OUTDOOR

175GSM MIDWEIGHT JERSEY

BREATHABLE, TEMPERATURE-REGULATING

TIGHT FIT AND TURTLENECK

FABRIC **ADVANCED WOOL 175** 50% WOOL (MERINO), 50% POLYESTER
CARE **MACHINE WASH MILD PROCESS ≤40°C, TUMBLE DRY AT LOWER TEMPERATURE, IRON ≤150°C**

FIT **SLIM FIT**
SIZES **S, M, L, XL, XXL, XXXL**
PACKAGING **BASE BOX REGULAR**

M TUNDRA175 FROSTY 1/4 ZIP

ADVANCED WOOL 175

NEW

**SNM023820 | 57J**

EUCALYPTUS / VAPOR GREY

FUNCTIONAL BASE LAYER ZIP

SKI, HIKING, OUTDOOR

175GSM MIDWEIGHT JERSEY

BREATHABLE, TEMPERATURE-REGULATING

1/4 ZIP FOR MORE FUNCTIONALITY

FIT SLIM FIT

SIZES S, M, L, XL, XXL, XXXL

PACKAGING BASE BOX REGULAR

FABRIC
CARE**ADVANCED WOOL 175** 50% WOOL (MERINO), 50% POLYESTER

MACHINE WASH MILD PROCESS ≤40°C, TUMBLE DRY AT LOWER TEMPERATURE, IRON ≤150°C

M TUNDRA175 TONI 1/4 ZIP

ADVANCED WOOL 175

NEW

**SNM022980 | 58J**

STORMY WEATHER / BLUEBERRY / F. GREY

FUNCTIONAL BASE LAYER ZIP

SKI, HIKING, OUTDOOR

175GSM MIDWEIGHT JERSEY

BREATHABLE, TEMPERATURE-REGULATING

1/4 ZIP FOR MORE FUNCTIONALITY

FIT SLIM FIT

SIZES S, M, L, XL, XXL, XXXL

PACKAGING BASE BOX REGULAR

FABRIC
CARE**ADVANCED WOOL 175** 50% WOOL (MERINO), 50% POLYESTER

MACHINE WASH MILD PROCESS ≤40°C, TUMBLE DRY AT LOWER TEMPERATURE, IRON ≤150°C

M TUNDRA175 BOXER

FUNCTIONAL BASE LAYER BOXER

SKI, HIKING, OUTDOOR

175GSM MIDWEIGHT ELASTIC JERSEY

BREATHABLE, TEMPERATURE-REGULATING

FLEXIBLE CUT, MOVES WITH YOU



SNM019780 | 872

JET BLACK



SNM019780 | W01
BLUEBERRY



SNM019780 | 55F
CASHMERE GREY MELANGE



SNM019780 | 620
FRESH WHITE



SNM019780 | 63I
STORMY WEATHER



SNM019780 | 67I
EUCALYPTUS

FABRIC **ELASTIC WOOL JERSEY 175** 48% WOOL (MERINO), 48% POLYESTER, 4% ELASTANE
CARE **MACHINE WASH MILD PROCESS ≤40°C, TUMBLE DRY AT LOWER TEMPERATURE, IRON LOW ≤110°C**

FIT
SIZES

SLIM FIT
S, M, L, XL, XXL,
XXXL

PACKAGING

BASE BOX SMALL

M TUNDRA175 BOXER 2-PACK

ELASTIC WOOL JERSEY 175

**SNM019920 | 82F**CASHMERE GREY MELANGE /
CASHMERE GREY MELANGE**SNM019920 | Y86**

BLUEBERRY / BLUEBERRY

**SNM019920 | D26**

JET BLACK / JET BLACK

FUNCTIONAL BASE LAYER BOXER

SKI, HIKING, OUTDOOR

175GSM MIDWEIGHT ELASTIC JERSEY

BREATHABLE, TEMPERATURE-REGULATING

FLEXIBLE CUT, MOVES WITH YOU

| | |
|-----------|------------------------|
| FIT | SLIM FIT |
| SIZES | S, M, L, XL, XXL, XXXL |
| PACKAGING | BASE BOX REGULAR |

| | |
|-------------|--|
| FABRIC CARE | ELASTIC WOOL JERSEY 175 48% WOOL (MERINO), 48% POLYESTER, 4% ELASTANE MACHINE WASH MILD PROCESS ≤40°C, TUMBLE DRY AT LOWER TEMPERATURE, IRON LOW ≤110°C |
|-------------|--|

M TUNDRA175 FROSTY BOXER

ELASTIC WOOL JERSEY 175

NEW

**SNM023920 | 57J**EUCALYPTUS /
VAPOR GREY**SNM023920 | 63K**STORMY WEATHER /
VAPOR GREY**SNM023920 | 989**

JET BLACK / FRESH WHITE

FUNCTIONAL BASE LAYER BOXER

SKI, HIKING, OUTDOOR

175GSM MIDWEIGHT ELASTIC JERSEY

BREATHABLE, TEMPERATURE-REGULATING

FLEXIBLE CUT, MOVES WITH YOU

| | |
|-----------|------------------|
| FIT | SLIM FIT |
| SIZES | S, M, L, XL, XXL |
| PACKAGING | BASE BOX REGULAR |

| | |
|-------------|--|
| FABRIC CARE | ELASTIC WOOL JERSEY 175 48% WOOL (MERINO), 48% POLYESTER, 4% ELASTANE MACHINE WASH MILD PROCESS ≤40°C, TUMBLE DRY AT LOWER TEMPERATURE, IRON LOW ≤110°C |
|-------------|--|

M TUNDRA175 SLIP
ELASTIC WOOL JERSEY 175



SNM021800 | 872
JET BLACK



SNM021800 | W01
BLUEBERRY

| |
|------------------------------------|
| FUNCTIONAL BASE LAYER SLIP |
| SKI, HIKING, OUTDOOR |
| 175GSM MIDWEIGHT ELASTIC JERSEY |
| BREATHABLE, TEMPERATURE-REGULATING |
| QUICK DRY, NO ODOR, UV PROTECTION |

| | |
|--------|---|
| FABRIC | ELASTIC WOOL JERSEY 175 48% WOOL (MERINO), 48% POLYESTER, 4% ELASTANE |
| CARE | MACHINE WASH MILD PROCESS ≤40°C, TUMBLE DRY AT LOWER TEMPERATURE, IRON LOW ≤110°C |

| | |
|-----------|------------------|
| FIT | SLIM FIT |
| SIZES | S, M, L, XL, XXL |
| PACKAGING | BASE BOX SMALL |

M TUNDRA175 SHORT TIGHT
ELASTIC WOOL JERSEY 175



SNM019900 | 872
JET BLACK



SNM019900 | W01
BLUEBERRY



SNM019900 | 55F
CASHMERE GREY MELANGE

| |
|------------------------------------|
| FUNCTIONAL BASE LAYER TIGHTS |
| LIFESTYLE, HIKING, OUTDOOR |
| 175GSM MIDWEIGHT JERSEY |
| BREATHABLE, TEMPERATURE-REGULATING |
| SHORT LEG |

| | |
|--------|---|
| FABRIC | ELASTIC WOOL JERSEY 175 48% WOOL (MERINO), 48% POLYESTER, 4% ELASTANE |
| CARE | MACHINE WASH MILD PROCESS ≤40°C, TUMBLE DRY AT LOWER TEMPERATURE, IRON LOW ≤110°C |

| | |
|-----------|------------------------|
| FIT | SLIM FIT |
| SIZES | S, M, L, XL, XXL, XXXL |
| PACKAGING | BASE BOX REGULAR |

M TUNDRA175 TIGHT 3/4

ELASTIC WOOL JERSEY 175



SNM019800 | 631
STORMY WEATHER



SNM019800 | 55F
CASHMERE GREY MELANGE



SNM019800 | W01
BLUEBERRY



SNM019800 | 671
EUCALYPTUS



SNM019800 | 872
JET BLACK

FUNCTIONAL BASE LAYER TIGHTS

LIFESTYLE, HIKING, OUTDOOR

175GSM MIDWEIGHT JERSEY

BREATHABLE, TEMPERATURE-REGULATING

3/4 LEG

| | |
|-----------|------------------------|
| FIT | SLIM FIT |
| SIZES | S, M, L, XL, XXL, XXXL |
| PACKAGING | BASE BOX REGULAR |

| | |
|--------|---|
| FABRIC | ELASTIC WOOL JERSEY 175 48% WOOL (MERINO), 48% POLYESTER, 4% ELASTANE |
| CARE | MACHINE WASH MILD PROCESS ≤40°C, TUMBLE DRY AT LOWER TEMPERATURE, IRON LOW ≤110°C |

M TUNDRA175 TIGHT

ELASTIC WOOL JERSEY 175



SNM019820 | 631
STORMY WEATHER



SNM019820 | 55F
CASHMERE GREY MELANGE



SNM019820 | W01
BLUEBERRY



SNM019820 | 671
EUCALYPTUS



SNM019820 | 872
JET BLACK

FUNCTIONAL BASE LAYER TIGHTS

LIFESTYLE, HIKING, OUTDOOR

175GSM MIDWEIGHT JERSEY

BREATHABLE, TEMPERATURE-REGULATING

LONG LEG

| | |
|-----------|------------------------|
| FIT | SLIM FIT |
| SIZES | S, M, L, XL, XXL, XXXL |
| PACKAGING | BASE BOX REGULAR |

| | |
|--------|---|
| FABRIC | ELASTIC WOOL JERSEY 175 48% WOOL (MERINO), 48% POLYESTER, 4% ELASTANE |
| CARE | MACHINE WASH MILD PROCESS ≤40°C, TUMBLE DRY AT LOWER TEMPERATURE, IRON LOW ≤110°C |

M ARCTIC230 ZIP 1/4

ADVANCED WOOL 230



SNM019940 | 872
JET BLACK

| |
|------------------------------------|
| FUNCTIONAL BASE LAYER ZIP |
| LIFESTYLE, HIKING, OUTDOOR |
| 230GSM HEAVYWEIGHT JERSEY |
| BREATHABLE, TEMPERATURE-REGULATING |
| COMFORTABLE FEELING ON THE SKIN |

FABRIC **ADVANCED WOOL 230** 50% WOOL (MERINO), 50% POLYESTER
CARE **MACHINE WASH MILD PROCESS ≤40°C, TUMBLE DRY AT LOWER TEMPERATURE, IRON ≤150°C**

FIT **SLIM FIT**
SIZES **S, M, L, XL, XXL, XXXL**
PACKAGING **BASE BOX REGULAR**

M ARCTIC230 LS

ADVANCED WOOL 230



SNM019960 | 872
JET BLACK

| |
|----------------------------------|
| FUNCTIONAL BASE LAYER LONGSLEEVE |
| LIFESTYLE, HIKING, OUTDOOR |
| 230GSM HEAVYWEIGHT JERSEY |
| TIGHT FIT AND ROUND NECKLINE |
| COMFORTABLE FEELING ON THE SKIN |

FABRIC **ADVANCED WOOL 230** 50% WOOL (MERINO), 50% POLYESTER
CARE **MACHINE WASH MILD PROCESS ≤40°C, TUMBLE DRY AT LOWER TEMPERATURE, IRON ≤150°C**

FIT **SLIM FIT**
SIZES **S, M, L, XL, XXL, XXXL**
PACKAGING **BASE BOX REGULAR**

M ARCTIC230 TIGHT 3/4

ELASTIC WOOL JERSEY 230

**SNM019980 | 872**

JET BLACK

FUNCTIONAL BASE LAYER TIGHTS

LIFESTYLE, HIKING, OUTDOOR

230GSM HEAVYWEIGHT ELASTIC JERSEY

3/4 LENGTH, ENDS OVER SKI BOOT

COMFORTABLE FEELING ON THE SKIN

FIT SLIM FIT

SIZES S, M, L, XL, XXL, XXXL

PACKAGING BASE BOX REGULAR

FABRIC CARE

ELASTIC WOOL JERSEY 230 47% WOOL (MERINO), 47% POLYESTER, 6% ELASTANE**MACHINE WASH MILD PROCESS ≤40°C, TUMBLE DRY AT LOWER TEMPERATURE, IRON LOW ≤110°C****M ARCTIC230 TIGHT**

ELASTIC WOOL JERSEY 230

**SNM020000 | 872**

JET BLACK

FUNCTIONAL BASE LAYER TIGHTS

LIFESTYLE, HIKING, OUTDOOR

230GSM HEAVYWEIGHT ELASTIC JERSEY

BREATHABLE, TEMPERATURE-REGULATING

COMFORTABLE FEELING ON THE SKIN

FIT SLIM FIT

SIZES S, M, L, XL, XXL, XXXL

PACKAGING BASE BOX REGULAR

FABRIC CARE

ELASTIC WOOL JERSEY 230 47% WOOL (MERINO), 47% POLYESTER, 6% ELASTANE**MACHINE WASH MILD PROCESS ≤40°C, TUMBLE DRY AT LOWER TEMPERATURE, IRON LOW ≤110°C**

super.natural
BASE⁺



M HOT 6 PACK TURTLENECK

WOOL SUPER BRUSH

**SNM020960 | 872**

JET BLACK

EXTRA WARM FUNCTIONAL BASE LAYER

SKI, OUTDOOR, LIFESTYLE

255GSM COSY FLEECE

WITH COMFORTABLE TURTLENECK

QUICK DRY, NO ODOR, UV PROTECTION

FIT SLIM FIT

SIZES S, M, L, XL, XXL

PACKAGING BASE BOX REGULAR

FABRIC

WOOL SUPER BRUSH 30% WOOL (MERINO), 67% POLYESTER, 3% ELASTANE

CARE

MACHINE WASH MILD PROCESS ≤40°C, DO NOT TUMBLE DRY, IRON LOW ≤110°C

M PIM PANTS

WOOL SUPER BRUSH

**SNM020980 | 872**

JET BLACK

FUNCTIONAL BASE LAYER

SKI, OUTDOOR, LIFESTYLE

255GSM COSY FLEECE

COMFORTABLE FEELING ON THE SKIN

QUICK DRY, NO ODOR, BREATHABLE

FIT SLIM FIT

SIZES S, M, L, XL, XXL

PACKAGING BASE BOX REGULAR

FABRIC

WOOL SUPER BRUSH 30% WOOL (MERINO), 67% POLYESTER, 3% ELASTANE

CARE

MACHINE WASH MILD PROCESS ≤40°C, DO NOT TUMBLE DRY, IRON LOW ≤110°C



INTRODUCING OUR

BIO SUPER.WOOL BASELAYER

Sustainability starts with your first layer. The new BIO SUPER.WOOL base collection redefines functional underwear by incorporating an innovative blend of 50% mulesing-free merino wool and 50% PrimaLoft® BIO™. This unique combination provides cozy warmth, excellent moisture management, and outstanding comfort — ideal for sports and winter activities. Plus, this collection is 100% biodegradable, produces zero microplastics, and significantly reduces CO₂ emissions. Experience sustainability right against your skin for a more responsible adventure!



M BIO BASE TEE

BIO SUPER.WOOL JERSEY



SNM023160 | 872
JET BLACK



SNM023160 | W01
BLUEBERRY



SNM023160 | 55F
CASHMERE GREY MELANGE

BIO SUPER.WOOL BASE TEE

SKI, HIKING, OUTDOOR

175GSM MIDWEIGHT JERSEY

100% BIODEGRADABLE, NO MICROPLASTIC

PATTERN LIKE BESTSELLER BASE TEE

FABRIC **BIO SUPER.WOOL JERSEY** 50% WOOL (MERINO), 50% POLYESTER PRIMALOFT® BIO™
CARE **MACHINE WASH MILD PROCESS ≤40°C, TUMBLE DRY AT LOWER TEMPERATURE, IRON LOW ≤110°C**

FIT **SLIM FIT**
SIZES **S, M, L, XL, XXL**
PACKAGING **BASE BOX REGULAR**

M BIO BASE BOXER

ELASTIC WOOL BIO JERSEY 175



SNM023140 | 872
JET BLACK



SNM023140 | W01
BLUEBERRY



SNM023140 | 55F
CASHMERE GREY MELANGE

BIO SUPER.WOOL BASE BOXER

FOR EVERYDAY

175GSM MIDWEIGHT ELASTIC JERSEY

100% BIODEGRADABLE, NO MICROPLASTIC

PATTERN LIKE BESTSELLER BASE BOXER

FABRIC **ELASTIC WOOL BIO JERSEY 175** 47% WOOL (MERINO), 48% POLYESTER PRIMALOFT® BIO™, 5% ELASTANE
CARE **MACHINE WASH MILD PROCESS ≤40°C, TUMBLE DRY AT LOWER TEMPERATURE, IRON LOW ≤110°C**

FIT **SLIM FIT**
SIZES **S, M, L, XL, XXL**
PACKAGING **BASE BOX SMALL**

M BIO BASE LS

BIO SUPER.WOOL JERSEY



SNM022460 | 55F
CASHMERE GREY MELANGE



SNM022460 | W01
BLUEBERRY



SNM022460 | 872
JET BLACK

BIO SUPER.WOOL BASE LAYER LONGSLEEVE

SKI, HIKING, OUTDOOR

175GSM MIDWEIGHT JERSEY

100% BIODEGRADABLE, NO MICROPLASTIC

PATTERN LIKE BESTSELLER BASE LS

| | |
|-----------|------------------------|
| FIT | SLIM FIT |
| SIZES | S, M, L, XL, XXL, XXXL |
| PACKAGING | BASE BOX REGULAR |

| | |
|--------|---|
| FABRIC | BIO SUPER.WOOL JERSEY 50% WOOL (MERINO), 50% POLYESTER PRIMALOFT® BIO™ |
| CARE | MACHINE WASH MILD PROCESS ≤40°C, TUMBLE DRY AT LOWER TEMPERATURE, IRON LOW ≤110°C |

M BIO BASE TIGHTS

ELASTIC WOOL BIO JERSEY 175



SNM022480 | 55F
CASHMERE GREY MELANGE



SNM022480 | W01
BLUEBERRY



SNM022480 | 872
JET BLACK

BIO SUPER.WOOL BASE TIGHTS

SKI, HIKING, OUTDOOR

175GSM MIDWEIGHT ELASTIC JERSEY

100% BIODEGRADABLE, NO MICROPLASTIC

PATTERN LIKE BESTSELLER BASE TIGHT

| | |
|-----------|------------------------|
| FIT | SLIM FIT |
| SIZES | S, M, L, XL, XXL, XXXL |
| PACKAGING | BASE BOX REGULAR |

| | |
|--------|---|
| FABRIC | ELASTIC WOOL BIO JERSEY 175 47% WOOL (MERINO), 48% POLYESTER PRIMALOFT® BIO™, 5% ELASTANE |
| CARE | MACHINE WASH MILD PROCESS ≤40°C, TUMBLE DRY AT LOWER TEMPERATURE, IRON LOW ≤110°C |



INTRODUCING OUR

MERINO.LUX

Discover the luxurious MERINO.LUX collection, designed for those who seek elegance without compromising on performance. This premium baselayer line is crafted from an exceptional blend of 36% mulesing-free merino wool and 18% Lycra, providing a flawless fit and a stunning sheen. Enhanced with 46% high-performance polyester from Trevira, this collection ensures unparalleled comfort and style. Ideal for fitted silhouettes, the MERINO.LUX Collection delivers the perfect fusion of luxury and functionality for every occasion.



M LUX BASE TEE

MERINO.LUX



SNM022400 | 872
JET BLACK

| |
|----------------------------------|
| LUXURY BASE LAYER TEE |
| LIFESTYLE, SKI, OUTDOOR |
| 220GSM PONTE ROMA FABRIC |
| LYCRA FOR MORE PERFORMANCE |
| PATTERN LIKE BESTSELLER BASE TEE |

FABRIC **MERINO.LUX** 36% WOOL (MERINO), 46% POLYESTER, 18% LYCRA
CARE **MACHINE WASH MILD PROCESS ≤40°C, TUMBLE DRY AT LOWER TEMPERATURE, IRON LOW ≤110°C**

FIT **SLIM FIT**
SIZES **S, M, L, XL, XXL**
PACKAGING **BLACK BASE BOX**

M LUX BASE BOXER

MERINO.LUX



SNM022380 | 872
JET BLACK

| |
|------------------------------------|
| LUXURY BASE LAYER BOXER |
| LIFESTYLE, SKI, OUTDOOR |
| 220GSM PONTE ROMA FABRIC |
| LYCRA FOR MORE PERFORMANCE |
| PATTERN LIKE BESTSELLER BASE BOXER |

FABRIC **MERINO.LUX** 36% WOOL (MERINO), 46% POLYESTER, 18% LYCRA
CARE **MACHINE WASH MILD PROCESS ≤40°C, TUMBLE DRY AT LOWER TEMPERATURE, IRON LOW ≤110°C**

FIT **SLIM FIT**
SIZES **S, M, L, XL, XXL**
PACKAGING **BLACK BASE BOX**

M LUX BASE LS

MERINO.LUX

**SNM022640 | 872**

JET BLACK

LUXURY BASE LAYER LONGSLEEVE

LIFESTYLE, SKI, OUTDOOR

220GSM PONTE ROMA FABRIC

LYCRA FOR MORE PERFORMANCE

PATTERN LIKE BESTSELLER BASE LS

FIT **SLIM FIT**SIZES **S, M, L, XL, XXL**PACKAGING **BLACK BASE BOX**FABRIC **MERINO.LUX 36% WOOL (MERINO), 46% POLYESTER, 18% LYCRA**CARE **MACHINE WASH MILD PROCESS ≤40°C, TUMBLE DRY AT LOWER TEMPERATURE, IRON LOW ≤110°C****M LUX BASE TIGHT**

MERINO.LUX

**SNM022660 | 872**

JET BLACK

LUXURY BASE LAYER TIGHTS

LIFESTYLE, SKI, OUTDOOR

220GSM PONTE ROMA FABRIC

LYCRA FOR MORE PERFORMANCE

PATTERN LIKE BESTSELLER BASE TIGHT

FIT **SLIM FIT**SIZES **S, M, L, XL, XXL**PACKAGING **BLACK BASE BOX**FABRIC **MERINO.LUX 36% WOOL (MERINO), 46% POLYESTER, 18% LYCRA**CARE **MACHINE WASH MILD PROCESS ≤40°C, TUMBLE DRY AT LOWER TEMPERATURE, IRON LOW ≤110°C**

MERINO WOOL – A MARVEL OF NATURE

Merino sheep, originating from North Africa, are one of the oldest and most resilient breeds globally, renowned for their unique attributes. Well-suited to various climates, they endure both icy cold and intense heat with ease. Their natural fur texture enables them to handle temperature fluctuations of up to 40 degrees – a quality beneficial to humans as well. Merino wool provides a cooling effect in warmer temperatures and warmth on colder days.

Sourced mulesing-free and cruelty-free, the fine merino wool is obtained from living sheep, ensuring ecological sustainability as the sheep's fur naturally regrows. At **super.natural**, we prioritize ethical sourcing, obtaining our merino wool from African farms and partnering with the German worsted yarn manufacturer Südwolle. Südwolle, a leader in worsted fabrics, adheres to stringent eco-certifications such as Bluesign and Oeko-Tex standards.



THE IDEA

Founded in Switzerland in 2012, **super.natural** aims to harness the advantages of merino wool and synthetic fiber. Our brand ethos, #merinomadebetter, embodies the seamless integration of natural and synthetic fibers, offering maximum comfort and functionality. The blend of merino wool and synthetic fiber eliminates the drawbacks of each, resulting in the perfect fusion of both materials.

THE PRODUCTS

Our foundational BASE products, comprising 50% merino wool and 50% Polyester, underpin the **super.natural** brand. However, recognizing the versatility of this unique fiber blend, we have expanded beyond solely sportswear. Our timeless collection caters to everyday wear, providing an irresistible blend of comfort, style, and functionality for any wardrobe.



| CHARACTERISTICS | 100% MERINO | [sn] | 100% POLYESTER |
|--|-------------|------|----------------|
| Quick dry | ✗ | ✓ | ✓ |
| Durable | ✗ | ✓ | ✓ |
| Easy care (washable at 40°C) | ✗ | ✓ | ✓ |
| Tumble dry low | ✗ | ✓ | ✓ |
| Shape retention | ✗ | ✓ | ✓ |
| No itching | ✓ | ✓ | ✓ |
| Anti-bacterial | ✓ | ✓ | ✗ |
| No odor | ✓ | ✓ | ✗ |
| Temperature control (even in wet conditions) | ✓ | ✓ | ✗ |
| Natural UV-Protection | ✓ | ✓ | ✗ |

CONVENTIONAL WOOL

itchy —●—
slow drying properties —●—
high-maintenance —●—



MERINO WOOL

- — soft wearing comfort
- — breathable
- — temperature and moisture regulating
- — anti-odor
- — natural UV protection
- — fire resistant
- — low-maintenance

COMFY TO WEAR, EASY TO CARE.



Merino wool can absorb up to a third of its own weight in moisture, while polyester speeds up the removal of the moisture from the material. This combination offers you optimal comfort – with no trace of dampness.



The innovative combination of fibers can withstand a regular wash up to 40° C – no need for a separate wool wash. Our merino mix is incredible easy to care for.



The stabilising effect of the synthetic fibers means you can also put **super.natural** products in the dryer.



The fiber mix combines the natural elasticity of merino wool with the durability of polyester, enabling a uniquely stable shape and impressive longevity.



The tightly-knit connection between the materials creates an extremely soft surface that doesn't itch and offers incredible natural comfort.



The antibacterial effect of the enzyme keratin, which is a natural component of merino wool, prevents unpleasant odors from developing – even after profuse sweating or wearing the product multiple times.



Merino wool regulates temperature: it cools you down in hot temperatures and during increased activity, and warms you up in cold weather or when you take a break.

STILL HAVE QUESTIONS?

You might find the answer you're looking for here:

Do merino mix products start to smell more quickly than 100% merino?

Merino mix products can remove existing moisture from the material more quickly than 100% merino wool. To benefit from merino wool's antibacterial effect, you only need a proportion of 30% wool. The rapid moisture transportation of our fiber mix removes bacteria from what would be a fertile breeding ground, meaning unpleasant smells develop much more slowly. You won't have to worry about odors even after sweat-inducing activities or wearing the items multiple times.

What is mulesing? Is this procedure also a problem with super.natural products?

Mulesing, an unpleasant procedure to prevent flystrike in merino sheep, predominantly occurs in Australia. It involves the removal of strips of skin from around the hind legs and buttocks of the sheep – an incredibly painful process and a very controversial topic in sheep farming. To counteract the issue of mulesing, the wool used in **super.natural** products comes exclusively from African farms. As the flies are not present in this region, mulesing is not necessary.



How do I look after super.natural products properly?

super.natural products can simply be put in the washing machine at 40° C, and can even be tumble dried. Unlike 100% merino wool products, they can be cared for just like your usual clothes without the risk of shrinkage or of holes appearing. However, to best protect the odor-blocking enzymes in the merino fibers, it is recommended to use a wool detergent.

Why don't super.natural products itch?

The quality of wool is measured using its fiber strength. That means that the thinner the fibers, the softer it feels, and the higher the quality. **super.natural** uses merino wool with a measurement of 17 microns, which puts the wool in the 'fine' quality class. As a comparison, conventional sheep's wool measures at 30–50 microns.



supernatural-merino.com



SUPER.NATURAL WORLDWIDE:

Austria, Belgium, Canada, Iceland, Denmark, Finland, France, Germany, Greece, Italy, Japan, Netherlands, Norway, Poland, Romania, Slovakia, Slovenia, Spain, Switzerland, Sweden, UK

CONTACT

super.natural Europe GmbH, Ridlerstrasse 35a, D-80339 Munich
+49 (0) 89 18 91 72 57 / office@sn-europe.com