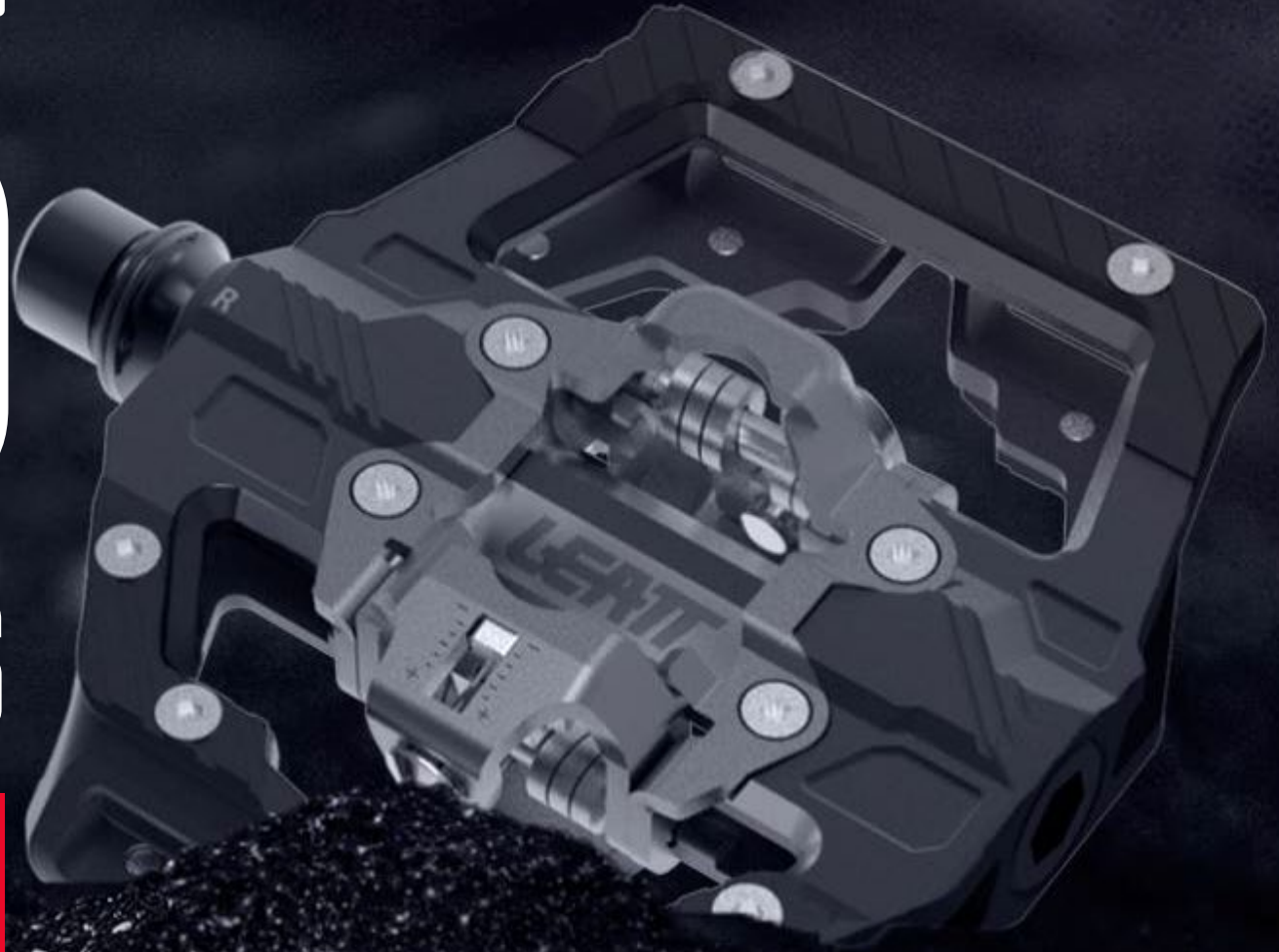


25

COMPONENTS



SKETCHBOOK



MAGNESIUM ALLOY

CERAMAG

TECHNOLOGY

CERAMIC COATED MAGNESIUM ALLOY

IMPROVED RIDE COMFORT
LIGHT WEIGHT
STRONG
RECYCLABLE

HIGH WEAR RESISTANCE COATING

PLASMA CERAMIC CORROSION SEAL



WHY ECO FRIENDLY

As the lightest structural metal, magnesium is also considered one of the most environmentally friendly materials. Its elements are abundantly found on Earth and are effortlessly sourced from minerals, brines, and seawater, making it a nearly limitless resource. Unlike carbon fiber, magnesium can be 100% recycled, and it naturally dissolves, leaving no trace in the environment.

Magnesium allows Leatt to experience the future of sustainable performance, unlocking the perfect blend of strength, weight savings, and riding characteristics. Leatt fully capitalizes on these properties to elevate your ride when designing our components.





2025 COMPONENTS PEDALS

FLAT PEDALS



FLAT PEDAL ALL MTN TECHNOLOGY



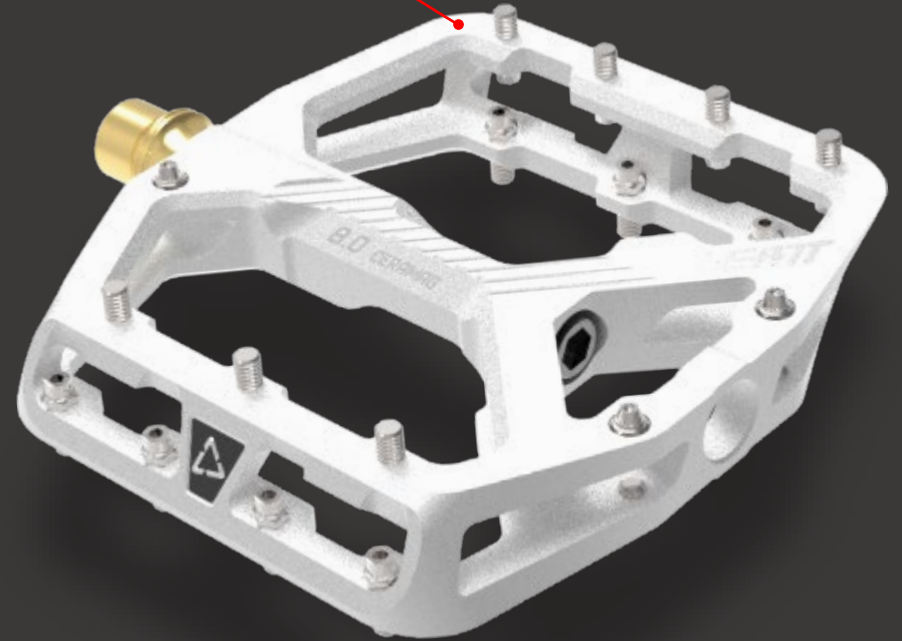
OUTSTANDING GRIP

CONCAVE +5.0mm



TESTED & CERTIFIED

EFBE GERMANY

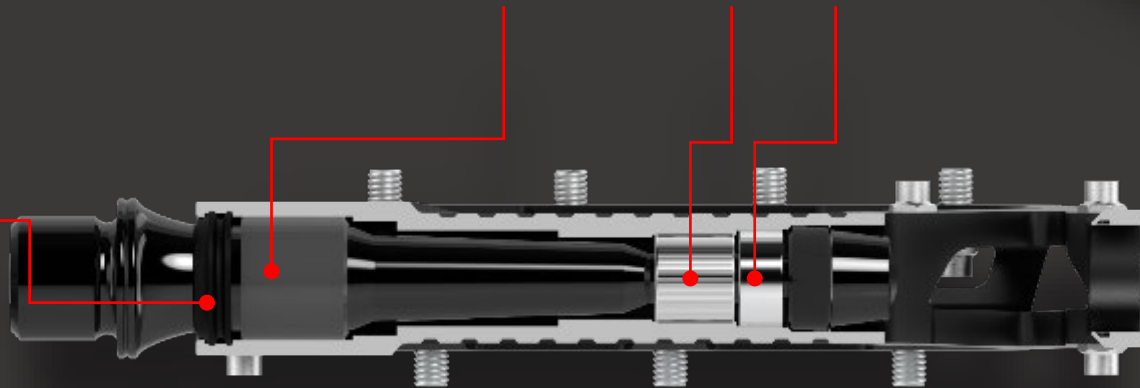


ULTIMATE DURABILITY

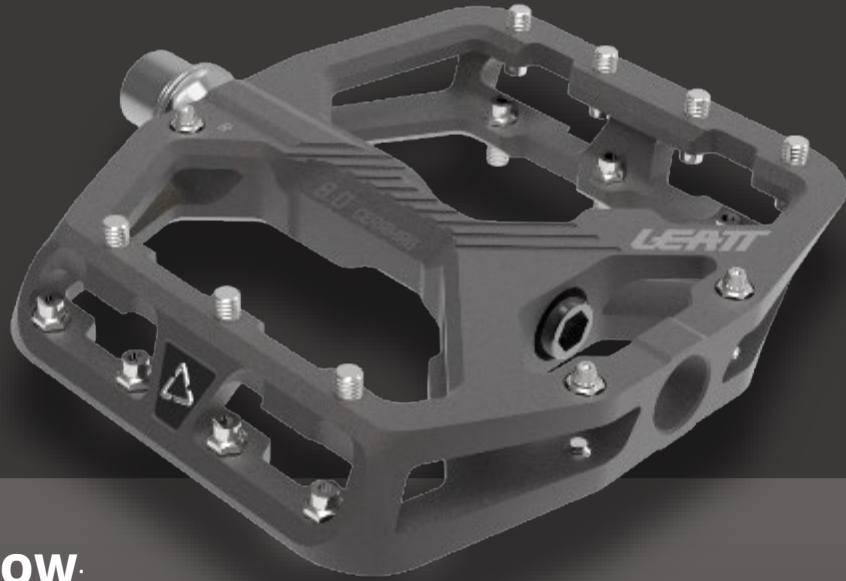
DOUBLE SEAL - TRIPLE-BEARING SYSTEM



QUAD SEAL



FLAT PEDAL ALL MTN – NARROW VS WIDE



NARROW:

PLATFORM SIZES: 114mm X 100mm X 16mm (L X W X H)

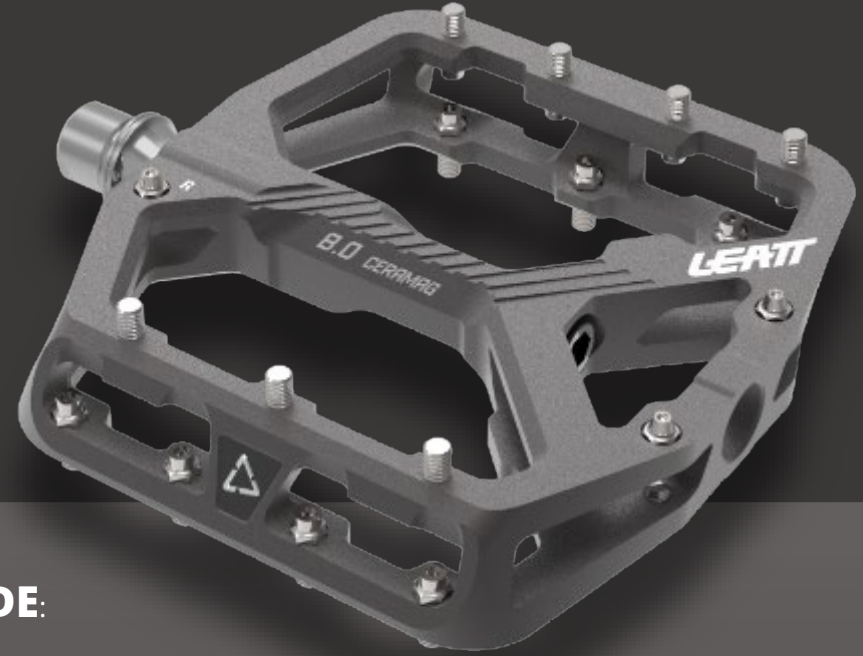
STANCE WIDTH: 60mm

WEIGHT:

CeraMAG 8.0TI: 256g (Magnesium Body & Titanium Spindle)

CERAMAG 8.0: 309g (Magnesium Body & CroMoly Spindle)

ALUMINUM 6.0: 381g (Aluminum Body & CroMoly Spindle)



WIDE:

PLATFORM SIZES: 114mm X 107mm X 16mm (L X W X H)

STANCE WIDTH: 63mm

WEIGHT:

CERAMAG 8.0: 309g (Magnesium Body & CroMoly Spindle)

ALUMINUM 6.0: 381g (Aluminum Body & CroMoly Spindle)

A white ceramic magnet assembly is shown from a top-down perspective. The assembly is a complex, multi-ported component with a central circular opening. It features several small, cylindrical protrusions around its perimeter, which are likely for mounting or alignment. A yellow cap is attached to one of the ports on the left side. The word "CERAMAG" is overlaid in a large, white, stylized font across the center of the component. The background is a dark, solid color.

CERAMAG

FLAT PEDAL ALL MTN 8.0TI & 8.0 CERAMAG TECHNOLOGY

PLATFORM MATERIAL

Extruded and CNC machined
Ceramag Magnesium

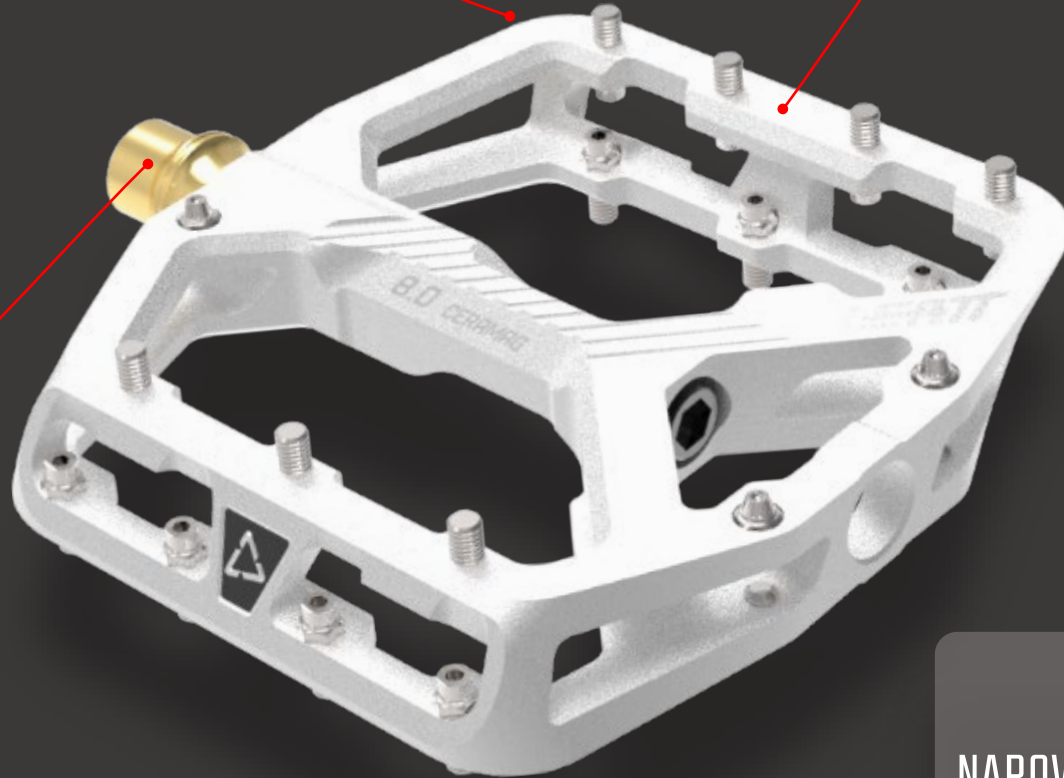
SPINDLE

8.0TI: CNC machined grade 5
Ti-6AL-4V **Titanium**

8.0: Forged and CNC
SNM220 **chromoly steel**

FINISH

Ceramic protective
coating



CERAMAG

8.0TI:
NARROW PLATFORM ONLY
WEIGHT: 256g

SIZES (L X W X H) :
Large : 114mm X 107mm X 16mm
Narrow : 114mm X 100mm X 16MM

STANCE WIDTH:
Large: 63mm / Narrow: 60mm

PROFILE: 5mm actual concavity

PLATFORM MATERIAL: •CeraMag
Magnesium ceramic coated for high
wear resistance and enhance
durability

PINS:10 replaceable Stainless-steel
pins per sides (7 bottom loaded
threaded pins and 3 top loaded
diamond studs)

SPINDLE: 8.0: Forged and CNC
chromoly steel
8.0 Ti: CNC machined grade 5
Titanium

INTERNALS: Leatt triple bearing
construction (1x light self-
lubricating bushing, 1x needle
bearing , 1x sealed roller bearing)
and quad lip seal

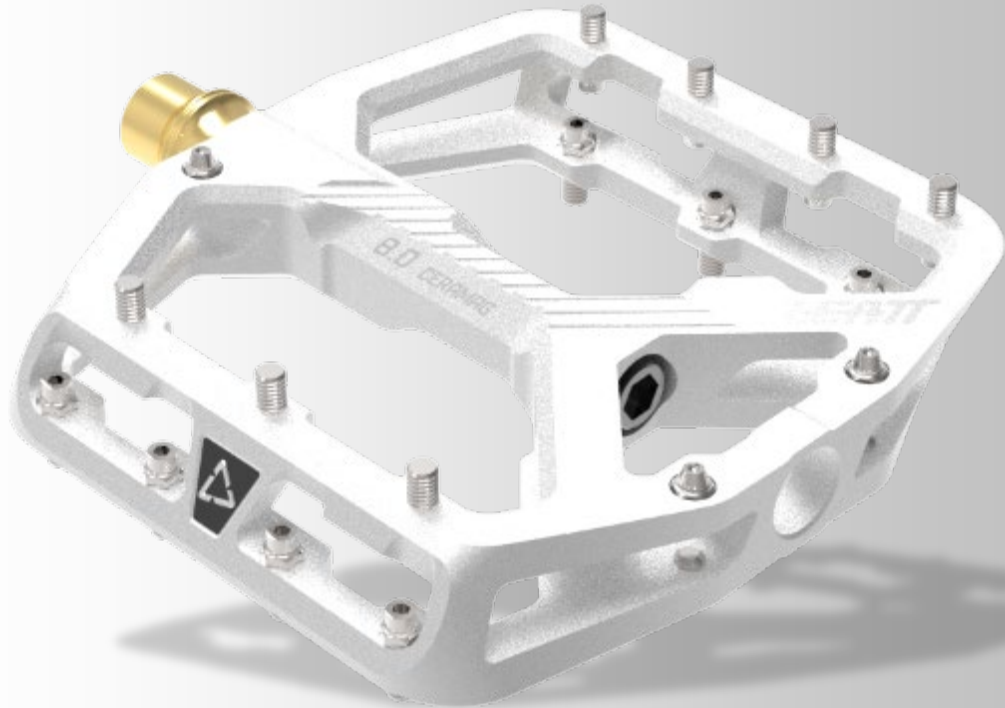
FINISH: Ceramic protective coating

WEIGHT 8.0 :309g
8.0TI : 256G

INTENDED USE : Downhill / Freeride
/ Enduro /All MTN/ Dirt jump /
Slopestyle/ Trail / E-bike

FLAT PEDAL CERAMAG ALL MTN 8.0TI

HIGH-END ULTRA LIGHTWEIGHT FLAT-PEDAL WITH TI-AXLE

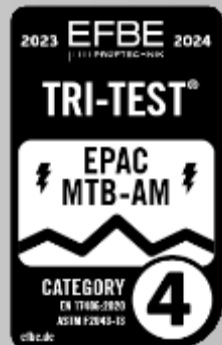


PART NO: **DESCRIPTION:**

9025100100 Pedals CeraMAG AllMtn 8.0Ti Flat #Narrow 114x100mm CeraBone



CERAMAG



**NEW 25
PRODUCT**

x x x

- **CeraMAG - Ceramic Coated Magnesium Alloy**
 - **Improved Ride comfort**
 - **Light weight**
 - **Strong**
 - **Recyclable**
- **CeraMAG vibration reduction** for great pedal contact
- **Ceramic coating** for maximum wear and corrosion durability
- **Titanium axle** for further **weight reduction**.
- **Weight: 256grams** for the pair. Yes it is true
- **Outstanding Grip** with 5mm Concave platform and 7+3 traction pins
- **Ultimate Durability** with Leatt **Dual Seal & Triple Bearing** System
- **Narrower platform** reduces rock strikes and improves ground clearance and lean angle.
- **Engineered rotational resistance** prevents the pedals from spinning too quickly, **making it easier to reposition your feet during slips**
- **The chamfered leading-edge platform** helps deflect rock strikes.
- **Tested & Certified to EFBE All-Mtn TRI-TEST® standard (category 4), simulating a lifetime of abuse.**

FLAT PEDAL CERAMAG ALL MTN 8.0

HIGH-END LIGHTWEIGHT FLAT-PEDAL



PART NO: **DESCRIPTION:**

9025100200 Pedals CeraMAG AllMtn 8.0 Flat #Wide 114x107mm CeraGrey
9025100210 Pedals CeraMAG AllMtn 8.0 Flat #Narrow 114x100mm CeraGrey



CERAMAG



**NEW 25
PRODUCT**

x x x

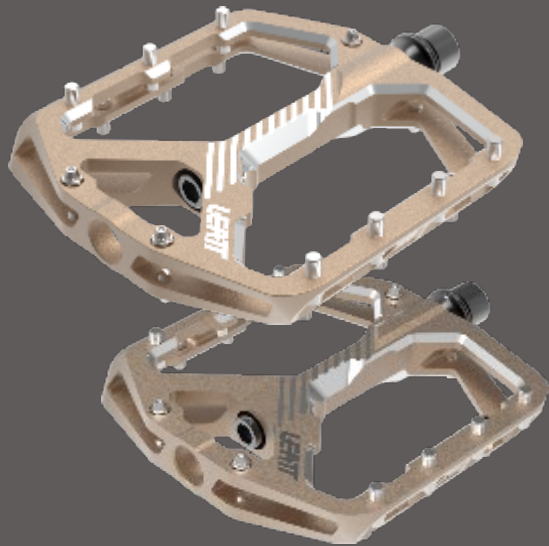
- **CeraMAG - Ceramic Coated Magnesium Alloy**
 - **Improved Ride comfort**
 - **Light weight**
 - **Strong**
 - **Recyclable**
- **CeraMAG vibration reduction** for great pedal contact
- **Ceramic coating** for maximum wear and corrosion durability
- **Forged and CNCed SNCM220 chromoly steel axle** for max. strength
- **Weight: 309 grams** for the pair (both platform sizes)
- **Outstanding Grip** with 5mm Concave platform and 7+3 traction pins
- **Ultimate Durability** with Leatt **Dual Seal & Triple Bearing** System
- **Engineered rotational resistance** prevents the pedals from spinning too quickly, **making it easier to reposition your feet during slips**
- **The chamfered leading-edge platform** helps deflect rock strikes.
- **Tested & Certified to EFBE All-Mtn TRI-TEST® standard (category 5)**, simulating a lifetime of abuse.



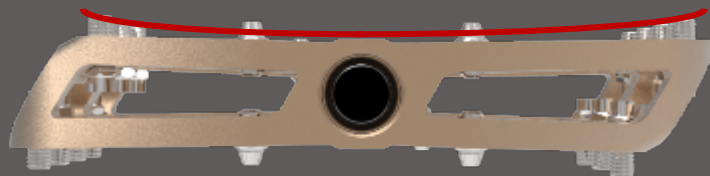
Aluminum

FLAT PEDAL ALL MTN 6.0 TECHNOLOGY

AVAILABLE IN 2 PLATFORM SIZES



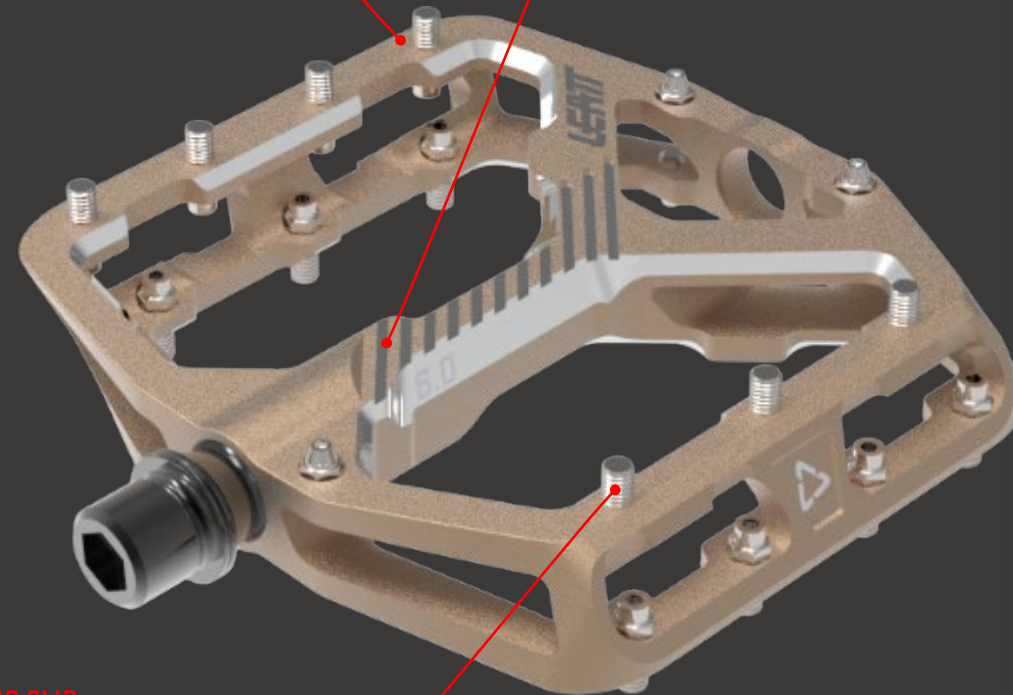
CONCAVE +5.0mm



SUPER ROBUST

Chamfered edge profile and burly internals make our pedal ready for impact.

CNC 6061-T6 ALUMINUM



ALL GRIP, NO SLIP

Tunable pins and studs.

SIZES (L X W X H) :
Large : 114mm X 107mm X 16mm
Narrow : 114mm X 100mm X 16MM

STANCE WIDTH:
Large: 63mm / Narrow: 60mm

PROFILE: 5mm actual concavity

PLATFORM MATERIAL:
Extruded and CNC 6061-T6 Aluminum

PINS:10 replaceable Stainless-steel pins per sides (7 bottom loaded threaded pins and 3 top loaded diamond studs)

SPINDLE: forged and CNC SNCM220 chromoly steel

INTERNALS: Leatt triple bearing construction (1x light self-lubricating bushing, 1x needle bearing, 1x sealed roller bearing) and quad lip seal

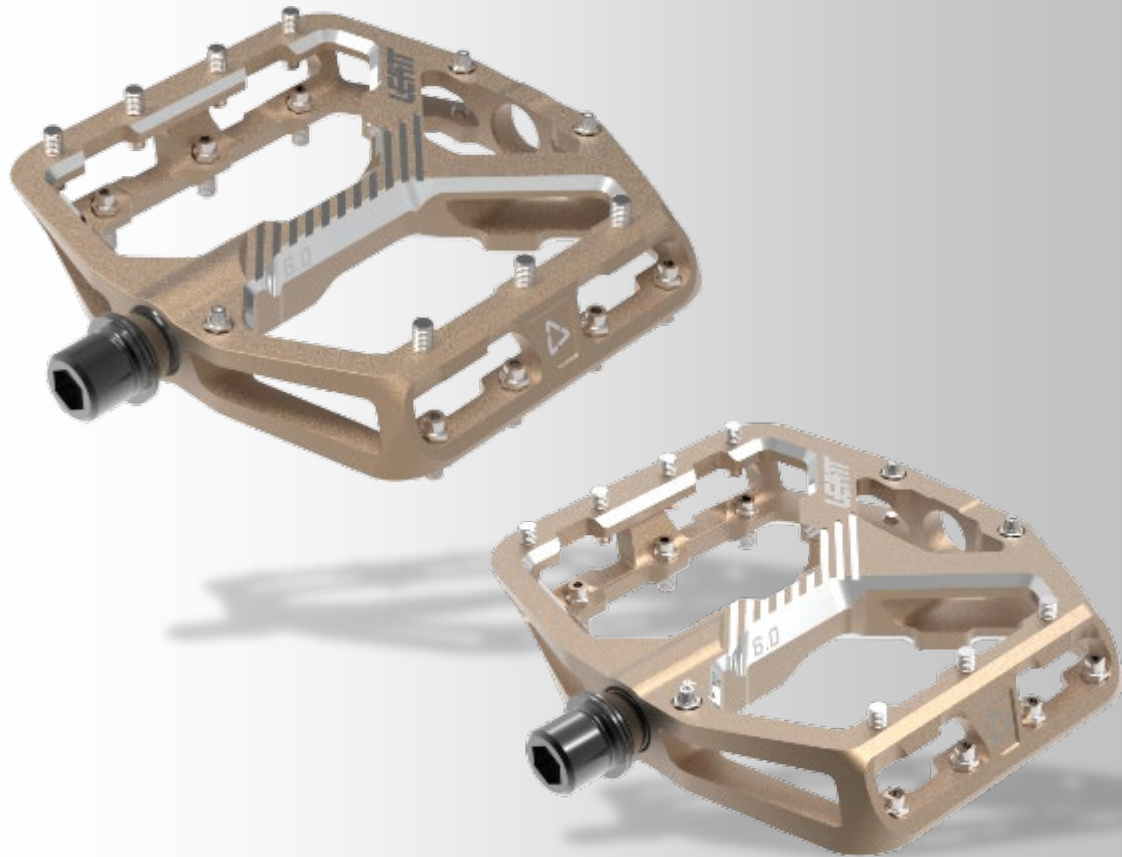
FINISH: Shot peened anodized and CNC

WEIGHT:381g

INTENDED USE : Downhill / Freeride / Enduro /All MTN/ Dirt jump / Slopestyle/ Trail / E-bike

FLAT PEDAL ALL MTN 6.0

LIGHTWEIGHT ALUMINUM FLAT-PEDAL - 2 SIZES



NEW 25
PRODUCT

x x x

- Pedal Body:
 - **Chamfered platform edges**
 - **CNCed 6061 Aluminum body**
 - **Shot-peened anodized surface finish**
 - **Resistance to impacts** and rock strikes.
- **Forged and CNCed SNCM220 chromoly steel axle** for max. strength
- **Weight: 381 grams** for the pair (both platform sizes)
- **Outstanding Grip** with 5mm Concave platform and 7+3 traction pins
- **Ultimate Durability** with Leatt **Dual Seal & Triple Bearing** System
- **Engineered rotational resistance** prevents the pedals from spinning too quickly, **making it easier to reposition your feet during slips**
- **The chamfered leading-edge platform** helps deflect rock strikes.
- **Tested & Certified to EFBE All-Mtn TRI-TEST® standard (category 5)**, simulating a lifetime of abuse.

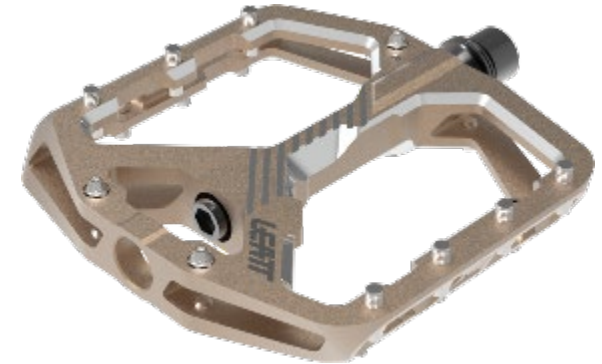
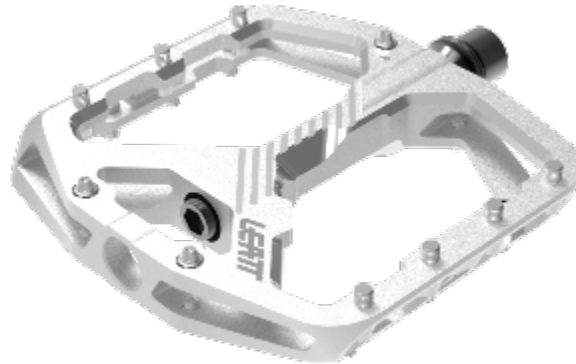
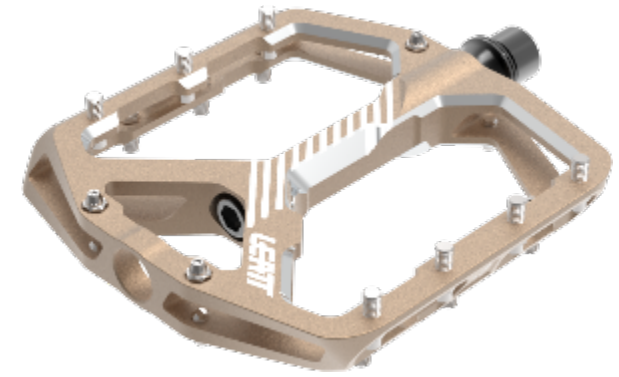
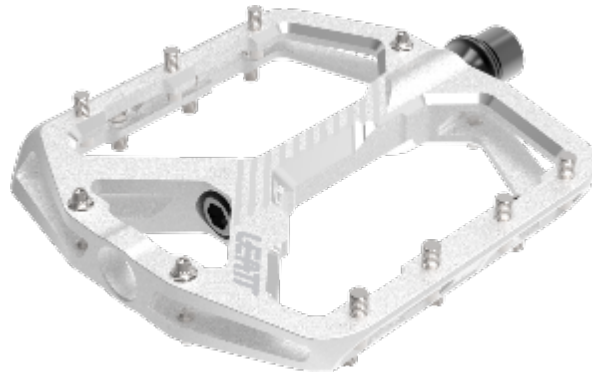


FLAT PEDAL ALL MTN 6.0

NEW 25
PRODUCT

LIGHTWEIGHT ALUMINUM FLAT-PEDAL - 2 SIZES - 3 COLORWAYS

x x x



PART NO: **DESCRIPTION:**

9025100300 Pedals AllMtn 6.0 Flat #Wide 114x107mm Black
9025100330 Pedals AllMtn 6.0 Flat #Narrow 114x100mm Black

PART NO: **DESCRIPTION:**

9025100310 Pedals AllMtn 6.0 Flat #Wide 114x107mm Silver
9025100340 Pedals AllMtn 6.0 Flat #Narrow 114x100mm Silver

PART NO: **DESCRIPTION:**

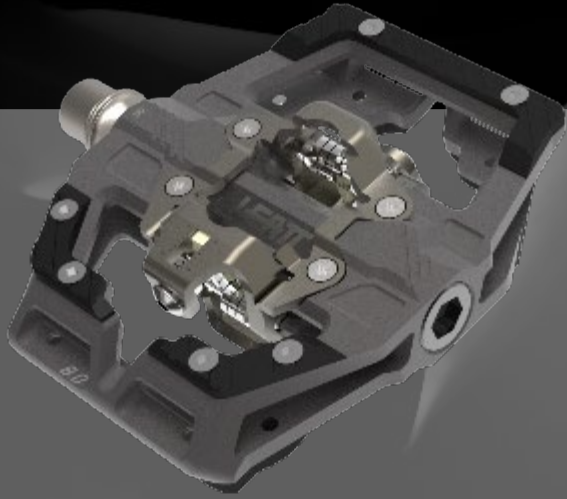
9025100320 Pedals AllMtn 6.0 Flat #Wide 114x107mm Frost Bronze
9025100350 Pedals AllMtn 6.0 Flat #Narrow 114x100mm Frost Bronze

CLIP PEDALS



GROUND CLEARANCE VS. GRIP VS. WEIGHT

2025 HARDWARE SKETCHBOOK



GRAVITY CLIP PEDAL

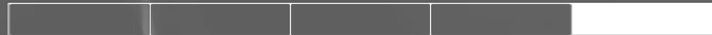
GROUND CLEARANCE



MIN

MAX

GRIP PLATFORM-SHOE



MIN

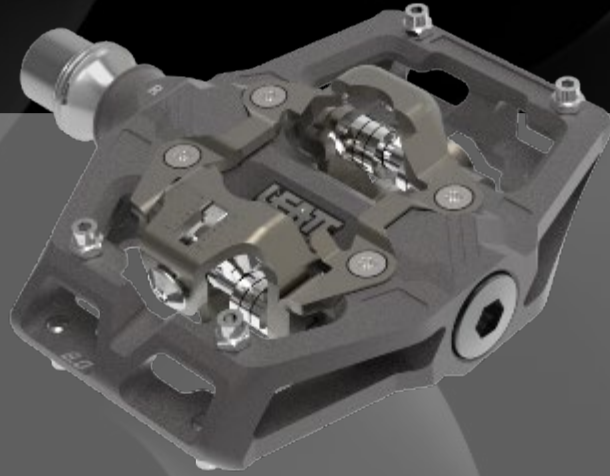
MAX

LIGHTWEIGHT



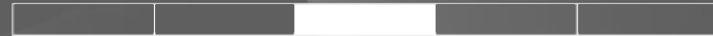
MIN

MAX



ALL-MTN CLIP PEDALS

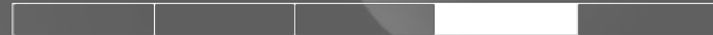
GROUND CLEARANCE



MIN

MAX

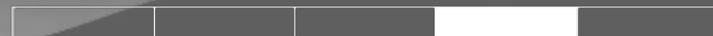
GRIP PLATFORM-SHOE



MIN

MAX

LIGHTWEIGHT



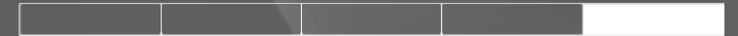
MIN

MAX



ENDURANCE CLIP PEDALS

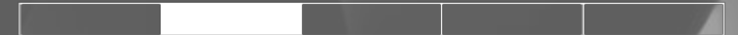
GROUND CLEARANCE



MIN

MAX

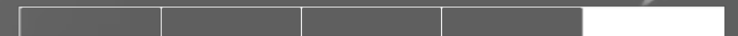
GRIP PLATFORM-SHOE



MIN

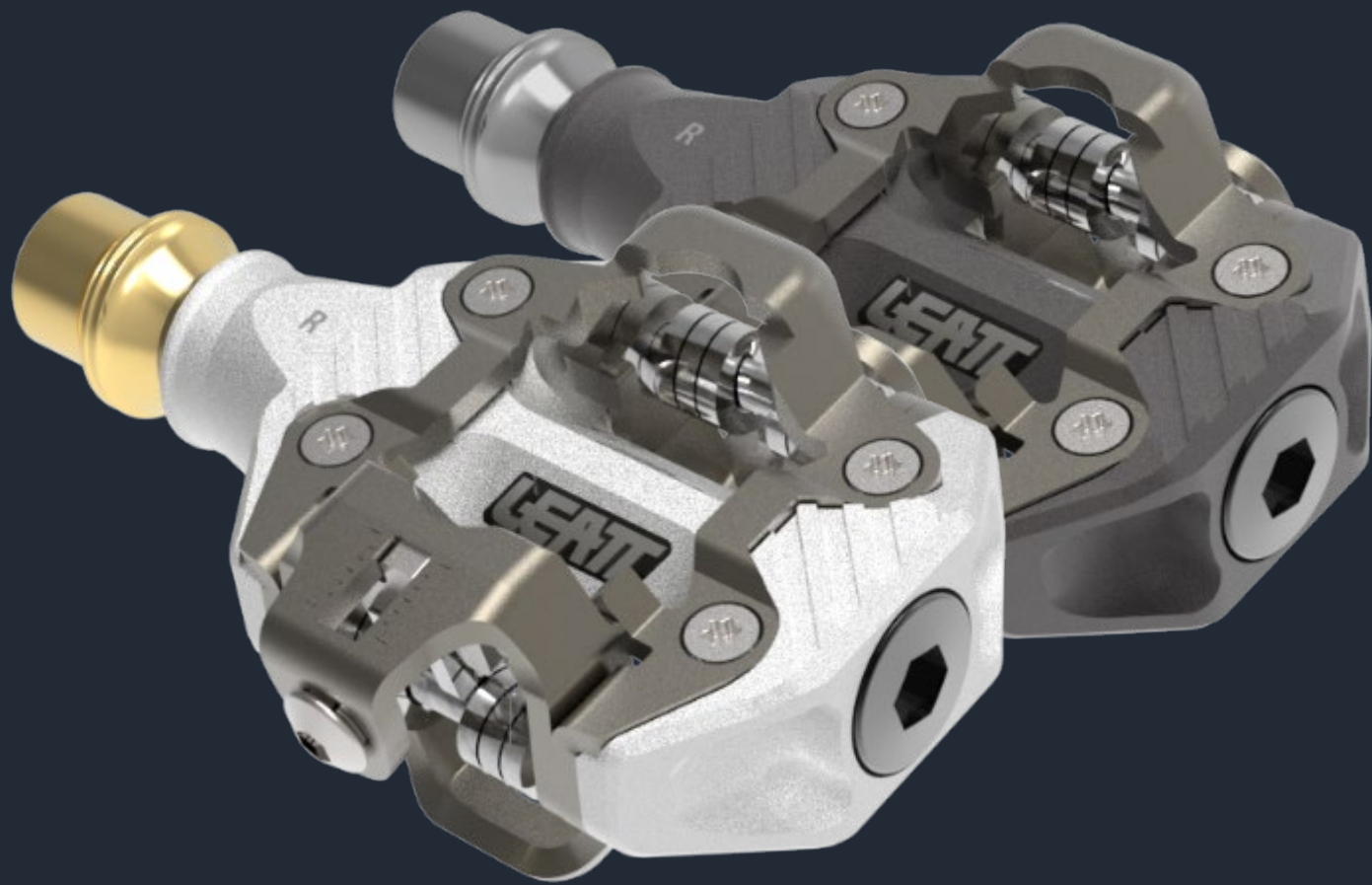
MAX

LIGHTWEIGHT



MIN

MAX



CLIP PEDAL
ENDURANCE

CLIP PEDAL ENDURANCE TECHNOLOGY

EASY IN & OUT

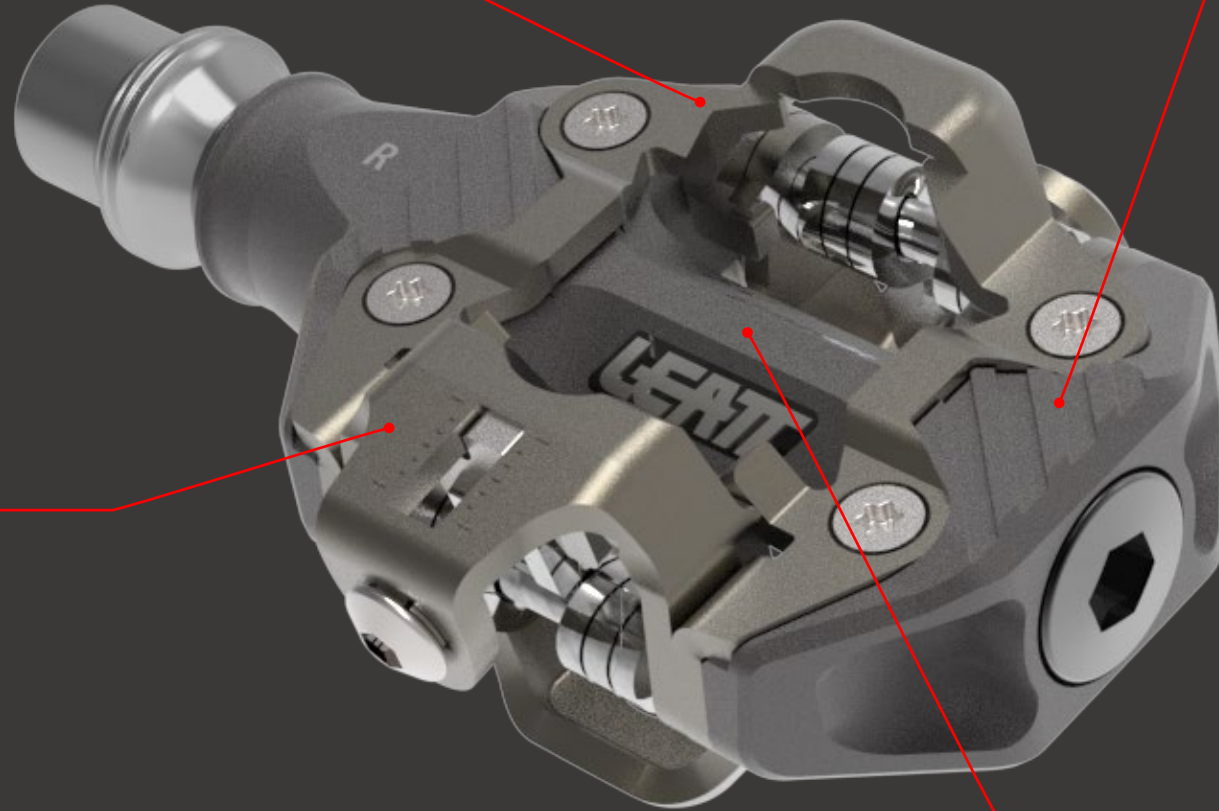
DUAL SIDED CLIP-IN RETENTION SYSTEM
SPD compatible with a positive engagement
and feedback

EASY TO SET / READ

Straight forward entry / release
adjustment on all sides

CONTACT PLATFORM

Improved shoe stability for
optimum power transfer



HIGH DURABILITY

TRIPLE BEARING SYSTEM & QUAD SEAL
Optimal spindle support for long term
durability in the harshest condition

CERAMAG

CLIP PEDAL ENDURANCE 8.0TI & 8.0 TECHNOLOGY

CERMAG BODY

Extruded and CNC machined CeraMAG Magnesium

TI OR CROMOLY

8.0 TI - CNC machined grade 5 Ti-6AL-4V **Titanium**

8.0 - Forged and CNC SNCM220 **chromoly steel**

CERMATIC COATING

SUPER LEIGHTWEIGHT

8.0TI - 300g
8.0 - 354g

CERAMAG

Specifications 8.0 TI / 8.0 :

RETENTION SYSTEM: Dual-Side sided Clip-in, with adjustable release and entry tension

CLEAT SYSTEM: SPD compatible, 5° free float

SIZES: 48mm X 58mm X 20mm (L X W X H)

STANCE WIDTH: 55mm

PLATFORM MATERIAL: Extruded and CNC machined Ceramag Magnesium

FINISH: Ceramic protective coating

8.0TI - SPINDLE:

CNC machined grade 5 6AL/4V **Titanium**

8.0 - SPINDLE:

Forged and CNC SNCM220 **chromoly steel**

8.0TI - WEIGHT: 298g

8.0 - - WEIGHT: 354g

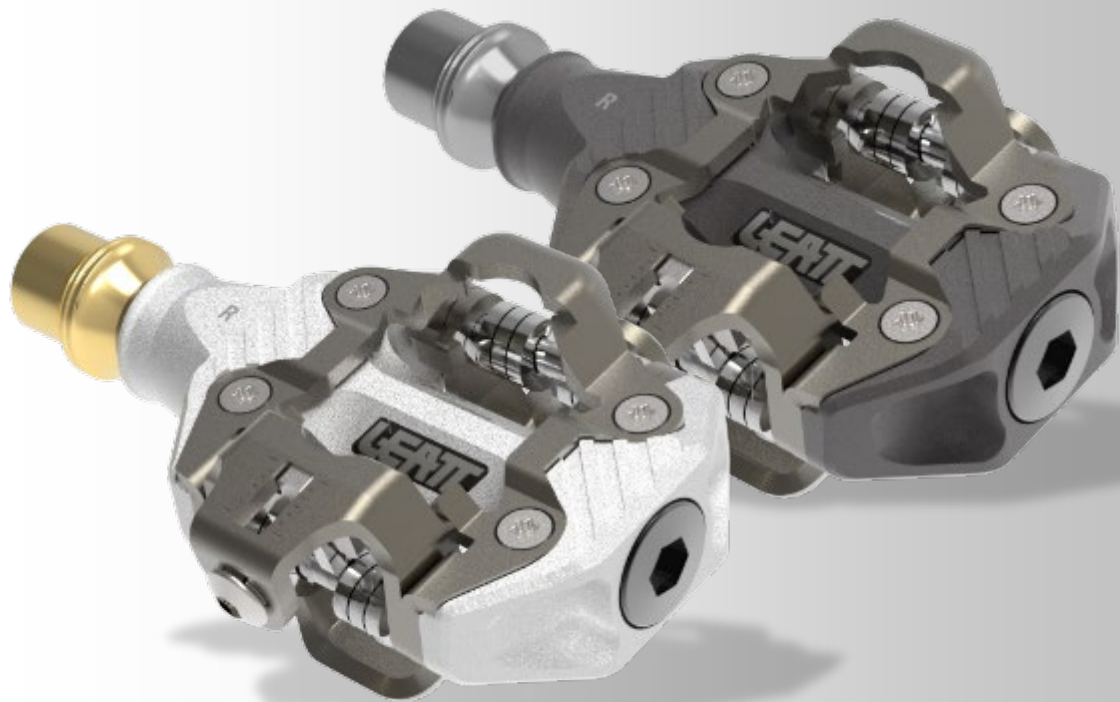
INTERNALS: Leatt triple bearing construction (1x light self-lubricating bushing, 1x needle bearing , 1x sealed roller bearing) and quad lip seal

INTENDED USE:

8.0 & 8.0TI - Trail / XC / Gravel/ E-bike

CLIP PEDAL CERAMAG ENDURANCE 8.0TI & 8.0

HIGH-END SUPER-LIGHTWEIGHT RACE PEDAL - TI-OPTION



PART NO: **DESCRIPTION:**

9025100400 Pedals CeraMAG Endurance 8.0Ti Clip-in 48x58mm CeraBone
9025100520 Pedals CeraMAG Endurance 8.0 Clip-in 48x58mm CeraGrey



CERAMAG



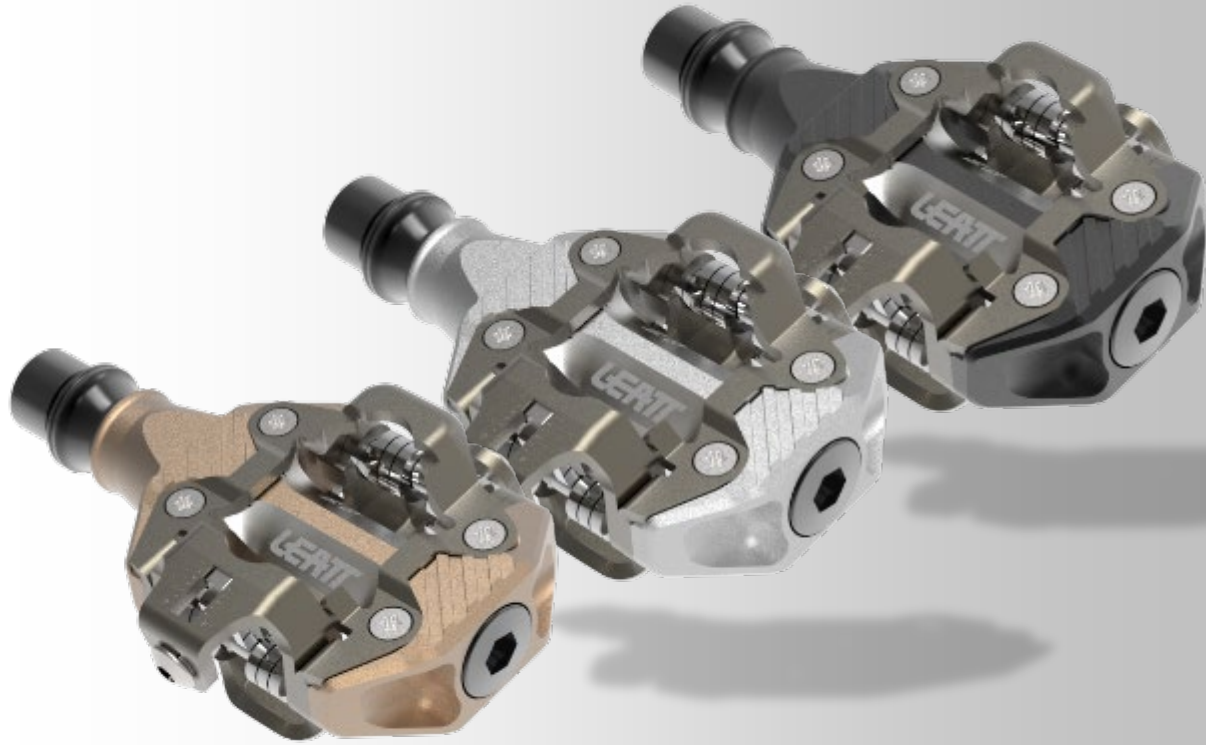
**NEW 25
PRODUCT**

× × ×

- **CeraMAG - Ceramic Coated Magnesium Alloy**
 - **Improved Ride comfort**
 - **Light weight**
 - **Strong**
 - **Recyclable**
- **CeraMAG vibration reduction** for great pedal contact
- **Small platform to** support the shoe and enhance power transfer.
- **Ceramic coating** for maximum wear and corrosion durability
- **Spindle // Weight**
 - **8.0Ti: Titanium axle** for further weight reduction // **298 grams**
 - **8.0:** Forged and CNC SNCM220 **chromoly steel axle** // **354 grams**
- **EFBE-certified** according to
 - **8.0 Ti: EPAC XC TRI TEST standard (category3)**
 - **8.0: EPAC GRAVITY TRI TEST standard (category 5)**simulating a lifetime of riding for both electricized and non-electricized cyclists.
- **Ultimate Durability** with Leatt **Dual Seal & Triple Bearing** System
- **Dual-sided clip-in** retention system:
 - positive engagement and feedback.
 - adjustable spring tension for consistent entry and release.
 - 5 degrees of free float

CLIP PEDAL ENDURANCE 6.0

HIGH-END LIGHTWEIGHT ALUMINUM RACE PEDAL



PART NO: DESCRIPTION:

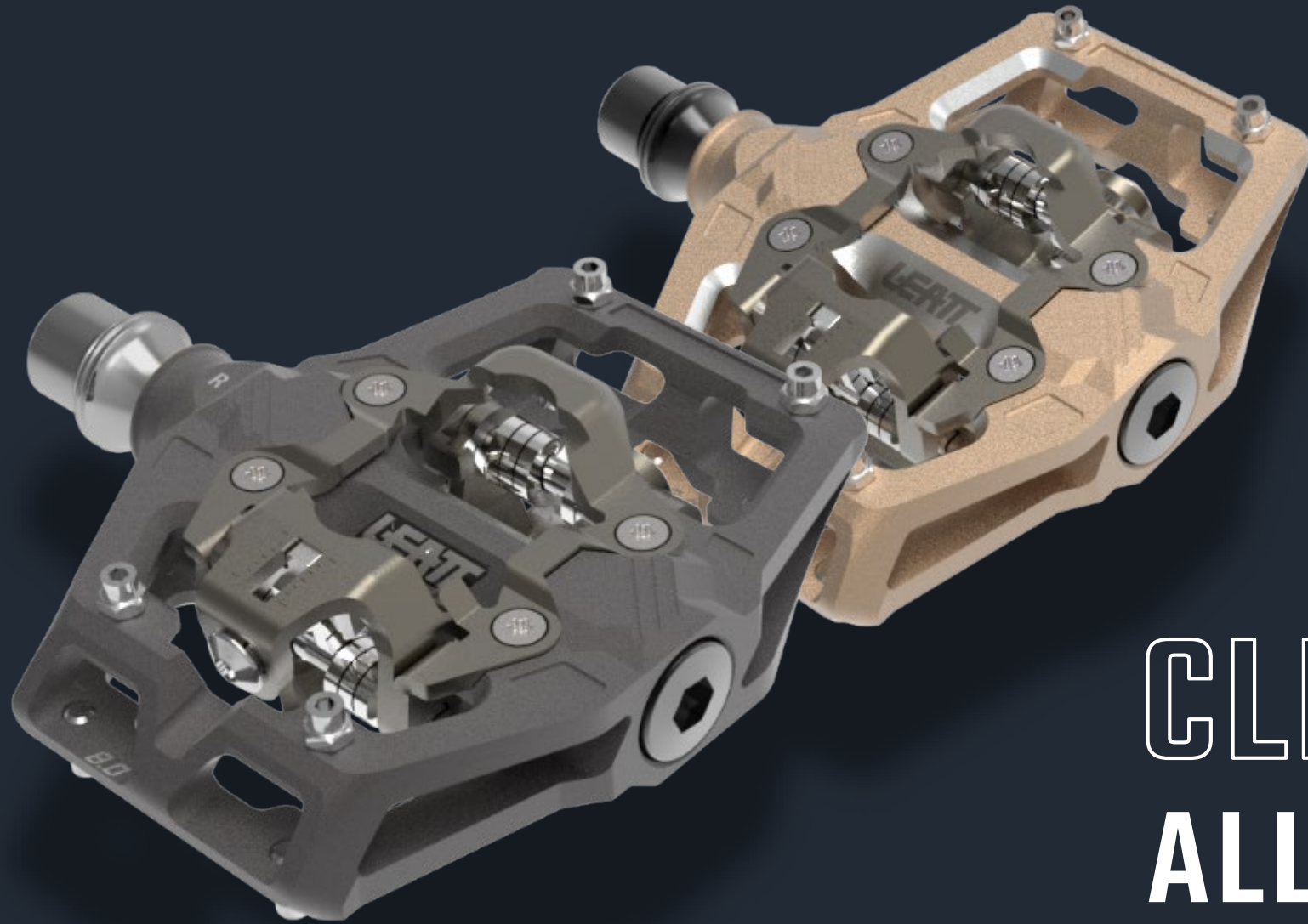
9025100660 Pedals Endurance 6.0 Clip-in 48x58mm Black
9025100670 Pedals Endurance 6.0 Clip-in 48x58mm Silver
9025100680 Pedals Endurance 6.0 Clip-in 48x58mm Frost Bronze

NEW 25
PRODUCT

x x x

- **Small platform** to support the shoe and enhance power transfer.
- Main body **material**.: extruded and CNC 6061-T6 **Aluminum**
- **Shot-peened anodized surface finish** helps improve fatigue and reduces the risk of crack propagation.
- **Dual-sided clip-in** retention system:
 - positive engagement and feedback.
 - adjustable spring tension for consistent entry and release.
 - 5 degrees of free float
- **Ultimate Durability** with Leatt **Dual Seal & Triple Bearing** System
- **Spindle/axle: Forged and CNC SNCM220 chromoly steel**
- **Weight: 382 grams (pair)**



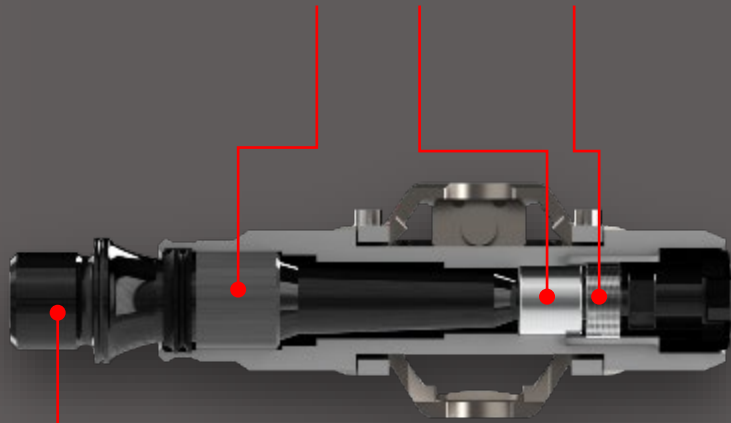


**CLIP PEDAL
ALL MOUNTAIN**

CLIP PEDAL ALL MTN TECHNOLOGY

LEATT TRIPLE-BEARING SYSTEM

FOR LONG TERM DURABILITY IN HARSH CONDITIONS



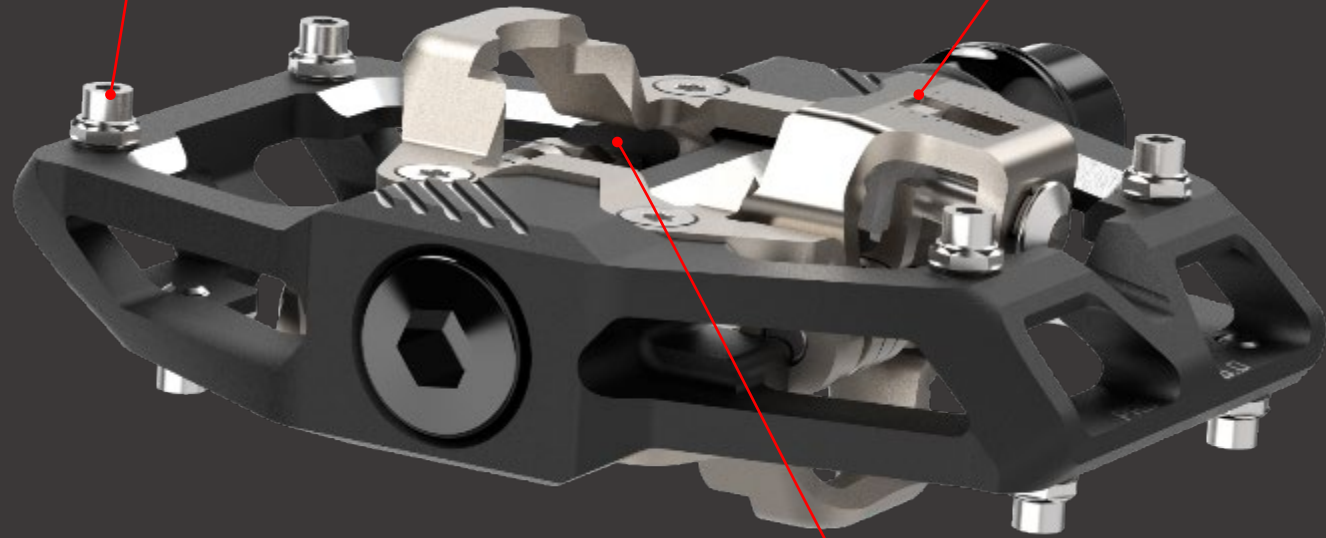
QUAD SEAL

ALL GRIP, NO SLIP

Medium-Sized platform and grip pins, enhance shoe support, increase traction.

EASY TO SET/ READ

Straight forward entry/ release adjustment on all sides.

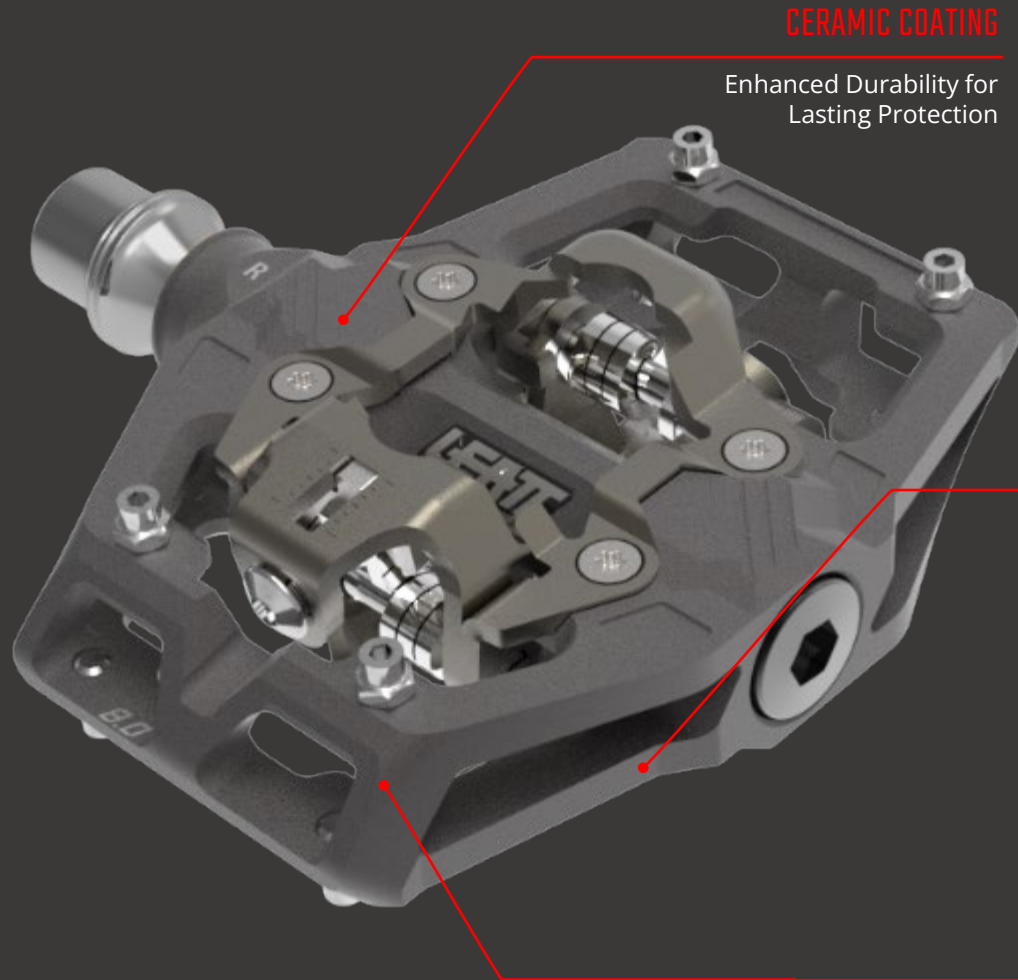


EASY IN & OUT

DUAL SIDED CLIP-IN RETENTION SYSTEM
SPD compatible with a positive engagement and feedback

CERAMAG

CLIP PEDAL CERAMAG ALL MTN 8.0 TECHNOLOGY



CERAMIC COATING

Enhanced Durability for Lasting Protection

EFBE CAT 5 = HARDCORE

Meet EFBE EPAC MTB-GRAVITY TRI-TEST® CAT 5 Standard

CERAMAG BODY

Extruded and CNC machined CeraMAG Magnesium dampening vibrations

Specifications:

RETENTION SYSTEM: Dual-Side sided Clip-in, with adjustable release and entry tension

CLEAT SYSTEM: SPD compatible, 5° free float

SIZES: 95mm X 70mm X 20mm (L X W X H)

STANCE WIDTH: 55mm

PINS: 4 replaceable Stainless-steel pins per side

PLATFORM MATERIAL: Extruded and CNC machined CeraMAG Magnesium

SPINDLE: Forged and CNC SNCM220 chromoly steel

INTERNALS: Leatt triple bearing construction (1x light self-lubricating bushing, 1x needle bearing, 1x sealed roller bearing) and quad lip seal

FINISH: Ceramic protective coating

WEIGHT: 364 g

INTENDED USE: Downhill / Freeride / Enduro / All MTN/ Dirt jump / Slopestyle/ Trail / E-bike

CERAMAG

CLIP PEDAL CERAMAG ALLMTN 8.0

HIGH-END LIGHTWEIGHT TR/AM PEDAL

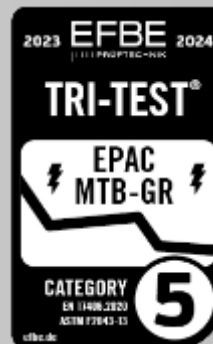


PART NO: **DESCRIPTION:**

9025100510 Pedals CeraMAG AllMtn 8.0 Clip-in 95x70mm CeraGrey



CERAMAG

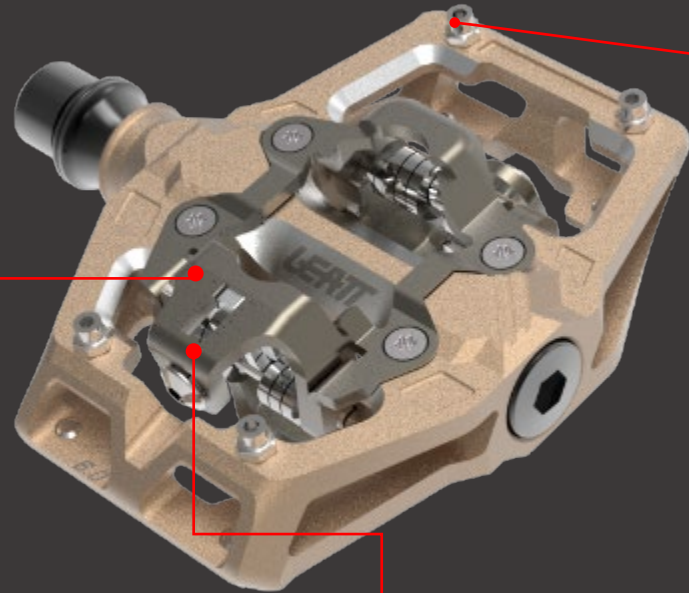


**NEW 25
PRODUCT**

x x x

- **CeraMAG - Ceramic Coated Magnesium Alloy**
 - **Improved Ride comfort**
 - **Light weight**
 - **Strong**
 - **Recyclable**
- **CeraMAG vibration reduction** for great pedal contact
- **Ceramic coating** for maximum wear and corrosion durability
- **Medium-sized platform:** solid shoe support to enhance power transfer, plus **dropped front** portions facilitate shoe entry
- **Pins increase stability** and traction in technical situations when disengaged from the pedal.
- **Dual-sided clip-in** retention system:
 - positive engagement and feedback.
 - adjustable spring tension for consistent entry and release.
 - 5 degrees of free float
- Forged and CNC SNCM220 **chromoly steel axle**
- **EFBE-certified** according to **PAC GRAVITY TRI TEST standard (category 5)**, simulating a lifetime of riding for both electricized and non-electricized cyclists.
- **Ultimate Durability** with Leatt **Dual Seal & Triple Bearing** System
- **Weight: 364** grams

CLIP PEDAL ALL MTN 6.0 TECHNOLOGY

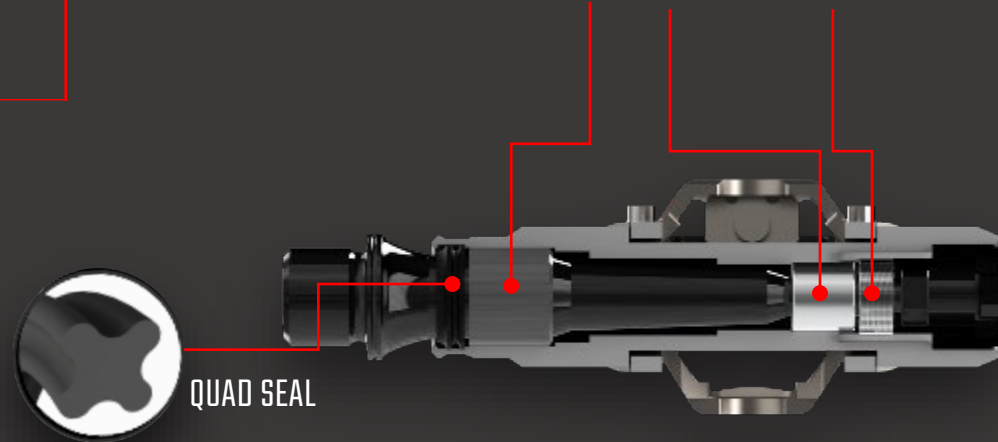


MID SIZED PLATFORM WITH PINS

ULTIMATE DURABILITY

LEATT TRIPLE-BEARING SYSTEM

FOR LONG TERM DURABILITY IN HARSHTEST CONDITIONS



EASY TO SET/ READ

Straight forward entry/ release adjustment on all sides

EASY IN & OUT

DUAL SIDED CLIP-IN RETENTION SYSTEM
SPD compatible with a positive engagement and feedback

Specifications:

RETENTION SYSTEM: Dual-Side sided Clip-in, with adjustable release and entry tension

CLEAT SYSTEM: SPD compatible, 5° free float

SIZES: 95mm X 70mm X 20mm (L X W X H)

STANCE WIDTH: 55mm

PINS: 4 replaceable Stainless-steel pins per side

PLATFORM MATERIAL: Extruded and CNC 6061-T6 Aluminum

SPINDLE: Forged and CNC SNCM220 chromoly steel

INTERNALS: Leatt triple bearing construction (1x light self-lubricating bushing, 1x needle bearing, 1x sealed roller bearing) and quad lip seal

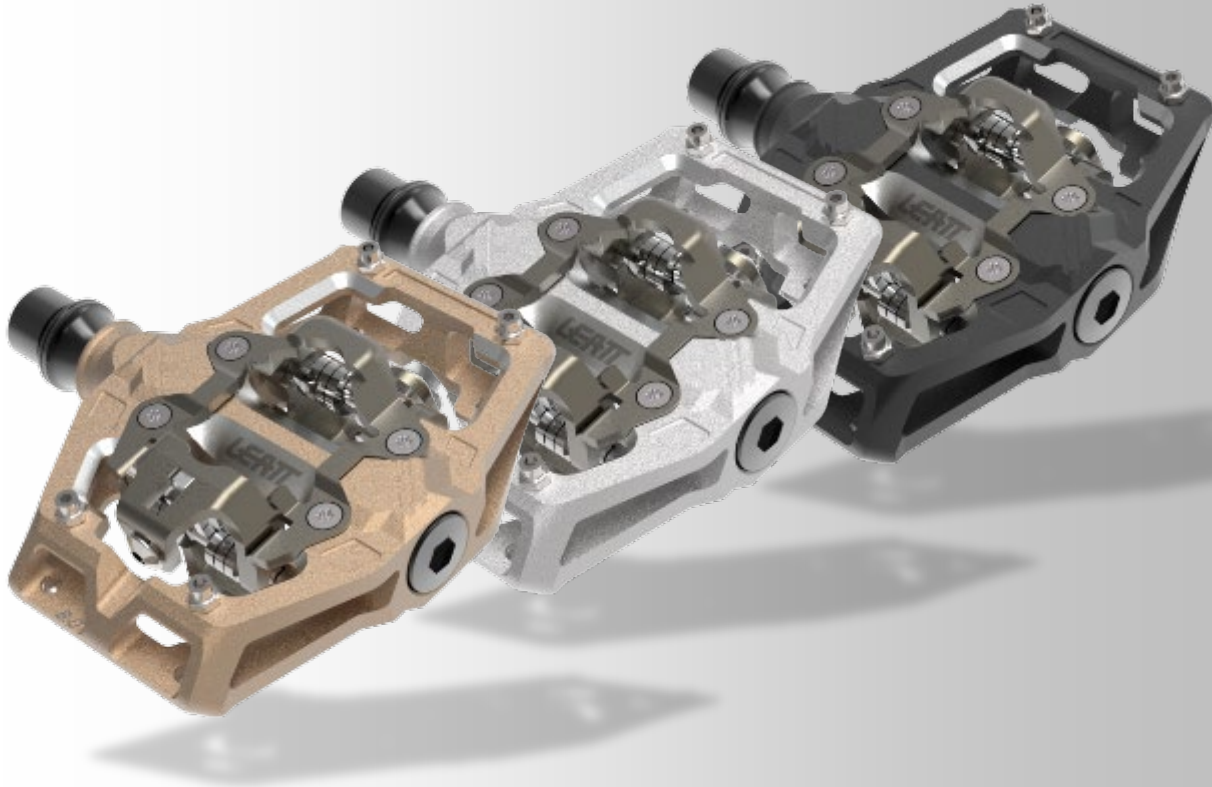
FINISH: Shot peened anodized and CNC

WEIGHT: 466 g

INTENDED USE: Downhill / Freeride / Enduro / All MTN/ Dirt jump / Slopestyle/ Trail / E-bike

CLIP PEDAL ALL MTN 6.0

LIGHTWEIGHT ALUMINUM TR/AM PEDAL



PART NO: DESCRIPTION:

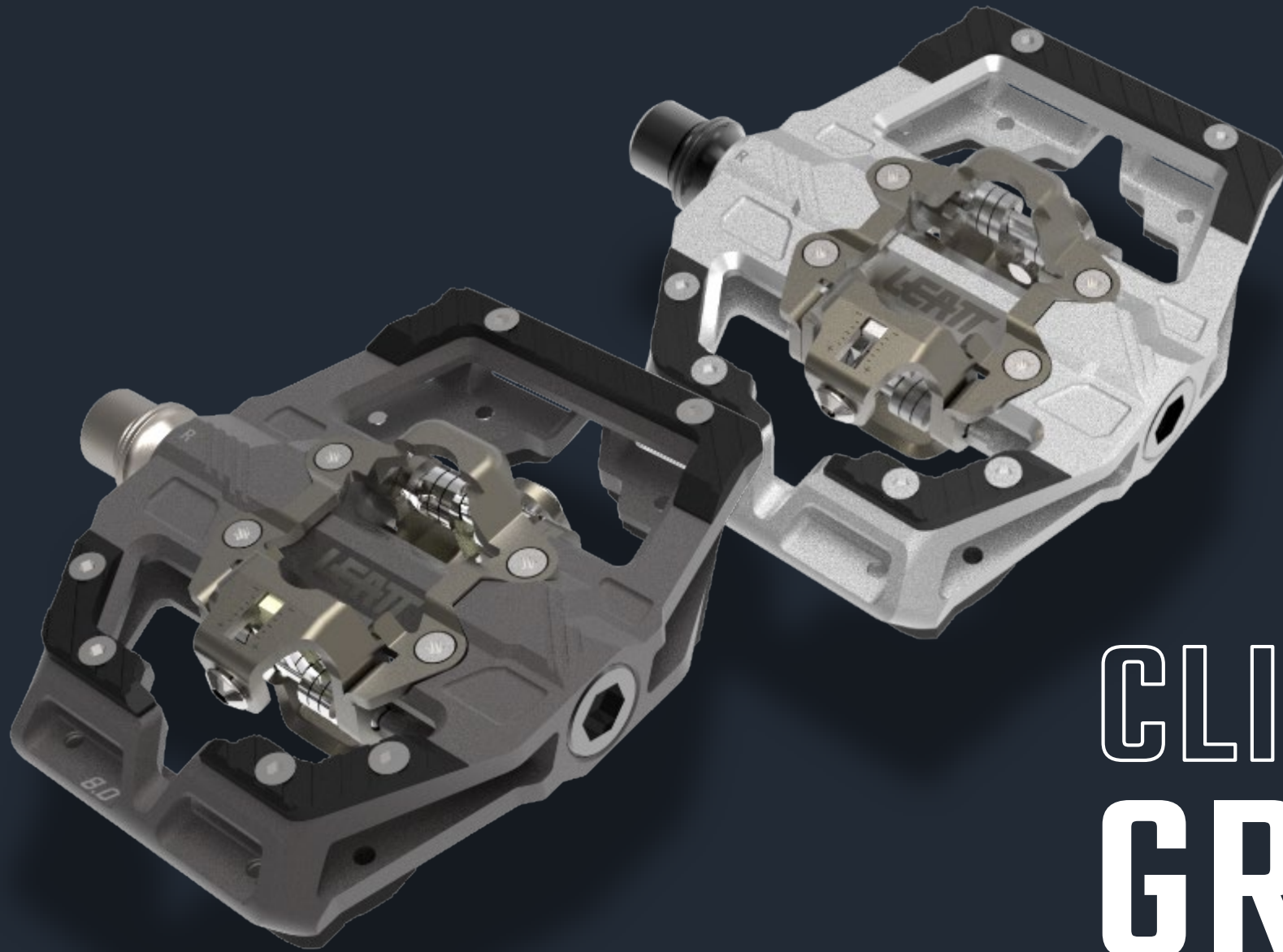
9025100630 Pedals AllMtn 6.0 Clip-in 95x70mm Black
9025100640 Pedals AllMtn 6.0 Clip-in 95x70mm Silver
9025100650 Pedals AllMtn 6.0 Clip-in 95x70mm Frost Bronze

NEW 25
PRODUCT

x x x

- **Medium-sized platform:** solid shoe support to enhance power transfer, plus **dropped front** portions facilitate shoe entry
- **Pins increase stability** and traction in technical situations when disengaged from the pedal.
- Main body **material.:** extruded and CNC 6061-T6 **Aluminum**
- **Shot-peened anodized surface finish** helps improve fatigue and reduces the risk of crack propagation.
- **Dual-sided clip-in** retention system:
 - positive engagement and feedback.
 - adjustable spring tension for consistent entry and release.
 - 5 degrees of free float
- **Ultimate Durability** with Leatt **Dual Seal & Triple Bearing** System
- **Spindle/axle: Forged and CNC SNCM220 chromoly steel**
- **Weight: 466 grams (pair)**





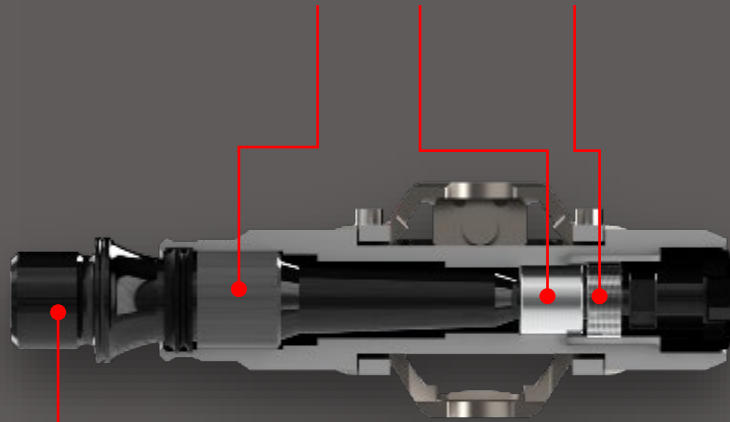
CLIP PEDAL
GRAVITY

CLIP PEDAL GRAVITY TECHNOLOGY

ULTIMATE DURABILITY

LEATT TRIPLE-BEARING SYSTEM

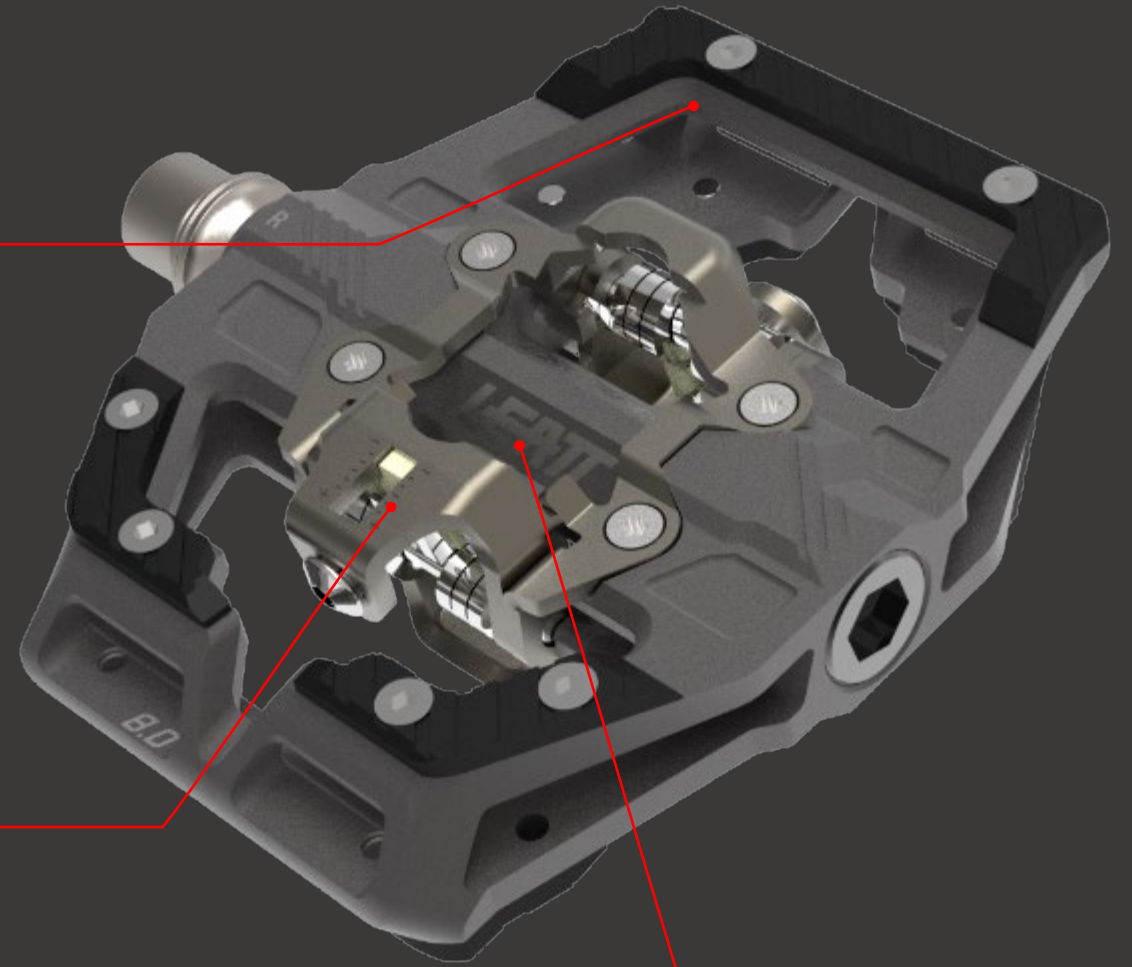
FOR LONG TERM DURABILITY IN HARSHTEST CONDITIONS



QUAD SEAL

MAXIMUM GRIP

Extra long platform with pins for traction in the most extreme riding conditions.



EASY TO SET/ READ

Straight forward entry/ release adjustment on all sides.

EASY IN & OUT

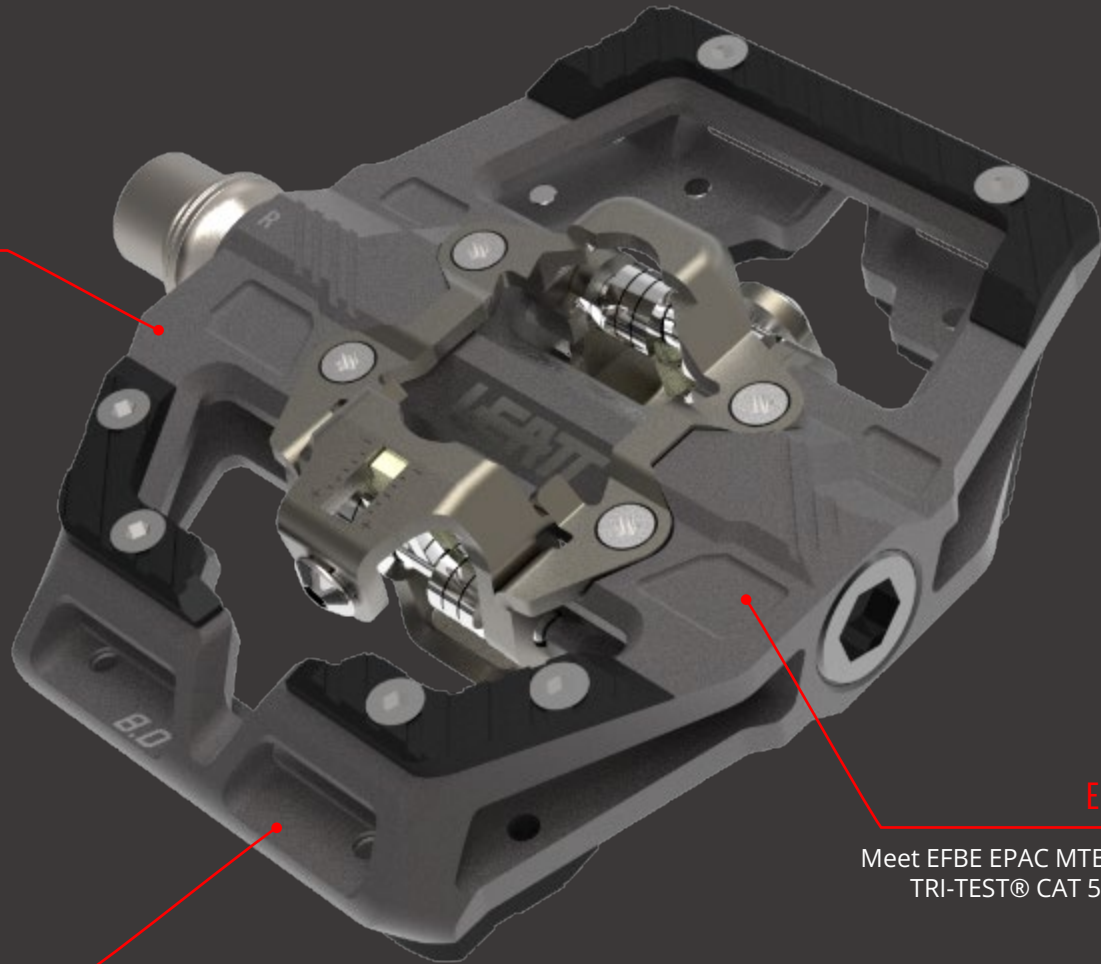
DUAL SIDED CLIP-IN RETENTION SYSTEM
SPD compatible with a positive engagement and feedback

CERAMAG

CLIP PEDAL GRAVITY CERMAG 8.0 TECHNOLOGY

CERAMIC COATING

Enhanced Durability for Lasting Protection



CERAMAG BODY

Leatt's exclusive CeraMAG alloy is stronger and lighter, transferring less vibration and is better for the environment than any comparable aluminums.

EFBE CAT 5

Meet EFBE EPAC MTB-GRAVITY TRI-TEST® CAT 5 Standard

CERAMAG

Specifications:

RETENTION SYSTEM: Dual-Side sided Clip-in, with adjustable release and entry tension

CLEAT SYSTEM: SPD compatible, 5° free float

SIZES: 110mm X 88mm X 20mm (L X W X H)

STANCE WIDTH: 57mm

PINS: 6 replaceable Stainless-steel pins per side or traction pads option

PLATFORM MATERIAL: Extruded and CNC machined Ceramag Magnesium

SPINDLE: Forged and CNC SNCM220 chromoly steel

INTERNALS: Leatt triple bearing construction (1x light self lubricating bushing, 1x needle bearing, 1x sealed roller bearing) and quad lip seal

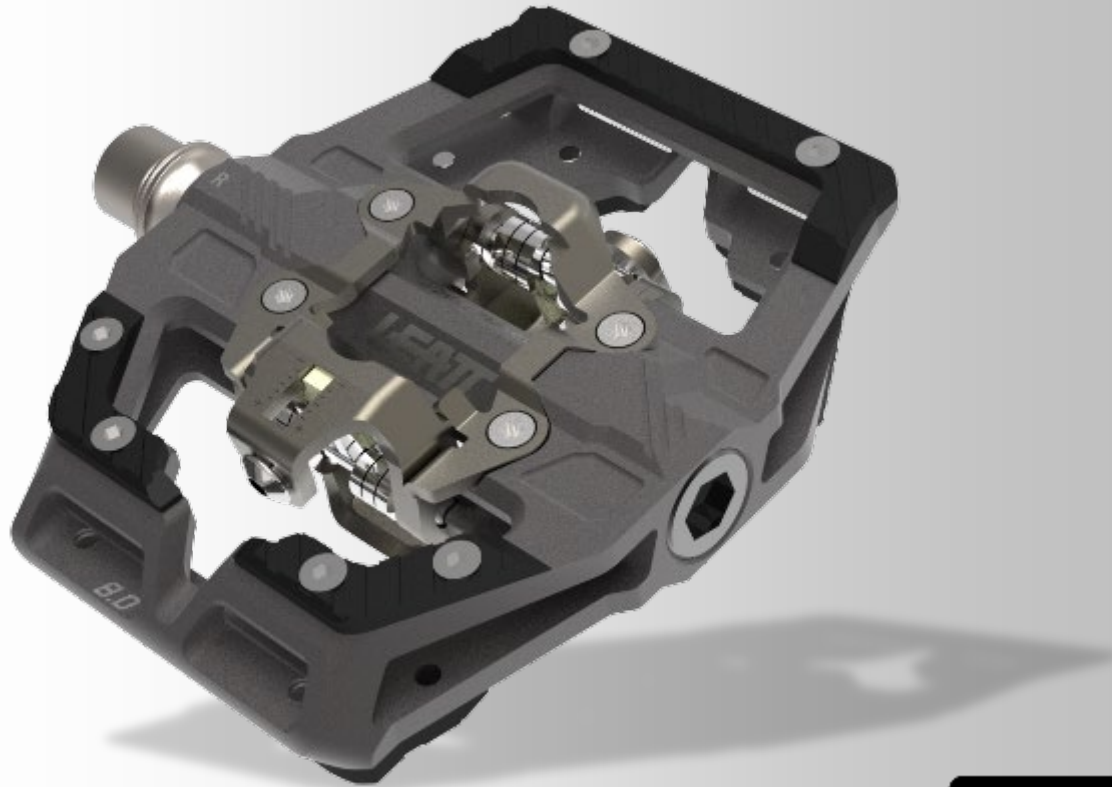
FINISH: Dual Ceramic protective coating

WEIGHT: 419 g

INTENDED USE : Downhill / Freeride / Enduro /All MTN/ Dirt jump / Slopestyle/ Trail / E-bike

CLIP PEDAL CERAMAG GRAVITY 8.0

HIGH-END LIGHTWEIGHT GRAVITY CLIP PEDAL

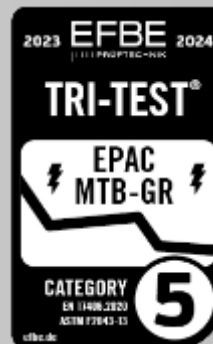


PART NO: **DESCRIPTION:**

9025100500 Pedals CeraMAG Gravity 8.0 Clip-in 110x88 CeraGrey



CERAMAG



**NEW 25
PRODUCT**

x x x

- **CeraMAG - Ceramic Coated Magnesium Alloy**
 - **Improved Ride comfort**
 - **Light weight**
 - **Strong**
 - **Recyclable**
- **CeraMAG vibration reduction** for great pedal contact
- **Ceramic coating** for maximum wear and corrosion durability
- **Large platform** provides a solid shoe support for optimize control and power transfer.
- **Platform and pins offer traction and stability** in technical situations when disengaged from the pedal.
- **Dual-sided clip-in** retention system:
 - positive engagement and feedback.
 - adjustable spring tension for consistent entry and release.
 - 5 degrees of free float
- Forged and CNC SNCM220 **chromoly steel axle**
- **EFBE-certified** according to **PAC GRAVITY TRI TEST standard (category 5)**, simulating a lifetime of riding for both electricized and non-electricized cyclists.
- **Ultimate Durability** with Leatt **Dual Seal & Triple Bearing** System
- **Weight: 419** grams

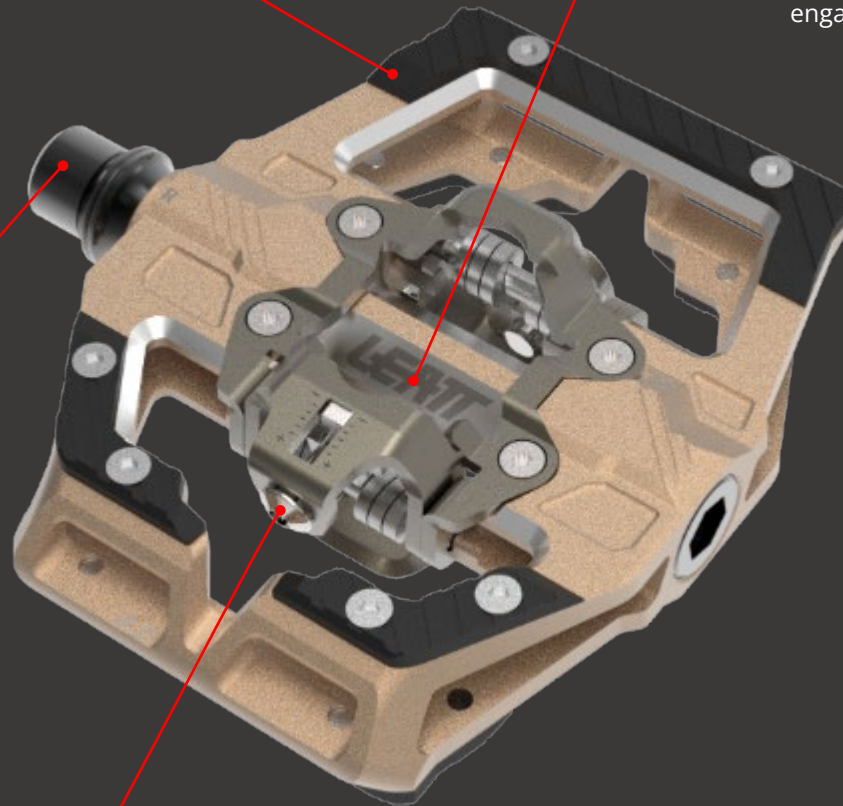
CLIP PEDAL GRAVITY 6.0 TECHNOLOGY

MAXIMUM GRIP

Extra long platform with pins or traction PAD for the most extreme riding conditions.

EASY IN & OUT

DUAL SIDED CLIP-IN RETENTION SYSTEM
SPD compatible with a positive engagement and feedback



ULTRA ROBUST

Optimal spindle support for long-term durability in the harshest conditions.

EASY TO SET/ READ

Straight forward entry/ release adjustment on all sides.

Specifications:

RETENTION SYSTEM: Dual-Side sided Clip-in, with adjustable release and entry tension

CLEAT SYSTEM: SPD compatible, 5° free float

SIZES: 110mm X 88mm X 20mm (L X W X H)

STANCE WIDTH: 57mm

PINS: 6 replaceable Stainless-steel pins per side or traction pads option

PLATFORM MATERIAL: Extruded and CNC 6061-T6 Aluminum

SPINDLE: Forged and CNC SNCM220 chromoly steel

INTERNALS: Leatt triple bearing construction (1x light self lubricating bushing, 1x needle bearing, 1x sealed roller bearing) and quad lip seal

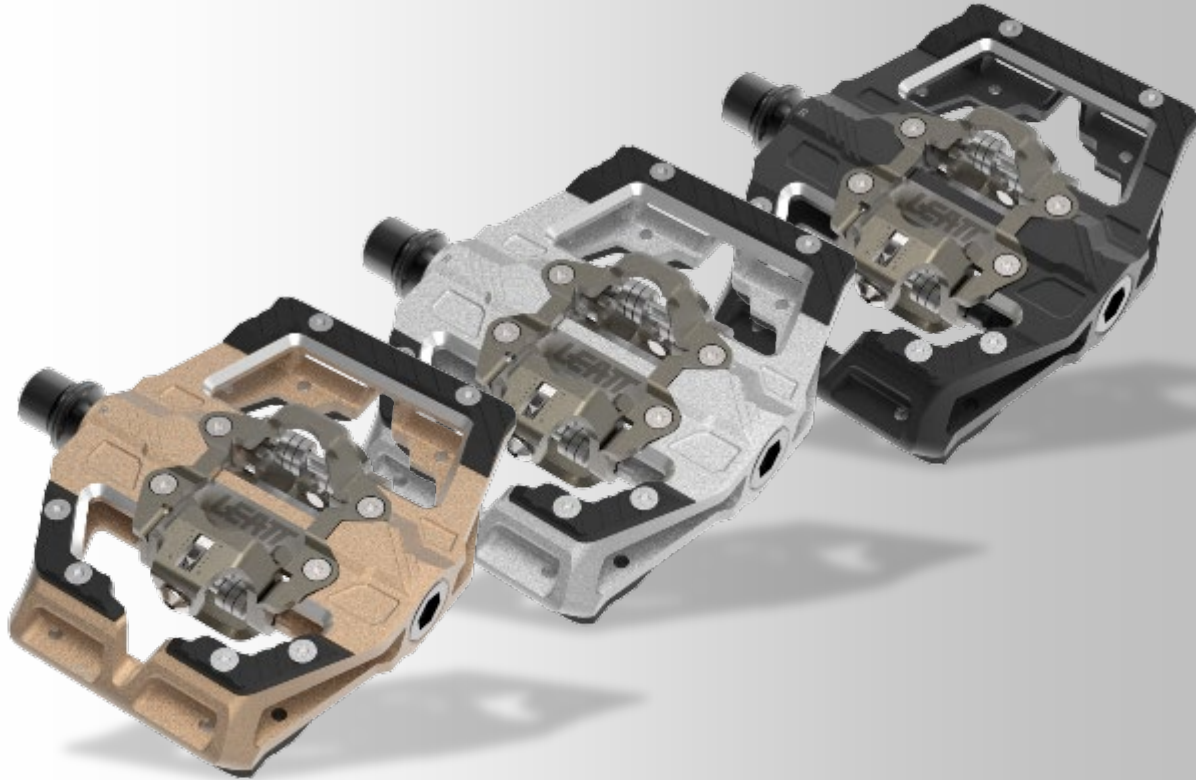
FINISH: Shot peened anodized and CNC

WEIGHT: 522 g

INTENDED USE : Downhill / Freeride / Enduro /All MTN/ Dirt jump / Slopestyle/ Trail / E-bike

CLIP PEDAL GRAVITY 6.0

ALUMINUM GRAVITY CLIP PEDAL



PART NO: DESCRIPTION:

9025100600 Pedals Gravity 6.0 Clip-in 110x88mm Black
9025100610 Pedals Gravity 6.0 Clip-in 110x88mm Silver
9025100620 Pedals Gravity 6.0 Clip-in 110x88mm Frost Bronze

NEW 25
PRODUCT

x x x

- **Large platform** provides a solid shoe support for optimize control and power transfer.
- **Platform and pins offer traction and stability** in technical situations when disengaged from the pedal.
- Main body **material**.: extruded and CNC 6061-T6 **Aluminum**
- **Shot-peened anodized surface finish** helps improve fatigue and reduces the risk of crack propagation.
- **Dual-sided clip-in** retention system:
 - positive engagement and feedback.
 - adjustable spring tension for consistent entry and release.
 - 5 degrees of free float
- **Ultimate Durability** with Leatt **Dual Seal & Triple Bearing** System
- **Spindle/axle: Forged and CNC SNCM220 chromoly steel**
- **Weight: 522 grams (pair)**



MTB COMPONENTS SPARE PARTS & ACCESSORIES



PART NO: **DESCRIPTION:**

9025100800 Pin Kit Pedals Diamond studs 40pcs 4mm Stainless Black
9025100810 Pin Kit Pedals Diamond studs 40pcs 4mm Stainless Silver



PART NO: **DESCRIPTION:**

9025100840 Spindle Kit Pedals Titanium pair



PART NO: **DESCRIPTION:**

9025100820 Pin Kit Pedals Medium 40pcs 8mm Stainless Black
9025100830 Pin Kit Pedals Medium 40pcs 8mm Stainless Silver

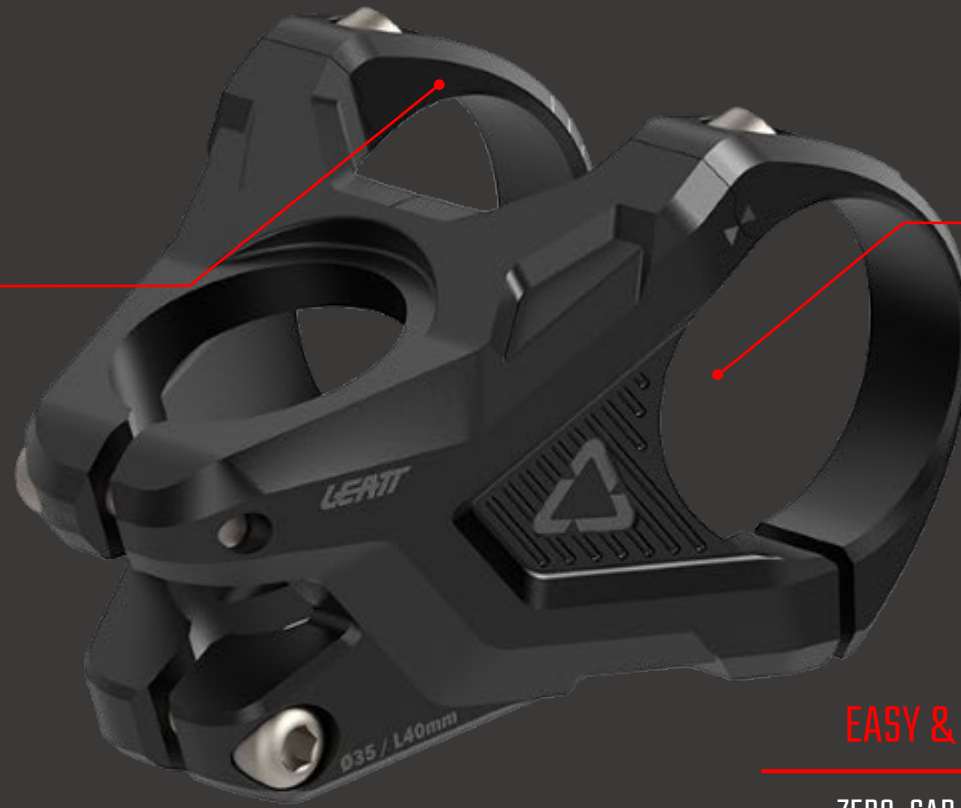


2025 COMPONENTS STEMS

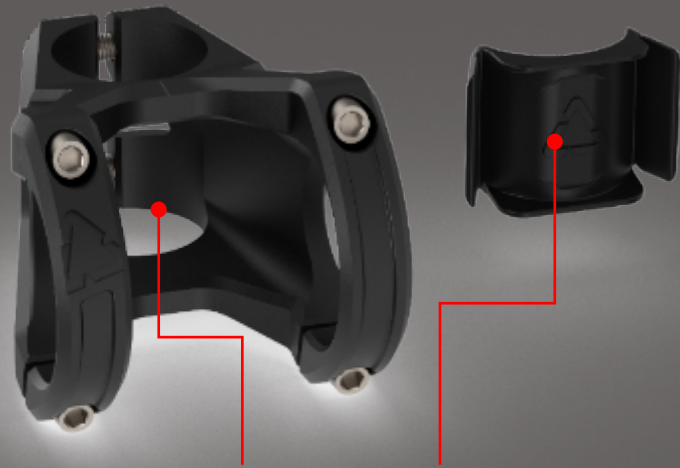
GENERAL STEM TECHNOLOGY

MAXIMUM CONTROL

Extra-wide 65mm clamp and 210° handlebar wrap: Optimized handlebar connection for maximum control and precision.



35mm BAR



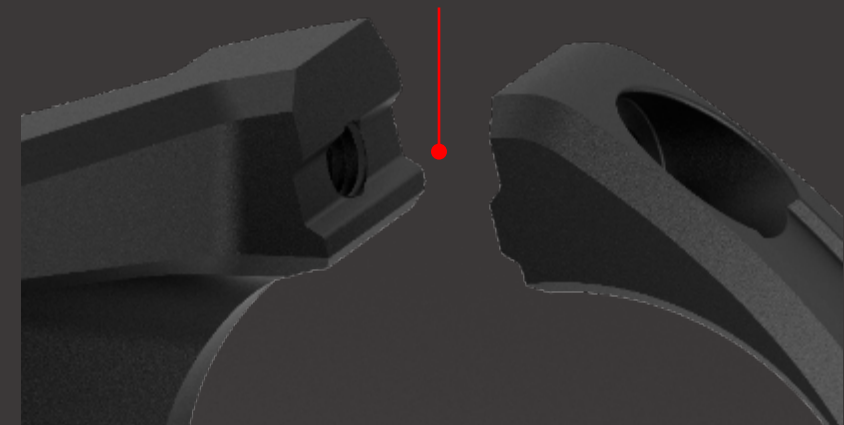
STEER TUBE SEAL CAP

Keeps the dirt out.

EASY & CLEAN INTALLATION

ZERO-GAP INTERLOCKING FACE PLATE

Remove the installation guesswork and keeps the handlebar secure.



CERAMAG

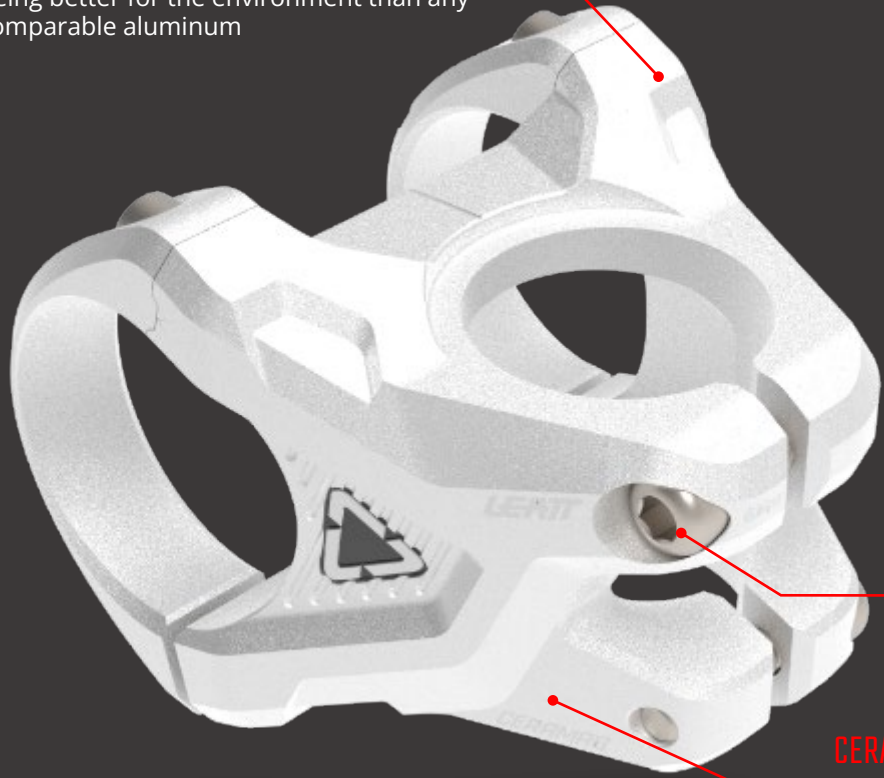


STEM
GRAVITY

CERAMAG GRAVITY 8.0TI & 8.0 STEM

CERAMAG MAGNESIUM

Leatt's exclusive CeraMAG alloy is stronger and lighter, transferring less vibration and being better for the environment than any comparable aluminum



CERAMAG

VERH LIGHT

From 93 grams for a Gravity stem



TITANIUM BOLTS

On 8.0 TI

CERAMIC COATING

Enhanced Durability for Lasting Protection

DIRECT CONTROL

Extra Wide (65mm) clamping area, for 35mm bars

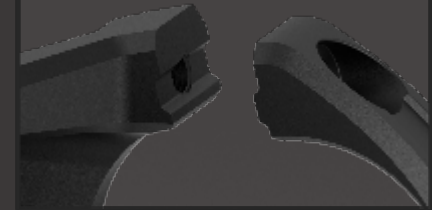


SUPER TOUGH

CeraMAG stems complying to EFBE EPAC MTB-GRAVITY TRI-TEST® CAT 5 STANDARD

ZERO-GAP INTERLOCKING FACE PLATE

Remove the installation guesswork and keep the handlebar secure



STEM GRAVITY 8.0TI & 8.0 SPECIFICATIONS



CERAMAG GRAVITY 35 8.0TI STEM

MATERIAL: Extruded and CNC machined **CeraMag Magnesium**

HARDWARE : 6AL-4v Titanium

WEIGHT: 93g(33m) / 95g (40mm) / 103g (50mm)



CERAMAG GRAVITY 35 8.0 STEM

MATERIAL: Extruded and CNC machined **CeraMag Magnesium**

HARDWARE : Black oxide steel

WEIGHT: 107g(33m) / 109g (40mm) / 117g (50mm)

CERAMAG GRAVITY 35 8.0Ti STEM

HIGH-END SUPER-LIGHTWEIGHT AM/EN/DH STEM



#33MM



#40MM



#50MM

PART NO:

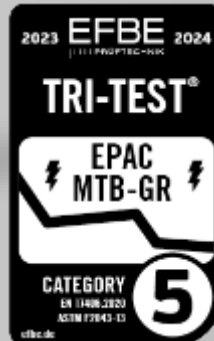
DESCRIPTION:

9025101000
9025101010
9025101020

Stem CeraMAG Gravity 8.0Ti #33mm Cera bone
Stem CeraMAG Gravity 8.0Ti #40mm Cera bone
Stem CeraMAG Gravity 8.0Ti #50mm Cera bone



CERAMAG



NEW 25
PRODUCT

x x x

- **CeraMAG Magnesium**, superior strength, lighter weight than aluminum, and effective vibration dampening properties.
- **Mute vibrations, reducing fatigue, and improving comfort and control.**
- **Intensive CNC machining** minimizes weight and defines our distinctive Leatt aesthetic.
- The **zero-gap faceplate and 210° handlebar wrap** to spread the clamping force evenly, reducing the risk of damaging the handlebar.
- **Interlocking faceplate** interface increases strength and makes installation easy.
- **Extra-wide clamping platform** for maximum control and steering precision.
- **Titanium bolts to further reduce the weight** - Round head bolts help protect your knee
- Our exclusive **steer tube seal cap** prevents dirt and debris from contaminating and damaging the steer tube.
- **Ceramic coating** for high wear resistance
- Tested to the **EFBE EPAC GRAVITY TRI-TEST® standard (category 5)**, the ultimate benchmark for strength and durability for all riding styles.
- Weight:
 - **33mm** - 93g
 - **40mm** - 95g
 - **50mm** - 103g

CERAMAG GRAVITY 35 8.0 STEM

HIGH-END LIGHTWEIGHT AM/EN/DH STEM



#33MM



#40MM



#50MM

PART NO:

DESCRIPTION:

9025101200
9025101210
9025101220

Stem CeraMAG Gravity 8.0 #33mm Cera Grey
Stem CeraMAG Gravity 8.0 #40mm Cera Grey
Stem CeraMAG Gravity 8.0 #50mm Cera Grey



CERAMAG



NEW 25
PRODUCT

- **CeraMAG Magnesium**, superior strength, lighter weight than aluminum, and effective vibration dampening properties. x x x
- **Mute vibrations, reducing fatigue, and improving comfort and control.**
- **Intensive CNC machining** minimizes weight and defines our distinctive Leatt aesthetic.
- The **zero-gap faceplate and 210° handlebar wrap** to spread the clamping force evenly, reducing the risk of damaging the handlebar.
- **Interlocking faceplate** interface increases strength and makes installation easy.
- **Extra-wide clamping platform** for maximum control and steering precision.
- **Steel bolts with** Round heads help protect your knee
- Our exclusive **steer tube seal cap** prevents dirt and debris from contaminating and damaging the steer tube.
- **Ceramic coating** for high wear resistance
- Tested to the **EFBE EPAC GRAVITY TRI-TEST® standard (category 5)**, the ultimate benchmark for strength and durability for all riding styles.
- Weight:
 - **33mm** - 107g
 - **40mm** - 109g
 - **50mm** - 117g

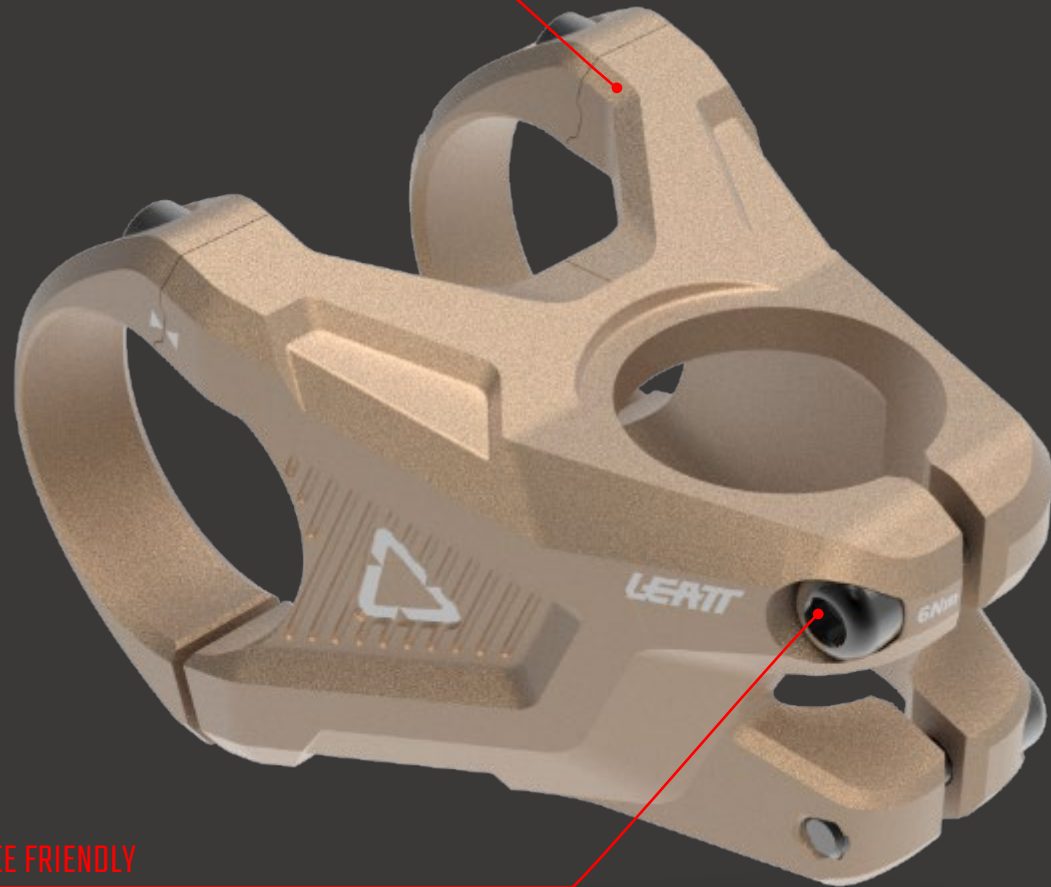
GRAVITY 35 6.0 STEM

FORGED AND MACHINED 7075 ALUMINUM

Skilfully crafted for Superior strength, fatigue and impact resistance

35MM BAR CLAMP

Ultra-responsive steering



KNEE FRIENDLY

Rounded steerer clamp and head bolts

Specifications :

LENGTHS AVAILABLE: 33mm / 40 mm / 50mm

BAR CLAMP DIAMETER: Ø35mm

STEERER CLAMP 28.6mm

RISE: 0°

BAR CLAMP WIDTH: 65mm

STACK HEIGHT: 38mm

MATERIAL:

Forged and CNC aluminum 7075-T6

HARDWARE: Black oxide steel

TORQUE SPEC: 6Nm.

FINISH: Shot peened anodized

WEIGHT:

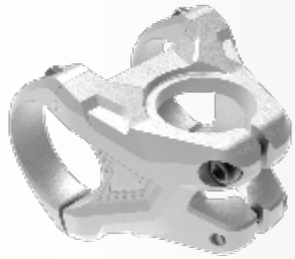
141g(33m) / 149g (40mm) / 163g (50mm)

INTENDED USE:

Downhill / Freeride / Enduro /All MTN/ Dirt jump / Slopestyle/ Trail / E-bike

GRAVITY 35 6.0 STEM

ALUMINUM AM/EN/DH STEM



#33MM



#40MM



#50MM

NEW 25
PRODUCT

x x x

- **Cold-forged and CNC-machined from 7075 Aluminum** for optimized structural integrity and consistent performance under heavy stress.
- **Intensive CNC machining** minimizes weight and defines our distinctive Leatt aesthetic.
- The **zero-gap faceplate and 210° handlebar wrap** to spread the clamping force evenly, reducing the risk of damaging the handlebar.
- **Interlocking faceplate** interface increases strength and makes installation easy.
- **Extra-wide clamping platform** for maximum control and steering precision.
- **Steel bolts with** Round heads help protect your knee
- Our exclusive **steer tube seal cap** prevents dirt and debris from contaminating and damaging the steer tube.
- Weight:
 - **33mm** -141g
 - **40mm** - 149g
 - **50mm** - 163g



GRAVITY 35 6.0 STEM

ALUMINUM AM/EN/DH STEM - 3 LENGTHS - 3 COLORS

**NEW 25
PRODUCT**

x x x



#33MM



#33MM



#33MM



#40MM



#40MM



#40MM



#50MM



#50MM



#50MM

PART NO: DESCRIPTION:

- 9025101400 Stem Gravity 6.0 #33mm Black
- 9025101410 Stem Gravity 6.0 #40mm Black
- 9025101420 Stem Gravity 6.0 #50mm Black

PART NO: DESCRIPTION:

- 9025101430 Stem Gravity 6.0 #33mm Silver
- 9025101440 Stem Gravity 6.0 #40mm Silver
- 9025101450 Stem Gravity 6.0 #50mm Silver

PART NO: DESCRIPTION:

- 9025101450 Stem Gravity 6.0 #33mm Frost Bronze
- 9025101460 Stem Gravity 6.0 #40mm Frost Bronze
- 9025101470 Stem Gravity 6.0 #50mm Frost Bronze



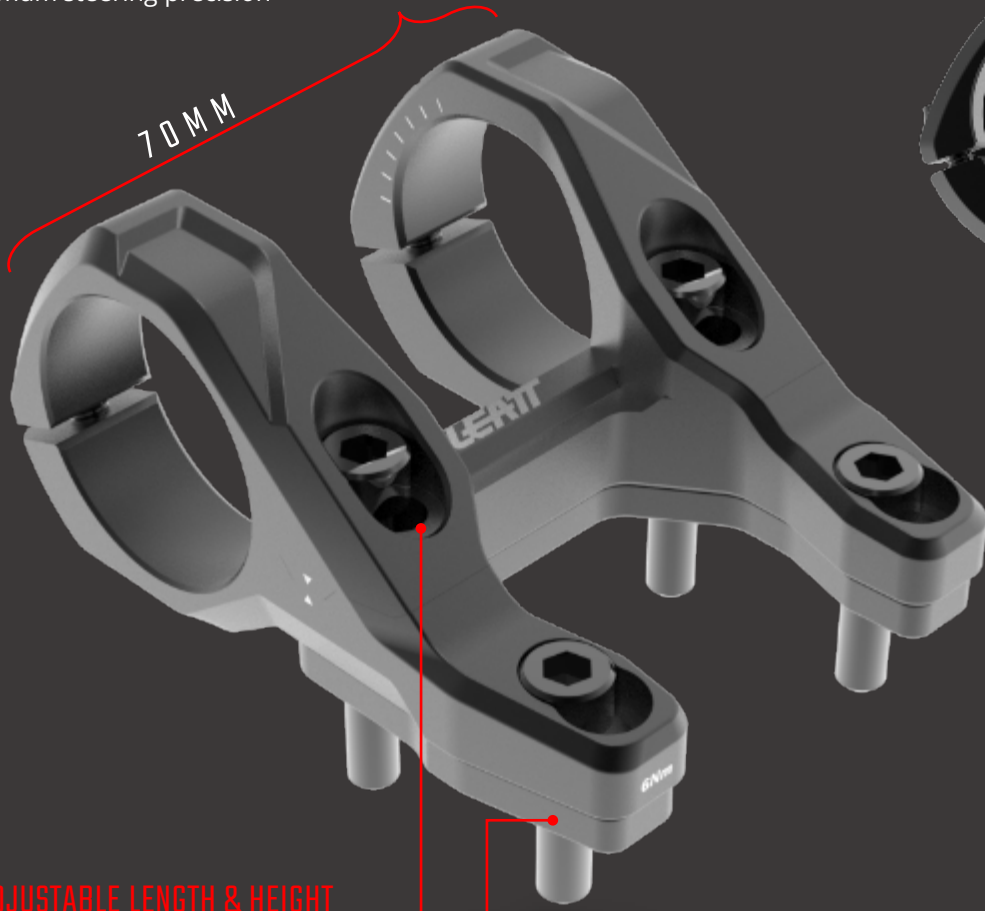
STEM

GRAVITY

GRAVITY DM35 6.0 STEM

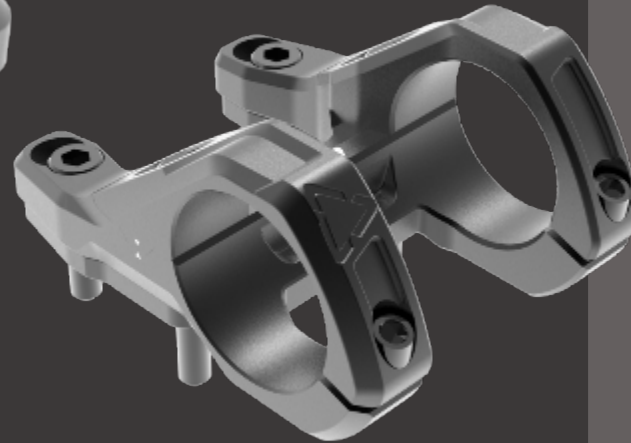
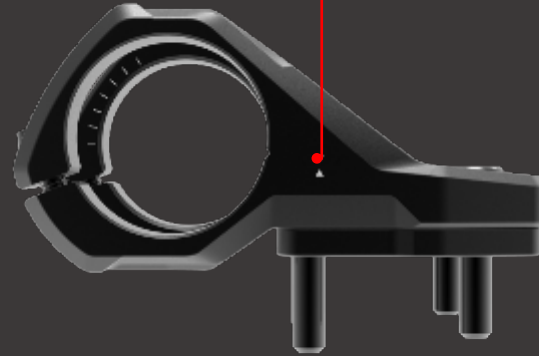
MAXIMUM CONTROL

EXTRA-WIDE 70MM CLAMP & 200° HANDLEBAR WRAP
Optimized handlebar connection for maximum steering precision



EASY MOUNTING

ZERO GAP INTERLOCKING FACE PLATE
Removes the installation guesswork



ADJUSTABLE LENGTH & HEIGHT

Tailored your riding position to the track

Specifications :

LENGTHS AVAILABLE: 2-Positions 45/55mm

BAR CLAMP DIAMETER: Ø35mm

STEERER CLAMP: Boxxer/ FOX IS direct mount

STACK: 0mm / + 5mm with spacer

BAR CLAMP WIDTH: 70mm

STACK HEIGHT: N/A

MATERIAL: CNC Aluminum 7075-T6

HARDWARE: Black oxide steel

TORQUE SPEC: 6Nm.

FINISH: Shot peened anodized

WEIGHT: 171g

INTENDED USE : Downhill / Freeride / E-bike

GRAVITY DM35 6.0 STEM

HARDCORE DH DIRECT-MOUNT STEM



PART NO: **DESCRIPTION:**

9025101800 Stem Gravity DM 6.0 Black



**NEW 25
PRODUCT**

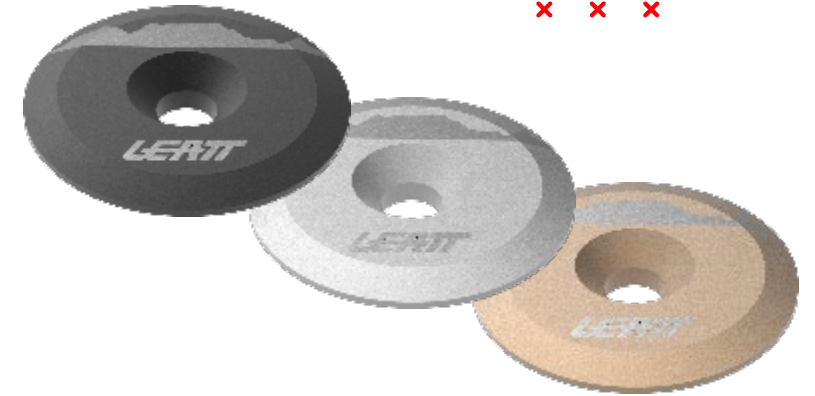
x x x

- Precision **CNC-machined from 7075 Aluminum**
- **Lightweight design without compromising on strength**
- **Attaches directly to** a triple clamp / **DH fork** for sharper and more precise steering.
- **Adjustable in length and height** (5mm each), to customize your fit for the course.
- The **zero-gap faceplate and 200° handlebar wrap** securely hold the handlebar, distributing clamping force evenly.
- Our **interlocking faceplate** interface increases strength and makes installation a breeze.
- Chamfering around the handlebar clamping area reduces stress on the handlebar during load-bearing.
- **Extra-wide 70mm clamping** platform for unparalleled control and steering precision.
- **Weight: 171g**

STEMS HARDWARE PARTS

**NEW 25
PRODUCT**

x x x



PART NO:	DESCRIPTION:
9025101900	Top Cap Headset CeraMAG Ti Bolt CeraBone
9025101910	Top Cap Headset CeraMAG Ti Bolt CeraGrey

PART NO:	DESCRIPTION:
9025101920	Top Cap Headset CeraMAG CeraBone
9025101930	Top Cap Headset CeraMAG CeraGrey

PART NO:	DESCRIPTION:
9025101940	Top Cap Headset Black
9025101950	Top Cap Headset Silver
9025101960	Top Cap Headset Frost Bronze



PART NO:	DESCRIPTION:
9025101970	Spacer Kit Headset CeraMAG 10/5/2.5/1.5mm CeraBone
9025101980	Spacer Kit Headset CeraMAG 10/5/2.5/1.5mm CeraGrey

PART NO:	DESCRIPTION:
9025101990	Spacer Kit Headset 10/5/2.5/1.5mm Black
9025102000	Spacer Kit Headset 10/5/2.5/1.5mm Silver
9025102010	Spacer Kit Headset 10/5/2.5/1.5mm Frost Bronze





2025 COMPONENTS HANDLEBAR

MTB HANDLEBAR KIT - LAUNCH CONTROL 35 6.0 Ø35mm 7000 Series

LIGHT AND STRONG

Crafted to out 7050 Aluminum for a sub 285g weight, tested to meet EFBE EPAC MTB-GRAVITY TRI-TEST® CAT 5 standard

VERSATILE GEOMETRY

800mm wide, 35mm diameter with 9° Back sweep available two rise options (38mm / 23mm)

WIDE CLAMPING AREA

100mm to fit any style of stem and Torsional stiffness

ROBUST FINISHING

Increases durability and resistance to fatigue

REFLEX 6.0 GRIPS INCLUDED

MAXIMUM VIBRATION DAMPING

Infused with Reflex energy absorbing anti-vibration material, improving control while reducing hand fatigue and arm pumps



MTB HANDLEBAR KIT - LAUNCH CONTROL 35 6.0

ø35mm AM/EN/DH 7000 ALUMINUM BAR



NEW 25
PRODUCT

× × ×

- **Includes Reaflex 6.0 grips** with energy-absorbing **Reaflex gel**, noticeably **reducing vibrations** transmitted to the rider, reducing hand fatigue and arm pumps
- Crafted from **7050 Aluminum** for optimal balance of strength, weight, and durability
- Engineered for high toughness, enabling it to withstand sudden shocks and impacts without structural damage.
- **Optimized wall thickness** for **reduced weight (±284g)** and improved compliance.
- Shot-peened for **increased fatigue strength** and enhanced durability
- **Wide clamping area**
- Front and top centre **guides make stem alignment and cut to length easy**
- **Weight:**
 - **Bar:** 284g
 - **Grips:** 106g (pair)



MTB HANDLEBAR KIT - LAUNCH CONTROL 35 6.0

NEW 25
PRODUCT

x x x

ø35mm AM/EN/DH 7050 ALUMINUM BAR



PART NO: DESCRIPTION:

9025102100 Handlebar Kit Launch Control 35 6.0 #Mid 23/9/800mm Blast Black
9025102110 Handlebar Kit Launch Control 35 6.0 #Hi 38/9/800mm Blast Black

PART NO: DESCRIPTION:

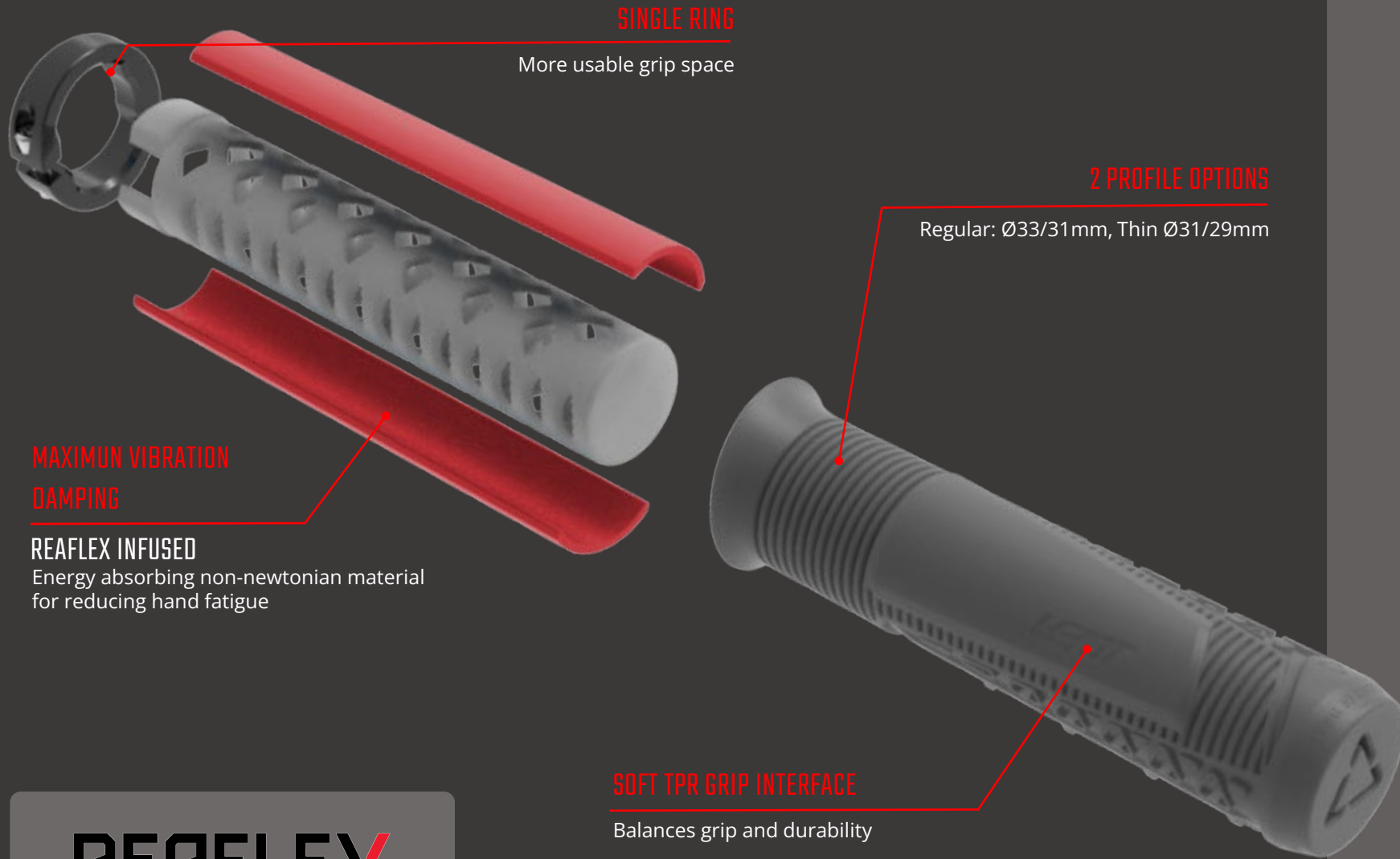
9025102120 Handlebar Kit Launch Control 35 6.0 #Mid 23/9/800mm Blast Silver
9025102130 Handlebar Kit Launch Control 35 6.0 #Hi 38/9/800mm Blast Silver



2025 COMPONENTS

GRIP

GRIPS REAFLEX 6.0 #THIN/REGULAR



SINGLE RING

More usable grip space

2 PROFILE OPTIONS

Regular: Ø33/31mm, Thin Ø31/29mm

MAXIMUM VIBRATION DAMPING

REAFLEX INFUSED

Energy absorbing non-newtonian material for reducing hand fatigue

SOFT TPR GRIP INTERFACE

Balances grip and durability

Specifications:

MATERIAL:

Reaflex Gel infused core,

with 25 shore A TPR over moulding

LENGTH: 135mm

RETENTION: Single Aluminum lock ring

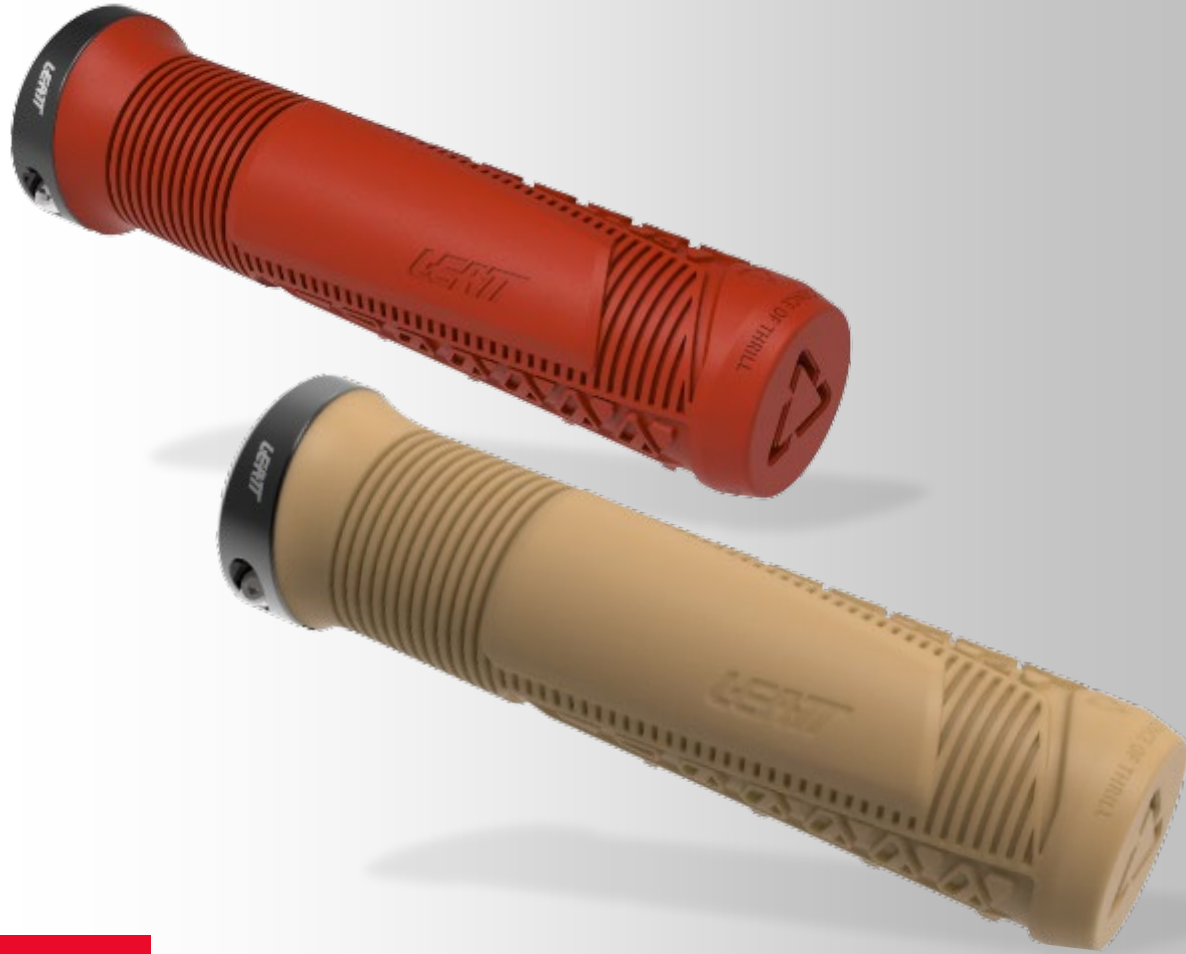
ENDS: Closed end with bump protection

WEIGHT : ±106g / pair

REAFLEX

GRIPS REAFLEX 6.0 #THIN/REGULAR

UNIQUE DAMPING AND GRIP CHARACTERISTICS



NEW 25
PRODUCT

x x x

- The grip core is infused with our energy-absorbing non-newtonian **Reaflex gel**, noticeably **reducing vibrations** transmitted to the rider, thus reducing hand fatigue and arm pumps.
- Soft 25A TPR overlay for **improved tactile feel and balanced durability**.
- A **single** inboard **lock ring** enhances usable grip space. Installation and positioning are made easy with a 3mm Allen wrench to prevent rounding bolts.
- **Available in a regular 33/31mm and thin 31/29mm** variation.
- The variable diameter taper profile with more material on the outer edge, where more contact is made, reduces hand pressure and enhances damping further.
- Central bump pad palm support reduces hand fatigue and improves impact protection.
- Soft flexible ribs around the thumb and forefinger area improve gripping and prevent slipping.
- Half Waffle and triangular tread blocks provide extra finger traction and control.
- Bump protection bar ends protect handlebars, cars, and walls.
- Weight: ±106g / pair



REAFLEX

GRIPS REAFLEX 6.0 #THIN/REGULAR

NEW 25
PRODUCT

UNIQUE DAMPING AND GRIP CHARACTERISTICS - SLIM & WIDE - 4 COLORS

x x x



PART NO: **DESCRIPTION:**

9025102300 Grips ReaFlex 6.0 # Thin Black
9025102340 Grips ReaFlex 6.0 # Regular Black



PART NO: **DESCRIPTION:**

9025102310 Grips ReaFlex 6.0 # Thin Lava
9025102350 Grips ReaFlex 6.0 # Regular Lava



PART NO: **DESCRIPTION:**

9025102320 Grips ReaFlex 6.0 # Thin Peanut
9025102360 Grips ReaFlex 6.0 # Regular Peanut



PART NO: **DESCRIPTION:**

9025102330 Grips ReaFlex 6.0 # Thin Granite
9025102370 Grips ReaFlex 6.0 # Regular Granite

2025 COMPONENTS WATERBOTTLES



MTB WATER BOTTLE - STEADYSIP CONVERTIBLE

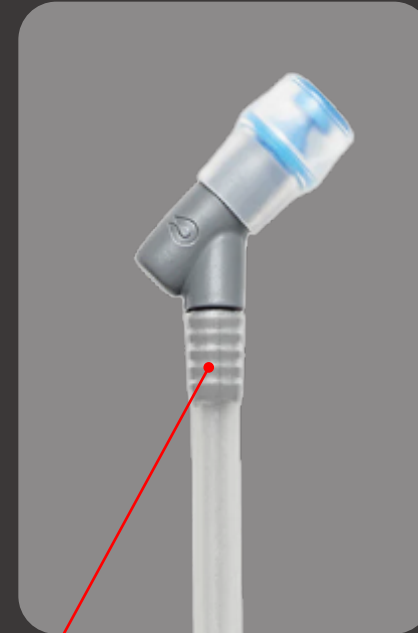


UPRIGHT DRINKING

Keeps you safe with your eyes on the trail

HYDRAPAK VALVE & EXTENSION

Choose between a bite valve or a drink tube extension, to make hydration a breeze even with a full face-helmet



SAFETY INCREASE:

Upright drinking minimizes head movement and helps you **keep your eyes on the trail or road, while drinking.**

Minimize distraction, maximize riding safety.

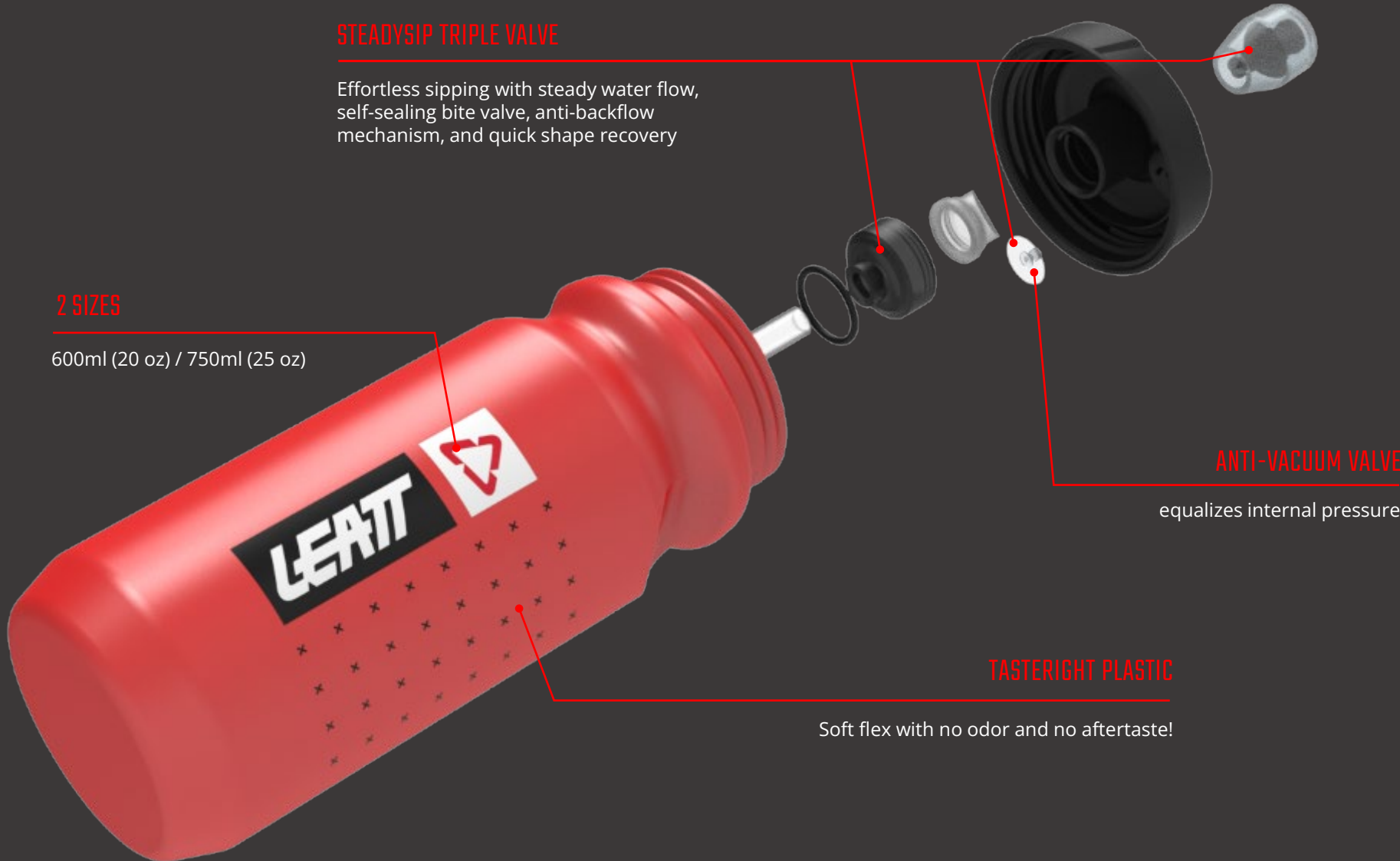
MTB WATER BOTTLE - STEADYSIP CONVERTIBLE

STEADYSIP TRIPLE VALVE

Effortless sipping with steady water flow, self-sealing bite valve, anti-backflow mechanism, and quick shape recovery

2 SIZES

600ml (20 oz) / 750ml (25 oz)



ANTI-VACUUM VALVE

equalizes internal pressure

TASTERIGHT PLASTIC

Soft flex with no odor and no aftertaste!

Specifications:

CAP: SteadySip triple valve upright drinking w/ drinking straw

SPOUT: replaceable Hydrapak silicone BLASTER™ bite valve W/ adjustable drink tube extension

BOTTLE MATERIAL: TasteRight polypropylene

CAPACITY: 600ml (20 oz) / 750ml (25 oz)

WEIGHT: 69g (600ml) / 75g (750ml)

SAFETY: food safe, BPA, BPS, BPF, Phthalates free

MTB WATER BOTTLE - STEADYSIP CONVERTIBLE

SAFETY-ENHANCING MAX-FLOW BOTTLE



INCLUDES HYDRAPAK
DRINK TUBE EXTENSION



NEW 25
PRODUCT

x x x

- Innovative water dispensing system designed with **safety** in mind.
- **Upright drinking** helps you **keep your eyes on the trail while drinking.**
- The **triple valve system assures easy sipping with a constant and steady flow of water:**
 - The **Hydrapak BLASTER™ bite valve self-seals** after each sip.
 - A second, internal valve prevents water from coming back down the straw, **keeping water ready** and requiring less effort for **water to move up.**
 - **A third Anti-vacuum valve equalizes internal pressure**, popping the bottle back to shape faster.
- **Includes Hydrapak drink tube extension.** Very helpful wearing a full-face helmet.
- The lipped cap provides extra grip to remove the bottle from the holder.
- TasteRight plastic is **odorless and without aftertaste.**
- The wide fill opening makes it ice cube friendly.
- Disassembles for easy cleaning
- Available in **600ml and 750ml versions.**
- Weight: 69g / 75g



MTB WATER BOTTLE - STEADYSIP CONVERTIBLE

NEW 25
PRODUCT

SAFETY-ENHANCING MAX-FLOW BOTTLE

x x x



PART NO	DESCRIPTION:
9025102520	Bottle SteadySip Convertible 600 Smoke

PART NO	DESCRIPTION:
9025102500	Bottle SteadySip Convertible 750 Smoke

PART NO	DESCRIPTION:
9025102530	Bottle SteadySip Convertible 600 Fire

PART NO	DESCRIPTION:
9025102510	Bottle SteadySip convertible 750 Fire

MTB WATER BOTTLE - DUOVALVE

ANTI VACUUM TECHNOLOGY

Equalizes internal pressure for fast bottle reset

TASTERIGHT PLASTIC

Soft flex with no odor and no aftertaste!

ALL FLOW, ZERO LEAKS !

Self-sealing high volume spout

2 SIZES

600ml (20 oz) / 750ml (25 oz)

Specifications:

CAP: Duovalve cap with anti-vacuum technology

SPOUT: Self-sealing high flow silicone valve

BOTTLE MATERIAL: TasteRight polypropylene

CAPACITY: 600ml (20 oz) / 750ml (25 oz)

WEIGHT: 58.5g (600ml) / 64.8g (750ml)

SAFETY: food safe, BPA, BPS, BPF, Phthalates free



MTB WATER BOTTLE - DUOVALVE

MAX-FLOW BOTTLE



NEW 25
PRODUCT

x x x

- **Dual valve construction** combines a **high-volume self-sealing spout with anti-vacuum valve** that **equalizes internal pressure** to reset the bottle faster for your next squeeze or to put it back in its cage.
- Spout can be closed for extra protection while traveling.
- Easy disassemble for cleaning
- TasteRight plastic is **odorless and without aftertaste.**
- The wide fill opening makes it ice cube friendly.
- Available in 600ml and 750ml versions.
- Weight: 58.5g / 64.8g



MTB WATER BOTTLE - DUOVALVE

NEW 25
PRODUCT

MAX-FLOW BOTTLE

x x x



PART NO **DESCRIPTION:**
9025102620 Bottle DuoValve 600 Smoke



PART NO **DESCRIPTION:**
9025102600 Bottle DuoValve 750 Smoke



PART NO **DESCRIPTION:**
9025102630 Bottle DuoValve 600 Fire



PART NO **DESCRIPTION:**
9025102610 Bottle DuoValve 750 Fire



2025 COMPONENTS

MATRIX