



Transporter Travel

NEW

UPDATED

Rugged, reliable and designed for all forms of adventure, this season's Transporter travel carry solutions have been engineered to be lighter without sacrificing durability. Impeccable construction and functional design merge to produce bags capable of navigating both remote mountain ranges and bustling urban environments with ease. Tough, weatherproof material shields from external elements while adhering to bluesign® CRITERIA, leaving no room for compromise.

CONSUMER PROFILE:

- Travelers and everyday users prepared for adverse conditions
- Require highly durable, reliable carry solutions that hold up to adventures big and small
- Appreciate simple, versatile gear that can do it all



PHOTO: TERRANCE SIMON



**OSPREY
TRANSPORTER**



**PATAGONIA
BLACK HOLE**



**THE NORTH FACE
BASE CAMP**

SRP	£145 / €160	£180 / €199	£135 / €150
WEIGHT	1210g - (65L)	1365g - (70L)	1590g (Medium – 71L)
COLOURS	5	5	9
FABRIC	630d & 840d Recycled HT Nylon Ripstop	900D Recycled Polyester Ripstop	840D Recycled Ballistic Nylon
COATING	Nanotough coating	Recycled TPU coating	PVC coating
CREDENTIALS	bluesign®	Fairtrade	N/A

S25 TRANSPORTER

NYLON 630D RIP-STOP



NYLON 840D NANO-TOUGH



YKK EYL ZIPPERS



HIGH ROAD CHASSIS



TRAVEL PULLER



AIRSCAPE

S25 TRANSPORTER DUFFELS

- NEW MATERIALS, COLOUR & LINING
- 2 NEW SIZES
- REFINED HARNESS
- UPDATED LASHING
- SHOULDER STRAP COMP.
- NEW P.O.P PACK BAG
- DURABLE YKK EYL ZIPPERS



S25 TRANSPORTER WHEELED DUFFELS

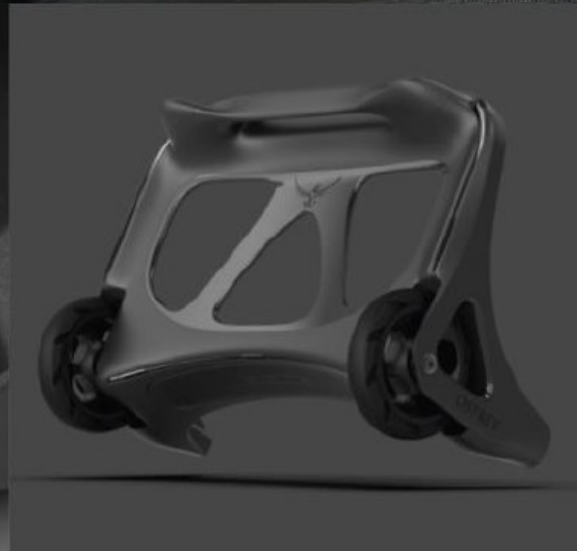
- NEW MATERIALS, COLOUR & LINING
- UPDATED LASHING
- DURABLE YKK EYL ZIPPERS
- NEW OSPREY HANDLE
- HIGH ROAD CHASSIS
- 90mm + 11mm WHEEL
- INTERIOR POCKETS
- ADD A BAG STRAP
- ID TAG



120L

40L

UPRIGHT C/O



REVISED HIGHROAD CHASSIS



S25 TRANSPORTER TRAVEL PACKS

- NEW MATERIALS, COLOUR & LINING
- NEW 35L SIZE
- REFINED HARNESS
- UPDATED LASHING
- SHOULDER STRAP COMP.
- NEW BOTTLE POCKET
- NEW AIRSCAPE BACKPANEL



S25 TRANSPORTER SQUFFELS

- NEW MATERIALS, COLOUR & LINING
- EXTERNAL ID SLEEVE & QUICK ACCESS POCKET
- INTERNAL MESH POCKETS & DIVIDERS
- VENTILATION ZIPPER
- DETACHABLE HARNESS
- TWO INTERNAL COMPRESSION STRAPS SECURE LOAD
- DURABLE YKK EYL ZIPPERS



44L

70L



ID SLEEVE & QUICK ACCESS POCKET



DETACHABLE HARNESS



INTERNAL DIVIDERS



S25 TRANSPORTER ACCESSORIES

- NEW MATERIALS, COLOUR & LINING
- REDESIGN INTERIOR POCKETS
- UPDATE TO NEW LINER: RECYCLED POLY 70D FACE NANOTOUGH COATING (TOILETRY KIT)



TOILETRY KIT



TOILETRY KIT LARGE



POWER HOUSE



UNISEX
TRANSPORTER
GEAR TOTE 60L

NEW



GEAR HAULER

Larger tote bag includes a detachable shoe change mat, which can also function as a lid or provide extra stability as a base. An exterior zippered pocket and interior mesh pockets offer additional organization.



UNISEX
TRANSPORTER
GEAR TOTE 28L

NEW



GEAR HAULER

Smaller tote bag equipped with an external zippered pocket and interior mesh drop pockets. Designed to neatly fit into the Gear Tote 60L for seamless organization.



2 x 28 TOTES FIT INSIDE FOR MORE ORGANIZATION



Talon | Tempest

UPDATED

SELECT VOLUMES & COLORS
AVAILABLE IN EXTENDED FIT

One of the most versatile technical pack series ever created, the Talon/Tempest is designed to accommodate dynamic body movement, whether you're on foot, bike, skis, or board. Featuring a ventilated and close-to-body fit that moves with you across any terrain with Pro Series sliding yoke technology for more accurate fine-tuning. Borrowing insight from our Talon Earth program, this series is updated with a recycled framesheet, mesh, webbing and 50% recycled foam*. From lumbar packs to ultralight backpacks, the legendary Talon/Tempest Series offers a range of styles, each providing optimal stability, recycled fabric*, and suitable features—all within a lightweight package designed to support both big and small adventures alike. *See the next page for details.

CONSUMER PROFILE:

- Hikers, bikers and multi-sport users
- Enjoy a variety of sports and need a pack that will keep up
- Prefer a lightweight pack to support big and small adventures alike



TALON / TEMPEST 2025



TALON | TEMPEST
44



TALON | TEMPEST
33



TALON | TEMPEST
26



TALON | TEMPEST
22



TALON | TEMPEST
11



TALON | TEMPEST
JR



TALON | TEMPEST
6



LEARNINGS FROM TALON PRO

- LEVERAGES OUR 5TH GEN MOLDED FRAMESHEET
- IMPROVED FIT AND EASIER ADJUSTMENT
- WIDER 5" ADJUSTMENT RANGE
- O/S PER GENDER FOR MOST PACKS
- IMPROVES PACK STRUCTURE
- SUSTAINABLE DESIGN



LEARNINGS FROM TALON EARTH

- 50% RECYCLED EVA FOAM
- 80% RECYCLED MESH
- 100% RECYCLED WEBBING
- 100% RECYCLED POLYPROPYLENE FRAMESHEET
- BIO-BASED PLASTIC HARDWARE



LEARNINGS FROM TALON VELOCITY

- SHARPER SHAPE AND BALANCE
- NEW LIDLOCK ON SELECT PACKS
- IMPROVED ZIP PATHING
- IMPROVED BUNGEE RETENTION
- FRESH COLOURS



OSPREY
TALON | TEMPEST



DEUTER
TRAIL



GREGORY
MIKO/MAYA



RAB
AEON



MAMMUT
LITHIUM/LITHIA

VOLUMES & PRICES	6L - €85 11L - €130 22L - €140 26L - €150 33L - €170 44L - €190	18L / 16SL - €125 24L / 22SL - €135 25L / 23SL - €135 30L / 28SL - €145	15L - €130 20L - €140 25L - €150 30L - €165	20L / ND18L - €140 27L / ND25L - €150 35L / ND33L - €160	15L - €115 20L - €125 25L - €130 30L - €140 40L - €190 50L - €200
SUSTAINABLE?	bluesign product, 100% recycled fabrics/webbing/framesheet, 80% recycled mesh, 50% recycled foam	100% recycled PET materials	Less than 45% recycled materials	50% recycled materials	bluesign product (claimed) with 89% recycled materials
RANGE	Extensive line with men's and women's versions	Extensive line with men's and women's versions	Unisex range, directly based on pre-2020 Talon & Tempest	Extensive line with men's and women's versions	Extensive line with men's and women's versions

Hikelite

NEW
COLOR

Backpackers aren't the only folks who appreciate technical features, ventilation and carrying comfort. For serious or casual day hikes, the Hikelite Series bridges the gap between everyday and outdoor packs to create a polished option stuffed with technical features at an incredible value.

CONSUMER PROFILE:

- Casual to experienced hikers
- Appreciate a simple, lightweight design
- Understand the benefit of a well-ventilated pack



Osprey Sportlite™

NEW
COLOR

With a minimalist, value-focused design, the Osprey Sportlite promises reliable technical performance for active day hikes, near or far. A simple, durable build makes it easy to access the outdoors while essential features provide just what you need, and nothing extra.

CONSUMER PROFILE:

- A wide range of people, from casual to serious, who enjoy the outdoors
- Require a lightweight, technical daypack to support their hikes
- Value budget-friendly, minimalist gear that won't distract from the activity at hand



PHOTO: MARK MCINNIS

Aether™ | Ariel

NEW
COLOR

SELECT VOLUMES & COLORS
AVAILABLE IN EXTENDED FIT

A customizable, perfect-fitting pack that has the ability to carry larger and heavier loads. With an adjustable Custom Fit-on-the-Fly™ Shoulder Strap and Hipbelt, the user can calibrate the perfect fit. A highly proficient suspension and a selection of mid to larger volume styles mean the Aether/Ariel Series offers an impressive carrying ability to support the heaviest of loads. Reliable, durable and thoughtful features for on-trail convenience and a lifetime of adventuring.

CONSUMER PROFILE:

- Backpackers who require carrying heavier loads. Whether it's a cush weekend trip full of creature comforts or an extended excursion to tackle a summit, they are ready for anything Mother Nature throws their way.





AETHER/ARIEL

PRODUCT

COLORWAYS

Aether 55



BLACK



ACORN RED



GARLIC MUSTARD GREEN

Aether 65



BLACK



ACORN RED



GARLIC MUSTARD GREEN

Ariel 55



CERAMIC BLUE



KOSERET GREEN



MEDIUM GRAY

Ariel 65, 65 EF



CERAMIC BLUE



KOSERET GREEN



MEDIUM GRAY





EXOS

NEW: DARK CHARCOAL/ORANGE
C/O: BLUE RIBBON



EJA

NEW: PURPLE DUSK/PURPLE INK
C/O: DEEP TEAL



Photo Accessories NEW

Whether scaling mountains or traversing snowfields, capture the perfect shot with modular photo accessories that pair backcountry camerawork with your favorite, supremely comfortable Osprey pack. Offering a seamless fit into an adventurous lifestyle, new Camera Cubes, Chest Rig and Photo Lid styles keep photo gear protected and readily accessible while navigating challenging terrain outdoors.

CONSUMER PROFILE:

- Adventurous photographers
- Have a desire to carry their camera gear on all their adventures
- Value high-quality gear carry without suffering the performance limitations of photo-specific packs



UNISEX
PHOTOLID™

NEW



PHOTO ACCESSORIES

The PhotoLid is an innovative, padded camera case designed to replace the removable top lid on most any pack, keeping photo gear accessible and protected. Sized to fit a body and two to three lenses. Converts to a lumbar pack to conveniently carry everything on side trips.

CHARCOAL GREY

- + Fully padded top lid replaces removable top lid on Key Osprey pack styles
- + Molded EVA foam conforms to camera body
- + Adjustable molded EVA foam dividers
- + Converts to waist pack configuration

UNISEX
CAMERA CHEST RIG NEW

PHOTO ACCESSORIES

Never miss a shot. The Chest Rig keeps your camera protected, but ready and accessible. The included harness keeps the Rig stable and out of the way during rigorous activity, and flexible carry options allow the case to be directly attached to the pack harness or carried on a hipbelt.

CHARCOAL GREY

- + Included harness
- + Attaches to backpacks with load lifters
- + Molded EVA foam conforms to camera body
- + Side pockets
- + Rain cover

UNISEX
CAMERA CUBE NEW

NEW



PHOTO ACCESSORIES

Turn almost any Osprey pack into a photo bag with these durable, protective Camera Cubes. Available in two sizes with molded EVA tops and adjustable dividers to keep bodies and lenses securely in place. Padded web grab handle provides easy carry while loops for optional shoulder strap add versatility.

CHARCOAL GREY

- + Molded EVA foam conforms to camera body
- + Adjustable molded EVA foam dividers
- + Carrying handle
- + Accessory strap attachments for optional shoulder carry
- + Fits main compartment of key Osprey hike and travel packs



Poco™ Soft Carrier

NEW

Whether it's a big or small adventure, the Poco child carrier nurtures discovery and redefines family adventure. Carrying a child in a supportive, innately safe and comfortable carrier allows you to have a shared point of view while giving you the freedom and mobility to adventure together. This season, our brand new Poco Soft Carrier combines uncompromising features, like breathable comfort and three child growth positions, with a commitment to sustainability—a bluesign® PRODUCT, our soft baby carrier ensures peace of mind.

CONSUMER PROFILE:

- Parents, family or friends who want to adventure with children
- Ability to share adventures, from town to trail to travel
- Prioritize an active, healthy lifestyle for both adult and baby



PHOTO: TERRANCE SIMON

3 CARRYING POSITIONS

3 POSITIONS DE PORTAGE // 3 TRAGEPOSITIONEN



FACE-IN FRONT CARRY

Portage face à l'intérieur //

Trageposition mit Blickrichtung nach vorne

NEWBORN, APPROX. 0-5 MONTHS

Min-Max Weight: 7-10 lb | 3.2-4.5 kg



FACE-OUT FRONT CARRY

Portage face à l'extérieur //

Trageposition mit Blickrichtung nach außen

BABY, APPROX. 5-16 MONTHS

Min-Max Weight: 15-25 lb | 6.8-11 kg



BACK CARRY

Portage sur le dos //

Rückentrageposition

TODDLER, APPROX. 12-36 MONTHS

Min-Max Weight: 20-33 lb | 9-15 kg





OSPREY
POCO SOFT CARRIER



ERGOBABY
OMNIBREEZE & OMNIDREAM



BABYBJORN
HARMONY

SRP	POCO SC: £134.99 / €144.99 POCP SC LT: £119.99 / €124.99	£185 / €200	£209 / €245
COLOURS	4 (2 per style)	28 (14 per style)	7
FABRIC	Mesh & fabric versions	Mesh & fabric versions	Mesh version only
HIPBELT	Full padded hipband	Webbing with pad	Webbing with pad
SAFETY/ECO CREDENTIALS	EN 13209-2:2015, HDI pending TUV APPROVED, bluesign®	EN 13209-2:2015 HDI approved	EN 13209-2:2015, HDI approved
AGE/WEIGHT	Newborn (3.2kg) – 3y (15kg)	Newborn (3.2kg) – 3y (15kg)	Newborn (3.2kg) – 3y (15kg)

S 25 POCO RANGE



NOW LAUNCHING S 25



POCO PREMIUM

POCO

POCO LT

POCO SLT

POCO SOFT CARRIER & LT

POCO CHANGING BAGS



ACE 65
10 TO 17-YEAR-OLD



ACE 50
10 TO 17-YEAR-OLD



ACE 38
8 TO 15-YEAR-OLD



J E T 28
5- TO 13-YEAR-OLD



J E T 18
5- TO 13-YEAR-OLD



J E T 12
4- TO 12-YEAR-OLD



Escapist Velocity NEW

Experience the ultimate ride companion with the all-new Escapist Velocity. Accessible, comfortable and highly adjustable, this bike-specific vest-fit hydration pack is engineered specifically for off-road enthusiasts. Tailored to cater to gravel riders and beyond, it comes in two volumes—ensuring a perfect match with your unique ride style. Embark on your next unpaved adventure knowing you have the perfect hydration solution by your side.

CONSUMER PROFILE:

- Riders who prefer to pedal unpaved surfaces
- Prefer the comfort and convenience of vest-fit hydration
- Appreciate the flexibility to accommodate short and long duration outings



PHOTO: TERRANCE SIMON



ESCAPIST VELOCITY 6

Consumer

Long distance gravel cyclists and cold-weather cyclists who need more gear to stay on the road longer.

Features

- Easy-access reservoir compartment with 1.5L Hydraulics LTR Reservoir
- Separate compartment with internal organization
- Front pocketing
- Lid Lock
- Tool-Roll



ESCAPIST VELOCITY 3

Consumer

Fast and light gravel cyclists, whether they are racing for first place or to beat a PR.

Features

- Easy-access reservoir compartment with 1.5L Hydraulics LTR Reservoir
- Internal organization
- Front panel bungee
- Minimal front pocketing

Metron

NEW

UPDATED

The Metron Series is tailored for urban bike commuters who demand a pack that matches their dedication to the ride. With bike-specific features—such as a separate dirty gear compartment, glove-friendly buckles, bottle pockets and reflectivity—as well as tech storage, internal organization and a design that mirrors their style—the Metron is elevated beyond a mere bike pack.

CONSUMER PROFILE:

- Serious urban commuter
- Grabs a bike to get around whenever possible, rain or shine
- Values a change of clothes when they get where they're going



PHOTO: LIEBERMAN



ARCANE
ROLL TOP WP 25



RADIAL 34



METRON 24



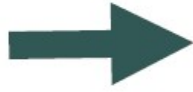
METRON
ROLL TOP 22



METRON MESSENGER
18



ARCANE
ROLL TOP WP 25



METRON WP 25



RADIAL 34



METRON AIRSPEED 34

ASTRONOVA | AXIS

NEW

NEW
COLORS



Packs built for the on-the-go demands of campus life. Thoughtful details simplify organization for daily items like books, electronics and chargers. Designed with the same commitment to quality fit, carefully considered features and durable materials as our technical packs.

CONSUMER PROFILE:

- Students who live an on-the-go lifestyle between campus, cafes and the outdoors
- Requires a versatile, durable pack to meet their everyday needs
- Value style, personality and comfort when choosing a pack



PHOTO: TERRY O'NEILL



ASTRONOVA



AXIS

24/7

NEW
COLORS

Familiar and functional: What more can you ask for in the pack you rely on day in, day out? The 24/7 Series is designed with the same commitment to quality fit, carefully considered features and materials as our technical packs. Each pack is equipped with sensible features, like a padded laptop/tablet sleeve, internal organization and a comfortable harness for all-day carry.

CONSUMER PROFILE:

- Urban explorers, campus commuters and active lifestyles
- Out for the day and need to bring everything with them
- Appreciates technical style aesthetics, colors and textures
- Values sustainability



PHOTO: EVAN RUDERMAN

NEW 24/7 COLOURS



NEW
COLOURS



CASCADE BLUE/
COAL GREY



TUNGSTEN/
SOUNDWAVE GREY



ALPACA TAN/
LATTE BROWN HEATHER

CARRY
OVER



BLACK



ATLAS BLUE



Transporter Lifestyle

NEW

UPDATED

The Transporter Packs are built to get you from point A to B and handle anything that comes your way throughout the day. Featuring tough, weatherproof material shields from external elements while adhering to bluesign® CRITERIA—they're the perfect packs to reflect the modern urban lifestyle.

CONSUMER PROFILE:

- Travelers and everyday users prepared for adverse conditions
- Require highly durable, reliable carry solutions that hold up to adventures big and small
- Appreciate simple, versatile gear that can do it all



PHOTO: TERRANCE SIEMON



ZINCH



ROLL TOP



SLING



WAIST

Daylite™

NEW

NEW
COLOR

The best-selling Daylite Family embodies the value of versatility with a flair for personality, consistently offering fun new colors and exciting seasonal prints. From packs and accessories for daily use to wheeled duffels to carry-on travel packs, our Daylite collection invites individuality while promoting an approachable familiarity.

CONSUMER PROFILE:

- Casual, fun-loving people who like to express themselves with the gear they carry
- Require versatile, simple carry solutions that meet a wide variety of activities
- Value a depth of color options and personality



NEW DAYLITE STYLE & COLOUR



LARGE TOTE
£80 / €95



CROSSBODY POUCH
£35 / €40



CASCADE BLUE /
LATTE BROWN



SOUNDWAVE GREY /
LATTE BROWN



FROSTY MINT



MAGMA BROWN / TUNGSTEN



BLACK/
STARDUST YELLOW/
LEMONGRASS



EUPHORIA RAINBOW/
TUNGSTEN/
BLUE SPIKEMOSS



HOTSPOT PINK/
FROSTY MINT/
LEMONGRASS



Daylite™ Earth

SPECIAL
EDITION

Embodying simplicity and versatility, Daylite Earth is our most sustainably designed lifestyle pack to date*. Made from recycled fabric sourced primarily from ocean-bound plastic waste, Daylite shows us how we can apply thoughtful sustainability design to everyday decisions. The delightful crossover of technical, lifestyle and travel means the Daylite Series can be used every day, everywhere: on a day hike, as a travel bag, at the market or on the go.

*See the next page for details.

CONSUMER PROFILE:

- Casual, fun-loving people who like to express themselves with the gear they carry
- Require versatile, simple carry solutions that meet a wide variety of activities
- Value environmental stewardship and products with a strong story/elevated sustainability

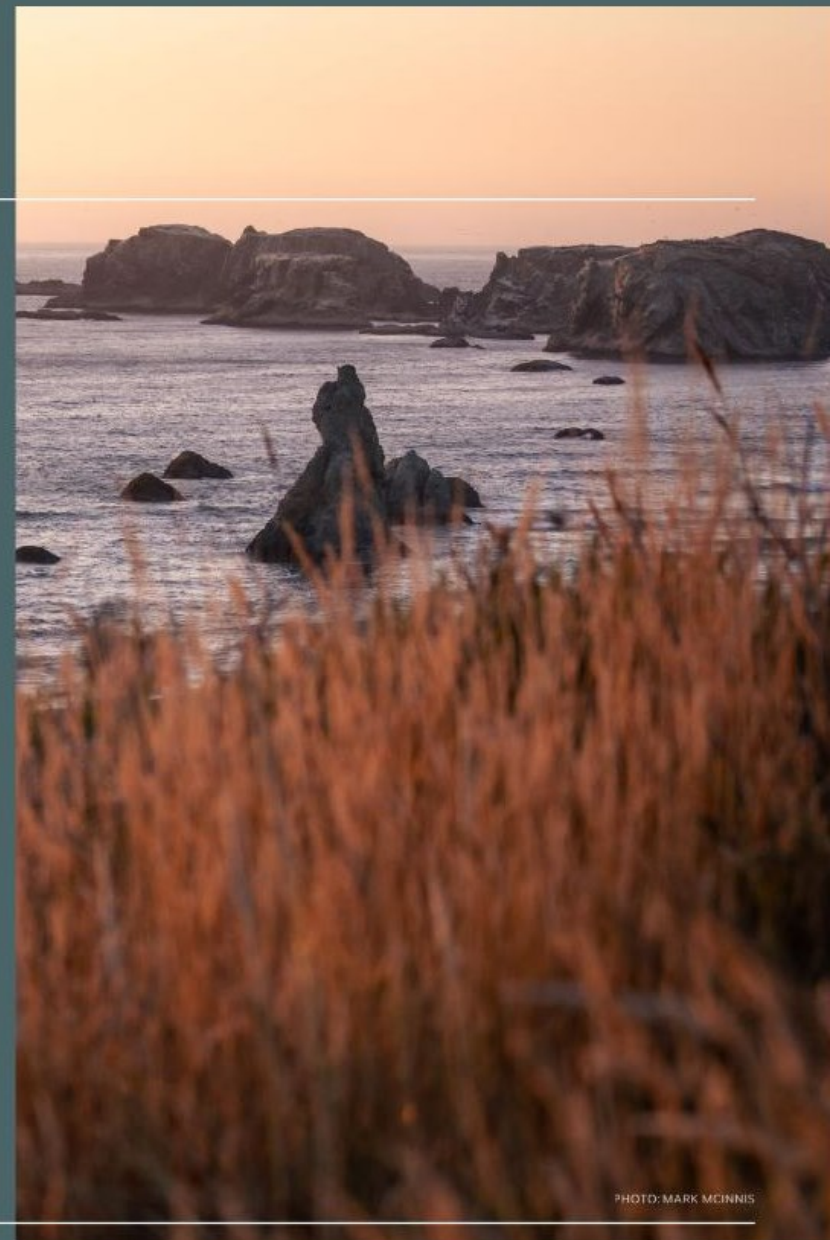


PHOTO: MARK MCINNIS



DAYLITE
EARTH

PHOTO: JOHN CAMERON

①

bluesign® APPROVED, 100% recycled polyester main body and bottom fabric sourced primarily from ocean plastic cleanup

②

100% recycled webbing, edge binding tape and sewing thread

③

50% of plastic hardware is comprised of bio-based POM plastic, made from captured agricultural methane

④

All DWR treatments made without PFAS



Osprey Arcane™

NEW

UPDATED

A stylish everyday solution that stands as an extension of self expression. With unique functionality and foundational aesthetics, the Osprey Arcane Series is recognized for a quality build and an intuitive feature set. These bags are made to withstand daily use—and made to go wherever you go.

CONSUMER PROFILE:

- Active urban dweller
- Minimalist, classic style
- Out for the day and need to bring everything with them



NEW ARCAINE HIP BAG



Easy to access magnetic closure great for one handed use



Hidden back zip for security



Large main compartment with internal zip pocket and key clip

NEW ARCANÉ COLOUR



BLACK



SOUNDWAVE GREY



BOTANICA HEATHER



CASCADE BLUE



LATTE BROWN HEATHER



THANK YOU